

Product datasheet for **RC226048**

GSPT1 (NM_001130006) Human Tagged ORF Clone

Product data:

Product Type:	Expression Plasmids
Product Name:	GSPT1 (NM_001130006) Human Tagged ORF Clone
Tag:	Myc-DDK
Symbol:	GSPT1
Synonyms:	551G9.2; eRF3a; ETF3A; GST1
Mammalian Cell Selection:	Neomycin
Vector:	pCMV6-Entry (PS100001)
E. coli Selection:	Kanamycin (25 ug/mL)



[View online »](#)

**ORF Nucleotide
Sequence:**

>RC226048 representing NM_001130006
 Red=Cloning site Blue=ORF Green=Tags(s)

TTTTGTAATACGACTCACTATAGGGCGGCCGGGAATTCGTCGACTGGATCCGGTACCGAGGAGATCTGCC
 GCC**CGGATCGCC**

ATGGATCCGGGCAGTGGCGGCGGCGGCGGCGGCGGCGGCGGCGGCGGAGCAGCAGCGGCAGCAGCAGCA
 GCGACTCGGCGCCTGACTGCTGGGACCAGGCGGACATGGAAGCCCCGGCCGGGCCCTTGGCGGCGCGG
 CGGCTCCCTGGCGGCGGCGGCGGAGGCCACGCGGAGAACCTCAGCGCGGCCCTCAGCGGCAACTCAAC
 GTCAACGCCAAGCCCTTCGTGCCAACGTCCACGCCCGGAGTTCGTGCCGTCTTCTGCGGGGCCGG
 CAGCGCCGCCACCCAGCTGGCGGCGCCCAATAACCACGGAGCCGGCAGCGCGGGAGGCGCGTGC
 GGCACCTGTGGAATCCTCTCAAGAGAACAGTCATTGTGTGAAGTTCAAATTCAGCTGTAGCATGGAA
 CTTTCAGAACCTATTGAAAATGGAGAGACAGAAATGTCTCCAGAAGAATCATGGGAGCACAAGAAGAAA
 TAAGTGAAGCAGAGCCAGGGGTGGTTCCTTGGGAGATGGAAGGCCGCCAGAGGAAAGTGCCCATGAAAT
 GATGGAGGAGGAAGAGGAAATCCAAAACCTAAGTCTGTGGTTGCACCGCCAGGTGCTCCTAAGAAAGAG
 CATGTAATGTAGTATTCAATGGGCACGTAGATGCTGGCAAGTCAACCATTGGAGGACAAAATAATGTATT
 TGAATGGAATGGTTGACAAAAGGACGCTTGAAAAGTATGAAAGAGAAGCTAAAGGAAAAACAGAGAAA
 TTGGTACTTGTCTGGGCCTTAGACACAATCAGGAAGAACGAGACAAGGGTAAAACAGTAGAAGTGGGT
 CGTGCCTATTTTGAACCGAAAAGAAGCATTTCACAATTCTAGATGCCCTGGCCACAAGAGTTTGTCC
 CAAATATGATTGGTGGTCCCTCAAGCTGATTTGGCTGTGCTGGTAATCTCAGCCAGGAAAAGGAGATT
 TGAAACTGGATTTGAAAAGGAGGACAGACAAGAGAACATGCAATGTTGGCAAAGACAGCAGGTGTAAAA
 CACCTAATTGTGCTAATTAATAAGATGGATGATCCAACAGTAAATTGGAGCAATGAGAGATATGAAGAAT
 GTAAGGAGAACTAGTGCCATTTTGAAGAAAGTTGGCTTCAATCCAAAAGGACATTCACTTTATGCC
 CTGCTCAGGACTTACTGGAGCAAATCTCAAAGAGCAGTCGGATTTCTGTCTTGGTACATTGGATTACCG
 TTTATTCCATATCTGGATAATTTGCCGAACCTCAATAGATCAGTTGATGGACCAATCAGGCTGCCAATTG
 TGGATAAGTACAAGGATATGGGCACTGTGGTCTGGGAAAGCTGGAATCAGGATCTATTTGTAAAGGCCA
 GCAGCTTGTGATGATGCCAAACAAGCACACGTGGAAGTCTTGGAACTTTCCGATGATGTAGAGACT
 GATACCGTAGCCCGAGGTGAAAACCTCAAATCAGACTGAAAGGAATTGAAGAAGAGGAGATTCTCCAG
 GGTATACTTTGTGATCCTAATAATCTTTGTCATTCTGGACGCACATTTGATGCCAGATAGTGATTAT
 AGAGCACAAATCCATCATCTGCCAGGCTATAATGCGGTGCTGCATATTCATACCTGTATTGAGGAGGTG
 GAAATAACAGCCTTAATCTGCTTGGTAGACAAAAAATCAGGAGAAAAAGTAAGACCCGACCCCGTTTTG
 TCAAACAAGATCAAGTATGCATTGCTCGCTTAAGGACAGCAGGAACCATCTGCCTTGAGACCTTTAAGA
 CTTCCCTCAGATGGTCTTTACCTTAAGAGATGAGGGTAAGACCATTGCAATTGGAAGTTCTGAAA
 CTGGTTCCAGAGAAAGAC

ACGCGTACGCGGCCGCTCGAGCAGAACTCATCTCAGAAGAGGATCTGGCAGCAAATGATATCCTGGATT
 ACAAGGATGACGACGATAAGGTTTAA

Protein Sequence: >RC226048 representing NM_001130006
Red=Cloning site Green=Tags(s)

```
MDPGSGGGGGGGGGSSSSSSSDSAPDCWDQADMEAPGPGPCGGGSLAAAAEAQRENLSAAFSRQLN
VNAKPFVFNVAEEFVPSFLRGPAAAPPPAGGAANNHGAGSGAGGRAAPVESSQEEQSLCEGSNSAVSME
LSEPIENGETEMSPEESEWEHKEEISEAEPGGGSLDGRPPPEESAHEMEEEEEEIPKPKSVVAPPGAPKKE
HVNVPVFIGHVDAGKSTIGGQIMYLTGMVDKRTLEKYEREAKEKNRETWYLSWALDTNQEERDKGKTVEVG
RAYFETEKKHFTILDAPGHKSFVPMIGGASQADLAVLVI SARKGEFETGFEEKGQTRHAMLAKTAGVK
HLIVL INKMDPTVNSNERYEECKEKLVPFLKKG VGNPKKDIHFMPCSGLTGANLKEQSDFCPWYIGLP
FIPYLDNLPNFNRSVDGPIRLPIVDKYKDMGTVVLGKLESGSICKGQQLVMPNKHNEVLGILSDDVET
DTVAPGENLKIRLKGIEEEEILPGFILCDPNNLCHSGRTFDAQIVIIIEHKSIIICPGYNAVLHIHTCIEEV
EITALICLVDKKSGEKSKTRPRFVKQDQVCIALRLRTAGTICLETFKDFPQMGRFTLRDEGKTI AIGKVLK
LVPEKD
```

TRTRPLEQKLISEEDLANDILDYKDDDDKV

Chromatograms: https://cdn.origene.com/chromatograms/mk8070_g07.zip

Restriction Sites: SgfI-MluI

Cloning Scheme:



ACCN: NM_001130006

ORF Size: 1908 bp

OTI Disclaimer: The molecular sequence of this clone aligns with the gene accession number as a point of reference only. However, individual transcript sequences of the same gene can differ through naturally occurring variations (e.g. polymorphisms), each with its own valid existence. This clone is substantially in agreement with the reference, but a complete review of all prevailing variants is recommended prior to use. [More info](#)

OTI Annotation: This clone was engineered to express the complete ORF with an expression tag. Expression varies depending on the nature of the gene.

Components: The ORF clone is ion-exchange column purified and shipped in a 2D barcoded Matrix tube containing 10ug of transfection-ready, dried plasmid DNA (reconstitute with 100 ul of water).

Reconstitution Method:

1. Centrifuge at 5,000xg for 5min.
2. Carefully open the tube and add 100ul of sterile water to dissolve the DNA.
3. Close the tube and incubate for 10 minutes at room temperature.
4. Briefly vortex the tube and then do a quick spin (less than 5000xg) to concentrate the liquid at the bottom.
5. Store the suspended plasmid at -20°C. The DNA is stable for at least one year from date of shipping when stored at -20°C.

RefSeq: [NM_001130006.1](#), [NP_001123478.1](#)

RefSeq ORF: 1911 bp

Locus ID: 2935

UniProt ID: [P15170](#)

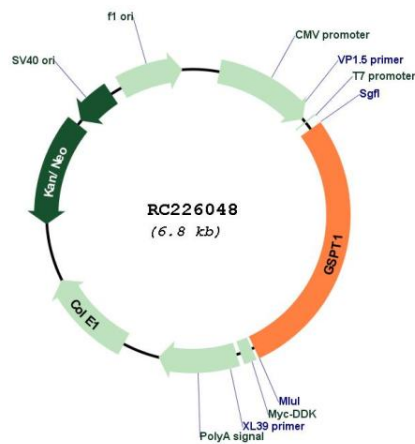
Cytogenetics: 16p13.13

Protein Families: Transmembrane

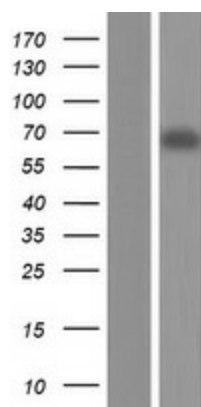
MW: 68.4 kDa

Gene Summary: Involved in translation termination in response to the termination codons UAA, UAG and UGA (By similarity). Stimulates the activity of ETF1 (By similarity). Involved in regulation of mammalian cell growth (PubMed:2511002). Component of the transient SURF complex which recruits UPF1 to stalled ribosomes in the context of nonsense-mediated decay (NMD) of mRNAs containing premature stop codons (PubMed:24486019).[UniProtKB/Swiss-Prot Function]

Product images:



Circular map for RC226048



Western blot validation of overexpression lysate (Cat# [LY427097]) using anti-DDK antibody (Cat# [TA50011-100]). Left: Cell lysates from untransfected HEK293T cells; Right: Cell lysates from HEK293T cells transfected with RC226048 using transfection reagent MegaTran 2.0 (Cat# [TT210002]).