

Product datasheet for **RC226026**

SLC6A12 (NM_001122848) Human Tagged ORF Clone

Product data:

Product Type:	Expression Plasmids
Product Name:	SLC6A12 (NM_001122848) Human Tagged ORF Clone
Tag:	Myc-DDK
Symbol:	SLC6A12
Synonyms:	BGT-1; BGT1; GAT2
Mammalian Cell Selection:	Neomycin
Vector:	pCMV6-Entry (PS100001)
E. coli Selection:	Kanamycin (25 ug/mL)



[View online »](#)

ORF Nucleotide Sequence:

>RC226026 ORF sequence
 Red=Cloning site Blue=ORF Green=Tags(s)

TTTTGTAATACGACTCACTATAGGGCGGCCGGAATTCGTCGACTGGATCCGGTACCGAGGAGATCTGCC
 GCC**CGGATCGCC**

ATGGACGGGAAGGTGGCAGTGAAGAGCGTGGCCTCCTGCGGTCTCCTGGTCCCCGAGGAGGAGAGA
 AGTTGGACCAGGAAGACGAGGACCAGGTGAAGGATCGGGGCAATGGACCAACAAGATGGAGTTTGTGCT
 GTCAGTGGCCGGGAGATCATTGGGCTGGCAATGTCTGGAGTTTCCCTATCTCTGCTACAAAAACGGA
 GGTGGAGCCTTCTCATCCCCTACTTTCATCTTCTTCTTTGTCTGCGGCATCCCGGTGTTCTTCTGGAGG
 TGGCGTTGGCCAATACACCAGCAAGGGAGTGTACAGCCTGGAGGAAGATCTGCCCCCTCTCCAGGG
 CATTGGTCTGGCATCTGTGGTATCGAGTCATATTTGAATGTCTACTACATCATCATCTTGCCTGGGCT
 CTCTTCTACCTGTTTCAGCTCCTTCACTTCTGAGCTGCCCTGGACGACCTGCAACAACCTTTTGAACACAG
 AGCATTGCACGGACTTTCTGAACCACTCAGGAGCCGGCACAGTGACCCCATTTGAGAATTTACCTCACC
 TGTCTATGGAATCTGGGAGAGACGAGTTCTGGGCATCACCTCGGGCATCCATGACCTGGGCTCCCTGCGC
 TGGGAGCTGGCCCTGTGCCTCCTGCTCGCTGGGTCTATCTGCTATTTCTGCATCTGGAAGGGGTCAAGT
 CCACAGGCAAGGTGGTTTATTTACAGCCACGTTTCCGTACCTGATGCTTGTCAATTTGCTGATCAGAGG
 TGTCAACCTTCCCGGAGCCTACCAGGGCATCATCTACTACTTGAAGCCAGATTTGTTCCGCCTCAAGGAC
 CCTCAGGTGTGGATGGATGCGGGCACCCAGATCTTCTTCTCCTTTGCCATCTGCCAGGGGTGCCTGACAG
 CCCTGGGCAGCTACAACAAGTATACAACAACCTGCTACAAGGACTGCATCGCCCTCTGCTTCTGAAACAG
 TGCCACCAGCTTTGTGGCTGGGTTTGTGTCTTCTCCATCCTGGGCTTATGTCCAAGAGCAAGGGGTG
 CCCATTTCTGAAGTGGCCGAGTCAGGTCCTGGGCTGGCCTTATCGCCTTCCCAAGGCTGTGACTATGA
 TGCCCTTATCCCAGCTGTGGTCTGCCTGTTCTTTATCATGCTCATATTTCTAGGGCTGGACAGCCAGTT
 TGTCTGTGTGGAGTGCCTGGTGACAGCCTCCATAGACATGTTCCCGAGGAGCTCCGGAAGAGCGGGCGG
 CGCGAGCTCCTCATCCTCACCATCGCCGTATGTGCTACCTGATAGGGCTTTTCTGGTACCGAGGGCG
 GGATGTACATCTTCCAGCTGTTTACTACTATGCTTCCAGTGGCATATGCCTGCTGTTTCTGTCATTGTT
 TGAAGTGGTCTGCATAAGCTGGGTGATGGGGCGGACCGTTTCTATGACAACATTGAGGACATGATTGGC
 TACCGGCCATGGCCCTGGTGAAGATCTCCTGGCTTCTCCTGACCCCTGGACTTTGCCTGGCCACTTTCC
 TCTTCTCCTTGAGCAAGTACACCCCTCAAGTACAACAACGCTATGTGTACCCGCCCTGGGGATACTC
 CATTGGCTGGTCTGCTCCTCCATGGTCTGTGTCCACTTTCGTGTCATCACCTCCTGAAG
 ACTCGGGTCTTTCAGGAAGCGTCTGCGTCAGCTCATACCCCTGACTCCAGTCTGCCACAGCCCAAGC
 AACATCCCTGCTTGGATGGCAGTCTGGCCGGAACCTTTGGGCCCTCCCAACAAGGGAAGGACTGATAGC
 CGGGGAGAAGGAGACCCATTTG

ACGCGTACGCGGCCGCTCGAGCAGAACTCATCTCAGAAGAGGATCTGGCAGCAATGATATCCTGGATT
 ACAAGGATGACGACGATAAGGTTTAA

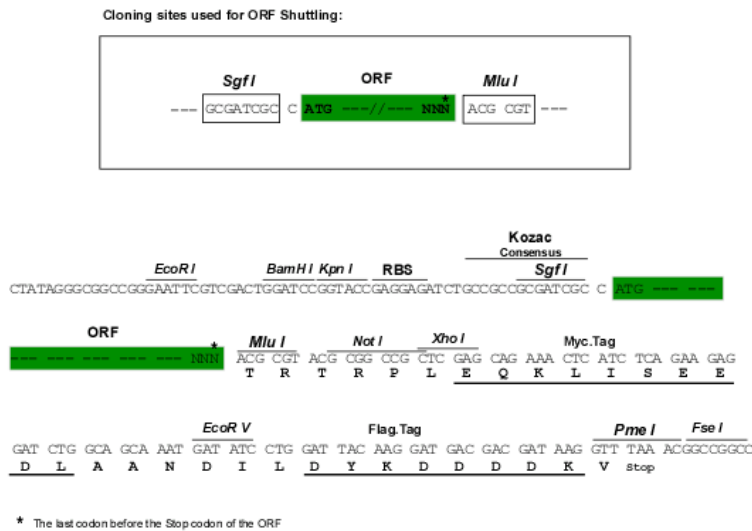
Protein Sequence:

>RC226026 protein sequence
 Red=Cloning site Green=Tags(s)

MDGKVAVQERGPAPVSWVPEEGEKLDQEDEDQVKDRGQWTNKMEFVLSVAGEIIGLGNVWRFYPYLCYKNG
 GGAFPIPYFIFFFVCGIPVFFLEVALGQYTSQGSVTAWRKICPLFQIGLASVVIIESYLNYYYIIILAWA
 LFYLFSSFTSELPTTCCNNFWNTEHCTDFLNHSGAGTVPFENFTSPVMEFWERRVLGITSGIHDLSLR
 WELALCLLLAWVICYFCIWKGVKSTGKVVYFTATFPYLMVLVILLIRGVTLPAYQGIYYLKPDLFRLKD
 PQVWMDAGTQIFFSFAICQGCLTALGSYNKYHNNCYKDCIALCFLNSATSFVAGFVVFVILGFMSQEQGV
 PISEVAESGPGLAFIAFPKAVTMMPLSQLWSCLFFIMLIFLGLDSQFVCECLVTASIDMFPRQLRKSGR
 RELLILTIIVMICYLIGLFLVTEGGMYIFQLFDYYASSGICLLFLSLFEVVCISWVYGADRFYDNIEMIG
 YRPWPLVKISWLFLTPGLCLATFLFSLSKYTPLKYNVYVYPPWYSIGWFLALSSMVCVPLFVVITLLK
 TRGPFKRRLRQLITPDSLPQPKQHPCLDGSAGRNFGPSPTREGLIAGEKETHL

TRTRPLEQKLISEEDLAANDILDYKDDDDKV

Chromatograms: https://cdn.origene.com/chromatograms/mk6275_b10.zip
 Restriction Sites: SgfI-MluI
 Cloning Scheme:



ACCN: NM_001122848

ORF Size: 1842 bp

OTI Disclaimer: The molecular sequence of this clone aligns with the gene accession number as a point of reference only. However, individual transcript sequences of the same gene can differ through naturally occurring variations (e.g. polymorphisms), each with its own valid existence. This clone is substantially in agreement with the reference, but a complete review of all prevailing variants is recommended prior to use. [More info](#)

OTI Annotation: This clone was engineered to express the complete ORF with an expression tag. Expression varies depending on the nature of the gene.

Components: The ORF clone is ion-exchange column purified and shipped in a 2D barcoded Matrix tube containing 10ug of transfection-ready, dried plasmid DNA (reconstitute with 100 ul of water).

Reconstitution Method:

1. Centrifuge at 5,000xg for 5min.
2. Carefully open the tube and add 100ul of sterile water to dissolve the DNA.
3. Close the tube and incubate for 10 minutes at room temperature.
4. Briefly vortex the tube and then do a quick spin (less than 5000xg) to concentrate the liquid at the bottom.
5. Store the suspended plasmid at -20°C. The DNA is stable for at least one year from date of shipping when stored at -20°C.

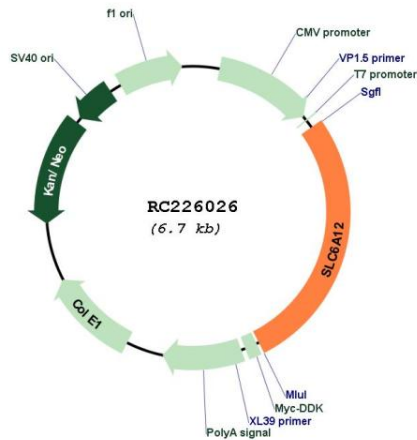
RefSeq: [NM_001122848.3](#)

RefSeq Size: 3270 bp

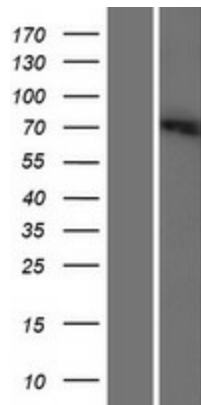
RefSeq ORF: 1845 bp

Locus ID: 6539
UniProt ID: [P48065](#)
Cytogenetics: 12p13.33
Protein Families: Druggable Genome, Transmembrane
MW: 69.4 kDa
Gene Summary: Transports betaine and GABA. May have a role in regulation of GABAergic transmission in the brain through the reuptake of GABA into presynaptic terminals, as well as in osmotic regulation.[UniProtKB/Swiss-Prot Function]

Product images:



Circular map for RC226026



Western blot validation of overexpression lysate (Cat# [LY426579]) using anti-DDK antibody (Cat# [TA50011-100]). Left: Cell lysates from untransfected HEK293T cells; Right: Cell lysates from HEK293T cells transfected with RC226026 using transfection reagent MegaTran 2.0 (Cat# [TT210002]).