

Product datasheet for **RC226023**

ZNF276 (NM_001113525) Human Tagged ORF Clone

Product data:

Product Type:	Expression Plasmids
Product Name:	ZNF276 (NM_001113525) Human Tagged ORF Clone
Tag:	Myc-DDK
Symbol:	ZNF276
Synonyms:	CENP-Z; CENPZ; ZADT; ZFP276; ZNF477
Mammalian Cell Selection:	Neomycin
Vector:	pCMV6-Entry (PS100001)
E. coli Selection:	Kanamycin (25 ug/mL)



[View online »](#)

ORF Nucleotide Sequence:

>RC226023 representing NM_001113525
 Red=Cloning site Blue=ORF Green=Tags(s)

TTTTGTAATACGACTCACTATAGGGCGGCCGGGAATTCGTCGACTGGATCCGGTACCGAGGAGATCTGCC
 GCC**CGGATCGCC**

ATGAAGCGGGACCGGCTGGGCCGCTTCTGTCTCCTGGTTCGTCGCCGACAGTGGGGCCCTCGGACGGCG
 GCGGCGGCGTCAGCCGGACTCGGGCCGCCCTTCCCTTAGCGGTGGGCCGAGGGTGGACGGGCGACGGC
 GCGGCGCGCTGGGGCCCGTGGGGTCTCGGGGACGCGGGCGAGGACGGCGCGGACGAGGACAGGAGCA
 GGCCGGGCTCTGCCATGGGTCAGTGTGCGCTTCTGCCACGGGAAGTTTTCTCGAGAAGCCTGCGCAGCA
 TCTCCGAGAGGGCGCTGGAGCGAGCATGGAGAGGCCATCCGACAGGAGCGCGTCTCGTACGGGACTT
 CCAGCGCTGCTTGGTGTGGTGTCCGCCAGGACCCACCTTGTCTCCGTTTGTCTGCAAGAGCTGCCAC
 GCCCAGTTCTACCAGTGCACAGCCTTCTCAAGTCTTCTGCAGAGGGTCAACGCCTCCCCGGCTGGT
 GCCGAAGCCTTGTCAAAGGTGGTGGCCAGCCCCAACAGGGGCGAGGAGGGAGCGTGTCTGGTGA
 TCTGATCACATCCAGCCCCAGTGCCTGCACGGCTTGGTGGGGTGGTGCATGGACATGCGGCCAGCTGC
 GGGGCCCTGCCACCTTCAAGAGACACTGTCTCCGAGTACTGCGGCGTATCCAGGTCGTGTGGGGCT
 GCGACCAGGGCCACGACTACACCATGGATACCAGCTCCAGCTGCAAGGCCTTCTTGTGGACAGTGGCT
 GGCAGTCAAGTGGCCATGGGACAAAGAGACGGCCACGGCTGCCCCAGCACCGAGGGTGGAAACCTGGG
 GATGCCCTCAGACCTCCAGGGTAGAGGGACAGGGACCCAGTTGGGGCTGAGACCAAGACCCTGCCCA
 GCACGGATGTGGCCAGCCTCCTTCGGACAGCGACGCGGTGGGGCCAGGTCGGGCTTCCACCTCAGCC
 AAGCCTGCCCTTTGCAGGGCCCCAGGGCAGTTGGGTGAGAAGCAGCTTCCATCTTCAACCTCGGATGAT
 CGGGTAAAAGACGAGTTCAAGTACCTTCTGAGGGAGAGCTTGTGAGTGAAGATGAAAATGACAAGAAGC
 AAAATGCCAGTCTTCGGACGAGTCTTTCGAGCCTTACCAGAAAGGAAAGTCTCTGGTAAAGAAGTGA
 AAGCAAAGAAGCCAAGAAGTCTGAAGAACAAGAATTTCGGAAGAAGCCGGGACCAAGCCCGGATGGAA
 AAGAAGCTTCGTTGTGAGAGGGAGGAGTTCACCATCTACAAGTGTCTTACCAGGGCTGCACGGCCG
 TGTACCAGGGCGCTGACGGCATGAAGAAGCACATCAAGGAGCACCAGGAGGTCGGGAGCGGCCCTG
 CCCCCACCCTGGCTGCAACAAGTTTTCATGATCGACCGTACCTGCAGCGCCACGTGAAGCTCATCCAC
 ACAGAGGTGCGGAACTATCTGTGACGAATGTGGACAACTTCAAGCAGCGGAAGCACCTTCTCGTCC
 ACCAAATGCGACATTCGGGAGCCAAGCCTTTCAGTGTGAGGTCTGTGGTTCCAGTGCAGGCGAGGGC
 ATCCCTCAAGTACCACATGACCAACACAAGGCTGAGACTGAGCTGGACTTTCCTGTGACCAAGTGTGGC
 CGGCGTTTGAAGAAGGCCACAACCTCAATGTACACATGTCCATGGTGCACCCGCTGACACAGACCAGG
 ACAAGGCCTGCCCTGGAGCGGAACCACCACCTGGGCCACCGAGCCCTCTGTGACCACAGAGGGCCA
 GCGGTTGAAGCCGAACCCACC

ACGCGTACGCGGCCGCTCGAGCAGAACTCATCTCAGAAGAGGATCTGGCAGCAAATGATATCCTGGATT
 ACAAGGATGACGACGATAAGGTTTAA

Protein Sequence:

>RC226023 representing NM_001113525
 Red=Cloning site Green=Tags(s)

MKRDRLGRFLSPGSSRQCGASDGGGVSRTGRPSL SGGPRVDGATARRAWPGVSGDAGEDGADEAGA
 GRALAMGHCRLLCHGKFSRSLRSISERAPGASMERPSAEERVLVRDFQRLLGVAVRQDPTLSPFVCKSCH
 AQFYQCHSLLKSFQRVNASPAGRRKPKAKVGAQPPTGAEEGACLVDLITSSPQCLHGLVGWVHGHAAASC
 GALPHLQRTLSSSEYCGVIQVWVWCDQGHDTMDTSSSCKAFLLDALAVKWPWDKETAPRLPQHRGWNPG
 DAPQTSQGRGTGTPVGAETKTL PSTDVAQPPSDSDAVGPRSGFPQPPLPCRAPGQLGEKQLPSSTSD
 RVKDEFSDLSEGDVLSSEDDKQNAQSSDESFEYPYPERKVSQKSESKAKKSEEPRIKPKPGPKPGWK
 KKLRCEREELPTIYKCPYQGCTAVYRGADGMKKHIKEHHEEVREPRCPHPGCKNVFMIIDRYLQRHVKLIH
 TEVRNYICDECGQTFKQRKHLVHQMHRHSGAKPLQCEVCGFQCRQRASLKYHMTKHAETELDFACDQCG
 RRFKAHNLNVHMSMVHPLTQTQDKALPLEAEPGPPSPSVTTEGQAVKPEPT

TRTRPLEQKLISEEDLAANDILDYKDDDDKV

Chromatograms: https://cdn.origene.com/chromatograms/mk8069_g09.zip

Restriction Sites: SgfI-MluI

Cloning Scheme:



ACCN: NM_001113525

ORF Size: 1842 bp

OTI Disclaimer: The molecular sequence of this clone aligns with the gene accession number as a point of reference only. However, individual transcript sequences of the same gene can differ through naturally occurring variations (e.g. polymorphisms), each with its own valid existence. This clone is substantially in agreement with the reference, but a complete review of all prevailing variants is recommended prior to use. [More info](#)

OTI Annotation: This clone was engineered to express the complete ORF with an expression tag. Expression varies depending on the nature of the gene.

Components: The ORF clone is ion-exchange column purified and shipped in a 2D barcoded Matrix tube containing 10ug of transfection-ready, dried plasmid DNA (reconstitute with 100 ul of water).

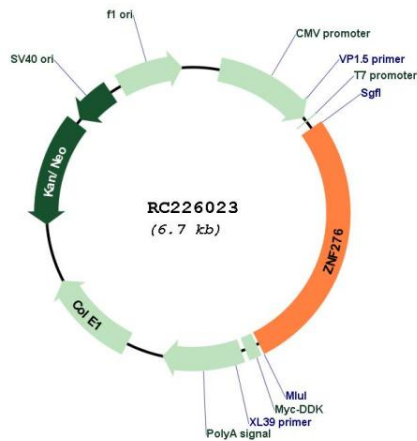
- Reconstitution Method:**
1. Centrifuge at 5,000xg for 5min.
 2. Carefully open the tube and add 100ul of sterile water to dissolve the DNA.
 3. Close the tube and incubate for 10 minutes at room temperature.
 4. Briefly vortex the tube and then do a quick spin (less than 5000xg) to concentrate the liquid at the bottom.
 5. Store the suspended plasmid at -20°C. The DNA is stable for at least one year from date of shipping when stored at -20°C.

RefSeq: [NM_001113525.2](#)

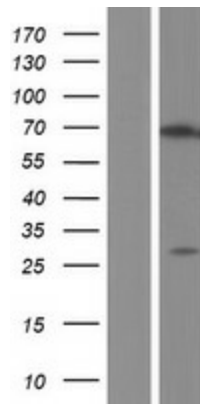
RefSeq ORF: 1845 bp

Locus ID: 92822

UniProt ID: [Q8N554](#)
Cytogenetics: 16q24.3
Protein Families: Transcription Factors
MW: 67 kDa
Gene Summary: May be involved in transcriptional regulation.[UniProtKB/Swiss-Prot Function]

Product images:


Circular map for RC226023



Western blot validation of overexpression lysate (Cat# [LY426428]) using anti-DDK antibody (Cat# [TA50011-100]). Left: Cell lysates from untransfected HEK293T cells; Right: Cell lysates from HEK293T cells transfected with RC226023 using transfection reagent MegaTran 2.0 (Cat# [TT210002]).