

## Product datasheet for **RC226019**

### **ABLIM2 (NM\_001130084) Human Tagged ORF Clone**

#### **Product data:**

Product Type:	Expression Plasmids
Product Name:	ABLIM2 (NM_001130084) Human Tagged ORF Clone
Tag:	Myc-DDK
Symbol:	ABLIM2
Mammalian Cell Selection:	Neomycin
Vector:	pCMV6-Entry (PS100001)
E. coli Selection:	Kanamycin (25 ug/mL)



[View online »](#)

**ORF Nucleotide Sequence:**

>RC226019 representing NM\_001130084  
 Red=Cloning site Blue=ORF Green=Tags(s)

TTTTGTAATACGACTCACTATAGGGCGGCCGGAATTCGTCGACTGGATCCGGTACCGAGGAGATCTGCC  
 GCC**GCGATCGCC**

ATGAGTGCAGTGTGCGAGCCCCAGGCTGCTCCAGCCCGTGGAGAAGTCGCCAGCACGGCGATCCTGT  
 GCAACACGTGTGGGAATGTGTGCAAGGGCGAGGTGCTGCGGGTGCAGGACAAGTACTTCCACATCAAGTG  
 CTTCTGTGTAAGCATGTGGCTGCGACCTGGCCGAGGGCGGCTTCTTCGTGCGGCAGGGCGAGTACATC  
 TGCACGCTGGACTACCAGAGGCTCTACGGCACCCGCTGCTTCAGCTGCGACCAGTTCATTGAGGGTGAGG  
 TGGTGTGCGGCGTGGCAAGACCTACCACCCGACTGCTTCGTGTGTGCCGTCTGCCGGCTGCCCTTCCC  
 CCCCAGGGACCGAGTGACCTTCAACGGGAAGGAATGCATGTGCCAGAAGTGTCCCTGCCGTATCGGTG  
 GGCAGCAGCGCACCTGTCCAGGGCCTCCGAAGTTGTGGGGGTGCGGCACAGAAATCAAGAATGGCC  
 AGGCCCTGGTAGCCTTGGACAAGCACTGGCACTGGGCTGTTTTAAGTCAAGAGCTGTGGGAAGCTCCT  
 GAATGCCGAGTACATCAGCAAGGATGGGCTGCCCTACTGCGAAGCTGACTATCACGCCAAGTTCGGCATC  
 CGCTGTGACAGCTGTGAGAAATACATCACGGGGCGGTGCTGGAGGCCGAGAGAAGCACTACCACCTT  
 CCTGCGCGCTATGTGTCAGGTGCGGCCAGATGTTTGCAGAAGGCCAAGAGATGTATCTTCAAGTTCCCTC  
 CATCTGGCATCCGGCGTGTGACAAGCAGCCAGAAGTGAAGACAGAAACAAGGAAACCAGAACTTCTCTCA  
 GAGAGCATCATTCTGTCCCTGCTTCCAGCACCTCAGGGTCTCCGAGCCGTGTGATTTATGCCAAGCTTG  
 GTGGTGTGATCCTGGACTACAGGGACTTGGCAGCCCTTCTAAAAGTAAAGCCATCTATGACATCGACCC  
 CCCCAGCATGATCTCTACTCACCTACATCAGCCACTCTGCAGGGGACAGGCAGAGCTACGGCGAGGGG  
 GATCAGGATGACCGTCTCAAGCAGTGTGCGACCTCCAGCCCAAGCTCCACTGGTTCGGTTAGCCTCG  
 GCGCTACACTCCGACCTCACGGTCCACACAGCACTACAGCCGTCAGGCAGTGAAGTGGCCGGAGCAC  
 CCCCAGCCTCTCCGTGCTCTGACAGCAAGCCGCCCTCCACCTACCAGCAGGCACCTCGCCACTTC  
 CACGTCCCAGACACTGGCGTAAAAGATAACATCTATAGGAAACCCCTATCTACAGACAGCATGCTGCCA  
 GGCGATCGGATGGGGAGGATGGAAGCTTGGACCAGGATAACAGGAAGAAGAGCAGCTGGCTGATGCTCAA  
 GGGGGATGCAGACACAAGGACCAATTCTCCAGACCTGGACACCCAGTCTTGTCCACAGCAGCGGGACC  
 GACAGAGACCCTTCAAAGGATGGCAGGGGACAGCTTCACTCACGATTCCTTATCCAAATCTGACC  
 CTCTCCCAGGACATGGAAGAATGGCTTGGACCAGCGAATGCCAATCTGGCCCCCTGTGGAGCAGACCC  
 GGATGCCAGCTGGGGCATGCGAGAATAACAAGTCTATCCGATGACTCCCTCATCGTCAAAACCGAATT  
 CGCGTGAAACTGCCAAAGACGTGGACCGGACGAGACTGGAGAGCACTTGTGCGCCGAGGAGTTCAGG  
 AAGTGTGTTGGGATGAGCATCGAGGAGTTTGACCGCTGGCCCTCTGGAAGAGGAATGACCTTAAGAAGAA  
 AGCCCTTTTGTTTC

**ACGCGT**ACGCGGCCGCTCGAGCAGAACTCATCTCAGAAGAGGATCTGGCAGCAAATGATATCCTGGATT  
 ACAAGGATGACGACGATAAGGTTTAA

**Protein Sequence:**

>RC226019 representing NM\_001130084  
 Red=Cloning site Green=Tags(s)

MSAVSQQAAPSPLEKSPSTAILCNTCGNVCKGEVLRVQDKYFHIKCFVCKACGCDLAEGGFFVRQGEYI  
 CTLDYQRLYGTRCFSCDQFIEGEVVSALGKTYHPDCFVCAVCRLPFPFGDRVTFNGKECMQCPSLPVSV  
 GSSAHLSQLRSCGGCGTEIKNGQALVALDKHWHLGCFKCKSCGKLLNAEYISKDGLPYCEADYHAKFGI  
 RCDSEKEYITGRVLEAGEKHYPSCALCVRCQMFAEGEEMYLQSSIIWHPACRQAARTEDRNKETRTSS  
 ESIIISVPASSTSGSPSRVIYAKLGGIILDYRDLAALPKSKAIYIDRPMISYSPYISHSAGDRQSYGEG  
 DQDDRSYKQCRSSPSTGSVSLGRYTPTSRSPQHYSRPGSESGRSTPSLSVLSKPPSTYQQAPRHF  
 HVPDTGVKDNIIYRKPPIYRQHAARRSDGEDGSLDQDNRKKSSWLMLKGDADTRTNSPDLDTQSLSHSSGT  
 DRDPLQRMAGDSFHSRFPYSKSDPLPGHGKNGLDQRNANLAPCGADPDASWGMREYKIYPYDSLIVTNRI  
 RVKLPKDVDRTRLERHLSPEEFQEVFGMSIEEFDRLALWKRNDLKKKALLF

**TR**TRPLEQKLISEEDLAANDILDYKDDDDKV

**Chromatograms:**

[https://cdn.origene.com/chromatograms/mk8069\\_f05.zip](https://cdn.origene.com/chromatograms/mk8069_f05.zip)

Restriction Sites: SgfI-MluI

Cloning Scheme:



ACCN: NM\_001130084

ORF Size: 1833 bp

OTI Disclaimer: The molecular sequence of this clone aligns with the gene accession number as a point of reference only. However, individual transcript sequences of the same gene can differ through naturally occurring variations (e.g. polymorphisms), each with its own valid existence. This clone is substantially in agreement with the reference, but a complete review of all prevailing variants is recommended prior to use. [More info](#)

OTI Annotation: This clone was engineered to express the complete ORF with an expression tag. Expression varies depending on the nature of the gene.

Components: The ORF clone is ion-exchange column purified and shipped in a 2D barcoded Matrix tube containing 10ug of transfection-ready, dried plasmid DNA (reconstitute with 100 ul of water).

Reconstitution Method:

1. Centrifuge at 5,000xg for 5min.
2. Carefully open the tube and add 100ul of sterile water to dissolve the DNA.
3. Close the tube and incubate for 10 minutes at room temperature.
4. Briefly vortex the tube and then do a quick spin (less than 5000xg) to concentrate the liquid at the bottom.
5. Store the suspended plasmid at -20°C. The DNA is stable for at least one year from date of shipping when stored at -20°C.

RefSeq: [NM\\_001130084.2](#)

RefSeq ORF: 1836 bp

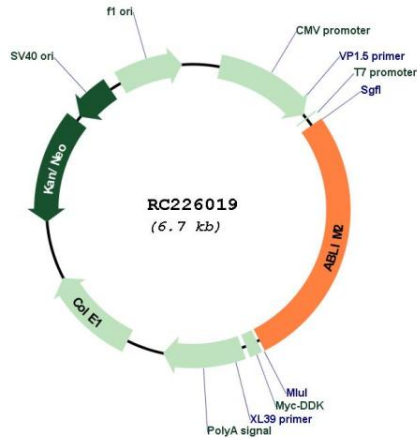
Locus ID: 84448

UniProt ID: [Q6H8Q1](#)

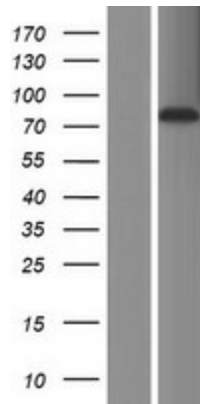
Cytogenetics: 4p16.1

**Protein Pathways:** Axon guidance  
**MW:** 67.6 kDa  
**Gene Summary:** May act as scaffold protein. May stimulate ABRA activity and ABRA-dependent SRF transcriptional activity.[UniProtKB/Swiss-Prot Function]

**Product images:**



Circular map for RC226019



Western blot validation of overexpression lysate (Cat# [LY427152]) using anti-DDK antibody (Cat# [TA50011-100]). Left: Cell lysates from untransfected HEK293T cells; Right: Cell lysates from HEK293T cells transfected with RC226019 using transfection reagent MegaTran 2.0 (Cat# [TT210002]).