

## Product datasheet for **RC226018**

### AHCYL2 (NM\_001130720) Human Tagged ORF Clone

#### Product data:

Product Type:	Expression Plasmids
Product Name:	AHCYL2 (NM_001130720) Human Tagged ORF Clone
Tag:	Myc-DDK
Symbol:	AHCYL2
Synonyms:	ADOHCYASE3; IRBIT2
Mammalian Cell Selection:	Neomycin
Vector:	pCMV6-Entry (PS100001)
E. coli Selection:	Kanamycin (25 ug/mL)



[View online »](#)

**ORF Nucleotide Sequence:**

>RC226018 representing NM\_001130720  
 Red=Cloning site Blue=ORF Green=Tags(s)

TTTTGTAATACGACTCACTATAGGGCGGCCGGAATTCGTCGACTGGATCCGGTACCGAGGAGATCTGCC  
 GCC**CGCATCGCC**

ATGTCGGTGCAGTTGTGTGTCAGCCGCGGCTGCCGCCAAGGTGCCTGAGGTGGAGCTGAAGGACCTGAGCC  
 CCTCCGAGGCGGAGTCGCAACTAGGACTGAGCACGGCCGCGTGGGCGCCATGGCCCCCGGCGGGCGG  
 TGGAGACCCTGAGGCTCCAGCTCCCGCCGCGGAGCGGCCCGGTCCCGGCCGGGCTCGGGGCCCGCC  
 GCCGCTCTCAGCCCCGCGCGGGAAGGTGCCTCAGGCGTCGGCCATGAAGCGGAGCGACCCACATCACC  
 AGCACCAGCGCACCGCGACGGCGGCGAGGCCCTGGTCAGCCCCGACGGCACCGTCACCGAGGCGCCGCG  
 CACAGTCAAGAAGATCCAGTTTGTGCTGACCAGAAGCAAGAATTCAACAAACGTCCCACCAAATTTGGACGT  
 CGCTCTTTGTCTCGTTCCATTTCTCAGTCATCTACTGACAGCTACAGCTCAGCGGCTTCATATACAGATA  
 GCTCTGATGATGAGACATCGCCAGGGACAAGCAGCAAAAGAACTCTAAGGGAAGCAGTGACTTCTGTGT  
 TAAGAACATCAACAGGCAGAGTTTGGACGAAGAGAAATTGAAATTTGCTGAACAAGAAATGCCTGCATTG  
 ATGGCTTTGAGGAAGAGAGCTCAAGGAGAAAAGCCTTTGGCTGGAGCCAAAATCGTGGGTTGCACACACA  
 TCACTGCTCAGACTGCTGTGCTTATGAAACTCTGGGTGCTCTGGGGGCCAGTGCCGATGGGCTGCCTG  
 CAACATCTATTCCACTCTCAATGAAGTGGCTGCTGCTCTAGCAGAAAGTGGATTTCTGTTTTGGCTGG  
 AAGGGAGAGTCAGAAGATGACTTTTGGTGGTGTATCGATAGATGTGTGAATGTGGAGGGCTGGCAGCCAA  
 ACATGATCTTGGATGATGGAGGGGATCTTACCCACTGGATTTATAAAAAGTATCCCAACATGTTTAAAGAA  
 AATCAAGGCATAGTAGAGGAGAGTGTACTGGAGTTCACAGGCTGTACCAACTGTCCAAAGCTGGGAAG  
 CTGTGTGTTCCAGCCATGAATGTCAATGACTCAGTCACCAAACAGAAATTTGACAACCTACTGTGTTGCC  
 TGAATCAATTCTTGATGGACTTAAAAGGACAACAGACATGATGTTTGGTGGAAAGCAAGTGGTAGTCTG  
 TGGCTATGGAGAGGTGGGAAAGGGTGTGTGCTGCCCTGAAAGCCATGGGCTCCATTGTGTATGTAAC  
 GAAATTGACCCCATCTGTGCCCTGCAAGCCTGTATGGATGGATTTGACTGGTGAATTAATGAGGTCA  
 TCCGACAAGTGGACATTGTTATTACCTGTACAGGTAACAAGAATGTGGTAACCAGAGAGCACTTGGACCG  
 TATGAAGAATAGCTGCATCGTTTGAACATGGGACATTCCAACACAGAGATTGACGTGGCGAGTCTGCGG  
 ACACCAGAACTGACCTGGGAGCGAGTGAGATCTCAAGTTGACCATGTGATATGGCCTGATGGCAAGAGGA  
 TAGTACTGCTGGCAGAGGGCCGCTGCTGAACCTTAGCTGCTCCACAGTGCCTACATTTGTGCTCTCAAT  
 CACTGCTACTACTCAGGCTCTTGCTTGTATAGAGCTTTACAATGCTCCTGAGGTCGCTATAAGCAGGAT  
 GTCTACCTGTTGCCAAGAAGATGGATGAGTATGTGGCCAGCCTACACCTGCCTACCTTTGATGCCCACT  
 TGACAGAGCTGACAGATGAACAGGCCAAGTATCTGGGACTCAACAAGAATGGGCCCTTCAAGCCTAATTA  
 CTACAGGTAT

**ACGCGT**ACGCGGCCGCTCGAGCAGAAACTCATCTCAGAAGAGGATCTGGCAGCAAATGATATCCTGGATT  
 ACAAGGATGACGACGATAAGGTTTAA

**Protein Sequence:**

>RC226018 representing NM\_001130720  
 Red=Cloning site Green=Tags(s)

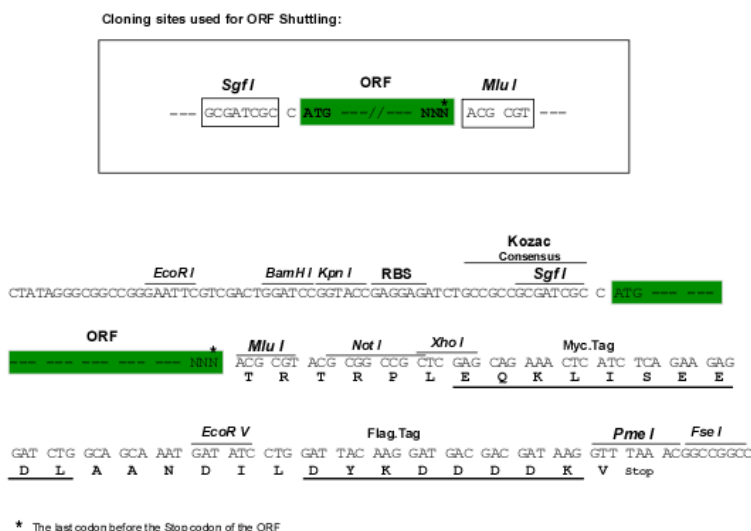
MSVQVVSAAAAKVPEVELKDLSPSEAESQLGLSTA AVGAMAPPAGGGDPEAPAPAAERPPVPGPGSGPA  
 AALSPAAGKVPQASAMKRSDPHHQHQRHRDGG EALVSPDGTVTEAPRTVKKIQFADQKQEFNKRPTKIGR  
 RSLSRISISQSSDYSYSSAASYTDSDDETS PRDKQQKNSKGSSDFCVKNIKQAEFGRREIEIAEQEMPAL  
 MALRKRAQGEKPLAGAKIVGCTHITAQTAVL METLGALGAQCRWAACNIYSTLNVEAAAALAESGFPVFAW  
 KGESEDDFWWCIDRCVNVVEGWQPNMILDDGG DLTHWIYKYPNMFKKIKGIVEESVTGVHRLYLQSKAGK  
 LCV PAMNVNDSVTKQKFDNL YCCRESILDGLKRTDMMFGGKQVVVCGYGEVKGCCAALKAMGSIYVVT  
 EIDPICALQACMDGFRLVKLNEVIRQVDIVIT CTGNKNVVTREHLDRMKNSCIVCNMGSNTEIDVASLR  
 TPELTWERVRSQVDHVIWPDGKRIVLLAEGRL LNLSCSTVPTFVLSITATTQALALIELYNAPEGRYKQD  
 VYLLPKKMDEYVASLHLPFD AHL TELTDEQAKYLG LNKNGPFPKNYYRY

**TRTRP**LEQKLISEEDLAANDILDYKDDDDKV

Chromatograms: [https://cdn.origene.com/chromatograms/mk8034\\_b12.zip](https://cdn.origene.com/chromatograms/mk8034_b12.zip)

Restriction Sites: SgfI-MluI

Cloning Scheme:



ACCN: NM\_001130720

ORF Size: 1830 bp

OTI Disclaimer: The molecular sequence of this clone aligns with the gene accession number as a point of reference only. However, individual transcript sequences of the same gene can differ through naturally occurring variations (e.g. polymorphisms), each with its own valid existence. This clone is substantially in agreement with the reference, but a complete review of all prevailing variants is recommended prior to use. [More info](#)

OTI Annotation: This clone was engineered to express the complete ORF with an expression tag. Expression varies depending on the nature of the gene.

Components: The ORF clone is ion-exchange column purified and shipped in a 2D barcoded Matrix tube containing 10ug of transfection-ready, dried plasmid DNA (reconstitute with 100 ul of water).

- Reconstitution Method:
1. Centrifuge at 5,000xg for 5min.
  2. Carefully open the tube and add 100ul of sterile water to dissolve the DNA.
  3. Close the tube and incubate for 10 minutes at room temperature.
  4. Briefly vortex the tube and then do a quick spin (less than 5000xg) to concentrate the liquid at the bottom.
  5. Store the suspended plasmid at -20°C. The DNA is stable for at least one year from date of shipping when stored at -20°C.

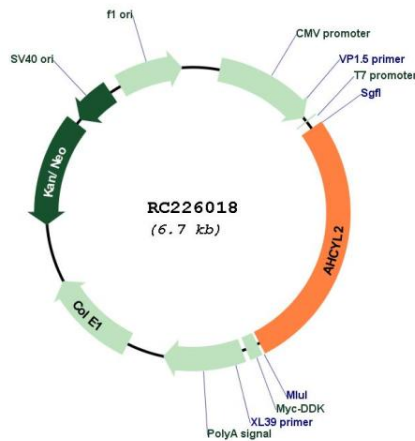
RefSeq: [NM\\_001130720.3](#)

RefSeq ORF: 1833 bp

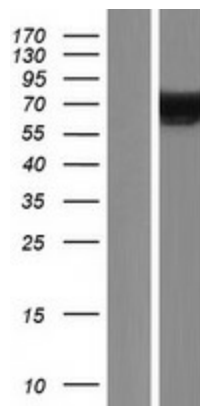
Locus ID: 23382

**UniProt ID:** [Q96HN2](#)  
**Cytogenetics:** 7q32.1  
**Protein Families:** Druggable Genome  
**Protein Pathways:** Cysteine and methionine metabolism, Metabolic pathways, Selenoamino acid metabolism  
**MW:** 66.4 kDa  
**Gene Summary:** The protein encoded by this gene acts as a homotetramer and may be involved in the conversion of S-adenosyl-L-homocysteine to L-homocysteine and adenosine. Several transcript variants encoding different isoforms have been found for this gene. [provided by RefSeq, Jun 2011]

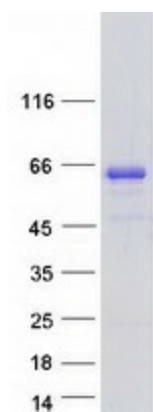
### Product images:



Circular map for RC226018



Western blot validation of overexpression lysate (Cat# [LY427264]) using anti-DDK antibody (Cat# [TA50011-100]). Left: Cell lysates from untransfected HEK293T cells; Right: Cell lysates from HEK293T cells transfected with RC226018 using transfection reagent MegaTran 2.0 (Cat# [TT210002]).



Coomassie blue staining of purified AHCYL2 protein (Cat# [TP326018]). The protein was produced from HEK293T cells transfected with AHCYL2 cDNA clone (Cat# RC226018) using MegaTran 2.0 (Cat# [TT210002]).