

Product datasheet for **RC226012**

RBM35A (ESRP1) (NM_001122827) Human Tagged ORF Clone

Product data:

Product Type:	Expression Plasmids
Product Name:	RBM35A (ESRP1) (NM_001122827) Human Tagged ORF Clone
Tag:	Myc-DDK
Symbol:	RBM35A
Synonyms:	DFNB109; RBM35A; RMB35A
Mammalian Cell Selection:	Neomycin
Vector:	pCMV6-Entry (PS100001)
E. coli Selection:	Kanamycin (25 ug/mL)



[View online »](#)

ORF Nucleotide Sequence:

>RC226012 representing NM_001122827
 Red=Cloning site Blue=ORF Green=Tags(s)

TTTTGTAATACGACTCACTATAGGGCGGCCGGGAATTCGTCGACTGGATCCGGTACCGAGGAGATCTGCC
 GCC**CGGATCGCC**

ATGACGGCCTCTCCGATTACTTGGTGGTCTTTTTGGGATCACTGCTGGGGCCACCGGGCCAAGCTAG
 GCTCGGATGAGAAGGAGTTGATCCTGCTGTTCTGGAAAGTCGTGGATCTGGCCAACAAGAAGGTGGGACA
 GTTGACGAAGTCTAGTTAGACCGGATCAGTTGAACTGACGGAGGACTGCAAAGAAGAACTAAAATA
 GACGTCGAAAGCCTGTCCTCGGCGTCGACGCTGGACCAAGCCCTCCGACGTTTAACCAAGTCAGTGAGCA
 ATGAACTGAATATTGGAGTAGGGACTTCTTCTGTCTGTACTGATGGGACGTTTATGTCAGGCAAAAT
 CCTGCATCCTGAGGCTTCCAAGAAGAATGACTATTACCTGAATGCTTCTATTCTTTTTTGTCTTCGA
 AAAGAATCAAGAATGTTGCCCTGGTTCACCTGATATTGACAACTGGACGTTGCCACAATGACAGAGT
 ATTTAAATTTGAGAAGAGTAGTTCAGTCTCTCGATATGGAGCCTCTCAAGTTGAAGATATGGGGAATAT
 AATTTTAGCAATGATTTAGAGCCTTATAATCACAGGTTTTAGATCCAGAGAGAGTGAATTACAAGTTT
 GAAAGTGGAACTTGACAGCAAGATGGAAGTATTGATGATAACACCGTAGTCAGGGCACGAGGTTTACCAT
 GGCAGTCTTCAGATCAAGATATTGCAAGATTCTCAAAGGACTCAATATTGCCAAGGGAGGTGCAGCACT
 TTGTCTGAATGCTCAGGGTCAAGGAACGGAGAAGCTCTGGTTAGGTTTGAAGTGAAGGACACCGAGAC
 CTAGCACTACAGAGGCACAAACATCACATGGGGACCCGGTATATTGAGGTTTACAAGCAACAGGTGAAG
 ATTTCTTAAAATTGCTGGTGGTACTTCCAATGAGGTAGCCAGTTTCTCTCAAGGAAAATCAAGTCAT
 TGTCCGCATGCGGGGCTCCCTTTCACGGCCACAGCTGAAGAAGTGGTGGCCTTCTTTGGACAGCATTGC
 CCTATTACTGGGGAAAGGAAGGCATCCTCTTTGTCACCTACCCAGATGGTAGGCCAACAGGGGACGCTT
 TTGCTCTTTGCCTGTGAGGAATATGCACAGAATGCGTTGAGGAAGCATAAAGACTTGTGGGTAAG
 ATACATTGAACTCTTCAGGAGCACAGCAGTGAAGTTCAGCAGGTGCTGAATCGATTCTCCTCGGCCCT
 CTCATTCCAATTCCAACCCCTCCATTATTCCAGTACTACCTCAGCAATTTGTGCCCCCTACAAATGTTA
 GAGACTGTATACGCCTTCGAGGTCTTCCCTATGCAGCCACAATTGAGGACATCCTGGATTTCTGGGGGA
 GTTCGCCACAGATATTCTACTCATGGGTTTACATGGTTTTGAATCACCGGGCCGCCATCAGGAGAT
 GCCTTTATCCAGATGAAGTCTGCGGACAGAGCATTATGGCTGCACAGAAGTGCATAAAAAAACATGA
 AGGACAGATATGTTGAAGTCTTTCAGTGTTCAGCTGAGGAGATGAACTTTGTGTTAATGGGGGCACCTT
 AAATCGAAATGGCTTATCCACCGCCATGCCTGTCTCCTCCTACACATTTCCAGCTCCTGCTGCA
 GTTATTCTACAGAAGCTGCCATTTACCAGCCCTCTGTGATTTTGAATCCACGAGCACTGCAGCCCTCCA
 CAGCGTACTACCCAGCAGGCACTCAGCTTTCATGAATTACACAGCGTACTATCCCAGTGT

ACGCGTACGCGGCCGCTCGAGCAGAAACTCATCTCAGAAGAGGATCTGGCAGCAAATGATATCCTGGATT
 ACAAGGATGACGACGATAAGGTTTAA

Protein Sequence:

>RC226012 representing NM_001122827
 Red=Cloning site Green=Tags(s)

MTASPDYLVVLFGITAGATGAKLGSDEKELILLFWKVVDLANKKVGQLHEVLVRPDQLELTEDCKEETKI
 DVESLSSASQLDQALRQFNQSVSNELNIGVTSFCLCTDQQLHVRQILHPEASKKNVLLPECFYSFFDLR
 KEFKKCCPGSPDIDKLDVATMTEYLNFEKSSSVSRYGASQVEDMGNIILAMISEPYNHRFSDPERVNYKF
 ESGTCSKMELEIDDNTVVRARGLPWQSSQDIARFFKGLNIAKGGAAALCLNAQRRNGEALVRFVSEEHRD
 LALQRHKHHMGRYIEVYKATGEDFLKIAAGTSNEVAQFLSKENQVIVMRGLPFTATAEEVVAFFGQHC
 PITGGKEGILFVTYPDGRPTGDAFVLFACEEYAQNALRKHKDLLGKRYIELFRSTAAEVQVLRNRFSSAP
 LIPLPTPIIPVLPQQFVPPTNVRDCIRLRGLPYAATIEDILDFLGEFATDIRTHGVHMLNHNQGRPSGD
 AFIQMSADRAFMAAQKCHKKNMKDRYVEVFQCSAEEMNFVLMGGTLNRNGLSPPPCLSPPSYTFPAPAA
 VIPTEAAIYQPSVILNPRALQPSTAYYPAGTQLFMNYTAYYPSV

TRTRPLEQKLISEEDLAANDILDYKDDDDKV

Chromatograms:

https://cdn.origene.com/chromatograms/mk8069_d05.zip

Restriction Sites: SgfI-MluI

Cloning Scheme:



ACCN: NM_001122827

ORF Size: 1812 bp

OTI Disclaimer: The molecular sequence of this clone aligns with the gene accession number as a point of reference only. However, individual transcript sequences of the same gene can differ through naturally occurring variations (e.g. polymorphisms), each with its own valid existence. This clone is substantially in agreement with the reference, but a complete review of all prevailing variants is recommended prior to use. [More info](#)

OTI Annotation: This clone was engineered to express the complete ORF with an expression tag. Expression varies depending on the nature of the gene.

Components: The ORF clone is ion-exchange column purified and shipped in a 2D barcoded Matrix tube containing 10ug of transfection-ready, dried plasmid DNA (reconstitute with 100 ul of water).

- Reconstitution Method:
1. Centrifuge at 5,000xg for 5min.
 2. Carefully open the tube and add 100ul of sterile water to dissolve the DNA.
 3. Close the tube and incubate for 10 minutes at room temperature.
 4. Briefly vortex the tube and then do a quick spin (less than 5000xg) to concentrate the liquid at the bottom.
 5. Store the suspended plasmid at -20°C. The DNA is stable for at least one year from date of shipping when stored at -20°C.

RefSeq: [NM_001122827.2](#)

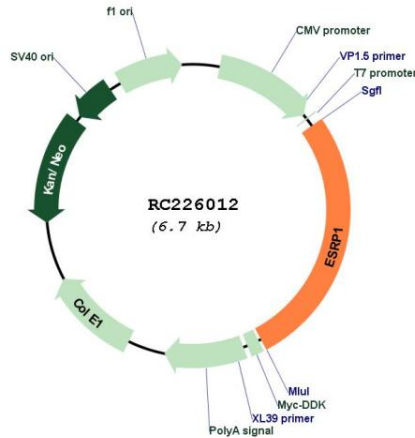
RefSeq ORF: 1815 bp

Locus ID: 54845

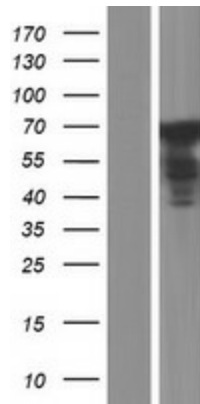
UniProt ID: [Q6NXG1](#)

Cytogenetics: 8q22.1
MW: 67 kDa
Gene Summary: ESRP1 is an epithelial cell-type-specific splicing regulator (Warzecha et al., 2009 [PubMed 19285943]).[supplied by OMIM, Aug 2009]

Product images:



Circular map for RC226012



Western blot validation of overexpression lysate (Cat# [LY426569]) using anti-DDK antibody (Cat# [TA50011-100]). Left: Cell lysates from untransfected HEK293T cells; Right: Cell lysates from HEK293T cells transfected with RC226012 using transfection reagent MegaTran 2.0 (Cat# [TT210002]).