

## Product datasheet for **RC226010**

### **SIGLEC11 (NM\_001135163) Human Tagged ORF Clone**

#### **Product data:**

Product Type:	Expression Plasmids
Product Name:	SIGLEC11 (NM_001135163) Human Tagged ORF Clone
Tag:	Myc-DDK
Symbol:	SIGLEC11
Mammalian Cell Selection:	Neomycin
Vector:	pCMV6-Entry (PS100001)
E. coli Selection:	Kanamycin (25 ug/mL)



[View online »](#)

**ORF Nucleotide Sequence:**

>RC226010 representing NM\_001135163  
 Red=Cloning site Blue=ORF Green=Tags(s)

TTTTGTAATACGACTCACTATAGGGCGGCCGGGAATTCGTGACTGGATCCGGTACCGAGGAGATCTGCC  
 GCC**CGGATCGCC**

ATGGTCCCAGGACAGGCCAGCCCCAGAGCCAGAGATGCTGCTGCTGCCCTGCTGCTGCCGTGCTGG  
 GGGCGGGTCCCTGAACAAGGATCCAGTTACAGTCTTCAAGTGCAGAGGCAGGTGCCGGTGCCGAGGG  
 CCTGTGTGTCATCGTGTCTTGAACCTCTCTACCCCCGGGATGGCTGGGACGAGTCTACTGCTGTTAT  
 GGCTACTGGTTCAAAGGACGGACAGCCCAAAGACGGGTGCTCCTGTGGCCACTAACACCAGAGTCGAG  
 AGGTGGAATGAGCACCCGGGACCGATTCCAGCTCACTGGGGATCCCAGCAAAGGAGCTGCTCCTTGGT  
 GATCAGAGACGCGCAGAGGGAGGATGAGGCATGGTACTTCTTTCGGGTGGAGAGAGGAAGCCGTGTGAGA  
 CATAGTTTCTGAGCAATGCGTTCTTTCTAAAAGTAACAGCCCTGACTAAGAAGCCTGATGTCTACATCC  
 CCGAGACCCTGGAGCCCGGGCAGCCGGTACGGTCACTGTGTGTTAACTGGGCTTCAAGAAATGTCC  
 AGCCCCCTTTCTCCTGGACGGGGCTGCCCTCTCCCCTAGAAGAACCAGACCAAGCACCTCCCCTTC  
 TCAGTGCTCAGCTTACGCCAGCCCCAGGACCACGACACCGACCTCACCTGCCATGTGGACTTCTCCA  
 GAAAGGTGTGAGCGCACAGAGGACCGTCCGACTCCGTGTGGCCTATGCCCCCAAAGACCTATTATCAG  
 CATTTACATGACAACACGTGAGCCCTGGAAGTCCAGGAAACGTATATATCTGGAAGTTCAGAAAGGC  
 CAGTTCCTGCGGCTCCTCTGTGCTGCTGACAGCCAGCCCCCTGCCACGCTGAGCTGGGCTCTGCAGGACA  
 GAGTCTCTCCTCGTCCCACCCCTGGGGCCCCAGAACCCTGGGGCTGGAGCTGCTGGGGTAAGGGCCGG  
 GGATTCAGGGCGTACACCTGCCAGCGGAGAACAGGCTTGGCTCCCAGCAGCAAGCCCTGGACCTCTCT  
 GTGCAGTATCCTCCAGAGAACCTGAGAGTGTGGTTTCCCAAGCAAACAGGACAGTCTGGAAAACCTCG  
 GCAAGTGCACATCCCTCCCGTCTGGAGGGCCAAAGCCTGCGCCTGGTGTGTGTACCCACAGCAGCCCC  
 CCCAGCCAGGCTGAGCTGGACCCGGTGGGACAGACCGTGGGCCCTCCCAGCCCTCAGACCCCGGGGTC  
 CTGGAGCTGCCACCCATTCAAATGGAGCACGAAGGAGAGTTACCTGCCACGCTCAGCACCTCTGGGCT  
 CCCAGCACGTCTCTCAGCCTCTCCGTGCACTGGAAGCTGGAGCATGGGGGAGGACTTGGCCTGGGGG  
 TGCCCTGGGAGCTGGCGTCGCTGCCCTGCTCGCTTTCTGTTCTGCTTGTGCTTTCAGGGTGAAGATC  
 TGCAGGAAGGAAGCTCGCAAGAGGGCAGCAGCTGAGCAGGACGTGCCCTCCACCTGGGACCCATCTCCC  
 AGGGTACCAGCATGAATGCTCGGCAGGACGCTCCAAGACCACCCGCCCCAGGTGCAGCCACCTACAC  
 CCCGGGAAGGGGAAGAGCAGGAGCTCCACTATGCCTCCCTCAGCTTCCAGGGCCTGAGGCTCTGGGAG  
 CCTGCGGACCAGGAGGCCCCAGCACCCGAGTACTCGGAGATCAAGATCCACACAGGACAGCCCTGA  
 GGGGCCAGGCTTGGGCTTCAATTGGAGAGGGAGATGTCAGGGATGGTTCCAAAG

**ACGCGT**ACGCGGCCGCTCGAGCAGAAACTCATCTCAGAAGAGGATCTGGCAGCAAATGATATCCTGGATT  
 ACAAGGATGACGACGATAAGGTTTAA

**Protein Sequence:**

>RC226010 representing NM\_001135163  
 Red=Cloning site Green=Tags(s)

MVPGQAQPQSPPELLLLPLLLPVLGAGSLNKDPSYSLQVQRQVPVPEGLCVIVSCNLSYPRDGWDESTAAY  
 GYWFKGRTPKTPGAPVATNNSREDEMSTRDRFQLTGDPKGGSCSLVIRDAQREDEAWYFFRVERGSRVR  
 HSFLSNAFFLKVTALTKKPDVYIPETLEPGQPVTVICVFNWAFKCPAPSFSWTGAALSPRRTRPSTSHF  
 SVLSFTSPQDHDLDLCHVDFSRKGVSAQRVRLRVAYAPKDLIISISHDNTSALELQGNVIYLEVQKG  
 QFLRLLCAADSQPPATLSWVLDQDRVLSHPWPGRPLGLELRGVRAGDSGRYTCRAENRLGSQQALDLS  
 VQYPPENLRVMVSQANRTVLENLNGTSLPVLGQSLRLVCVTHSSPPARLSWTRWGQTVGPSQPSDPGV  
 LELPPIQMEHEGEFTCHAQHPLGSQHVLSLSVHWKLEHGGGLGLGAALGAGVAALLAFCSCLVFRVKI  
 CRKEARKRAAAEQDVPSTLGPISQGHQHECSAGSSQDHPPPGAATYTPGKGEEQELHYASLSFQGLRLWE  
 PADQEAPSTTEYSEIKIHTGQPLRGPFGFLQLEREMSGMVPK

**TRTRPLEQKLI**SEEDLAANDILDYKDDDDK**V**

**Chromatograms:**

[https://cdn.origene.com/chromatograms/mk8069\\_c07.zip](https://cdn.origene.com/chromatograms/mk8069_c07.zip)

**Restriction Sites:** SgfI-MluI

**Cloning Scheme:**



**ACCN:** NM\_001135163

**ORF Size:** 1806 bp

**OTI Disclaimer:** Due to the inherent nature of this plasmid, standard methods to replicate additional amounts of DNA in E. coli are highly likely to result in mutations and/or rearrangements. Therefore, OriGene does not guarantee the capability to replicate this plasmid DNA. Additional amounts of DNA can be purchased from OriGene with batch-specific, full-sequence verification at a reduced cost. Please contact our customer care team at [custsupport@origene.com](mailto:custsupport@origene.com) or by calling 301.340.3188 option 3 for pricing and delivery.

The molecular sequence of this clone aligns with the gene accession number as a point of reference only. However, individual transcript sequences of the same gene can differ through naturally occurring variations (e.g. polymorphisms), each with its own valid existence. This clone is substantially in agreement with the reference, but a complete review of all prevailing variants is recommended prior to use. [More info](#)

**OTI Annotation:** This clone was engineered to express the complete ORF with an expression tag. Expression varies depending on the nature of the gene.

**Components:** The ORF clone is ion-exchange column purified and shipped in a 2D barcoded Matrix tube containing 10ug of transfection-ready, dried plasmid DNA (reconstitute with 100 ul of water).

- Reconstitution Method:**
1. Centrifuge at 5,000xg for 5min.
  2. Carefully open the tube and add 100ul of sterile water to dissolve the DNA.
  3. Close the tube and incubate for 10 minutes at room temperature.
  4. Briefly vortex the tube and then do a quick spin (less than 5000xg) to concentrate the liquid at the bottom.
  5. Store the suspended plasmid at -20°C. The DNA is stable for at least one year from date of shipping when stored at -20°C.

RefSeq: [NM\\_001135163.1](#), [NP\\_001128635.1](#)

RefSeq ORF: 1809 bp

Locus ID: 114132

UniProt ID: [Q96RL6](#)

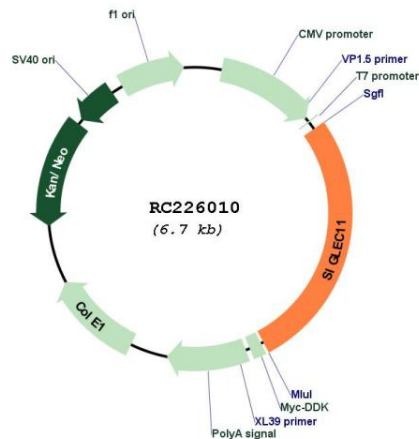
Cytogenetics: 19q13.33

Protein Families: Druggable Genome, Transmembrane

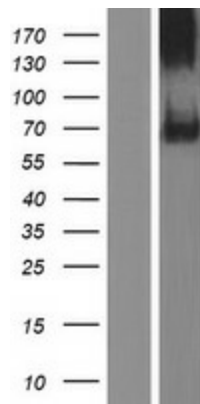
MW: 65.6 kDa

**Gene Summary:** This gene encodes a member of the sialic acid-binding immunoglobulin-like lectin family. These cell surface lectins are characterized by structural motifs in the immunoglobulin (Ig)-like domains and sialic acid recognition sites in the first Ig V set domain. This family member mediates anti-inflammatory and immunosuppressive signaling. Multiple transcript variants encoding different isoforms have been found for this gene. [provided by RefSeq, Oct 2011]

### Product images:



Circular map for RC226010



Western blot validation of overexpression lysate (Cat# [LY427568]) using anti-DDK antibody (Cat# [TA50011-100]). Left: Cell lysates from untransfected HEK293T cells; Right: Cell lysates from HEK293T cells transfected with RC226010 using transfection reagent MegaTran 2.0 (Cat# [TT210002]).