

## Product datasheet for **RC226006**

### **EBF4 (NM\_001110514) Human Tagged ORF Clone**

#### **Product data:**

Product Type:	Expression Plasmids
Product Name:	EBF4 (NM_001110514) Human Tagged ORF Clone
Tag:	Myc-DDK
Symbol:	EBF4
Synonyms:	COE4; O/E-4
Mammalian Cell Selection:	Neomycin
Vector:	pCMV6-Entry (PS100001)
E. coli Selection:	Kanamycin (25 ug/mL)



[View online »](#)

**ORF Nucleotide Sequence:**

>RC226006 representing NM\_001110514  
 Red=Cloning site Blue=ORF Green=Tags(s)

TTTTGTAATACGACTCACTATAGGGCGGCCGGAATTCGTCGACTGGATCCGGTACCGAGGAGATCTGCC  
 GCC**CGGATCGCC**

ATGGACGCTCTGCCCCGAGCGGGCTGAACCTGAAGGAGGAGCCGCTGCTGCCCGCCGGCTGGGCTCAG  
 TGCCTCCTGGATGCAGGGCGGGGCATCCTGGACGCCAGCACCGCGGCAGAGTGGCGTGGTCTGGC  
 ACGAGCACATTTTGAGAAGCAGCCTCCCTCCAACCTCAGGAAATCCAACCTTCTTCCACTTCGTGCTGGCC  
 ATGTACGACCGGCAGGGCAGCCCGTGGAGGTGGAGCGCACAGCCTTCATCGACTTCGTGAAAAAGGACC  
 GAGAGCCCGGGCGAAAAAGACTAAACAATGGGATCCATTACCGCCTCCGGCTGGTGTATAACAATGGACT  
 GCGGACAGAGCAAGACCTCTACGTGCGTCTCATCGACTCCATGTCCAACAGGCCATCATCTATAGGGG  
 CAGGACAAGAACCCGAAATGTGCCGAGTGTCTCACCATGAGATCATGTGCAGCCGGTGTGTGACC  
 GGAAGAGCTGTGGCAACCGGAATGAGACGCCCTCAGACCCGTCATCATTGACAGTTTCTCTCAAGTT  
 CTTCTCAAATGCAACCAGAAGTGCCTGAAGAATGCGGGGAATCCAGAGACATGCGCCGCTCCAGGTG  
 GTGGTGTCCACGACGGTGTGAGCGTGGACGGACACGTGTGGCCGTGTCCGACAACATGTTTGTGCACAACA  
 ACTCCAAGCATGGCCGACGGGCGCGCCCTGGACCCCTCCGAAGCTGCCACCCCTGCATCAAGGCCAT  
 CAGCCCCGGGAGGGCTGGACCACGGGCGGCCACCGTCATTGTTCATCGGCGACAACTTCTTCGACGGG  
 TTGAGGTCGTGTTTCGAAACGTGCTCGTGTGGAGCGAGCTCATCACGCCACGCCATCCGGGTGCAGA  
 CGCCCCCGCGGCACATCCCCGGGTGGTGGAGGTGACCCCTCTCTACAAGTCCAAGCAGTTTTGCAAGGG  
 ATGCCCGGCGCTTTGTCTACACAGCTCTGAACGAGCCACCATTGACTACGGATTCCAGAGGCTACAG  
 AAAGTCATTCCAGACACCCCGGAGACCCCGAGAGGCTGCCAAGGAAGTGTCTGAAGCGGGCGGCCG  
 ACTTGGCAGAAGCCCTGTACGGAGTGCCCGCAGTAACAGGAGCTGCTCCTGAAGCCGCGGGCAGCT  
 GGCCGAGGCTCTGTACAGCACCCCGCGCACCCGGGCGGCTCGCACCCCTGGCCCGAGCCACCCACAC  
 CCCGCCGTCGTGGGCATCAACGCCTTCAGCAGCCGCTGGCCATCGCCGTGCGGGACGCCACCCGGGGC  
 CCGAGCCGGGCTACGCGCGCAGCTGCAGCAGCGCTCCCCCGCGGGTTCGCGCCAGCCCGGCTCGCA  
 GCAGAGCGGCTACGGCGCGGCCCTCGGAGCTGGCTGGCGGCTACGGCGCGCGGGCGTGGCCGGCCTC  
 GGCGTGCCTGGTCCCCAGCTTCTCAATGGCTCCACCACCCTCGCCCTTCGCCATCATGCCCTCTA  
 GCCCCCCGCTGGCGGCTGCTCCTCATGTCCCTCCGCGCGTCCCCACCACCAGCGTGTCTCCTT  
 CTCGCTGTCAACATGATCTCCGCGTCAAACAGAGGAGCGCTTCGCCCGTGTGCGCCCCCAAGC  
 TCCCCACCCAGGCTGCCCGAGCCACGGAGAGGGGCTTCAGACCAGTCTTTGAGGATTCTGACA  
 AGTTTCACTCTCCAGCCGGGGCTTCAGGGCCTGGCATACTCC

**ACGCGT**ACGCGGCGGCTCGAGCAGAACTCATCTCAGAAGAGGATCTGGCAGCAAATGATATCCTGGATT  
 ACAAGGATGACGACGATAAGGTTTAA

**Protein Sequence:**

>RC226006 representing NM\_001110514  
 Red=Cloning site Green=Tags(s)

MDALPRSGLNLKEEPLLPAGLGSVRSWMQAGILDASTAAQSGVGLARAHFEKQPPSNLRKSNFFHFVLA  
 MYDRQQQPVEVERTAFIDFVEKDREPGAETNNGIHYRLRLVYNNGLRTEQDLYVRLIDSMKQAIIEYEG  
 QDKNPEMCRVLLTHEIMCSRCCDRKSCGNRNETPSDPVIDRFFLKFFLKNQNLKNAGNPRDMRRFQV  
 VVSTTVSVDGHVLAUSDNMFVHNSKHGRRARRLDPSEATPCIKAISPGEGWTTGGATVIVIGDNFFDG  
 LQVVFGNVLVWSELITPHAIRVQTPPRHIPGVVEVTL SYKSKQFCGCPGRFVYALNEPTIDYGFQRLQ  
 KVIPRHPGDPERLPKEVLLKRAADLAEALYGVPGSNQELLLKRAADVAEALYSTPRAPGPLAPLAPSHPH  
 PAVVGINAFSSPLAIAVGDATPGPEPGYARSCSSASPRGFAPSPGSQSGYGGGLGAGLGGYGAPGVAGL  
 GVPGPSFLNGSTATSPFAIMPSSPPLAAASSMSLPAAAPTTSVFSFSPVNMISAVKQRSAPVLRPPS  
 SPPQACPRAHGEGLPDQSFEDSKFHSPARGLQGLAYS

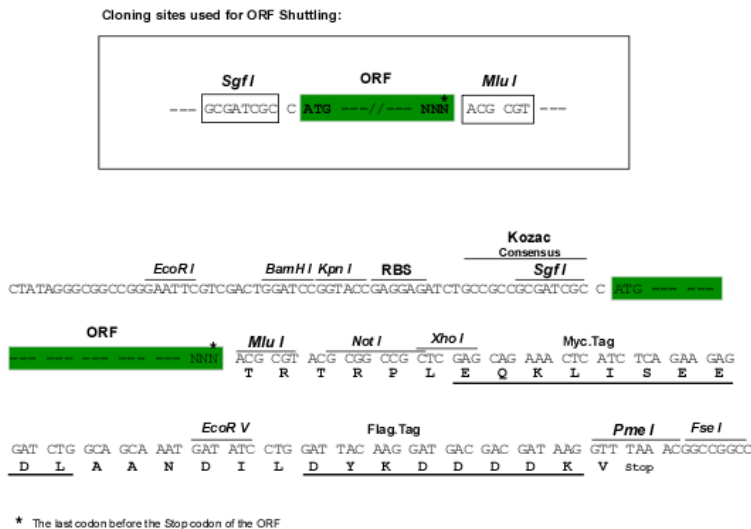
**TR**TRPLEQKLISEEDLAANDILDYKDDDDKV

**Chromatograms:**

[https://cdn.origene.com/chromatograms/mk8034\\_c01.zip](https://cdn.origene.com/chromatograms/mk8034_c01.zip)

Restriction Sites: SgfI-MluI

Cloning Scheme:



ACCN: NM\_001110514

ORF Size: 1794 bp

OTI Disclaimer: The molecular sequence of this clone aligns with the gene accession number as a point of reference only. However, individual transcript sequences of the same gene can differ through naturally occurring variations (e.g. polymorphisms), each with its own valid existence. This clone is substantially in agreement with the reference, but a complete review of all prevailing variants is recommended prior to use. [More info](#)

OTI Annotation: This clone was engineered to express the complete ORF with an expression tag. Expression varies depending on the nature of the gene.

Components: The ORF clone is ion-exchange column purified and shipped in a 2D barcoded Matrix tube containing 10ug of transfection-ready, dried plasmid DNA (reconstitute with 100 ul of water).

- Reconstitution Method:
1. Centrifuge at 5,000xg for 5min.
  2. Carefully open the tube and add 100ul of sterile water to dissolve the DNA.
  3. Close the tube and incubate for 10 minutes at room temperature.
  4. Briefly vortex the tube and then do a quick spin (less than 5000xg) to concentrate the liquid at the bottom.
  5. Store the suspended plasmid at -20°C. The DNA is stable for at least one year from date of shipping when stored at -20°C.

RefSeq: [NM\\_001110514.1](#), [NP\\_001103984.1](#)

RefSeq ORF: 1797 bp

Locus ID: 57593

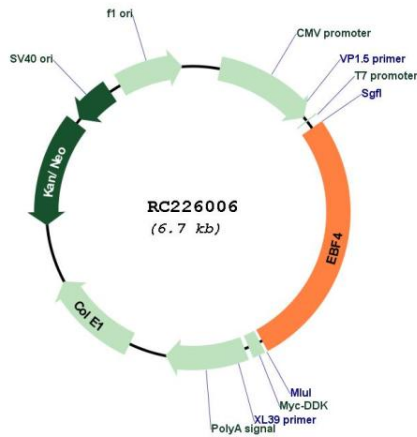
UniProt ID: [Q9BQW3](#)

**Cytogenetics:** 20p13

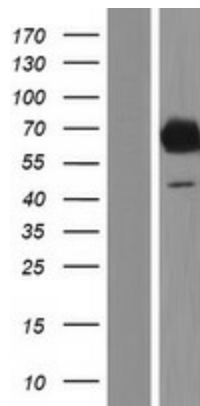
**MW:** 63.8 kDa

**Gene Summary:** EBF4 belongs to the conserved Olf/EBF family of helix-loop-helix transcription factors, members of which play important roles in neural development and B-cell maturation (Wang et al., 2002 [PubMed 12139918]).[supplied by OMIM, Mar 2008]

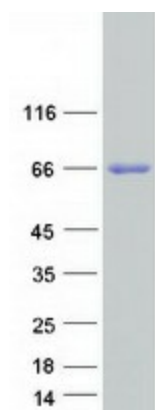
**Product images:**



Circular map for RC226006



Western blot validation of overexpression lysate (Cat# [LY426327]) using anti-DDK antibody (Cat# [TA50011-100]). Left: Cell lysates from untransfected HEK293T cells; Right: Cell lysates from HEK293T cells transfected with RC226006 using transfection reagent MegaTran 2.0 (Cat# [TT210002]).



Coomassie blue staining of purified EBF4 protein (Cat# [TP326006]). The protein was produced from HEK293T cells transfected with EBF4 cDNA clone (Cat# RC226006) using MegaTran 2.0 (Cat# [TT210002]).