

Product datasheet for **RC225997**

Paxillin (PXN) (NM_001080855) Human Tagged ORF Clone

Product data:

Product Type:	Expression Plasmids
Product Name:	Paxillin (PXN) (NM_001080855) Human Tagged ORF Clone
Tag:	Myc-DDK
Symbol:	Paxillin
Mammalian Cell Selection:	Neomycin
Vector:	pCMV6-Entry (PS100001)
E. coli Selection:	Kanamycin (25 ug/mL)



[View online »](#)

ORF Nucleotide Sequence:

>RC225997 representing NM_001080855
 Red=Cloning site Blue=ORF Green=Tags(s)

TTTTGTAATACGACTCACTATAGGGCGGCCGGGAATTCGTCGACTGGATCCGGTACCGAGGAGATCTGCC
 GCC**GCGATCGCC**

ATGGACGACCTCGACGCCCTGCTGGCGGACTTGGAGTCTACCACCTCCCACATCTCCAAACGGCCTGTGT
 TCTTGTGCGGAGGAGACCCCTACTCATACCCAACCTGAAAACACACATACCAGGAGATTGCCGTGCCACC
 CCCCCTCCCCACCCCGTCCAGCGAGGCCCTCAATGGCACAATCCTTGACCCCTTAGACCAGTGGCAG
 CCCAGCAGCTCCCGATTATCCACCAGCAGCCTCAGTCTCATCACCTGTGTACGGCTCCAGTGCCAAAA
 CTTCCAGTGTCTCAACCCTCAGGACAGTGTGGCTCTCCGTGCTCCCGAGTGGGTGAGGAGGAGCAGT
 CTACAGCTTCCCAACAAGCAGAAATCAGCTGAGCCTTCAACCACCGTAATGAGCACGTCCCTGGCAGC
 AACCTTTCTGAACCTGACCGCCTGCTGCTGGAACCTGACGCTGTACAGCATAACCCGCCAGGCTTCCCTG
 CAGATGAGGCCAACTCAAGCCCCCGCTTCTGGGGCCCTGAGCCCCCTATGGTGTCCAGAGACTAA
 CAGCCCCCTGGGAGGCAAAGCTGGGCCCTGACAAAAGAGAAGCCTAAGCGGAATGGGGGCCGGGCGCTG
 GAGGACGTGCGGCCAGTGTGGAGAGTCTTGGATGAACTGGAGAGCTCCGTGCCACGCCCTCCCTG
 CCATCACTGTGAACAGGGCGAGATGAGCAGCCCGCAGCGGTACCTCCACCAACAGCAGACACGCAT
 CTCGGCTCCTCTGCCACCAGGGAGCTGGACGAGCTGATGGCTTCGCTGTCCGATTTCAAGATCCAGGGC
 CTGGAGCAAAGAGCGGATGGGGAGCGGTGCTGGCGGCCGGCTGGCTCGGGACGGCGGGCGGAGCAGCC
 CCGGAGGGCAGGACGAGGGAGGGTTTATGGCCAGGGGAAGACAGGGAGCAGCTCACCCCTGGGGGGCC
 CCCGAAGCCCGGAGCCAGCTGGACAGCATGCTGGGGAGCCTGCAGTCTGACCTGAACAAGCTGGGGGTG
 GCCACAGTCGCCAAAGGAGTCTCGGGGCTGCAAGAAGCCATCGCCGGCAGGTTGTGACCCCATGG
 GGAAGACGTGGCACCCCGAGCACTTCTGCTGCACCCACTGCCAGGAGGAGATCGGATCCCGAACTTCTT
 CGAGCGGGATGGACAGCCCTACTGTGAAAAGACTACCACAACCTTCTCCCGCGCTGCTACTACTG
 AACGGCCCATCCTGGATAAAGTGGTGACGCCCTTGACCGGACGTGGCACCCCTGAACACTTCTTCTGTG
 CACAGTGTGGAGCCTTCTTGGTCCCGAAGGGTCCACGAGAAGGACGGCAAGGCCTACTGTCGAAAGGA
 CTACTTCGACATGTTTCGACCCCAAGTGTGGCGGCTGCGCCCGGGCCATCCTGGAGAACTATATCTCAGCC
 CTCAACACGCTGTGGCATCCTGAGTGTGTTGTGTCGGGAATGCTTACGCCATTCGTGAACGGCAGCT
 TCTTCGAGCAGCAGGGCAGCCCTACTGTGAGGTGCACTACCACGAGCGGCGGCTCGTGTGTTCTGG
 CTGCCAGAAGCCATCACCGCCGCTGCATCACCGCCATGGCCAAGAAGTCCACCCCGAGCACTTCGTC
 TGTGCCTTCTGCCTCAAGCAGCTCAACAAGGGCACCTTCAAGGAGCAGAACGACAAGCCTTACTGTCAGA
 ACTGCTTCTCAAGCTTCTCTGC

ACGCGTACGCGGCCGCTCGAGCAGAAACTCATCTCAGAAGAGGATCTGGCAGCAAATGATATCCTGGATT
 ACAAGGATGACGACGATAAGGTTTAA

Protein Sequence:

>RC225997 representing NM_001080855
 Red=Cloning site Green=Tags(s)

MDDL DALLADLESTTSHISKRPVFLSEETPYSYPTGNHTYQEIAVPPVPPPPSSEALNGTILDPLDQWQ
 PSSSRFIHQQPQSSSPVYGSSAKTSSVSNPQDSVGSPPSRVGEHVVYSPFNKQKSAEPSPTVMSTSLGS
 NLSELDRLLELNAVQHNPPGFPADEANSSPPLPGALSPLYGVPETNSPLGGKAGPLTKEPKRNGRGL
 EDVRPSVESLLELESSVPSVPAITVNQEMSSPQRVTSTQQQTRISASSATRELDLMASLSDFKIQG
 LEQRADGERCWAAGWPRDGGRRSPGGQDEGGFMAQGKTGSSSPGGPPKPGSQLDSMLGSLQSDLNKLGV
 ATVAKGVCGACKPIAGQVVTAMGKTWHPEHFVCTHCQEEIGSRNFFERDGPYCEKDYHNLFSRCPYYC
 NGPILDKVVTALDRTWHPEHFFCAQCGAFFGPEGFHEKDGKAYCRKDYDFDMFAPKCGGCARAIENYISA
 LNTLWHPECFVCRECFTPFVNGSFFEHDGQPYCEVHYHERRGSLCSGCQKPIITGRCITAMAKKFHPEHFV
 CAFCLKQLNKGTfKEQNDKPYCQNCFLKLF

TRTRPLEQKLISEEDLAANDILDYKDDDDKV

Chromatograms:

https://cdn.origene.com/chromatograms/mk8068_g09.zip

Restriction Sites: SgfI-MluI

Cloning Scheme:



ACCN: NM_001080855

ORF Size: 1773 bp

OTI Disclaimer: The molecular sequence of this clone aligns with the gene accession number as a point of reference only. However, individual transcript sequences of the same gene can differ through naturally occurring variations (e.g. polymorphisms), each with its own valid existence. This clone is substantially in agreement with the reference, but a complete review of all prevailing variants is recommended prior to use. [More info](#)

OTI Annotation: This clone was engineered to express the complete ORF with an expression tag. Expression varies depending on the nature of the gene.

Components: The ORF clone is ion-exchange column purified and shipped in a 2D barcoded Matrix tube containing 10ug of transfection-ready, dried plasmid DNA (reconstitute with 100 ul of water).

- Reconstitution Method:**
1. Centrifuge at 5,000xg for 5min.
 2. Carefully open the tube and add 100ul of sterile water to dissolve the DNA.
 3. Close the tube and incubate for 10 minutes at room temperature.
 4. Briefly vortex the tube and then do a quick spin (less than 5000xg) to concentrate the liquid at the bottom.
 5. Store the suspended plasmid at -20°C. The DNA is stable for at least one year from date of shipping when stored at -20°C.

RefSeq: [NM_001080855.3](#)

RefSeq ORF: 1776 bp

Locus ID: 5829

UniProt ID: [P49023](#)

Cytogenetics: 12q24.23

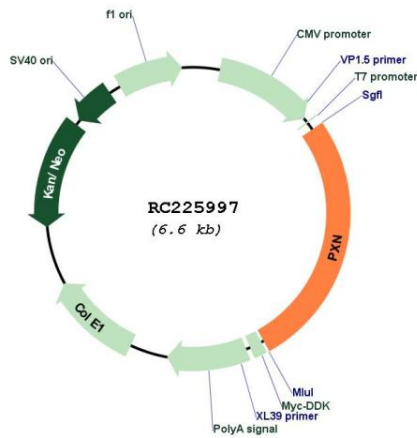
Protein Families: Druggable Genome, Stem cell - Pluripotency

Protein Pathways: Chemokine signaling pathway, Focal adhesion, Leukocyte transendothelial migration, Regulation of actin cytoskeleton, VEGF signaling pathway

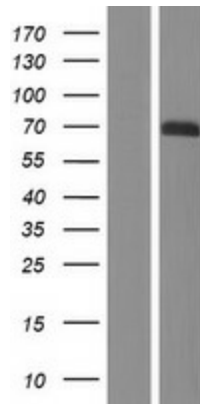
MW: 64.3 kDa

Gene Summary: This gene encodes a cytoskeletal protein involved in actin-membrane attachment at sites of cell adhesion to the extracellular matrix (focal adhesion). Alternatively spliced transcript variants encoding different isoforms have been described for this gene. These isoforms exhibit different expression pattern, and have different biochemical, as well as physiological properties (PMID:9054445). [provided by RefSeq, Aug 2011]

Product images:



Circular map for RC225997



Western blot validation of overexpression lysate (Cat# [LY425922]) using anti-DDK antibody (Cat# [TA50011-100]). Left: Cell lysates from untransfected HEK293T cells; Right: Cell lysates from HEK293T cells transfected with RC225997 using transfection reagent MegaTran 2.0 (Cat# [TT210002]).