

Product datasheet for **RC225994**

LRRTM4 (NM_001134745) Human Tagged ORF Clone

Product data:

Product Type:	Expression Plasmids
Product Name:	LRRTM4 (NM_001134745) Human Tagged ORF Clone
Tag:	Myc-DDK
Symbol:	LRRTM4
Mammalian Cell Selection:	Neomycin
Vector:	pCMV6-Entry (PS100001)
E. coli Selection:	Kanamycin (25 ug/mL)



[View online »](#)

ORF Nucleotide Sequence:

>RC225994 representing NM_001134745
 Red=Cloning site Blue=ORF Green=Tags(s)

TTTTGTAATACGACTCACTATAGGGCGGCCGGAATTCGTCGACTGGATCCGGTACCGAGGAGATCTGCC
 GCC**CGGATCGCC**

ATGGGTTTCCATTTAATTACGCAGCTGAAAGGCATGAGTGTGGTCTGGTCTACTTCTACACTGCTGC
 TTGTTATGCTCACGGGTGCTCAGAGAGCTTGCCAAAGAAGTGCAGATGTGATGGCAAAATTGTGTACTG
 TGAGTCTCATGCTTTCGAGATATCCCTGAGAATTTCTGGAGGGTCAACAAGGCTTATCATTAAAGTTC
 AACAGCATTGAGAAGCTCAAATCCAATCAGTTTCCCGCCTTAACCAGCTTATATGGCTTTATCTTGACC
 ATAATTACATTAGCTCAGTGGATGAAGATGCATTTCAAGGGATCCGTAGACTGAAAGAATTAATTCTAAG
 CTCCAACAAAATTAATTCTGCACAATAAAACATTTACCCAGTTCCCAATCTCCGCAATCTGGACCTC
 TCCTACAATAAGCTTTCAGACATTGCAATCTGAACAATTTAAAGGCCTTCGAAACTCATTTTTGCACT
 TGAGATCTAACTACTAAAGACTGTGCCATAAGAGTTTTCAAGACTGTCGGAATCTTGATTTTTTGGAA
 TTTGGGTTACAATCGTCTTCAAGCTTGTCCGAAATGCATTTGCTGGCCTCTTGAAGTTAAAGGAGCTC
 CACCTGGAGCACAAACAGTTTTCCAAGTCAACTTTGCTCAATTTCCACGTCTCTTCAACCTCCGCTCAA
 TTTACTTACAATGGAACAGGATTCGCTCCATTAGCCAAGGTTTGACATGGACTTGGAGTTCTTACACAA
 CTTGGATTTATCAGGGAATGACATCCAAGGAATTGAGCCGGGCACATTTAAATGCCTCCCAATTTACAA
 AAATTTGAATTTGGATTCCAACAAGCTCACCAATATCTCACAGGAAACTGTCAATGCGTGGATATCATTAA
 TATCCATCACATTGTCTGGAAATATGTGGGAATGCAGTCGGAGCATTGTCTTTATTTTATTGGCTTAA
 GAATTTCAAAGGAAATAAGGAAAGCACCATGATATGTGCGGGACCTAAGCACATCCAGGGTGAAGGTT
 AGTGTGACAGTGGAAACATATAATATCTGTTCTGAAGTCCAGGTGGTCAACACAGAAAGATCACACCTGG
 TGCCCCAAACTCCCAGAAACCTCTGATTATCCCTAGACCTACCATCTTCAAACCTGACGTCACCCAATC
 CACCTTTGAAACACCAAGCCCTTCCCAGGGTTTCAGATTCTGCGCAGAGCAAGAGTATGAGCATGTT
 TCATTTACAAAATTATTGCCGGGAGTGTGGCTCTCTTCTCTCAGTGGCCATGATCCTCTTGGTATCT
 ATGTGTCTTGAAACGCTACCCAGCCAGCATGAAACAACCTCCAGCAACACTCTCTTATGAAGAGGCGGCG
 GAAAAAGGCCAGAGAGTCTGAAAGACAAATGAATTCCTTTACAGGAGTATTATGTGGACTACAAGCTT
 ACAAACTCTGAGACCATGGATATATCGTTAATGGATCTGGGCCCTGCACATATACCATCTCTGGCTCCA
 GGGAAATGTGAGATGCCACACCACATGAAGCCCTTGCCATATTACAGCTATGACCAGCCTGTGATCGGGTA
 CTGCCAGGCCACCAGCCACTCCATGTCACCAAGGGCTATGAGACAGTGTCTCCAGAGCAGGACGAAAGC
 CCCGGCTGGAGCTGGCCGAGACCACAGCTTCATCGCCACCATCGCCAGGTGCGCAGCACCGGCCATCT
 ACCTAGAGAGAATTGCAAC

ACGCGTACGCGGCGGCTCGAGCAGAAACTCATCTCAGAAGAGGATCTGGCAGCAAATGATATCCTGGATT
 ACAAGGATGACGACGATAAGGTTTAA

Protein Sequence:

>RC225994 representing NM_001134745
 Red=Cloning site Green=Tags(s)

MGFHLITQLKGM SVVLVLLPTLLLVMLTGAQRACPKNCRCDGKIVYCESHAFADIPENISGGSQGLSLRF
 NSIQKLKSNQFAGLNQLIWL YLDHNYISSVDEDAFQGIRRLKELILSSNKITYLHNKTFHPVNLRLDL
 SYNKLQTLQSEQFKGLRKL IILHLRSNSLKTVP IRVFQDCRNLDLFDLGYNRLRSLSRNAFAGLLKEL
 HLEHNQFSKINF AHFPRLFNLR SIYLQWNRIRSI SQGLTWTWSSLHNLDL SGNDIQGIIEPGTFKCLPNLQ
 KLNLD SNKLTNISQETVNAWISL ISITL SGNMWECSRSICPLFYWLKNFKGNKESTMICAGPKHIQGEKV
 SDAVETYNICSEVQV VNTERSHLVPQTPQKPLI IPRPTIFKPDVTQSTFETPSPSPGFQIPGAEQEYEHV
 SFHKIIAGSVALFLSVAMILLVIYVSWKRY PASMQLQHQHSLMKRRRKKARESERQMNSPLQEYYVDYKP
 TNSETMDISVNGSGPCTYTI SGRRECEMPHHMKPLPYYSYDQPVIGYCAHQPLHVTKGYETVSPQEDES
 PGLLELRDHSFIATIARSAAPAIYLERIAN

TRTRPLEQKLISEEDLAANDILDYKDDDDKV

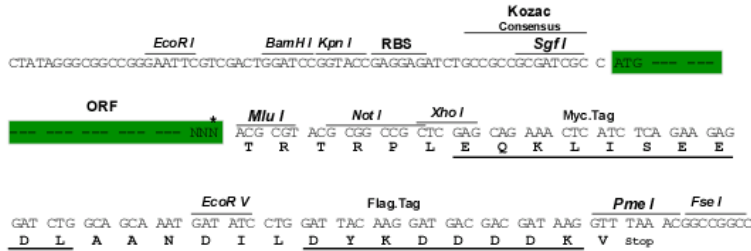
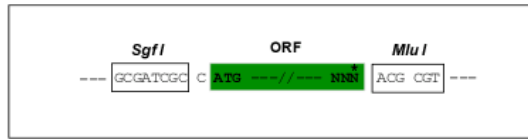
Chromatograms:

https://cdn.origene.com/chromatograms/mk8006_d04.zip

Restriction Sites: SgfI-MluI

Cloning Scheme:

Cloning sites used for ORF Shutting:



* The last codon before the Stop codon of the ORF

ACCN: NM_001134745

ORF Size: 1770 bp

OTI Disclaimer: The molecular sequence of this clone aligns with the gene accession number as a point of reference only. However, individual transcript sequences of the same gene can differ through naturally occurring variations (e.g. polymorphisms), each with its own valid existence. This clone is substantially in agreement with the reference, but a complete review of all prevailing variants is recommended prior to use. [More info](#)

OTI Annotation: This clone was engineered to express the complete ORF with an expression tag. Expression varies depending on the nature of the gene.

Components: The ORF clone is ion-exchange column purified and shipped in a 2D barcoded Matrix tube containing 10ug of transfection-ready, dried plasmid DNA (reconstitute with 100 ul of water).

Reconstitution Method:

1. Centrifuge at 5,000xg for 5min.
2. Carefully open the tube and add 100ul of sterile water to dissolve the DNA.
3. Close the tube and incubate for 10 minutes at room temperature.
4. Briefly vortex the tube and then do a quick spin (less than 5000xg) to concentrate the liquid at the bottom.
5. Store the suspended plasmid at -20°C. The DNA is stable for at least one year from date of shipping when stored at -20°C.

RefSeq: [NM_001134745.2](#)

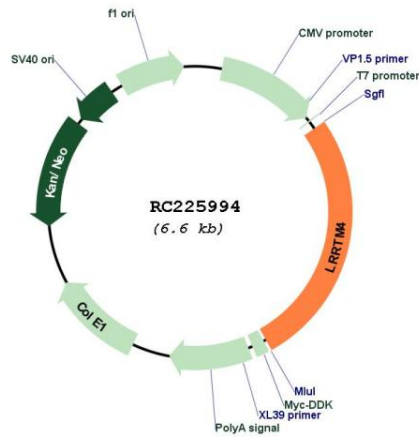
RefSeq ORF: 1773 bp

Locus ID: 80059

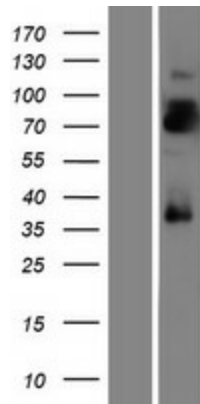
UniProt ID: [Q86VH4](#)

Cytogenetics: 2p12
Protein Families: Transmembrane
MW: 67 kDa
Gene Summary: May play a role in the development and maintenance of the vertebrate nervous system. Exhibits strong synaptogenic activity, restricted to excitatory presynaptic differentiation (By similarity).[UniProtKB/Swiss-Prot Function]

Product images:



Circular map for RC225994



Western blot validation of overexpression lysate (Cat# [LY427484]) using anti-DDK antibody (Cat# [TA50011-100]). Left: Cell lysates from untransfected HEK293T cells; Right: Cell lysates from HEK293T cells transfected with RC225994 using transfection reagent MegaTran 2.0 (Cat# [TT210002]).