

## Product datasheet for **RC225990L2V**

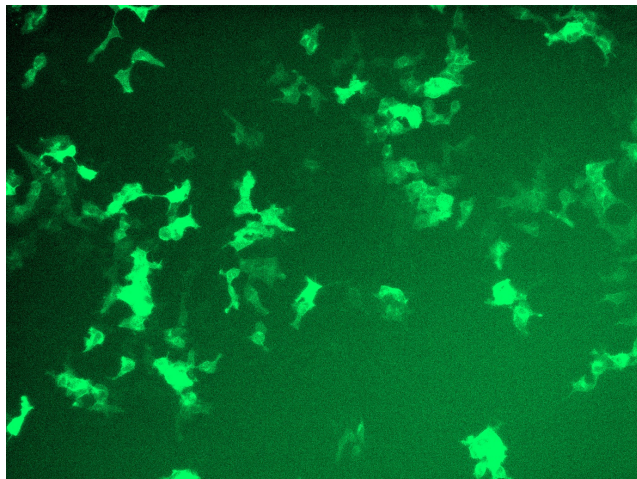
### **LRRC15 (NM\_001135057) Human Tagged ORF Clone Lentiviral Particle**

#### **Product data:**

Product Type:	Lentiviral Particles
Product Name:	LRRC15 (NM_001135057) Human Tagged ORF Clone Lentiviral Particle
Symbol:	LRRC15
Synonyms:	LIB
Mammalian Cell Selection:	None
Vector:	pLenti-C-mGFP (PS100071)
Tag:	mGFP
ACCN:	NM_001135057
ORF Size:	1761 bp
ORF Nucleotide Sequence:	The ORF insert of this clone is exactly the same as(RC225990).
OTI Disclaimer:	The molecular sequence of this clone aligns with the gene accession number as a point of reference only. However, individual transcript sequences of the same gene can differ through naturally occurring variations (e.g. polymorphisms), each with its own valid existence. This clone is substantially in agreement with the reference, but a complete review of all prevailing variants is recommended prior to use. <a href="#">More info</a>
OTI Annotation:	This clone was engineered to express the complete ORF with an expression tag. Expression varies depending on the nature of the gene.
RefSeq:	<a href="#">NM_001135057.1</a> , <a href="#">NP_001128529.1</a>
RefSeq ORF:	1764 bp
Locus ID:	131578
UniProt ID:	<a href="#">Q8TF66</a>
Cytogenetics:	3q29
Protein Families:	Transmembrane
MW:	64.8 kDa



[View online »](#)

**Product images:**

[RC225990L2] was used to prepare Lentiviral particles using [TR30037] packaging kit. HEK293T cells were transduced with RC225990L2V particle to overexpress human LRRC15-mGFP fusion protein.