

## Product datasheet for **RC225983**

### AGFG1 (NM\_001135187) Human Tagged ORF Clone

#### Product data:

Product Type:	Expression Plasmids
Product Name:	AGFG1 (NM_001135187) Human Tagged ORF Clone
Tag:	Myc-DDK
Symbol:	AGFG1
Synonyms:	HRB; RAB; RIP
Mammalian Cell Selection:	Neomycin
Vector:	pCMV6-Entry (PS100001)
E. coli Selection:	Kanamycin (25 ug/mL)



[View online »](#)

**ORF Nucleotide Sequence:**

>RC225983 representing NM\_001135187  
 Red=Cloning site Blue=ORF Green=Tags(s)

TTTTGTAATACGACTCACTATAGGGCGGCCGGGAATTCGTCGACTGGATCCGGTACCGAGGAGATCTGCC  
 GCC**CGCATCGCC**

ATGGCGGCCAGCGGAAGCGGAAGCAGGAGGAGAAGCACCTGAAGATGCTGCGGGACATGACCCGGCCTCC  
 CGCACAACCGAAAAGTGTTCGACTGCGACCAGCGCGGCCACCTACGTTAACATGACGGTCGGCTCCTT  
 CGTGTGTACCTCCTGCTCCGGCAGCCTGCGAGGATTAATCCACCACACAGGGTGAATCTATCTCCATG  
 ACAACATTCACACAACAGGAAATGAATCTTACAAAAACATGAAATGAAGTCTGTAACAGATTTGGC  
 TAGGATTATTTGATGATAGATCTTCAGCAATCCAGACTTCAGGGATCCACAAAAAGTAAAAGATTTCT  
 ACAAGAAAAGTATGAAAAGAAAAGATGGTATGTCCCGCCAGAACAAGCCAAAGTCGTGGCATCAGTTCAT  
 GCATCTATTTAGGGTCTCTGCCAGTAGCACAAGCAGCACACCTGAGGTCAAACACTGAAATCTCTTT  
 TAGGGGATTCTGCACCAACTGCACCTAAATAAGGGCACACCTAGTCAGTCCCCAGTTGTAGGTCGTTT  
 TCAAGGGCAGCAGCAGGAGAAGAAGCAATTTGACCTTTAAGTGATCTCGGCTCAGACATCTTTGCTGCT  
 CCAGCTCCTCAGTCAACAGCTACAGCCAATTTGCTAACTTTGCACATTTCAACAGTCATGCAGCTCAGA  
 ATTCTGCAAAATGCAGATTTTGCAAACTTTGATGCATTTGGACAGTCTAGTGGTTCGAGTAATTTGGAGG  
 TTTCCCCACAGCAAGTCACTCTCCTTTTCAGCCCCAACTACAGCATTTAGAATGCTTTTCACTAGCTGC  
 AGTTTTGGTGAATTTACTTCAGCTTTTCTCTTCAGGCTACCCACAGTGGAAAGTGTGCATCAGTAAATG  
 CTAATTTTGTCTATTTGATAACTTCCCAAACTCCTCCAGTGTGATTTTGGAACTTCAATACTTCCCA  
 GAGTCATCAAACAGCATCAGCTGTTAGTAAAGTTTCAACGAACAAAGCTGGTTTACAGACTGCAGACAAA  
 TATGCAGCACTTGCTAATTTAGACAATATCTTCAGTGCCGGCAAGGTGGTGTATCAGGGAAGTGGCTTTG  
 GGACCACAGGTAAGCTCCTGTTGGTTCTGTGGTTTTCAGTCCCAGTCAGTCAAGTCATCTTCAGACAA  
 GTATGCAGCTCTGGCAGAACTAGACAGCGTTTTTCAGTTCTGCAGCCACCTCCAGTAATGCGTATACTTCC  
 ACAAGTAAATGCTAGCAGCAATGTTTTTGGAACTGCCAGTGGTGTCTTGCACAGACACAGCCTGCTT  
 CATCAAGTGTGCCTGCTCCATTTGGAGCTACGCTTCCACAAATCCATTTGTTGCTGCTGCTGGTCTTTC  
 TGTGGCATCTTCTACAAACCCATTTAGACCAATGCCAGAGGAGCAACAGCGGCAACCTTTGGCACTGCA  
 TCCATGAGCATGCCACAGGATTCGGCACTCCTGCTCCCTACAGTCTTCCACCAGCTTTAGTGGCAGCT  
 TTCAGCAGCTGCCTTTCCAGCCAAAGCAGCTTCCCTCAACAGACAGCTTTTCTCAACAGCCCAATGG  
 TTTTGCAGCATTGGACAACAAAGCCAGTAGTAACCCCTTTTGGTCAAGTTCAGCTGCTGGAGTATCT  
 AGTAATCCTTTATGACTGGTGCACCAACAGGACAATTTCCAACAGGAAGCTCATCAACCAATCCTTTCT  
 TA

**ACGCGT**ACGCGGCCGCTCGAGCAGAACTCATCTCAGAAGAGGATCTGGCAGCAAATGATATCCTGGATT  
 ACAAGGATGACGACGATAAGGTTTAA

**Protein Sequence:**

>RC225983 representing NM\_001135187  
 Red=Cloning site Green=Tags(s)

MAASAKRKQEEKHLKMLRDMTGLPHNRKCFDCDQRGPTYVNMVGSFVCTSCSGSLRGLNPPHRVKSISM  
 TTFTQQEIEFLQKHGNEVCKQIWLGLFDDRSSAIPDFRDPQKVKEFLQEKYEKKRWYVPEQAKVVASVH  
 ASISGSSASSTSSTPEVKPLKSLGDSAPTLHLNKGTPSQSPVVGSRQGGQEKQFDLLSDLGSDIFAA  
 PAPQSTATANFANFAHFNSHAAQNSANADFANFDAGQSSGSSNFGGFPATASHSPFPQTAFRMLSSSC  
 SFGFTSAFPLQATHSGSAASVNFANFAHFDNFPKSSSADFNTSQSHQTASAVSKVSTNKAGLQTADK  
 YAALANLDNIFSAQGQGDQSGFGTTGKAPVGSVSVPSQSSASSDKYAALAE LDSVFSSAATSSNAYTS  
 TSNASSNVFGTVPVVASAQTQPASSVPAFPGATPSTNPFVAAAGPSVASSTNPFQTNARGATAATFGTA  
 SMSMPTGFGTPAPYSLPTSGSFGQPAFPAQAAPFQQTAFSSQPPNGFAAFGQTKPVVTPFGQVAAAGVS  
 SNPFMTGAPTGFPTGSSSTNPFL

**TR**TRPLEQKLISEEDLAANDILDYKDDDDKV

**Chromatograms:**

[https://cdn.origene.com/chromatograms/mk8068\\_d10.zip](https://cdn.origene.com/chromatograms/mk8068_d10.zip)

Restriction Sites: SgfI-MluI

Cloning Scheme:



ACCN: NM\_001135187

ORF Size: 1752 bp

OTI Disclaimer: The molecular sequence of this clone aligns with the gene accession number as a point of reference only. However, individual transcript sequences of the same gene can differ through naturally occurring variations (e.g. polymorphisms), each with its own valid existence. This clone is substantially in agreement with the reference, but a complete review of all prevailing variants is recommended prior to use. [More info](#)

OTI Annotation: This clone was engineered to express the complete ORF with an expression tag. Expression varies depending on the nature of the gene.

Components: The ORF clone is ion-exchange column purified and shipped in a 2D barcoded Matrix tube containing 10ug of transfection-ready, dried plasmid DNA (reconstitute with 100 ul of water).

- Reconstitution Method:
1. Centrifuge at 5,000xg for 5min.
  2. Carefully open the tube and add 100ul of sterile water to dissolve the DNA.
  3. Close the tube and incubate for 10 minutes at room temperature.
  4. Briefly vortex the tube and then do a quick spin (less than 5000xg) to concentrate the liquid at the bottom.
  5. Store the suspended plasmid at -20°C. The DNA is stable for at least one year from date of shipping when stored at -20°C.

RefSeq: [NM\\_001135187.2](#)

RefSeq ORF: 1755 bp

Locus ID: 3267

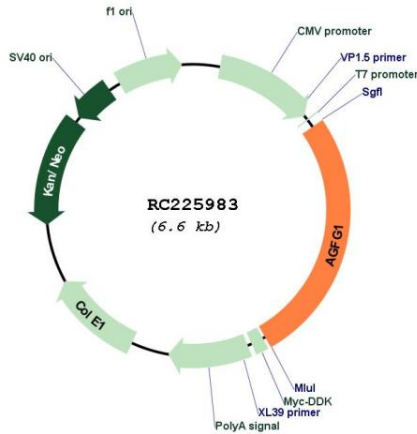
UniProt ID: [P52594](#)

**Cytogenetics:** 2q36.3

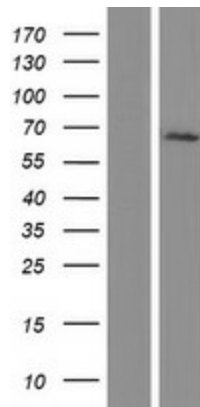
**MW:** 60.6 kDa

**Gene Summary:** The protein encoded by this gene is related to nucleoporins, a class of proteins that mediate nucleocytoplasmic transport. The encoded protein binds the activation domain of the human immunodeficiency virus Rev protein when Rev is assembled onto its RNA target, and is required for the nuclear export of Rev-directed RNAs. Multiple transcript variants encoding different isoforms have been found for this gene. [provided by RefSeq, Sep 2008]

**Product images:**



Circular map for RC225983



Western blot validation of overexpression lysate (Cat# [LY427581]) using anti-DDK antibody (Cat# [TA50011-100]). Left: Cell lysates from untransfected HEK293T cells; Right: Cell lysates from HEK293T cells transfected with RC225983 using transfection reagent MegaTran 2.0 (Cat# [TT210002]).