

Product datasheet for **RC225974**

ACSF3 (NM_001127214) Human Tagged ORF Clone

Product data:

Product Type:	Expression Plasmids
Product Name:	ACSF3 (NM_001127214) Human Tagged ORF Clone
Tag:	Myc-DDK
Symbol:	ACSF3
Mammalian Cell Selection:	Neomycin
Vector:	pCMV6-Entry (PS100001)
E. coli Selection:	Kanamycin (25 ug/mL)



[View online »](#)

ORF Nucleotide Sequence:

>RC225974 representing NM_001127214
 Red=Cloning site Blue=ORF Green=Tags(s)

TTTTGTAATACGACTCACTATAGGGCGGCCGGAATTCGTCGACTGGATCCGGTACCGAGGAGATCTGCC
 GCC**GCGATCGCC**

ATGCTGCCCCATGTGGTCTCACCTTCGGCGCCTGGGCTGCGCCTTGGCGTCTGCCGGCTGGCGCCTG
 CGAGACACAGAGGAAGTGGTCTTCTGCACACAGCCCAGTGGCCGCTCGGACAGGAGCGCCCCGGTGT
 CACCCGTGCCCTGGCCTTTGGGGACAGAATCGCCCTGGTTGACCAGCACGGCCGCCACAGTACAGGGAG
 CTTTATCCCGCAGCCTTCGCTGTCCCAGGAGATCTGCAGGCTCTGCGGGTGTGTGGCGGGGACCTCC
 GGGAGGAGAGGGTCTCCTTCTATGCGTAACGATGCCTCTACGTCGTGGCCAGTGGCGTATGGAT
 GAGTGGCGGTGTGGCAGTCCCCCTACAGGAAGCATCCCGCGGCCAGCTGGAGTATGCATCTGCGAC
 TCCCAGAGCTCTGTGCTTCCAGCCAGGAGTACCTGGAGCTCTGAGCCGGTGGTCAGGAAGCTGG
 GGGTCCCCTGCTGCCGCTCACACCAGCCATCTACACTGGAGCAGTAGAGGAACCGGCAGAGGTCCCCT
 CCCAGAGCAGGGATGGAGGAACAAGGGCGCCATGATCATCTACACCAGTGGGACCAGGGGAGGCCAAG
 GCGGTGCTGAGCAGCACCAAAACATCAGGGCTGTGGTACCAGGGCTGGTCCACAAGTGGCATGGACCA
 AAGACGACGTGATCCTCCACGTGCTCCCGCTGCACCACGTCCATGGTGTGGTCAACGCGCTGCTCTGTCC
 TCTCTGGGTGGGACCACTGTGTGATGATGCCTGAGTTCAGCCCTCAGCAGTTTGGGAAAAGTTCTTA
 AGTTCTGAAACGCCGCGGATCAATGTCTTTATGGCAGTGCCTACAATATACACCAAGCTGATGGAGTACT
 ACGACAGGCATTTTACCCAGCCGACGCCAGGATTTCTTGCCTGCAATTTGGAAGAAAAAATAGGCT
 GATGGTCTCAGGCTCAGTGCCTGCCCTCCCAGTGTGGAGAAGTGAAGAACATCACGGCCACACC
 CTGTGGAGCGGTATGGCATGACCGAGATCGGCATGGCTCTGTCCGGGCCCTGACCACTGCCGTGCC
 TGCCAGTTCCGTGGGGACCCACTGCCTGGAGTACAGGTGCGCATTGTCTCAGAAAACCCACAGAGGGA
 AGCTGTCTTACACCATCCACGCAGAGGGAGACGAGAGGGGGACCAAGGTGACCCAGGGTTTGAAGAA
 AAGGAGGGGAGCTGCTGGTGGGGACCTCCGTGTTTCGAGAATACTGGAATAAACCAGAAGAACTA
 AGAGTGCATTCACCTGGATGGCTGGTTAAGACAGGGGACACCGTGGTGTAAAGGATGGCCAGTACTG
 GATCCGAGGCCGACCTCAGTGGACATCATCAAGACTGGAGGCTACAAGGTGACGCGCCCTGGAGGTGGAG
 TGGCACCTGTGGCCACCCAGCATCACAGATGTGGCTGTGATTGGAGTCCGGATATGACATGGGGCC
 AGCGGGTCACTGTGTGGTACCCTCCGAGAAGGACACTACTGTCCACAGGGAGCTCAAAGATGGGC
 CAGAAATGCTCCTGGCCCCGTACGCGGTGCCCTCGGAGCTGGTGTGGTGGAGGAGATCCCGCGGAACCG
 ATGGGCAAGATTGACAAGAAGCGCTCATCAGGCACTTCCACCCCTCA

ACGCGTACGCGGCCGCTCGAGCAGAAACTCATCTCAGAAGAGGATCTGGCAGCAAATGATATCCTGGATT
 ACAAGGATGACGACGATAAGGTTTAA

Protein Sequence:

>RC225974 representing NM_001127214
 Red=Cloning site Green=Tags(s)

MLPHVVLTFRRLGCALASCRLAPARHRGSGLLHTAPVARSDRSAPVFRALAFGDRIALVDQHRHTYRE
 LYRSLRLSQEICRLCGCVGGDLREERVSFLCANDASYVVAQWASWMSGVAVPLYRKHPAAQLEYVICD
 SQSSVVLASQEYLELLSPVVRKLGVPLLPLTPAIYTGAVEEPAEVPVPEQGWNRKGAMIIYTSMTGRPK
 GVLSTHQNIRAVVTGLVHKWAWTKDDVILHVLPLHHVHGYYNALLCPLWVGATCVMPEFSPQQVWEKFL
 SSETPRINVMFVPTIYTKLMEYYDRHFTQPHAQDFLRVCEEKIRLMVSGSAALPLPVLEKWKNTGHT
 LLERYGMTEIGMALSGLPLTAVRLPGSVGTPLPGVQVRIVSENQREACSYTIIHAEGDERGKVTGPGFEE
 KEGELLVRGSPVVFREYWNKPEETKSAFTLDGWFKTGDVVFVFDGQYWRIRGRTSVDIIKTGGYKVSALVEV
 WHLLAHPSTIDVAVIGVPDMTWGQRVTAVVTLREGHSLSHRELKEARNVLAAPYAVPSELVLEVEIPRNG
 MGKIDKKALIRHFHPS

TRTRPLEQKLISEEDLAANDILDYKDDDDKV

Chromatograms:

https://cdn.origene.com/chromatograms/mk8100_c09.zip

Restriction Sites:

Sgfl-MluI

Cloning Scheme:


ACCN: NM_001127214

ORF Size: 1728 bp

OTI Disclaimer: The molecular sequence of this clone aligns with the gene accession number as a point of reference only. However, individual transcript sequences of the same gene can differ through naturally occurring variations (e.g. polymorphisms), each with its own valid existence. This clone is substantially in agreement with the reference, but a complete review of all prevailing variants is recommended prior to use. [More info](#)

OTI Annotation: This clone was engineered to express the complete ORF with an expression tag. Expression varies depending on the nature of the gene.

Components: The ORF clone is ion-exchange column purified and shipped in a 2D barcoded Matrix tube containing 10ug of transfection-ready, dried plasmid DNA (reconstitute with 100 ul of water).

- Reconstitution Method:**
1. Centrifuge at 5,000xg for 5min.
 2. Carefully open the tube and add 100ul of sterile water to dissolve the DNA.
 3. Close the tube and incubate for 10 minutes at room temperature.
 4. Briefly vortex the tube and then do a quick spin (less than 5000xg) to concentrate the liquid at the bottom.
 5. Store the suspended plasmid at -20°C. The DNA is stable for at least one year from date of shipping when stored at -20°C.

RefSeq: [NM_001127214.4](#)

RefSeq Size: 3495 bp

RefSeq ORF: 1731 bp

Locus ID: 197322

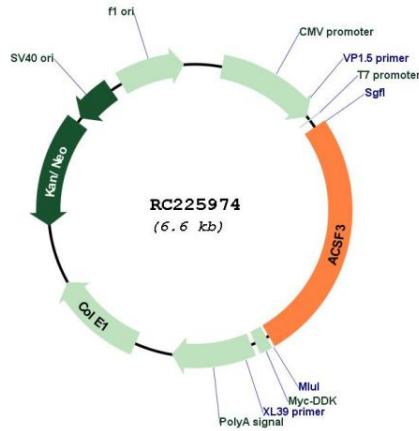
UniProt ID: [Q4G176](#)

Cytogenetics: 16q24.3

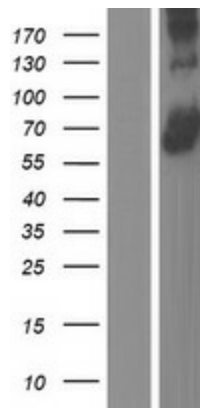
MW: 64.1 kDa

Gene Summary: This gene encodes a member of the acyl-CoA synthetase family of enzymes that activate fatty acids by catalyzing the formation of a thioester linkage between fatty acids and coenzyme A. The encoded protein is localized to mitochondria, has high specificity for malonate and methylmalonate and possesses malonyl-CoA synthetase activity. Mutations in this gene are a cause of combined malonic and methylmalonic aciduria. Alternatively spliced transcript variants have been observed for this gene. [provided by RefSeq, Sep 2013]

Product images:



Circular map for RC225974



Western blot validation of overexpression lysate (Cat# [LY426715]) using anti-DDK antibody (Cat# [TA50011-100]). Left: Cell lysates from untransfected HEK293T cells; Right: Cell lysates from HEK293T cells transfected with RC225974 using transfection reagent MegaTran 2.0 (Cat# [TT210002]).