

Product datasheet for **RC225973**

Epsin 1 (EPN1) (NM_001130072) Human Tagged ORF Clone

Product data:

Product Type:	Expression Plasmids
Product Name:	Epsin 1 (EPN1) (NM_001130072) Human Tagged ORF Clone
Tag:	Myc-DDK
Symbol:	Epsin 1
Mammalian Cell Selection:	Neomycin
Vector:	pCMV6-Entry (PS100001)
E. coli Selection:	Kanamycin (25 ug/mL)



[View online »](#)

ORF Nucleotide Sequence:

>RC225973 representing NM_001130072
 Red=Cloning site Blue=ORF Green=Tags(s)

TTTTGTAATACGACTCACTATAGGGCGGCCGGGAATTCGTCGACTGGATCCGGTACCGAGGAGATCTGCC
 GCC**CGGATCGCC**

ATGTCGACCTCGTCTTGAGGCGCCAGATGAAGAACATCGTCCAACTACTCAGAGCGGAGATCAAGG
 TTCGAGAGGCCACGAGCAATGACCCCTGGGGCCATCCAGCTCCCTCATGTGAGAGATTGCCGACCTCAC
 CTAACAACGTTGTGCGCTTCTCGGAGATCATGAGCATGATCTGGAAGCGGCTCAATGACCATGGCAAGAAC
 TGGCGTCACGTTTACAAGGCCATGACGCTGATGGAGTACCTCATCAAGACCGGCTCGGAGCGGTGTGCG
 AGCAGTGAAGGAGAACATGTACGCCGTGACAGCCTGAAGGACTTCCAGTACGTGGACCGGACGGCAA
 GGACCAGGGCGTGAACGTGCGTGAGAAAGCTAAGCAGCTGGTGGCCCTGCTGCGGACGAGGACCGGCTG
 CGGAAGAGCGGGCGCACGCGCTCAAGACCAAGGAAAAGCTGGCAGACCGCCACGCGCTCATCAGCAG
 CTGTGGGCTCAGGCCCTCCCGAGGCGGAGCAGGCGTGGCCGACAGCAGCGGGGAGGAGGAGCTGCA
 GCTCCAGCTGGCCCTGGCCATGAGCAAGGAGGAGCCGACCGCCCGTCTGCGGCCCGAGGACGAC
 GCCCAGCTCCAGCTGGCCCTTAGTTTGGCCGAGAAAGAGCATGATAAGGAGGAGCGGATCCGTCGCGGGG
 ATGACCTGCGGCTGCAGATGGCAATCGAGGAGAGCAAGAGGGAGACTGGGGGCAAGGAGGAGTCTCCCT
 CATGGACCTTGCTGACGCTTTCACGGCCCCAGCTCCTGCCCGACACAGACCCCTGGGGGGGCCAGCA
 CCCATGGCTGCTGCCGTCACGGCTGCCCCACCTCGGACCCCTGGGGCGGCCCTGTCCCTCCAG
 CTGCTGATCCCTGGGGAGGTCCAGCCCCACGCGGCTCTGGGGACCCCTGGAGGCTGCTGCCCTGC
 AGGACCCCTCAGTTGACCCCTGGGGTGGGACCCAGCCCTGCAGCTGGGGAGGGGCCACGCCTGATCCA
 TGGGAAGTTCCGATGGTGGGGTCCCGTCAGTGGGCCCTCAGCCTCCGATCCCTGGACACCGGCCCGG
 CCTTCTCAGATCCCTGGGGAGGGTCACTGCCAAGCCAGCAACCAATGGCACAACAGCAGCCGGGGATT
 CGACACGGAGCCGACGAGTTCTCTGACTTTGACCGACTCCGACAGGCACTGCCGACCTCCGGGAGCAGC
 GCAGGAGAGCTGGAGCTGCTGGCAGGAGAGGTGCCGCGCCGAAGCCCTGGGGCGTTTGACATGAGTGGG
 TCAGGGGATCTCTGGCTGAGGCTGTGGGACGCCCCACCTGCAGCCACACCAACTCCCACGCCCCCAC
 CCGGAAGACGCCGGAGTATTCTGGGGCCAATGCAGCCCTCGTCGACCTGGACTCGTGGTGAGCCGG
 CCGGGCCCCACGCCGCTGGAGCCAAGGCTCCAACCCCTTCTGCCAGGCGGAGGCCACGCACTGGCC
 CTTCCGTCACCAACCCCTCCAGCCCGCCTCCCGGACGCTCACCTGAACCAGCTCCGTCTCAGTCC
 TGTGCTCCCGTCCCTGGAGCGCCACCCAGTACATCTCTCCCTTGGCGGGGCCCTGGCTGCCCC
 ATGATGCCCGGGCCCCCGGCCCAACACTAATCCCTTCTCCTA

ACGCGTACGCGGCCGCTCGAGCAGAAACTCATCTCAGAAGAGGATCTGGCAGCAAATGATATCCTGGATT
 ACAAGGATGACGACGATAAGGTTAA

Protein Sequence:

>RC225973 representing NM_001130072
 Red=Cloning site Green=Tags(s)

MSTSSLRRQMKNI VHNYSAEIKVREATSNDPWGPSSSLMSEIADLTYNVVFSEIMSMIWKRLNDHGKN
 WRHVYKAMTLM EYL IKTGSERVSQQCKENMYAVQTLKDFQYVDRDQKQGVNVREKAKQLVALLRDEDRL
 REERAHALKTKEKLAQTATASSA AVSGPPPEAEQAWPQSSGEEELQLQLALAMSKEEADQPPSCGPEDD
 AQLQLALSLSREEHDKEERIRRGDDLRLQMAIEESKRETGGKEESSLMDLADVFTAPAPAPTTDPWGGPA
 PMAAAVPTAAPTSDPWGGPPVPPAADPWGGPAPTASGDPWRPAPAGPSVDPWGGTPAPAAGEGPTDP
 WGSDDGGVPVSGPSASDPWTPAPAFSDPWGGSPAKPSTNGTTAAGGFDEPDEFSDFDRLRTALPTSGSS
 AGELELLAGEVPARSPGAFDMSGVVRGSLAEAVGSPPPAATPTPTPPTKTPESFLGNAAALVDLDSL VSR
 PGPTPPGAKASNPFLPGGGPATGPSVTNPFQPAPPATLTLNLRLSPVPPVPGAPPTYISPLGGGGLP
 MMPPGPPAPNTNPFLL

TRTRPLEQKLISEEDLAANDILDYKDDDDKV

Chromatograms:

https://cdn.origene.com/chromatograms/mk8068_b01.zip

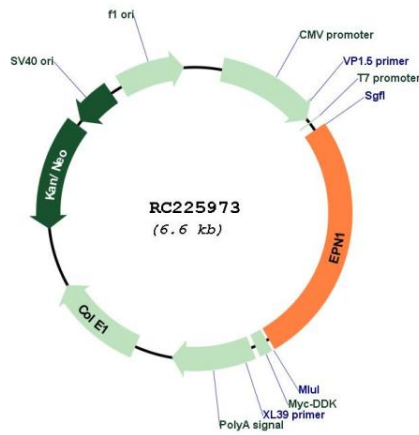
Restriction Sites:

SgfI-MluI

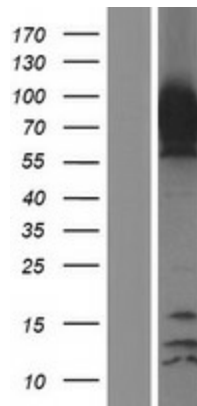
MW: 60.1 kDa

Gene Summary: This gene encodes a member of the epsin protein family. The encoded protein binds clathrin and is involved in the endocytosis of clathrin-coated vesicles. Loss of function of this gene is associated with reduced tumor growth and progression in certain cancer types. [provided by RefSeq, Mar 2016]

Product images:



Circular map for RC225973



Western blot validation of overexpression lysate (Cat# [LY427146]) using anti-DDK antibody (Cat# [TA50011-100]). Left: Cell lysates from untransfected HEK293T cells; Right: Cell lysates from HEK293T cells transfected with RC225973 using transfection reagent MegaTran 2.0 (Cat# [TT210002]).