

## Product datasheet for **RC225968**

### **ABLIM2 (NM\_001130085) Human Tagged ORF Clone**

#### **Product data:**

Product Type:	Expression Plasmids
Product Name:	ABLIM2 (NM_001130085) Human Tagged ORF Clone
Tag:	Myc-DDK
Symbol:	ABLIM2
Mammalian Cell Selection:	Neomycin
Vector:	pCMV6-Entry (PS100001)
E. coli Selection:	Kanamycin (25 ug/mL)



[View online »](#)

**ORF Nucleotide Sequence:**

>RC225968 representing NM\_001130085  
 Red=Cloning site Blue=ORF Green=Tags(s)

TTTTGTAATACGACTCACTATAGGGCGGCCGGAATTCGTCGACTGGATCCGGTACCGAGGAGATCTGCC  
 GCC**CGGATCGCC**

ATGAGTGCAGTGTGCGAGCCCCAGGCTGCTCCAGCCCGTGGAGAAGTCGCCAGCACGGCGATCCTGT  
 GCAACACGTGTGGGAATGTGTGCAAGGGCGAGGTGCTGCGGGTGCAGGACAAGTACTTCCACATCAAGTG  
 CTTCTGTGTAAGCATGTGGCTGCGACCTGGCCGAGGGCGGCTTCTTCGTGCGGCAGGGCGAGTACATC  
 TGCACGCTGGACTACCAGAGGCTCTACGGCACCCGCTGCTTCAGCTGCGACCAGTTCATTGAGGGTGAAG  
 TGGTGTGCGGCGTGGCAAGACCTACCACCCGACTGCTTCGTGTGTGCCGTCTGCCGGTGCCTTCCC  
 CCCCAGGGACCGAGTGACCTTCAACGGGAAGGAATGCATGTGCCAGAAGTGTTCCTGCCGTATCGGTG  
 GGCAGCAGCGCACCTGTCCAGGGCCTCCGAAGTTGTGGGGTGTGCCGACAGAAATCAAGAATGCC  
 AGGCCCTGGTAGCCTTGGACAAGCACTGGCACTGGGCTGTTTTAAGTCAAGAGCTGTGGGAAGCTCCT  
 GAATGCCGAGTACATCAGCAAGGATGGGCTGCCCTACTCGAAGCTGACTATCACCCAAGTTCCGCATC  
 CGCTGTGACAGCTGTGAGAAATACATCACGGGGCGGCTGTGGAGCCGGAGAGAAGCACTACCACCTT  
 CCTGCGCGCTATGTGTCAGGTGCGGCCAGATGTTTGCAGAAGGCCAAGAGATGTATCTTCAAGTTCCCTC  
 CATCTGGCATCCGGCGTGTGACAAGCAGCCAGAAGTGAAGACAGAAACAAGGAAACCAGAACTTCTCTCA  
 GAGAGCATCATTCTGTCCCTGCTTCCAGCACCTCAGGGTCTCCGAGCCGTGTGATTTATGCCAAGCTTG  
 GTGGTGAAGTCTGGACTACAGGGACTTGGCAGCCCTTCTAAAAGTAAAGCCATCTATGACATCGACCCG  
 CCCCAGCATGATCTCTACTCACCTACATCAGCCACTCTGCAGGGGACAGGCAGAGCTACGGCGAGGGG  
 GATCAGGATGACCGTCTCAAGCAGTGTGCGACCTCCAGCCCAAGCTCCACTGGTTCGGTTAGCCTCG  
 GCGCTACACTCCGACCTCACGGTCCACACAGCACTACAGCCGTCAGGCAGTGAAGTGGCCGGAGCACC  
 CCCCAGCCTCTCCGTGCTCTCTGACAGCAAGCCGCCCTCCACCTACCAGCAGGCACCTCGCCACTTCC  
 CACGTCCAGACTGGCGTAAAAGATAACATCTATAGGAAACCCCTATCTACAGACAGCATGCTGCCA  
 GGCGATCGGATGGGGAGGATGGAAGCTTGGACCAGGATAACAGGAAGAAGAGCAGCTGGCTGATGCTCAA  
 GGGGGATGCAGACACAAGGACCAATTCTCCAGACCTGGACACCCAGTCTTGTCCACAGCAGCGGGACC  
 GACAGAGACCCTTCCAAAGGATGGCAGGGGACAGCTTCTACTACAATAACAAGTCTATCCGTATGACT  
 CCCTCATCGTACAAACCGAATTCGCGTAAAAGTGCCTAACAGACGTTGGACCGGACGAGACTGGAGAGACA  
 CTTGTGCGCCGAGGAGTCCAGGAAGTGTGGGATGAGCATCGAGGAGTTTGACCGCTGGCCCTCTGG  
 AAGAGGAATGACCTTAAGAAGAAAGCCCTTTTGTTC

**ACGCGT**ACGCGGGCCGCTCGAGCAGAAACTCATCTCAGAAGAGGATCTGGCAGCAAATGATATCCTGGATT  
 ACAAGGATGACGACGATAAGGTTTAA

**Protein Sequence:**

>RC225968 representing NM\_001130085  
 Red=Cloning site Green=Tags(s)

MSAVSQQAAPSPLEKSPSTAILCNTCGNVCKGEVLRVQDKYFHIKCFVCKACGCDLAEGGFFVRQGEYI  
 CTLDYQRLYGTRCFSCDQFIEGEVVSALGKTYHPDCFVCAVCRLPFPFGDRVTFNGKECMCQKCSLPVSV  
 GSSAHLSQLRSCGGCGTEIKNGQALVALDKHWHLGCFKCKSCGKLLNAEYISKDGLPYCEADYHAKFGI  
 RCDSCKEYITGRVLEAGEKHYHPSCALCVRCQMFAEGEEMYLQGSIIWHPACRQAARTEDRNKETRSTSS  
 ESIIISVPASSTSGSPSRVIYAKLGGIILDYRDLAALPKSKAIYDIDRPDMISYSPYISHSAGDRQSYGEG  
 DQDDRSYKQCRSTSSPSSTGSVSLGRYTPTRSPPQHYSRPGSESGRSTPSLSVLSKPPSTYQQAPRHF  
 HVPDTGVKDNIYRKPIYRQHAARRSDGEDGSLDQDNRKSSWMLKGDADTRTNSPDLDTQSLSHSSGT  
 DRDPLQRMAGDSFHSQYKIYPYDSLIVTNRIRVKLPKDVDRTLRERHLSPEEFQEVFGMSIEEFDRLALW  
 KRNDLKKKALLF

**TR**TRPLEQKLISEEDLAANDILDYKDDDDKV

**Chromatograms:**

[https://cdn.origene.com/chromatograms/mk8067\\_h07.zip](https://cdn.origene.com/chromatograms/mk8067_h07.zip)

**Restriction Sites:**

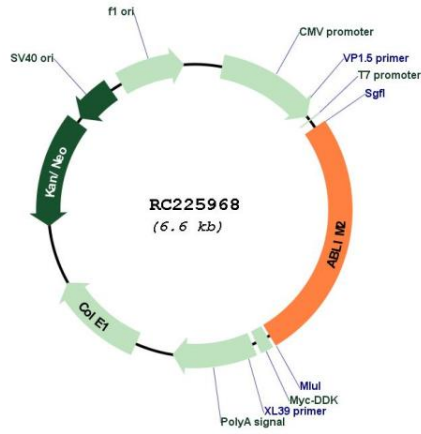
Sgfl-Mlul



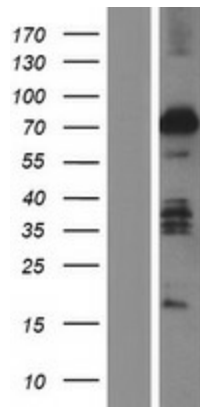
**MW:** 63.5 kDa

**Gene Summary:** May act as scaffold protein. May stimulate ABRA activity and ABRA-dependent SRF transcriptional activity.[UniProtKB/Swiss-Prot Function]

**Product images:**



Circular map for RC225968



Western blot validation of overexpression lysate (Cat# [LY427153]) using anti-DDK antibody (Cat# [TA50011-100]). Left: Cell lysates from untransfected HEK293T cells; Right: Cell lysates from HEK293T cells transfected with RC225968 using transfection reagent MegaTran 2.0 (Cat# [TT210002]).