

Product datasheet for **RC225966**

TTC22 (NM_001114108) Human Tagged ORF Clone

Product data:

| | |
|---------------------------|---|
| Product Type: | Expression Plasmids |
| Product Name: | TTC22 (NM_001114108) Human Tagged ORF Clone |
| Tag: | Myc-DDK |
| Symbol: | TTC22 |
| Mammalian Cell Selection: | Neomycin |
| Vector: | pCMV6-Entry (PS100001) |
| E. coli Selection: | Kanamycin (25 ug/mL) |



[View online »](#)

ORF Nucleotide Sequence:

>RC225966 representing NM_001114108
 Red=Cloning site Blue=ORF Green=Tags(s)

TTTTGTAATACGACTCACTATAGGGCGGCCGGAATTCGTCGACTGGATCCGGTACCGAGGAGATCTGCC
 GCC**CGCATCGCC**

ATGGCGGAGCTGGAGGCTGTGGCCGACGATCTAGACGCCCTCATCGACGACCTGGACTACCTCCCGGGCC
 ACTTTCACCTGGAGATGCAGTTGAACTTCGAGCCGCGCTCGCCGGCCCCACAGCGCGCCCGGACCTGAA
 GCTGCAGCGGGAGGCTCTGCGGCAGGAGCTCCAGCTGGCGGCCGCCCGCAGCGCCCGCTGTGCGTCA
 CTCCTGGGCGCTTTCGATTCTACCTGGAGGAGCTGGACGAGGCCCGGAGTGCTTCTCGAGGTGGCC
 ACGAGCACCCGGCAACCTCAATGCCTGGGCCAATCTGGCACACGTGTACGGGCGGCTGGCCAGGAAGA
 AGAGGAGGAGGCGTGCGCCGACGGCTGGCCGACCTCATGGCCCTGGCAGAGGAGCCGAGGCGCCGGG
 GACCCCGAGTCCGCGCCGCTCGCTGCCTGGCCGAGCAGGGCTACGCGCATGGCTTCGACGTCGGCTGCG
 CCAGCCCAGAGGAGCGTGCGCCGGGGCTGGCGGCAGGCATCGCGCTCTACGACAAGGCGCTAGGCTACGG
 GCAGCAGATCCCAGTGGAGGAGAAAAGGGGCTGGTATTTACCATGGCAACTCTACATCAGGCTAGAT
 GGCATCTTCTGGAGCTGGGCAGTGAGGAGCAGAAGAGACTGCCTGCCTCAACCGCACGCTGGCCCTAC
 TCCGGCAAGTGCTGAAGTCCGAGGACCCCGCCACCGAGCCCTGGCTGGTGCTACCTCGGGATGCTGCT
 GGAGCGGAAGGACACCTTCTCCACCACCCCATGGGCGTCCATGACTGCGGGTACTCAGGGACCGACCT
 CTAGACTGCTTCGGCAAGGCCATTGAGATTGCCAAGAACAACCTCCCATCTGAATCGCCTGGCAAAAA
 TCTTCTACTTCTGGGAAAGCAGGATATGGCCATTGGAACCTGCAACATGGCCCTGGATGTCCTACGAGA
 TCCAGAGCTCACTGGCAGGCGTACTGCACAAGGGCAAGATCCACATCAGAGCCTACCTGCATGACCTC
 AAGCGGGCAAGATGGGTCTCGGGGCAATGCCTGACAGGAACACCTGGCCTGTGCCAAGGCTGACCTTG
 AGGAAGTGGTCAGGGTGTGCCAGGCTCAAGGCGTACCTGGACATCGCCAGGTCTACTACTATATGGG
 CGTGACGCGGTGCAGGAGCTGCTGGCGGTGGACGAGGCGCGCTGAACCGAGCGCTGGTGTTCTGGCC
 AAGCGGGCGAGTCCGAGCTGGGTGCCACGCTGCCCGAGCTGCAGCTGCTGCGCGCAAGTGCCTGCGCA
 TCAAGGGCGAGGACGCCAACCGCGCCGCTGCTTCAAGCGCGCAGTGGAGCTGGACGACGCGGGCTCCAG
 CCACACCGACGGCTTCGGCTGCCTGCTCGAGGCGCTGCTGGCGCAGTGGAGCCAGGCACAGCTGAGCGAC
 GGGGAGCTGGCCCGGAGGTGGACGCTGGCTGCGCCGCGCCAGGACAAGTACCCCGGGCGCGCTGCG
 GCCAGGAGCTGCAGCGCTGTGGCGGGCACACGGACGAGGTGTTGGGGCTGGCCCGGGCCCTGGTGGC
 CCAGGGACGCGCGCTGGTGGCGCTGCTCTTCGAGACCATGGAGCGCAGGGCGAGGGCGCCAGCGCG
 CCGCGGGACCGCGGGTGTCTCATT

ACGCGTACGCGGGCCGCTCGAGCAGAACTCATCTCAGAAGAGGATCTGGCAGCAAATGATATCCTGGATT
 ACAAGGATGACGACGATAAGGTTTAA

Protein Sequence:

>RC225966 representing NM_001114108
 Red=Cloning site Green=Tags(s)

MAELEAVADDLDALIDDLDYLPGHFHEMQLNFEPRSPAPQRARDLKLQREGLRQELQLAAPQRPVAVRH
 LLGAFAYLEELDEARECFLEVAHEHPGNLNAWANLAHVYGRLGQEEEEACAARLADLMGLAEPEEAAG
 DPQLRAARCLAEQYAHGFDVGCASPEERARGLAAGIALYDKALGYGQIPMEEKRGWYFTMATLYIRLD
 GIFLELGSEEQKRLPAFNRTLALLRQVLKSEDPHRALAWCYLGMLLERKDTFSTTPMGVHDCGYSGTDP
 LDCFGKAIEIAKNQPPIINRLAKIFYFLGKQDMAIGTCNMALDVLDPENLWQAYCTRAKIHIRAYLHDL
 KRAKMLGGMPDRNHLACAKADLEEVRVCPGFKAYLDIGQVYYMVGVDVAVQELLAVDEAALNVALVFLA
 KAGESELGATLPELQLLRGKCLRIKGEDANAAACFKRAVELDDAGSSHTDGFGLLEALLAQWSQAQLSD
 GELGREVDWLRRRAQDKYPAARLRQELQRVWRGHTDEVLGLARALVAQGRPALVRLLFETMEREGEGASA
 PRDRRAVSF

TRTRPLEQKLISEEDLAANDILDYKDDDDKV

Chromatograms:

https://cdn.origene.com/chromatograms/mk8034_c06.zip

Restriction Sites:

SgfI-MluI

Cloning Scheme:


ACCN: NM_001114108

ORF Size: 1707 bp

OTI Disclaimer: The molecular sequence of this clone aligns with the gene accession number as a point of reference only. However, individual transcript sequences of the same gene can differ through naturally occurring variations (e.g. polymorphisms), each with its own valid existence. This clone is substantially in agreement with the reference, but a complete review of all prevailing variants is recommended prior to use. [More info](#)

OTI Annotation: This clone was engineered to express the complete ORF with an expression tag. Expression varies depending on the nature of the gene.

Components: The ORF clone is ion-exchange column purified and shipped in a 2D barcoded Matrix tube containing 10ug of transfection-ready, dried plasmid DNA (reconstitute with 100 ul of water).

- Reconstitution Method:**
1. Centrifuge at 5,000xg for 5min.
 2. Carefully open the tube and add 100ul of sterile water to dissolve the DNA.
 3. Close the tube and incubate for 10 minutes at room temperature.
 4. Briefly vortex the tube and then do a quick spin (less than 5000xg) to concentrate the liquid at the bottom.
 5. Store the suspended plasmid at -20°C. The DNA is stable for at least one year from date of shipping when stored at -20°C.

RefSeq: [NM_001114108.1](#), [NP_001107580.1](#)

RefSeq ORF: 1710 bp

Locus ID: 55001

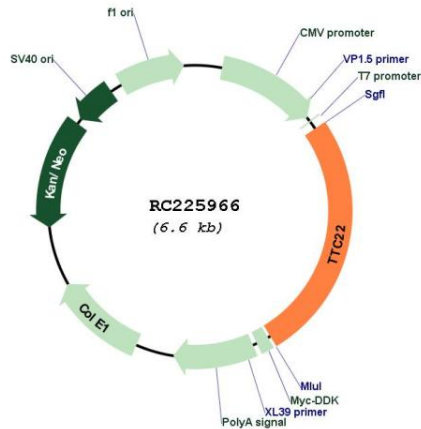
UniProt ID: [Q5TAA0](#)

Cytogenetics: 1p32.3

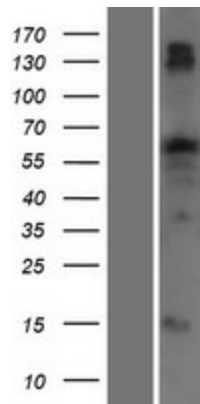
MW: 63.2 kDa

Gene Summary:

This gene encodes a protein with seven tetratricopeptide (TPR) repeats. Tetratricopeptide repeat containing motifs are found in a variety of proteins and may mediate protein-protein interactions and chaperone activity. Alternatively spliced transcript variants have been found for this gene. [provided by RefSeq, Jun 2011]

Product images:


Circular map for RC225966



Western blot validation of overexpression lysate (Cat# [LY426454]) using anti-DDK antibody (Cat# [TA50011-100]). Left: Cell lysates from untransfected HEK293T cells; Right: Cell lysates from HEK293T cells transfected with RC225966 using transfection reagent MegaTran 2.0 (Cat# [TT210002]).