

## Product datasheet for **RC225961**

### NT5C2 (NM\_001134373) Human Tagged ORF Clone

#### Product data:

Product Type:	Expression Plasmids
Product Name:	NT5C2 (NM_001134373) Human Tagged ORF Clone
Tag:	Myc-DDK
Symbol:	NT5C2
Synonyms:	cN-II; GMP; NT5B; PNT5; SPG45; SPG65
Mammalian Cell Selection:	Neomycin
Vector:	pCMV6-Entry (PS100001)
E. coli Selection:	Kanamycin (25 ug/mL)



[View online »](#)

**ORF Nucleotide Sequence:**

>RC225961 ORF sequence  
 Red=Cloning site Blue=ORF Green=Tags(s)

TTTTGTAATACGACTCACTATAGGGCGGCCGGGAATTCGTCGACTGGATCCGGTACCGAGGAGATCTGCC  
 GCC**CGGATCGCC**

ATGTCAACCTCCTGGAGTATCGGTTACAGAATGCAGCAGATATGCCTGCTAACATGGATAAGCATGCC  
 TAAAAAGTATCGTCGAGAAGCCTATCATCGGGTGTGTTGTGAACCGAAGTTAGCAATGGAAAAGATAAA  
 GTGTTTTGGTTTTGATATGGATTATACCCTTGCTGTGTACAAGTCCCAGAGTATGAGTCCCTTGTTTT  
 GAGCTTACTGTGGAGAGATTAGTTTCTATTGGCTATCCCCAGGAGTTGCTCAGCTTTGCTTATGATTCTA  
 CATTCCCTACCAGGGGACTTGTCTTTGACACACTGTATGGAAATCTTTTAAAAGTCGATGCCTATGGAAA  
 CCTCTTGGTCTGTGCACATGGATTTAACTTTATAAGGGGACCAGAACTAGAGAACAGTATCCAAATAAA  
 TTTATCCAGCGAGATGATACTGAAAGATTTTACATTCTGAACACACTATTCAACCTACCAGAGACCTACC  
 TGTTGGCCTGCCTAGTAGATTTTTTACTAATTGTCCAGATATACCAGTTGTGAAACAGGATTTAAGA  
 TGGGGACCTCTCATGTCTACCGGAGTATGTTCCAGGATGTAAGAGATGCTGTTGACTGGGTTCCATTAC  
 AAGGGCTCCCTTAAGGAAAAGACAGTTGAAAATCTTGAGAAGTATGTAGTCAAAGATGGAAAACCTGCCTT  
 TGCTTCTGAGCCGGATGAAGGAAGTAGGGAAAAGTATTTCTTGCTACCAACAGTACTATAAATATACAGA  
 TAAAAATTGACTTACCTGTTTGACTTCCCACATGGCCCCAAGCCTGGGAGCTCCCATCGACCATGGCAG  
 TCCTACTTTGACTTGATCTTGGTGGATGCACGGAAACCACTCTTTTTGGAGAAGGCACAGTACTGCGTC  
 AGGTGGATACTAAAACCTGGCAAGCTGAAAATTTGGTACCTACACAGGGCCCTACAGCATGGTATCGTCTA  
 CTCAGGAGTTCTTCTGATACGATCTGTGACCTGTTGGGAGCCAAGGGAAAAGACATTTTGTATATTGGA  
 GATCACATTTTTGGGGACATTTTAAAATCAAAGAAACGGCAAGGGTGGCGAACTTTTTGGTGATTCCTG  
 AACTCGCACAGGAGCTACATGTCTGGACTGACAAGAGTTCACTTTTGAAGAACTTCAGAGCTTGGATAT  
 TTTCTTGCTGAACTCTACAAGCATCTTGACAGCAGTAGCAATGAGCGTCCAGACATCAGTCCATCCAG  
 AGACGTATTAAGAAAGTAACTCATGACATGGACATGTGCTATGGGATGATGGGAAGCCTGTTTCGACGTG  
 GCTCCCGGCAGACCCTTTTTGCCAGTCAAGTGTGCGTTATGCTGACCTCTATGCAGCATCTTTCATCAA  
 CCTGCTGTATTACCCTTTCAGCTACCTCTTCAGGGCTGCCATGTCTTGATGCCTCATGAATCAACGGTG  
 GAGCACACACACGTAGATATCAATGAGATGGAGTCTCCTCTTGCCACCCGGAACCGCACATCAGTGGATT  
 TCAAAGACTGACTACAAGCGCACAGCTGACACGGTCAATTAGTGAGATTAACCTCCCAACCTCTT  
 CCCACTGGCCCCCAGGAAATTACACACTGCCATGACGAAGATGATGATGAAGAGGAGGAGGAGGAGGAA  
 GAA

**ACGCGT**ACGCGGCCGCTCGAGCAGAAACTCATCTCAGAAGAGGATCTGGCAGCAAATGATATCCTGGATT  
 ACAAGGATGACGACGATAAGGTTTAA

**Protein Sequence:**

>RC225961 protein sequence  
 Red=Cloning site Green=Tags(s)

MSTSWSDRLQNAADMPANMDKHALKKYRREAYHRVFNRLAMEKIKCFGDMDYTLAVYKSPEYESLGF  
 ELTVERLVSIGYPQELLSFAYDSTFPTRGLVFDLTYGNLLKVDAYGNLLVCAHGFNFIRGPETREQYPNK  
 FIQRDDTERFYILNLFNLPETYLLACLVDFFTNCPRYTSCETGFKDGLFMSYRSMFQDVRDAVDVWHY  
 KGSLKEKTVENLEKYVVKDGKPLLLSRMKEVGKVFLATNSDYKYTDKIMTYLFDLPHGPKPGSSHRPWQ  
 SYFDLILVDARKPLFFGEGTVLRQVDTKGKLIKIGTYTGPLQHGIVYSGGSDTICDLLGAKGKDILYIG  
 DHIFGDILKSKRQGWRTFLVIPELAQELHVWTDKSSLEELQSLDIFLAELYKHLDSSNERPDISSIQ  
 RRIKKVTHDMDMCMYGMGSLFRSGSRQTLFASQVMRYADLYAASFINLLYYPFSYLFRAAHVLMPEHSTV  
 EHTHVDINEMESPLATRNRTSVDFKDTDYKRHQLTRISIEIKPPNLFPLAPQEITHCHDEDDDEEEEEEE  
 E

**TR**TRPLEQKLISEEDLAANDILDYKDDDDKV

**Chromatograms:**

[https://cdn.origene.com/chromatograms/mk6082\\_c08.zip](https://cdn.origene.com/chromatograms/mk6082_c08.zip)

**Restriction Sites:**

Sgfl-Mlul

**Cloning Scheme:**


**ACCN:** NM\_001134373

**ORF Size:** 1686 bp

**OTI Disclaimer:** The molecular sequence of this clone aligns with the gene accession number as a point of reference only. However, individual transcript sequences of the same gene can differ through naturally occurring variations (e.g. polymorphisms), each with its own valid existence. This clone is substantially in agreement with the reference, but a complete review of all prevailing variants is recommended prior to use. [More info](#)

**OTI Annotation:** This clone was engineered to express the complete ORF with an expression tag. Expression varies depending on the nature of the gene.

**Components:** The ORF clone is ion-exchange column purified and shipped in a 2D barcoded Matrix tube containing 10ug of transfection-ready, dried plasmid DNA (reconstitute with 100 ul of water).

- Reconstitution Method:**
1. Centrifuge at 5,000xg for 5min.
  2. Carefully open the tube and add 100ul of sterile water to dissolve the DNA.
  3. Close the tube and incubate for 10 minutes at room temperature.
  4. Briefly vortex the tube and then do a quick spin (less than 5000xg) to concentrate the liquid at the bottom.
  5. Store the suspended plasmid at -20°C. The DNA is stable for at least one year from date of shipping when stored at -20°C.

**RefSeq:** [NM\\_001134373.3](#)

**RefSeq Size:** 3453 bp

**RefSeq ORF:** 1686 bp

**Locus ID:** 22978

**UniProt ID:** [P49902](#)

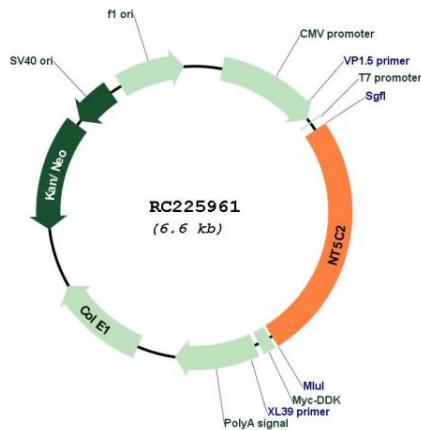
**Cytogenetics:** 10q24.32-q24.33

**Protein Pathways:** Metabolic pathways, Nicotinate and nicotinamide metabolism, Purine metabolism, Pyrimidine metabolism

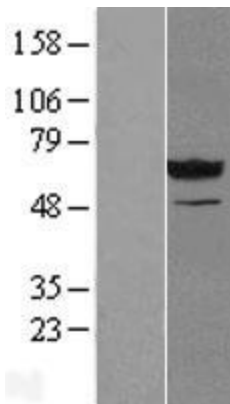
**MW:** 65 kDa

**Gene Summary:** This gene encodes a hydrolase that serves as an important role in cellular purine metabolism by acting primarily on inosine 5'-monophosphate and other purine nucleotides. [provided by RefSeq, Oct 2011]

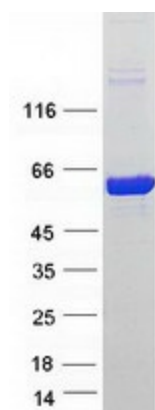
**Product images:**



Circular map for RC225961



Western blot validation of overexpression lysate (Cat# [LY427403]) using anti-DDK antibody (Cat# [TA50011-100]). Left: Cell lysates from untransfected HEK293T cells; Right: Cell lysates from HEK293T cells transfected with RC225961 using transfection reagent MegaTran 2.0 (Cat# [TT210002]).



Coomassie blue staining of purified NT5C2 protein (Cat# [TP325961]). The protein was produced from HEK293T cells transfected with NT5C2 cDNA clone (Cat# RC225961) using MegaTran 2.0 (Cat# [TT210002]).