

## Product datasheet for **RC225958**

### **ABLIM2 (NM\_001130086) Human Tagged ORF Clone**

#### **Product data:**

Product Type:	Expression Plasmids
Product Name:	ABLIM2 (NM_001130086) Human Tagged ORF Clone
Tag:	Myc-DDK
Symbol:	ABLIM2
Mammalian Cell Selection:	Neomycin
Vector:	pCMV6-Entry (PS100001)
E. coli Selection:	Kanamycin (25 ug/mL)



[View online »](#)

**ORF Nucleotide Sequence:**

>RC225958 representing NM\_001130086  
 Red=Cloning site Blue=ORF Green=Tags(s)

TTTTGTAATACGACTCACTATAGGGCGGCCGGAATTCGTCGACTGGATCCGGTACCGAGGAGATCTGCC  
 GCC**CGCATCGCC**

ATGAGTGCAGTGTGCGAGCCCCAGGCTGCTCCCAGCCCGTGGAGAAGTCGCCAGCACGGCGATCCTGT  
 GCAACACGTGTGGGAATGTGTGCAAGGGCGAGGTGCTGCGGGTGCAGGACAAGTACTTCCACATCAAGTG  
 CTTCTGTGTAAGCATGTGGCTGCGACCTGGCCGAGGGCGGCTTCTTCGTGCGGAGGGCGAGTACATC  
 TGCACGCTGGACTACCAGAGGCTCTACGGCACCCGCTGCTTCAGCTGCGACCAGTTCATTGAGGGTGAGG  
 TGGTGTGCGGCGTGGCAAGACCTACCACCCGACTGCTTCGTGTGTGCCGTCTGCCGGTCCCTTCCC  
 CCCCAGGGACCGAGTGACCTTCAACGGGAAGGAATGCATGTGCCAGAAGTGTCCCTGCCGTATCGGTG  
 GGCAGCAGCGCACCTGTCCCAGGGCCTCCGAAGTTGTGGGGTGCAGCACAGAAATCAAGAATGGCC  
 AGGCCCTGGTAGCCTTGACAAGCACTGGCACTGGGCTGTTTTAAGTCAAGAGCTGTGGGAAGCTCCT  
 GAATGCCGAGTACATCAGCAAGGATGGGCTGCCCTACTCGAAGCTGACTATCACGCCAAGTTCGGCATC  
 CGCTGTGACAGCTGTGAGAAATACATCACGGGGCGCTGCTGGAGCCGGAGAGAAGCACTACCACCTT  
 CCTGCGCGCTATGTGTCAGGTGCGGCCAGATGTTTGCAGAAGGCCAAGAGATGTATCTTCAAGTTCCCTC  
 CATCTGGCATCCGGCGTGTGACAAGCAGCCAGAAGTGAAGACAGAAACAAGGAAACCAGAACTTCCCTCA  
 GAGAGCATCATTCTGTCCCTGCTTCCAGCACCTCAGGGTCTCCGAGCCGTGTGATTTATGCCAAGCTTG  
 GTGGTGTGAGTCTGGACTACAGGGACTTGGCAGCCCTTCTAAAAGTAAAGCCATCTATGACATCGACCC  
 CCCCAGATGATCTCTACTCACCTACATCAGCCACTTGCAGGGGACAGGCAGAGCTACGGCGAGGGG  
 GATCAGGATGACCGTCTACAAGCAGTGTGACCTCCAGCCAAAGCTCCACTGGTTCGGTTAGCCTCG  
 GCGCTACACTCCGACCTCACGGTACCCACAGCACTACAGCCGTCAGCTGCCAGGCGATCGGATGGGG  
 GGATGGAAGCTTGGACCAGGATAACAGGAAGAAGAGCAGCTGGCTGATGCTCAAGGGGGATGCAGACACA  
 AGGACCAATTCTCCAGACCTGGACACCCAGTCTTGTCCACAGCAGCGGACCGACAGAGACCTCTCC  
 AAAGGATGGCAGGGGACAGCTTTCACCTACGATCCCTATTCCAAATCTGACCTCTCCCAGGACATGG  
 AAAGAATGGCTTGGACCAGCGGAATGCCAATCTGGCCCCCTGTGGAGCAGACCCGGATGCCAGCTGGGGC  
 ATGCGAGAATAACAAGATCTATCCGTATGACTCCCTCATCGTCACAAACCGAATTCGCGTGAAGTCCCA  
 AAGACGTGGACCGGACGAGACTGGAGAGCACTTGTGCCCGAGGAGTCCAGGAAGTGTGGGATGAG  
 CATCGAGGAGTTGACCGCTGGCCCTCTGGAAGAGGAATGACCTTAAGAAGAAAGCCCTTTTGTTC

**ACGCGT**ACGCGGCGCTCGAGCAGAAACTCATCTCAGAAGAGGATCTGGCAGCAAATGATATCCTGGATT  
 ACAAGGATGACGACGATAAGGTTTAA

**Protein Sequence:**

>RC225958 representing NM\_001130086  
 Red=Cloning site Green=Tags(s)

MSAVSQQAAPSPLEKSPSTAILCNTCGNVCKGEVLRVQDKYFHIKCFVCKACGCDLAEGGFFVRQGEYI  
 CTLDYQRLYGTRCFSCDQFIEGEVVSALGKTYHPDCFVCAVCRLPFPPGDRVTFNGKECMCQKCSLPVSV  
 GSSAHLSQLRSCGGCGTEIKNGQALVALDKHWHLGCFKCKSCGKLLNAEYISKDGLPYCEADYHAKFGI  
 RCDSCKEYITGRVLEAGEKHYPSCALCVRCGQMFAGEEMEYLQGSIIWHPACRQAARTEDRNKETRST  
 ESIIISVPASSTSGSPSRVIYAKLGGIILDYRDLAALPKSKAIYDIDRPMISYSPYISHSAGDRQSYGEG  
 DQDDRSYKQCRTSSPSTGSVSLGRYTPTSRSPQHYSRPAARRSDGEDGSLDQDNRRKSSWMLKGDADT  
 RTNSPDLDTQSLSHSSGTDRLPLQRMAGDSFHSRFPYSKSDPLPGHGKNGLDQRNANLAPCGADPDASWG  
 MREYKIYPYDSLIVTNRIRVKLPKDVDRTRLERHLSPEEFQEVFGMSIEEFDRLALWKRNDLKKKALLF

**TRTRPLEQKLISEEDLAANDILDYKDDDDKV**

**Chromatograms:**

[https://cdn.origene.com/chromatograms/mk8067\\_c09.zip](https://cdn.origene.com/chromatograms/mk8067_c09.zip)

**Restriction Sites:**

Sgfl-MluI

**Cloning Scheme:**


**ACCN:** NM\_001130086

**ORF Size:** 1677 bp

**OTI Disclaimer:** The molecular sequence of this clone aligns with the gene accession number as a point of reference only. However, individual transcript sequences of the same gene can differ through naturally occurring variations (e.g. polymorphisms), each with its own valid existence. This clone is substantially in agreement with the reference, but a complete review of all prevailing variants is recommended prior to use. [More info](#)

**OTI Annotation:** This clone was engineered to express the complete ORF with an expression tag. Expression varies depending on the nature of the gene.

**Components:** The ORF clone is ion-exchange column purified and shipped in a 2D barcoded Matrix tube containing 10ug of transfection-ready, dried plasmid DNA (reconstitute with 100 ul of water).

- Reconstitution Method:**
1. Centrifuge at 5,000xg for 5min.
  2. Carefully open the tube and add 100ul of sterile water to dissolve the DNA.
  3. Close the tube and incubate for 10 minutes at room temperature.
  4. Briefly vortex the tube and then do a quick spin (less than 5000xg) to concentrate the liquid at the bottom.
  5. Store the suspended plasmid at -20°C. The DNA is stable for at least one year from date of shipping when stored at -20°C.

**RefSeq:** [NM\\_001130086.2](#)

**RefSeq ORF:** 1680 bp

**Locus ID:** 84448

**UniProt ID:** [Q6H8Q1](#)

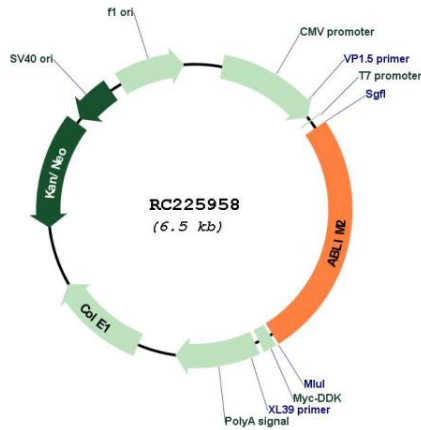
**Cytogenetics:** 4p16.1

**Protein Pathways:** Axon guidance

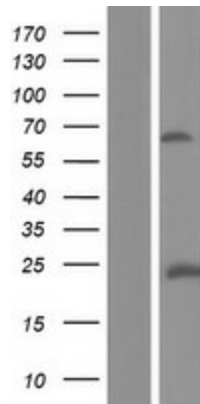
**MW:** 61.8 kDa

**Gene Summary:** May act as scaffold protein. May stimulate ABRA activity and ABRA-dependent SRF transcriptional activity.[UniProtKB/Swiss-Prot Function]

**Product images:**



Circular map for RC225958



Western blot validation of overexpression lysate (Cat# [LY427154]) using anti-DDK antibody (Cat# [TA50011-100]). Left: Cell lysates from untransfected HEK293T cells; Right: Cell lysates from HEK293T cells transfected with RC225958 using transfection reagent MegaTran 2.0 (Cat# [TT210002]).