

## Product datasheet for **RC225954**

### TBCCD1 (NM\_001134415) Human Tagged ORF Clone

#### Product data:

Product Type:	Expression Plasmids
Product Name:	TBCCD1 (NM_001134415) Human Tagged ORF Clone
Tag:	Myc-DDK
Symbol:	TBCCD1
Mammalian Cell Selection:	Neomycin
Vector:	pCMV6-Entry (PS100001)
E. coli Selection:	Kanamycin (25 ug/mL)



[View online »](#)

**ORF Nucleotide Sequence:**

>RC225954 ORF sequence  
 Red=Cloning site Blue=ORF Green=Tags(s)

TTTTGTAATACGACTCACTATAGGGCGGCCGGAATTCGTCGACTGGATCCGGTACCGAGGAGATCTGCC  
 GCC**GCGATCGCC**

ATGGATCAGTCCAGAGTTCTCCTCTGGGTGAAAGCAGAACCCTTTATAGTGGGTGCCTTGCAAGTCCCC  
 CTCCATCCAAGTTTAGTCTTCACTATCTCAGGAAGATATCCACCTATGTGCAAATCCGGGCCACAGAAGG  
 AGCTTACCCGCGCCTCTACTGGTCTACATGGAGGCACATCGCTTGTGGGAAGCTGCAAGTGGCCAAGGAC  
 CTGGCGTGGCTTTACTTCGAAATATTTGATAGTCTTTCAATGAAGACACCTGAGGAGCGCCTGGAATGGT  
 CTGAGGTTCTGTCCAAGTGCATGTCTGAGGAGGAAGTTGAAAAGCAGAGAAATCAGCTTTCAGTGGACAC  
 GCTACAGTTTCTGCTCTTCTTACATTCAACAGTTGAACAAGGTCTCCCTAAGGACATCTTTGATTGGC  
 GAAGAGTGGCCAGTCCCAGAAACAAATCTCAGTCTCCTGACCTGACTGAAAAATCTAATGTGCATAATA  
 AGAACTGGAATGATTACAGTACCAAGCTTTTGTCTATGATCATCTGTCTGATCTCCTCGAGCTGCTTTT  
 AGATCCAAAACAACCTCACTGCATATTTCAATCAACCCATAGTAGTCTAGTGTCTCGAGAAGCTGTTGTG  
 GCCTCAGCTTCCTTATTGAAGGTACAATAAGTAGAGCCAGGAAGATCTATCCACTTCATGAACTTGCAC  
 TGTGGCAACCACTGCATGCAGATAGTGGCTTCTCAAAGATCTCTAAGACTTTCTCTTTCTACAACTGGA  
 AACCTGGTTGAGGTCTGTTTACTGGGAATCCATTTGGTACATCAGCTTGCCTCAAGTCTGAAAAGAAA  
 TTGGCTTGGGCTCATCAAGTTGAAGGGACCACAAAAGAGCTAAGATTGCTTGAATACTCATGTGGCC  
 CTAGGATGCACCGACTGGTAGTGATGAGCCAGGTTTACAAGCAGACACTGGCTAAGAGCTCAGACACTCT  
 GGCGGGGGCACATGTAAGATTGATCGTTGCAACGAATCTTTTATATCTGCTCTCTCCCTTACGATCT  
 GTGACAATTGAGAAGTGCAGGAATAGCATCTTTGTCTTGGGCCCTGTAGGACTACACTTCACTCCACA  
 GTTGTGACAATGTTAAAGTCATTGCTGTTGCCATCGTTTGTCCATCTCTTACAACAGGTTGCATCTT  
 TCAGTTCTTACGCCTACACGCCCACTTATTCTCTCTGGAACCCAGACAGTAACCTTTGCCCTTTTCAT  
 ACACATTACCAATGCTAGAGGACCATATGGCCAGGACTGGCCTTGTACAGTGCCTAAGTATTGGGATA  
 ATCCAATGGTTGTGTGCAGAGAGAACAGCGACACAAGAGTCTTCCAGCTTTTACCACCTTGTGAATTCTA  
 TGTATTTATTATCCCTTTGAAATGGAAGGGGACACAACAGAGATACCCGGGGTCTTCCATCTGTATAT  
 CAGAAAGCACTGGGTCAAAGAGAACAGAAGATACAGATCTGGCAGAAAAGTGAAGGAGGCTCATTGGA  
 CAAAGGATCAAAGGAAGCAGTTCAGGTACTGGTAGAGAAACAAGTTTTATGAATGGTTGATTAATACAGG  
 ACATCGCCAACAGCTGGACAGCCTGTACCCCTGCAGCAGGCTCAAACAAGCAGCTGGA

**ACGCGT**ACGCGGCCGCTCGAGCAGAAACTCATCTCAGAAGAGGATCTGGCAGCAAATGATATCCTGGATT  
 ACAAGGATGACGACGATAAGGTTTAA

**Protein Sequence:**

>RC225954 protein sequence  
 Red=Cloning site Green=Tags(s)

MDQSRVLLVWKAEPFIVGALQVPPPSKFSLSHYLRKISTYVQIRATEGAYPRLYWSTWRHIACGKLQAKD  
 LAWL YFEIFDSL SMKTP EERLEWSEVLSNCMSEEEVEKQRNQLSVDTLQFLLFLYIQQLNKVSLRSLIG  
 EEWPSRPNKSQSPDLTEKSNCHKNWNDYSHQAFVYDHLSDLLELLLDPKQLTASFHSTHSSLVSREAVV  
 ALSFLIEGTISRARKIYPLHELALWQPLHADSGFSKISKTF SFYKLETWLRSLTGNPFGTSACLKSGKK  
 LAWAHQVEGTTKRAKIACNTHVAPRMHRLVVMQVYKQTLAKSSDTLAGAHVKIHRNESFIYLLSPLRS  
 VTIEKCRNSIFVLGPVGTTLHLHSCDNVAVIAVCHRLSISSTTGCIFHVLTPTRPLILSGNQTVTFAPFH  
 THYPML EDHMARTGLATVPNYWDNPMVCRENSDTRVFQLLPPCEFVVF IIPFEMEGDTTEIPGGLPSVY  
 QKALGQREQKIQIWQKT VKEAHLTKDQRKQFQVLVENKFYEWLINTGHRQQLDL VPPAAGSKQAAG

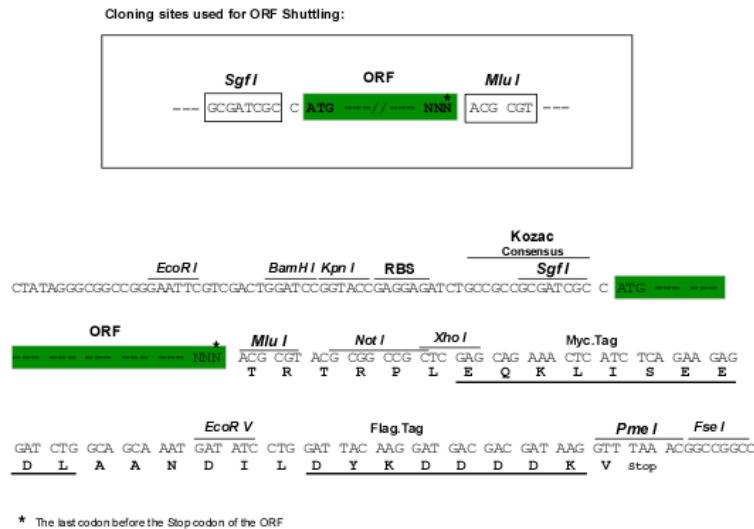
**TRTRPLEQKLI**SEEDLAANDILDYKDDDDKV

**Chromatograms:**

[https://cdn.origene.com/chromatograms/mk6327\\_a05.zip](https://cdn.origene.com/chromatograms/mk6327_a05.zip)

**Restriction Sites:**

Sgfl-Mlul

**Cloning Scheme:**


**ACCN:** NM\_001134415

**ORF Size:** 1671 bp

**OTI Disclaimer:** The molecular sequence of this clone aligns with the gene accession number as a point of reference only. However, individual transcript sequences of the same gene can differ through naturally occurring variations (e.g. polymorphisms), each with its own valid existence. This clone is substantially in agreement with the reference, but a complete review of all prevailing variants is recommended prior to use. [More info](#)

**OTI Annotation:** This clone was engineered to express the complete ORF with an expression tag. Expression varies depending on the nature of the gene.

**Components:** The ORF clone is ion-exchange column purified and shipped in a 2D barcoded Matrix tube containing 10ug of transfection-ready, dried plasmid DNA (reconstitute with 100 ul of water).

**Reconstitution Method:**

1. Centrifuge at 5,000xg for 5min.
2. Carefully open the tube and add 100ul of sterile water to dissolve the DNA.
3. Close the tube and incubate for 10 minutes at room temperature.
4. Briefly vortex the tube and then do a quick spin (less than 5000xg) to concentrate the liquid at the bottom.
5. Store the suspended plasmid at -20°C. The DNA is stable for at least one year from date of shipping when stored at -20°C.

**RefSeq:** [NM\\_001134415.1](#), [NP\\_001127887.1](#)

**RefSeq Size:** 3080 bp

**RefSeq ORF:** 1674 bp

**Locus ID:** 55171

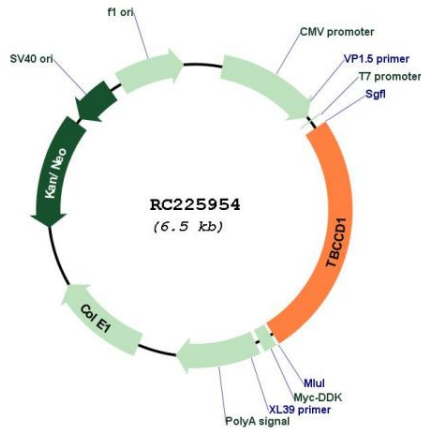
**UniProt ID:** [Q9NVR7](#)

**Cytogenetics:** 3q27.3

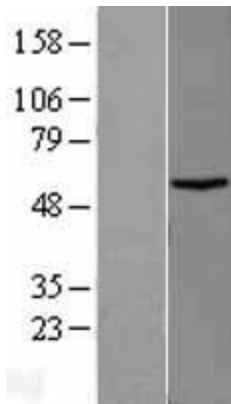
**MW:** 63.5 kDa

**Gene Summary:** Plays a role in the regulation of centrosome and Golgi apparatus positioning, with consequences on cell shape and cell migration.[UniProtKB/Swiss-Prot Function]

**Product images:**



Circular map for RC225954



Western blot validation of overexpression lysate (Cat# [LY427425]) using anti-DDK antibody (Cat# [TA50011-100]). Left: Cell lysates from untransfected HEK293T cells; Right: Cell lysates from HEK293T cells transfected with RC225954 using transfection reagent MegaTran 2.0 (Cat# [TT210002]).