

Product datasheet for **RC225928**

Upstream Binding Protein 1 (UBP1) (NM_001128161) Human Tagged ORF Clone

Product data:

Product Type:	Expression Plasmids
Product Name:	Upstream Binding Protein 1 (UBP1) (NM_001128161) Human Tagged ORF Clone
Tag:	Myc-DDK
Symbol:	Upstream Binding Protein 1
Synonyms:	LBP-1a; LBP-1B; LBP1A; LBP1B
Mammalian Cell Selection:	Neomycin
Vector:	pCMV6-Entry (PS100001)
E. coli Selection:	Kanamycin (25 ug/mL)



[View online »](#)

ORF Nucleotide Sequence:

>RC225928 ORF sequence
 Red=Cloning site Blue=ORF Green=Tags(s)

TTTTGTAATACGACTCACTATAGGGCGGCCGGGAATTCGTCGACTGGATCCGGTACCGAGGAGATCTGCC
 GCC**CGCATCGCC**

ATGGCCTGGGTGCTCAAGATGGACGAGGTGATCGAGTCCGGGCTGGTGCACGACTTCGACGCCAGCCTCT
 CGGGCATCGGGCAGGAAGTGGGCCCGGGCCTTACAGCATGAGTATGTCTTGGCATTGCCATTTTCAA
 GCAGGAAGATTCCAGCCTTCCATTGGATGGTGAACAGAGCACCCACCCTTTCAGTATGTGATGTGTGCT
 GCAACGTCACCAGCAGTAAACTGCATGATGAAACGCTTACTTATTTGAACCAAGGTCAGTCATATGAAA
 TTCGGATGCTGGATAATCGGAAATGGGTGATGCTGAGATCAATGGAAAATTAGTAAAGAGCATCAT
 AAGGGTTGATTCCATGACAGACGGCTACAATACACAGAGCATCAGCAACTTGAAGGATGGAAGTGAAT
 CGCCAGGAGACAGACTTCTTGATTTAGATATTCCAATGTCTGTGGGAATAATTGACACAAGGACGAATC
 CAAGCCAGTTAAATGCGGTTGAATTTCTGTGGACCCAGCAAAACGCACCTCTGCTTTCATTAGGTACA
 CTGCATCAGCACAGAATTTACTCCAGGAAGCAGGAGGTGAAAAGGGAGTGCCCTTTAGGATCCAGGTT
 GACGCCTTAAGCAGAATGAAAATGGAGAATACACAGATCATCTACACTAGCTAGCTGCCAAATCAAAG
 TTTTAAAGCCTAAAGGTGCAGACAGGAAACAAAAAAGTACCCGAGAGAAGATGGAGAAGAGAAGCAGCTCA
 TGAAAAAGAAAAGTATCAGCCGCTCATGATACCAATCCTCACAGAGATGAGGCTTGAGCCTATAATT
 GAAGATGCAGTTGAACATGAGCAGAAAAAGTCCAGCAAGCGGACTTTGCCAGCAGACTACGGTATTCTC
 TGGCAAAGCGAGGCGATTGTTCTCCGTGGCCCGATGCCCCACAGCCTATGTGAATAACAGCCCTCCCC
 AGCGCCCACTTTCACCTCCCCACAGCAGACACTTGCAGTGTCCAGACAGCAATTTCTTCCCCAAAT
 CATCAGGGAGATGGAGCTTACAGACCTCTGGTGAACAAATTCAGCCTTCAGCTACGATCCAGGAAACAC
 AGCAATGGCTGCTCAAAAACAGATTCTCTTCTACACAAGACTGTTCTTAATTTTTCAGTGCCGACTT
 ATTAATAACTGACAAAGGAGGATTTAGTTCAAATTTGTGGTGCAGCCGATGGAATTCGGCTCTATAATTCA
 CTGAAGTCAAGGTCGGTTAGACCCGTTTAAACATCTATGTCTGCCGGGAGCAGCCAAGCAGCACAGTGC
 TGCAAGGGCAGCAGCAAGCTGCAAGCAGTGAAGCGAGAATGGCAGTGGGGCACCCATGTTTATCATGC
 AATCTACTTGAAGAAAATGATTGCCTCAGAAGTTGCTCGAAAACCTGCGCTGGTGTTTAATATCCCTCTC
 CACCAAATTAATCAGGTTTACAGACAGGGTCCCACCGGATTACATTCTTGTAGTGATCAGATGGTTC
 AGAATTTCAAGATGAGAGTTGTTTTTATTCTCCACAGTGAAGCTGAAAGTAGTGATGGCATCCACAT
 AATTTTGAAG

ACGCGTACGCGGCCGCTCGAGCAGAAACTCATCTCAGAAGAGGATCTGGCAGCAAATGATATCCTGGATT
 ACAAGGATGACGACGATAAGGTTTAA

Protein Sequence:

>RC225928 protein sequence
 Red=Cloning site Green=Tags(s)

MAWVLMDEVIESGLVHDFDASLSGIGQELGAGAYSMSDVLALPIFKQEDSSLPLDGETEHPFPQYVMCA
 ATSPAVKLHDETLTYLNQGQSYEIRMLDNRKMGDMPEINGKLVKSIIRVVFHRRRLQYTEHQQLEGWKWN
 RPDRLDLLDIPMSVGIIDTRTNPSQLNAVEFLWDPKRTSAFIQVHCISTEFTPRKHGEGKVPFRIQV
 DAFKQENGEYTDHLHSASCQIKVFKPKGADRKQKTDREKMEKRTAHEKEKYQPSYDTTILTEMRLPII
 EDAVEHEQKSSKRTLADYDGLAKRGSCSPWDAPTAYVNNSPSPAPFTTSPQQSTCSVPDSNSSSPN
 HQGDGASQTSGEIQPSATIQTQQWLLKNRFSYTRLSNFSGADLLKLTEDLVQICGAADGIRLYNS
 LKRSRVRPRLTIYVCREQPSSTVLQGGQQAASSASENGSGAPYVYHAIYLEEMIASVARKLALVFNIP
 HQINQVYRQGPITGIHILVSDQMVQNFQDESCFLFSTVKAESSDGIHIIK

TRTRPLEQKLISEEDLAANDILDYKDDDDKV

Chromatograms:

https://cdn.origene.com/chromatograms/mk6513_c01.zip

Restriction Sites:

Sgfl-MluI

Cloning Scheme:


ACCN: NM_001128161

ORF Size: 1620 bp

OTI Disclaimer: The molecular sequence of this clone aligns with the gene accession number as a point of reference only. However, individual transcript sequences of the same gene can differ through naturally occurring variations (e.g. polymorphisms), each with its own valid existence. This clone is substantially in agreement with the reference, but a complete review of all prevailing variants is recommended prior to use. [More info](#)

OTI Annotation: This clone was engineered to express the complete ORF with an expression tag. Expression varies depending on the nature of the gene.

Components: The ORF clone is ion-exchange column purified and shipped in a 2D barcoded Matrix tube containing 10ug of transfection-ready, dried plasmid DNA (reconstitute with 100 ul of water).

Reconstitution Method:

1. Centrifuge at 5,000xg for 5min.
2. Carefully open the tube and add 100ul of sterile water to dissolve the DNA.
3. Close the tube and incubate for 10 minutes at room temperature.
4. Briefly vortex the tube and then do a quick spin (less than 5000xg) to concentrate the liquid at the bottom.
5. Store the suspended plasmid at -20°C. The DNA is stable for at least one year from date of shipping when stored at -20°C.

RefSeq: [NM_001128161.1](#), [NP_001121633.1](#)

RefSeq Size: 3781 bp

RefSeq ORF: 1623 bp

Locus ID: 7342

UniProt ID: [Q9NZI7](#)

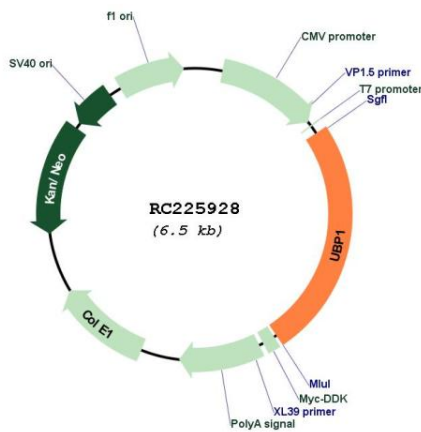
Cytogenetics: 3p22.3

Protein Families: Transcription Factors

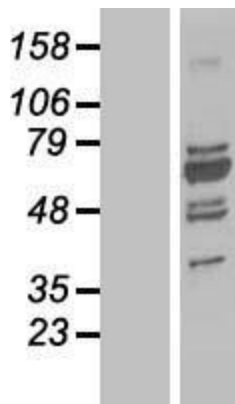
MW: 60.5 kDa

Gene Summary: Functions as a transcriptional activator in a promoter context-dependent manner. Modulates the placental expression of CYP11A1. Involved in regulation of the alpha-globin gene in erythroid cells. Activation of the alpha-globin promoter in erythroid cells is via synergistic interaction with TFCP2 (By similarity). Involved in regulation of the alpha-globin gene in erythroid cells. Binds strongly to sequences around the HIV-1 initiation site and weakly over the TATA-box. Represses HIV-1 transcription by inhibiting the binding of TFIID to the TATA-box.[UniProtKB/Swiss-Prot Function]

Product images:



Circular map for RC225928



Western blot validation of overexpression lysate (Cat# [LY426903]) using anti-DDK antibody (Cat# [TA50011-100]). Left: Cell lysates from untransfected HEK293T cells; Right: Cell lysates from HEK293T cells transfected with RC225928 using transfection reagent MegaTran 2.0 (Cat# [TT210002]).