

Product datasheet for **RC225925**

Netrin G1 (NTNG1) (NM_001113226) Human Tagged ORF Clone

Product data:

Product Type:	Expression Plasmids
Product Name:	Netrin G1 (NTNG1) (NM_001113226) Human Tagged ORF Clone
Tag:	Myc-DDK
Symbol:	Netrin G1
Synonyms:	Lmnt1
Mammalian Cell Selection:	Neomycin
Vector:	pCMV6-Entry (PS100001)
E. coli Selection:	Kanamycin (25 ug/mL)



[View online »](#)

ORF Nucleotide Sequence:

>RC225925 representing NM_001113226
 Red=Cloning site Blue=ORF Green=Tags(s)

TTTTGTAATACGACTCACTATAGGGCGGCCGGAATTCGTCGACTGGATCCGGTACCGAGGAGATCTGCC
 GCC**CGCATCGCC**

ATGATATTTGTCAAGATTCCTGTGCGATTCATGCCCTTTGGGTTACGGTGTCTCAGTGATGCAGCCCTACC
 CTTTGGTTTGGGACATTATGATTTGTGTAAAGACTCAGATTTACACGGAAGAAGGAAAGTTTGGGATTA
 CATGGCCTGCCAGCCGGAATCCACGGACATGACAAAATATCTGAAAGTAAACTCGATCCTCCGGATATT
 ACCTGTGGAGACCCTCCTGAGACGTTCTGTGCAATGGGCAATCCCTACATGTGCAATAATGAGTGTGATG
 CGAGTACCCTGAGCTGGCACACCCCTGAGCTGATGTTTGAATTTGAAGGAAGACATCCCTCCACATT
 TTGGCAGTCTGCCACTTGAAGGAGTATCCCAAGCCTCTCCAGGTTAACATCACTCTGTCTTGGAGCAAA
 ACCATTGAGCTAACAGACAACATAGTTATTACCTTTGAATCTGGGCGTCCAGACCAAATGATCCTGGAGA
 AGTCTCTCGATTATGGACGAACATGGCAGCCCTATCAGTATTATGCCACAGACTGCTTAGATGCTTTTCA
 CATGGATCCTAAATCCGTGAAGGATTTATCACAGCATACGGTCTTAGAAATCATTTCACAGAAGAGTAC
 TCAACAGGGTATACAACAATAGCAAAATATCCACTTTGAAATCAAAGACAGGTTTCGCGTTTTTGGCTG
 GACCTCGCTACGCAATATGGCTTCCCTCTACGGACAGCTGGATACAACCAAGAAACTCAGAGATTTCTT
 TACAGTACAGACCTGAGGATAAGGCTGTTAAGACCAGCCGTTGGGGAAATATTTGTAGATGAGCTACAC
 TTGGCAGCCTACTTTTACGCGATCTCAGACATAAAGGTGCGAGGAAGGTGCAAGTGAATCTCCATGCCA
 CTGTATGTGTGTATGACAACAGCAAATGACATGCGAATGTGAGCACAACACTACAGGTCAGACTGTGG
 GAAATGCAAGAAGAAATTCAGGGCCGACCTTGGAGTCCAGGCTCCTATCTCCCATCCCCAAAGGCACT
 GCAAATACCTGTATCCCCAGTATTTCCAGTATTGGTAATTGTGAATGCTTCGGCCACTCCAATCGATGCA
 GTTATATCGATCTGCTAAATACAGTCAATTCGCTGAGCTGTAACACAACACTAGAGGGCAGCAGCTGTA
 GTTATGACAGGCTGGGCTACTTCAGAAATGCTTCTGCACAACCTGGACGATGAGAATGTGTGCATAGAGTGT
 TATTGTAACCCCTTTGGGCTCAATCCATGATCGTTGTAATGGCTCAGGATTTTGTGAGTGTAAAGACTGGAA
 CAACAGGGCCTAAGTGTGATGAGTGTCTGCCGGGAAATCCTGGCACTACGGCTGTCAACCGAATGTCTG
 CGACAACGAGCTCCTGCACTGCCAGAACGGAGGACGTGCCACAACAACGTGCGCTGCTGTGCCCGGCC
 GCATACACGGGCATCCTCTGCGAGAAGCTGCGGTGCGAGGAGGCTGGCAGCTGCGCTCCGACTCTGGCC
 AGGGCGCGCCCCGCACGGCTCCCAGCGCTGCTGCTGCTGACCAGCTGCTGGGAACCGCCAGCCCCCT
 GGTGTTCC

ACGCGTACGCGGCCGCTCGAGCAGAAACTCATCTCAGAAGAGGATCTGGCAGCAAATGATATCCTGGATT
 ACAAGGATGACGACGATAAGGTTTAA

Protein Sequence:

>RC225925 representing NM_001113226
 Red=Cloning site Green=Tags(s)

MYLSRFLSIHALWVTSSVMQPYPLVWGHYDLCKTQIYTEEGKVVDYMACQPESTDMTKYLKVKLDPPDI
 TCGDPPETF CAMGNPYMCNNECDASTPELAHPPELMFDFEGRHPSTFWQSATWKEYPKPLQVNITLSWSK
 TIELTDNIVITFESGRPDQMIKSLDYGRWQPYQYYATDCLDAFHMDPKSVKDL SQHTVLEIICTEY
 STGYTTNSKIIHFEIKDRFAFFAGPRLRNMASLYQLDTTKKLRDFFTVTDLRIRLLRPVGEIFVDELH
 LARYFYAISDIKVRGRCKNLHATVVCVYDNSKLTCECEHNTTGPDCGKCKNYQGRPWSGYSYLPKGT
 ANTCIPSISSIGNCECFGHSNRCSYIDLNTVICVSKHNTRGQHCELCRLGYFRNASQLDDENVCIEC
 YCNPLGSIHDCNGSGFCECKTGTTPKCDCLPGNSWHYGCQPNVCDNELLHCQNGGTCHNNVRCLCPA
 AYTGILCEKLRCEEAGSGSDSGQAPPHGSPALLLLTLLGTASPLVF

TRTRPLEQKLI SEEDLAANDILDYKDDDDKV

Chromatograms:

https://cdn.origene.com/chromatograms/mk8066_c03.zip

Restriction Sites:

Sgfl-Mlul

Cloning Scheme:


ACCN: NM_001113226

ORF Size: 1617 bp

OTI Disclaimer: The molecular sequence of this clone aligns with the gene accession number as a point of reference only. However, individual transcript sequences of the same gene can differ through naturally occurring variations (e.g. polymorphisms), each with its own valid existence. This clone is substantially in agreement with the reference, but a complete review of all prevailing variants is recommended prior to use. [More info](#)

OTI Annotation: This clone was engineered to express the complete ORF with an expression tag. Expression varies depending on the nature of the gene.

Components: The ORF clone is ion-exchange column purified and shipped in a 2D barcoded Matrix tube containing 10ug of transfection-ready, dried plasmid DNA (reconstitute with 100 ul of water).

- Reconstitution Method:**
1. Centrifuge at 5,000xg for 5min.
 2. Carefully open the tube and add 100ul of sterile water to dissolve the DNA.
 3. Close the tube and incubate for 10 minutes at room temperature.
 4. Briefly vortex the tube and then do a quick spin (less than 5000xg) to concentrate the liquid at the bottom.
 5. Store the suspended plasmid at -20°C. The DNA is stable for at least one year from date of shipping when stored at -20°C.

RefSeq: [NM_001113226.3](#)

RefSeq ORF: 1620 bp

Locus ID: 22854

UniProt ID: [Q9Y2I2](#)

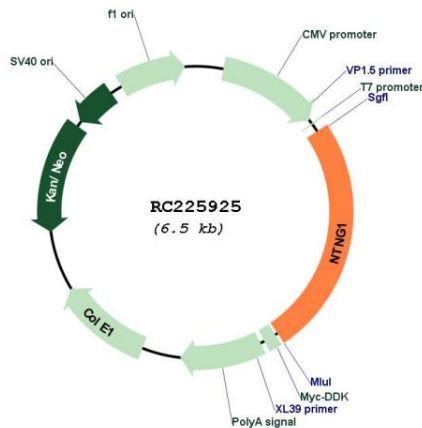
Cytogenetics: 1p13.3

Protein Pathways: Axon guidance

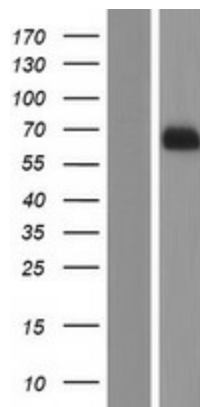
MW: 60.4 kDa

Gene Summary: This gene encodes a preproprotein that is processed into a secreted protein containing eukaryotic growth factor (EGF)-like domains. This protein acts to guide axon growth during neuronal development. Polymorphisms in this gene may be associated with schizophrenia. Alternative splicing results in multiple transcript variants encoding distinct isoforms. [provided by RefSeq, Aug 2015]

Product images:



Circular map for RC225925



Western blot validation of overexpression lysate (Cat# [LY426394]) using anti-DDK antibody (Cat# [TA50011-100]). Left: Cell lysates from untransfected HEK293T cells; Right: Cell lysates from HEK293T cells transfected with RC225925 using transfection reagent MegaTran 2.0 (Cat# [TT210002]).