

Product datasheet for **RC225916**

ZNF397 (NM_001135178) Human Tagged ORF Clone

Product data:

Product Type:	Expression Plasmids
Product Name:	ZNF397 (NM_001135178) Human Tagged ORF Clone
Tag:	Myc-DDK
Symbol:	ZNF397
Synonyms:	ZNF47; ZSCAN15
Mammalian Cell Selection:	Neomycin
Vector:	pCMV6-Entry (PS100001)
E. coli Selection:	Kanamycin (25 ug/mL)



[View online »](#)

ORF Nucleotide Sequence:

>RC225916 representing NM_001135178
 Red=Cloning site Blue=ORF Green=Tags(s)

TTTTGTAATACGACTCACTATAGGGCGGCCGGGAATTCGTCGACTGGATCCGGTACCGAGGAGATCTGCC
 GCC**GCGATCGCC**

ATGGCTGTGGAATCTGGAGTGATTTCAACCCTGATACCTCAGGATCCTCCGGAACAAGAACTAATACTAG
 TGAAGTAGAAGATAACTTTTCCTGGGATGAGAAATTTAAGCAGAATGGGAGTACTCAATCCTGCCAAGA
 ATTGTTTCGTCAGCAATTCAGAAAATTTTCTACCAGGAGACACCTGGGCCCCGGGAGGCTCTGAGCCGA
 CTCAGGAACCTTTGCTATCAGTGGCTAATGCCAGAGTTGCACACAAAGGAGCAGATCTTAGAACTGCTGG
 TACTGGAGCAGTTCCTGAGCATTCTGCCTGAGGAGCTGCAGATCTGGTTTACGCAACATAATCCAGAAAG
 CGGCGAGGAAGCTGTGACCCTGTTGGAGGATTTAGAGAGGGAGTTTATGACCCAGGGCAGCAGGTCCCA
 GCTAGTCCACAGGGACCAGCAGTCCATGGAAGGATTTAACATGTCTCAGAGCATCCAAGAGTCAACAG
 ACATCCACCTCCAGCCCTAAAGACACAGCTGAAATCCTGGAAACCATGCCTTTCCCTAAAAGTGATTG
 TGAGAACAGTGAACAGCAACAAAAGAGGGCATCTCAGAAGAAAATCACAGGGACTCCCTCAGGAACCT
 TCAATTCGAGGAATTAGTGAGCATGAAAGCAATTTAGTGTGGAAGCAAGGAAGTGTACAGGGGAGAAAC
 TAAGATCTCCTTCCCAAGGGGGCAGTTTATGTCAGTGTCTTCCAAACAAATCTCTAGAAAAGAGAGA
 CCTTTATGATGAGGCTGAAAGATGCTTGATTCTAACTACAGACTCTATAATGTGTGAGAAAGTTCCTCCA
 GAAGAGAGACCTTATAGATGTGATGTATGTGGGCACAGCTTCAAGCAGCATTCTCTCTAACACAACATC
 AGAGAATCCATACTGGAGAAAAGCCCTATAAATGTAACCAAGTGTGGGAAGGCCTTTAGTTTGAGGTCTTA
 TCTTATTATTCATCAGAGAATTCATAGTGGTGAGAAAAGCATATGAATGTAGTGAATGTGGAAAGCTTTC
 AATCAGAGCTCAGCCCTCATTAGACATCGAAAAATCCATACTGGTGAGAAAAGCTTGAAAATGTAATGAGT
 GTGGCAAAGCATTTCAGTCAAAGTTCATATCTCATTATACATCAAAGAATTCACACTGGTGAGAAAACCTTA
 TGAGTGAATGAATGTGGGAAAACCTTTAGCCAGAGCTCAAACCTATTAGACATCAGCGAATTCACACA
 GGAGAGAGACCCTATGAATGTAATGAATGTGGAAAAGCTTTCAGGCAGAGCTCAGAGCTGATTACTCATC
 AGAGAATACATAGTGGAGAGAAAACCTATGAATGTAGTGAATGTGGAAAAGCTTTCAGTTTGAGCTCAAA
 CCTTATCAGACATCAGAGAATTCATAGTGGGAGGAACCTTATCAGTGAATGAATGTGGCAAACCTTTC
 AAAAGGAGCTCAGCCCTTGTTCAGCATCAGAGAATTCATTCTGGGGATGAAGCTTATATATGTAATGAAT
 GTGGGAAGGCTTTCAGGCACAGATCGGTCTTATGCGCCATCAAAGAGTCCACACTATAAAG

ACGCGTACGCGGCCGCTCGAGCAGAAACTCATCTCAGAAGAGGATCTGGCAGCAAATGATATCTGGATT
 ACAAGGATGACGACGATAAGGTTTAA

Protein Sequence:

>RC225916 representing NM_001135178
 Red=Cloning site Green=Tags(s)

MAVESGVISTLIPQDPPEQELILVKVEDNFSWDEKFKQNGSTQSCQELFRQQFRKFCYQETPGPREALSR
 LQELCYQWLMPELHTKEQILELLVLEQFLSILPEELQIWWQQHNPESGEEAVTLLEDLEREFDDPGQQVP
 ASPQGPVAVPWKDLTCLRASQESTDIHLQPLKTQLKSWKPCLSPKSDCENSETATKEGISEEKSQGLPQEP
 SFRGISEHESNLVWKQGSATGEKLRSPSQGGSFSQVIFTNKS LGKRDLYDEAERCLILTTDSIMCQKVP
 EERPYPYRCDVCGHSFKQHSSLTQHQRITHTGEKPYKCNQCGKAFSLRSYLIHQRIHSGEKAYECSECGKAF
 NQSSALIRHRKIHTGEKACKCNECGKAFSQSSYLIHQRIHTGEKPYECNECGKTFSSKLIHQRIHT
 GERPYECNECGKAFRQSSSELITHQRIHSGEKPYECSECGKAFSLSSNLIRHQRIHSGEOPYQCNECGKTF
 KRSSALVQHQRHSGDEAYICNECGKAFRHRVLMRHRVHTIK

TRTRPLEQKLISEEDLAANDILDYKDDDDKV

Chromatograms:

https://cdn.origene.com/chromatograms/mk8065_h12.zip

Restriction Sites:

Sgfl-Mlul

Cloning Scheme:


ACCN: NM_001135178

ORF Size: 1602 bp

OTI Disclaimer: The molecular sequence of this clone aligns with the gene accession number as a point of reference only. However, individual transcript sequences of the same gene can differ through naturally occurring variations (e.g. polymorphisms), each with its own valid existence. This clone is substantially in agreement with the reference, but a complete review of all prevailing variants is recommended prior to use. [More info](#)

OTI Annotation: This clone was engineered to express the complete ORF with an expression tag. Expression varies depending on the nature of the gene.

Components: The ORF clone is ion-exchange column purified and shipped in a 2D barcoded Matrix tube containing 10ug of transfection-ready, dried plasmid DNA (reconstitute with 100 ul of water).

Reconstitution Method:

1. Centrifuge at 5,000xg for 5min.
2. Carefully open the tube and add 100ul of sterile water to dissolve the DNA.
3. Close the tube and incubate for 10 minutes at room temperature.
4. Briefly vortex the tube and then do a quick spin (less than 5000xg) to concentrate the liquid at the bottom.
5. Store the suspended plasmid at -20°C. The DNA is stable for at least one year from date of shipping when stored at -20°C.

RefSeq: [NM_001135178.3](#)

RefSeq ORF: 1605 bp

Locus ID: 84307

UniProt ID: [Q8NF99](#)

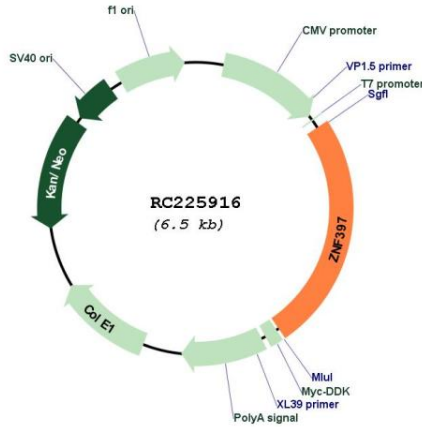
Cytogenetics: 18q12.2

Protein Families: Transcription Factors

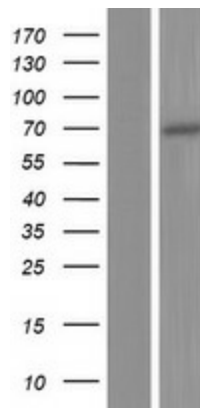
MW: 61 kDa

Gene Summary: This gene encodes a protein with a N-terminal SCAN domain, and the longer isoform contains nine C2H2-type zinc finger repeats in the C-terminal domain. The protein localizes to centromeres during interphase and early prophase, and different isoforms can repress or activate transcription in transfection studies. Multiple transcript variants encoding different isoforms have been found for this gene. Additional variants have been described, but their biological validity has not been determined. [provided by RefSeq, Oct 2009]

Product images:



Circular map for RC225916



Western blot validation of overexpression lysate (Cat# [LY427576]) using anti-DDK antibody (Cat# [TA50011-100]). Left: Cell lysates from untransfected HEK293T cells; Right: Cell lysates from HEK293T cells transfected with RC225916 using transfection reagent MegaTran 2.0 (Cat# [TT210002]).