

Product datasheet for **RC225906**

ANKRD53 (NM_001115116) Human Tagged ORF Clone

Product data:

Product Type:	Expression Plasmids
Product Name:	ANKRD53 (NM_001115116) Human Tagged ORF Clone
Tag:	Myc-DDK
Symbol:	ANKRD53
Mammalian Cell Selection:	Neomycin
Vector:	pCMV6-Entry (PS100001)
E. coli Selection:	Kanamycin (25 ug/mL)



[View online »](#)

ORF Nucleotide Sequence:

>RC225906 representing NM_001115116
 Red=Cloning site Blue=ORF Green=Tags(s)

TTTTGTAATACGACTCACTATAGGGCGGCCGGGAATTCGTGACTGGATCCGGTACCGAGGAGATCTGCC
 GCC**CGGATCGCC**

ATGGCCTCCGCGGCAGCACCGCTCGGCGGGCGGCTCCGGAAGCTGGCACTCAGAAAGGGGAGAAGGGA
 GAGGTGCTCGGCCGAGCCAACCTCAAGTGGCTCCATGCAGCAGGCGAACAAAGTCTCCTTGAAGGCCAC
 CTGGACTGACGCGGAGTCCAAGCAGCCAGCCAGCCCTGCCGACCTCGCAGACCACCTCAGTGCAGAG
 GCGACTGCCCTCGCCAGGCCGCGCCGCCCTGCCTCGCTCACCCCGCCCGCGCTGACCCAGCCAGCA
 AGGAGTCCGACCAGCGCAATCGACCAGCGGATCGGGAGCTACTACCAGCTGTTTCGACGGCTGT
 GGGCAACGTGGAATGGCTGCGATTCTGTCTGAACCAGAGCCTCAGGAAATCCCCACCGACGACAAGGGC
 TTAAGTCCGATCCACTTCGCCGCCAATGGGGCAAGCTTGCATGCCTGCAGGTCTGGTAGAGGAGTACA
 AGTTTCCCGTGGACCTGTGACCAACAATAGCCAGACACCCTGCACCTCGTCATCCACAGGACAACAC
 CACCGTGGCCCTCCCCTGCATCTACTACCTGCTGGAGAAAGGCGCAGACCTCAATGCTCAGACATGCAAC
 GGTCCACGCCCCCTGCACCTGGCAGCCCCGTGACGGCTTGTGGACTGTGTGAAGTCTGGTGCAGAGTG
 GCGCAACGTCCATGCCAAGATGCCATGGGCTACAAACCCATTGACTTCTGCAAAATATGGAACCCCG
 TGCTGTGCCCGTTCTTGAAGGATGCCATGTGAAAAAGGACAAGAAGGACTTTGCCCGTGAGATGACG
 AAAATGAAGATGTTCAAGAGCCAGCTGACCCTCATGGAGCACAACCTACCTGATTGAGTATCAAAAAGAGC
 ACAAAATCTCAGAGAAGCTGCTATCAGAAAGTGGCTCCACGGCAAGCTGCACCCAGGCCACTCTCTGGT
 CTCCAATACCAAGCAAGCCCGGCCACCGCCCTCTCAAGACCCAGAGCAACGGGAATCGCAGCGTTCC
 AGGAGCTCCACCCCTCTGTGGATGCACGCTGCAATGCATTCCACAGCCACGGAGATGCCAAGCCCA
 TCTACAGGAAGCCACGGTCAAGCGGCCACAATGTGGAATGTTAGCAACAACCCCGCAGACCCCCAC
 CACCAGATCAGCCACTCGCAGGGCATCCGCTGGGCGTGCATCCAGACCCCACTCCGGAGCAGCACTTC
 AGCAGTTCCTGGAGGTGAGGCCTGATGGGCACGGCGGTGCGCGCTGCACACAGTGGACGGCCACTGGG
 TGGCGCCCGTGCCGCGGCTGCCTTTTGAAGTGTGCTGCGCATGCTGTACCCACGTGATGGCCATACAG
 AATGAAGGTGCCCGAGGCTTTTACCCATCAGCATGAGGGAAGTGGCCAGGAAGCGGCACCTGGGTGAC
 AACACCTTCTGGACCGACACTCTGGCCATGAACCTGCGTGACACATTCGATGAAGCTTCTGGCAGCTG
 TGCGATTCATCAAGGACTCCCCACCTGCCCTCCCCACAACCAACCCA

ACGCGTACGCGGCCGCTCGAGCAGAACTCATCTCAGAAGAGGATCTGGCAGCAAATGATATCCTGGATT
 ACAAGGATGACGACGATAAGGTTTAA

Protein Sequence:

>RC225906 representing NM_001115116
 Red=Cloning site Green=Tags(s)

MASAGSTARRAGSGSWHSERGEGRGARQPPTPSGSMQQANKVSLKATWTDAESKQPSQPLPDLADHL
 SAQATALARPRRPASLTTPRADPSPSKESDQTAIDQTAIGSYQYQLFAAAVGNVEWLRFLCNQSLREIPTDDKG
 FTAIHFAAQWGLACLQVLVEEYKFPVDLLTNNSQTPLHLVIHRDNTTVALPCIYYLLEKADLNAQTCN
 GSTPLHLAARDGLLDVQVQSGANVHAQDAMGYKPIDFCKIWNHRACARFLKDDAMWKKDKDFAREMT
 KMKMFKSQLTMEHNYLIEYQKEHKILREAAIRKWLHGKLPGLSLSVNTKQARATALSKTPEQRESQRS
 RSFHPVSVDARLQCIQPQTEMPKPIYRKPTVKRPTMWNVSNPAPRPTTQISHSQIRLGVHPDPTPEHDF
 SSFLEVRPDGHHGARLHTVDGHWVAPVPRLPFEVLLRMLYPRVWPYRMKVPQGFYPIISMREVPRKRLHGD
 NTFWTDTLAMNLRDTFDEAFLAAVRSHQGLPTLPSPQTNP

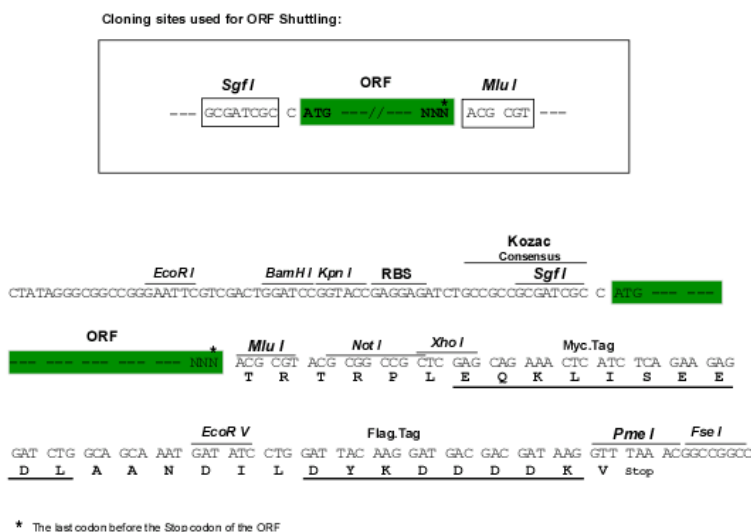
TRTRPLEQKLISEEDLAANDILDYKDDDDKV

Chromatograms:

https://cdn.origene.com/chromatograms/mk8065_f11.zip

Restriction Sites:

SgfI-MluI

Cloning Scheme:


ACCN: NM_001115116

ORF Size: 1590 bp

OTI Disclaimer: The molecular sequence of this clone aligns with the gene accession number as a point of reference only. However, individual transcript sequences of the same gene can differ through naturally occurring variations (e.g. polymorphisms), each with its own valid existence. This clone is substantially in agreement with the reference, but a complete review of all prevailing variants is recommended prior to use. [More info](#)

OTI Annotation: This clone was engineered to express the complete ORF with an expression tag. Expression varies depending on the nature of the gene.

Components: The ORF clone is ion-exchange column purified and shipped in a 2D barcoded Matrix tube containing 10ug of transfection-ready, dried plasmid DNA (reconstitute with 100 ul of water).

Reconstitution Method:

1. Centrifuge at 5,000xg for 5min.
2. Carefully open the tube and add 100ul of sterile water to dissolve the DNA.
3. Close the tube and incubate for 10 minutes at room temperature.
4. Briefly vortex the tube and then do a quick spin (less than 5000xg) to concentrate the liquid at the bottom.
5. Store the suspended plasmid at -20°C. The DNA is stable for at least one year from date of shipping when stored at -20°C.

RefSeq: [NM_001115116.2](#)

RefSeq ORF: 1593 bp

Locus ID: 79998

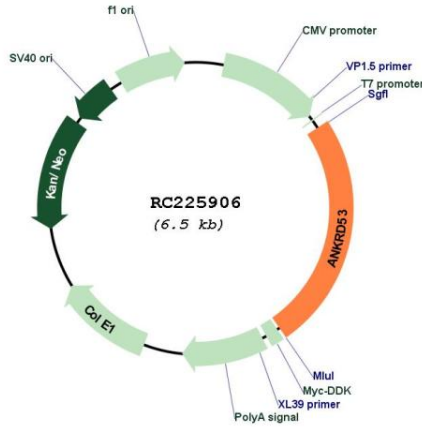
UniProt ID: [Q8N9V6](#)

Cytogenetics: 2p13.3

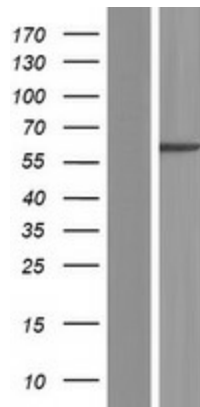
MW: 59.4 kDa

Gene Summary: Required for normal progression through mitosis. Involved in chromosome alignment and cytokinesis via regulation of microtubules polymerization.[UniProtKB/Swiss-Prot Function]

Product images:



Circular map for RC225906



Western blot validation of overexpression lysate (Cat# [LY426523]) using anti-DDK antibody (Cat# [TA50011-100]). Left: Cell lysates from untransfected HEK293T cells; Right: Cell lysates from HEK293T cells transfected with RC225906 using transfection reagent MegaTran 2.0 (Cat# [TT210002]).