

Product datasheet for **RC225900**

GTF3C5 (NM_001122823) Human Tagged ORF Clone

Product data:

Product Type:	Expression Plasmids
Product Name:	GTF3C5 (NM_001122823) Human Tagged ORF Clone
Tag:	Myc-DDK
Symbol:	GTF3C5
Synonyms:	TFiiiC2-63; TFIIIC63; TFIIICepsilon
Mammalian Cell Selection:	Neomycin
Vector:	pCMV6-Entry (PS100001)
E. coli Selection:	Kanamycin (25 ug/mL)



[View online »](#)

ORF Nucleotide Sequence:

>RC225900 representing NM_001122823
 Red=Cloning site Blue=ORF Green=Tags(s)

TTTTGTAATACGACTCACTATAGGGCGGCCGGGAATTCGTCGACTGGATCCGGTACCGAGGAGATCTGCC
 GCC**CGCATCGCC**

ATGGCGCGGAGGCGGCCGATTTGGGGCTGGGGCCGCCCTCCCGTGGAGCTGAGGCGGGAGCGACGCA
 TGGTGTGCGTGGAGTACCGGGAGTGGTGCCTGATGTGGCTAAGATGCTGCCGACTCTGGCGCGGAGGA
 AGGCGTCTCCCGATCTACGCAGACCCACCAAGAGGCTGGAGCTGTACTTCCGGCCCAAGGACCCATAC
 TGCCACCCAGTGTGCGCCAACCGCTTCACTACCAGCAGCCTGCTGCTCCGCATCAGGAAGAGAACGAGGC
 GGCAGAAAGGGTGTGGGCACTGAGGCCACTCCGAGGTACATTTGACATGGAGATCCTTGGCATCAT
 CTCCACCATTTACAAATTTAGGGGATGTCTGACTTCCAGTACTTGGCTGTGCATACGGAAGCAGGCGGC
 AAGCATACGTCAATGTATGACAAGGTGCTCATGCTCCGGCCGAGAAGGAGGCCTTTTTCCACCAGGAGC
 TGCCGCTCTACATCCCCCACCATCTTCTCCCGCTGGACGCCCGGTGGACTACTTCTACCGACCAGA
 GACCCAGCACCGGAAGGCTACAACAATCCCCCATCTCAGGTGAGAATCTGATTGGCCTGAGCAGAGCC
 CGGCGCCCCACAATGCCATCTTTGTCACTTTGAGGATGAGGAGGTGCCAAGCAGCCACTGGAGGCTG
 CAGCCCAGACGTGGAGGAGAGTCTGCACTAACCCCGTGGACCGGAAGGTGGAGGAGGAGCTGAGGAAGCT
 GTTTGACATCCGTCCTATCTGGTCCCGAAATGCTGTCAAGGCCAACATCAGCGTCCACCCAGACAAGCTC
 AAGGTCTTGCTTCCCTTCATAGCCTATTACATGATAACAGGCCCTGGCGCAGCCTATGGATTGATTTG
 GGTATGACCCCGAAAAAACCCAGATGCCAAGATTTATCAAGTCTCGATTTCCGAATCCGTTGTGGAAT
 GAAACACGGTTACGCCCCAGTACTTCCCGGTCAAAGCAAAGCGCAGCACCTACAACACAGCCTCCCC
 ATCACCGTCAAGAAGACATCCAGCCAGCTTGTCAACATGCATGACCTGAAGCAGGGCCTGGGCCCGTCCG
 GGAGGAGTGGTCTCGGAACCCAGCTTCCAGCAAGTACAAGCTCAAGGTGAGCCTTCCAGACTGAGGGA
 CTCTGTCTACATCTTCCGGGAAGGGCCTTGCCACCCTATCGGCAGATGTTCTACCAGTTATGCGACTTG
 AATGTGGAAGAGTTGAGAAGATCATTACCGCAATGACGGGCGAGAGAATTCCTGCACAGAACGGGATG
 GGTGGTGCCTCCCAAGACCAGCGACGAGCTCAGGGACACCATGTCCCTCATGATCCGGCAGACCATCCG
 CTCCAAGAGGCTGCTCTCTTTTCCAGCTCAGCCAAGGCTGATGGCGAAAAGAGCAGCTGACGTACGAG
 TCTGGGAAGACGAGGAGGATGAGGAGGAGGAGGAAGAGGAGGAGGACTTCAAGCCATCCGACGGCA
 GTGAAAACGAAATGGAGACAGAGATTCTGGACTACGTG

ACGCGTACGCGGCCGCTCGAGCAGAAACTCATCTCAGAAGAGGATCTGGCAGCAAATGATATCCTGGATT
 ACAAGGATGACGACGATAAGGTTTAA

Protein Sequence:

>RC225900 representing NM_001122823
 Red=Cloning site Green=Tags(s)

MAAEAADLGLGAAPVELRRERRMVCVEYPGVVRDVAKMLPTLGEEGVSRIYADPTKRELYFRPKDPY
 CHPVCANRFSTSSLLLRIRKRRRQKGVLGTEAHSEVTFDMEILGIISTYKFGMSDFQYLAVHTEAGG
 KHTSMYDKVLMRPEKEAFFHQELPLYIPPPIFSRLDAPVDYFYRPETQHREGYNNPPISGENLIGLSRA
 RRPHNIAIFVNFEEDEVPKQPLEAAAQTWRRVCTNPVDRKVEEELRKLFDIRPIWSRNAVKANISVHPDKL
 KVLPLPIAYYMITGPWRSLWIRFGYDPRKNPDAKIYQVLDFRIRCGMKHGYAPSDLPVKAKRSTYNYSLP
 ITVKKTSQVLTMHDLKQGLGPSGTSGARKPASSKYKLVSLQTLRDSVYIFREGALPPYRQMFYQLCDL
 NVEELQKIIHRNDGAENSCTERDGLPKTSDELRTMSLMIRQTIIRSKRPALFSSSAKADGGKEQLTYE
 SGEDEDEEEEEEEEDFKPSDGSSEMETEILDYV

TRTRPLEQKLISEEDLAANDILDYKDDDDKV

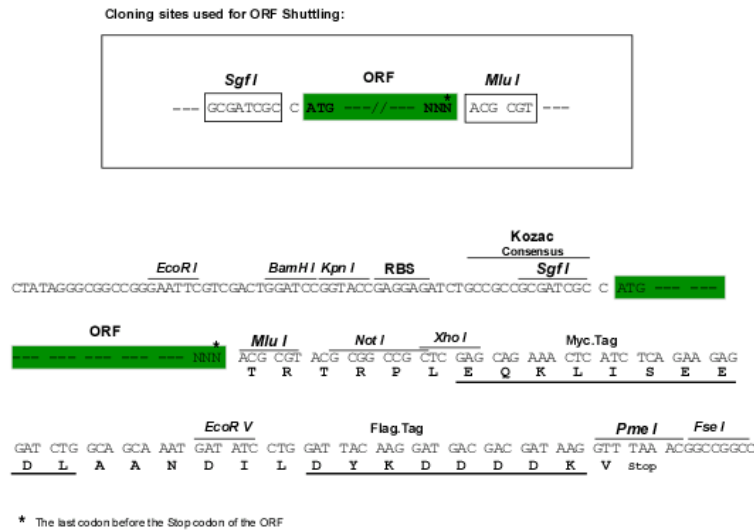
Chromatograms:

https://cdn.origene.com/chromatograms/mk8065_e08.zip

Restriction Sites:

Sgfl-Mlul

Cloning Scheme:



ACCN: NM_001122823

ORF Size: 1578 bp

OTI Disclaimer: The molecular sequence of this clone aligns with the gene accession number as a point of reference only. However, individual transcript sequences of the same gene can differ through naturally occurring variations (e.g. polymorphisms), each with its own valid existence. This clone is substantially in agreement with the reference, but a complete review of all prevailing variants is recommended prior to use. [More info](#)

OTI Annotation: This clone was engineered to express the complete ORF with an expression tag. Expression varies depending on the nature of the gene.

Components: The ORF clone is ion-exchange column purified and shipped in a 2D barcoded Matrix tube containing 10ug of transfection-ready, dried plasmid DNA (reconstitute with 100 ul of water).

Reconstitution Method:

1. Centrifuge at 5,000xg for 5min.
2. Carefully open the tube and add 100ul of sterile water to dissolve the DNA.
3. Close the tube and incubate for 10 minutes at room temperature.
4. Briefly vortex the tube and then do a quick spin (less than 5000xg) to concentrate the liquid at the bottom.
5. Store the suspended plasmid at -20°C. The DNA is stable for at least one year from date of shipping when stored at -20°C.

RefSeq: [NM_001122823.2](#)

RefSeq ORF: 1581 bp

Locus ID: 9328

UniProt ID: [Q9Y5Q8](#)

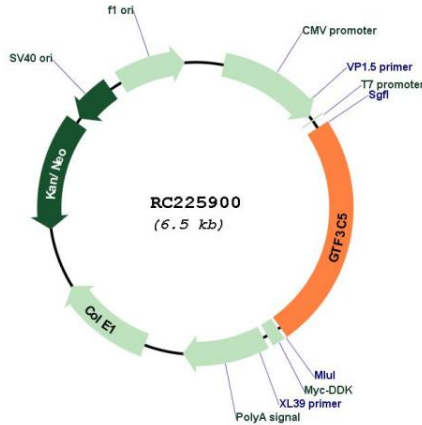
Cytogenetics: 9q34.13

Protein Families: Transcription Factors

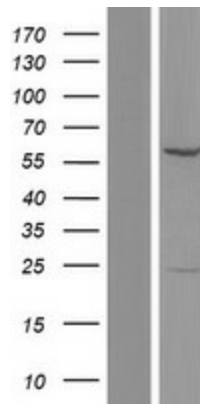
MW: 60.2 kDa

Gene Summary: Involved in RNA polymerase III-mediated transcription. Integral, tightly associated component of the DNA-binding TFIIIC2 subcomplex that directly binds tRNA and virus-associated RNA promoters.[UniProtKB/Swiss-Prot Function]

Product images:



Circular map for RC225900



Western blot validation of overexpression lysate (Cat# [LY426565]) using anti-DDK antibody (Cat# [TA50011-100]). Left: Cell lysates from untransfected HEK293T cells; Right: Cell lysates from HEK293T cells transfected with RC225900 using transfection reagent MegaTran 2.0 (Cat# [TT210002]).