

Product datasheet for **RC225899**

NCF2 (NM_001127651) Human Tagged ORF Clone

Product data:

| | |
|---------------------------|--|
| Product Type: | Expression Plasmids |
| Product Name: | NCF2 (NM_001127651) Human Tagged ORF Clone |
| Tag: | Myc-DDK |
| Symbol: | NCF2 |
| Synonyms: | NCF-2; NOXA2; P67-PHOX; P67PHOX |
| Mammalian Cell Selection: | Neomycin |
| Vector: | pCMV6-Entry (PS100001) |
| E. coli Selection: | Kanamycin (25 ug/mL) |



[View online »](#)

ORF Nucleotide Sequence:

>RC225899 representing NM_001127651
 Red=Cloning site Blue=ORF Green=Tags(s)

TTTTGTAATACGACTCACTATAGGGCGGCCGGAATTCGTCGACTGGATCCGGTACCGAGGAGATCTGCC
 GCC**CGCATCGCC**

ATGTCCTGGTGGAGCCATCAGCCTCTGGAATGAAGGGGTGCTGGCAGCGGACAAGAAGGACTGGAAGG
 GAGCCCTGGATGCCTTCACTGCGGTCCAGGACCCCACTCCCGATTGCTTCAACATTGGCTGCATGTA
 CACTATCCTGAAGAACATGACTGAAGCAGAGAAGGCCTTACCAGAAGCATTAAACCGAGACAAGCACTTG
 GCAGTGGCTTACTCCAACGAGGGATGCTCTACTACCAGACAGAGAAATATGATTTGGCTATCAAAGACC
 TTAAGAAGCCTTGATTAGCTTCGAGGGAACAGCTGATAGACTATAAGATCCTGGGGCTCCAGTTCAA
 GCTGTTTGCCTGTGAGGTGTTATATAACATTGCTTTCATGTATGCCAAGAAGGAGGAATGGAAAAAGCT
 GAAGAACAGTTAGCATTGGCCACGAGCATGAAGTCTGAGCCAGACATCCAAAAATCGACAAGGCGATGG
 AGTGTGCTGGAAGCAGAAGCTATATGAGCCAGTGGTATCCCTGTGGCAGGCTGTTTCGACCAATGA
 GAGACAAGTGGCTCAGCTGGCCAAGAAGGATTACCTAGGCAAGGCAACGGTCGTGGCATCTGTGGTGGAT
 CAAGACAGTTTCTCTGGGTTTGCCTCTGCAACCACAGGCAGCTGAGCCTCCACCCAGACCGAAAACCC
 CAGAGATCTTCAGGGCTCTGGAAGGGGAGGCTCACCGTGTGCTATTTGGGTTTGTGCCTGAGACAAAAGA
 AGAGCTCCAGGTCATGCCAGGGAACATTGTCTTTGTCTTGAAGAAGGGCAATGATAACTGGGCCACGGTC
 ATGTTCAACGGGCAGAAGGGGCTTGTCCCTGCAACTACCTTGAACCAAGTTGAGCTGCGGATCCACCCTC
 AGCAGCAGCCCCAGGAGGAAAGCTCTCCGCAGTCCGACATCCAGCTCCTCCTAGTTCCAAAGCCCTGG
 AAGACCCAGCTGTCACCAGGCCAGAAAACAAAAGAAGAGCCTAAGGAAGTGAAGCTCAGTGTCCCATG
 CCCTACACACTCAAGGTGCACTACAAGTACACGGTAGTCATGAAGACTCAGCCCGGGCTCCCTACAGCC
 AGGTCCGGGACATGGTGTCTAAGAAACTGGAGCTCCGGCTGGAACAAACTAAGCTGAGCTATCGGCCCTCG
 GGACAGCAATGAGCTGGTGGCCCTTTCAGAAGACAGCATGAAGGATGCCTGGGGCCAGGTGAAAAACTAC
 TGCTGACTCTGTGGTGTGAGAACACAGTGGGTGACCAAGGCTTTCAGATGAACCAAGGAAAGTGA
 AAGCTGATGCTAATAACAGACAACAGAACCTCAGCTTAAAGAAAGGCAGCAAGTGGAGGCACTCTTCAG
 TTATGAGGCTACCAACAGAGGACCTGGAGTTTCAGGAAGGGGATATAATCCTGGTGTATCAAAGGTG
 AATGAAGAATGGCTGGAAGGGGAGTCAAAGGGGAAAGTGGGCATTTTCCCAAAGTTTTTGTGAAGACT
 GCGCAACTACAGATTTGGAAGCACTCGGAGAGAAGTC

ACGCGTACGCGGCCGCTCGAGCAGAAACTCATCTCAGAAGAGGATCTGGCAGCAAATGATATCCTGGATT
 ACAAGGATGACGACGATAAGGTTTAA

Protein Sequence:

>RC225899 representing NM_001127651
 Red=Cloning site Green=Tags(s)

MSLVEAISLWNEGVLAADKKDWKDALDAFSAVQDPHSRIFCNIGMYTILKNMTEAEKAFTRSINRDKHL
 AVAYFQRGMLYYQTEKYDLAIKDLKEALIQLRGNQLIDYKILGLQFKLFACEVLNYIAFMYAKKEEWKKA
 EEQLALATSMKSEPRHSKIDKAMECVWKQKLYEPVVIPVGRFRPNERQVAQLAKKDYLGKATVVASVVD
 QDSFSGFAPLQPQAAEPPRPKTP EIFRALEGEAHRVLFGFVPETKEELQVMPGNIVFVLKKGNDNWATV
 MFNGQKGLVPCNYLEPVELRIHPQQPQEESSPQSDIPAPPSSKAPGRPQLSPGQKQKEEPKEVKLSVPM
 PYTLKVHYKYTVVMKTQPGLPYSQVRDMVSKLELRLEQTKLSYRPRDSNELVPLSEDSMKDAWGVQVKNY
 CLTLWCENTVGDQGFPEPKSEKADANNQTTEPQLKKGQSVEALFSYEATQPEDLEFQEGDIILVLSKV
 NEEWLEGECKGKVGIFPKVFVEDCATTDLSTREV

TRTRPLEQKLISEEDLAANDILDYKDDDDKV

Chromatograms:

https://cdn.origene.com/chromatograms/mg2417_e02.zip

Restriction Sites:

Sgfl-Mlul

Cloning Scheme:



ACCN: NM_001127651

ORF Size: 1578 bp

OTI Disclaimer: The molecular sequence of this clone aligns with the gene accession number as a point of reference only. However, individual transcript sequences of the same gene can differ through naturally occurring variations (e.g. polymorphisms), each with its own valid existence. This clone is substantially in agreement with the reference, but a complete review of all prevailing variants is recommended prior to use. [More info](#)

OTI Annotation: This clone was engineered to express the complete ORF with an expression tag. Expression varies depending on the nature of the gene.

Components: The ORF clone is ion-exchange column purified and shipped in a 2D barcoded Matrix tube containing 10ug of transfection-ready, dried plasmid DNA (reconstitute with 100 ul of water).

Reconstitution Method:

1. Centrifuge at 5,000xg for 5min.
2. Carefully open the tube and add 100ul of sterile water to dissolve the DNA.
3. Close the tube and incubate for 10 minutes at room temperature.
4. Briefly vortex the tube and then do a quick spin (less than 5000xg) to concentrate the liquid at the bottom.
5. Store the suspended plasmid at -20°C. The DNA is stable for at least one year from date of shipping when stored at -20°C.

RefSeq: [NM_001127651.3](#)

RefSeq ORF: 1581 bp

Locus ID: 4688

UniProt ID: [P19878](#)

Cytogenetics: 1q25.3

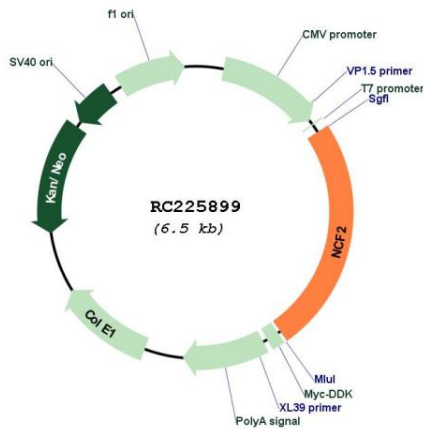
Protein Families: Druggable Genome

Protein Pathways: Leukocyte transendothelial migration

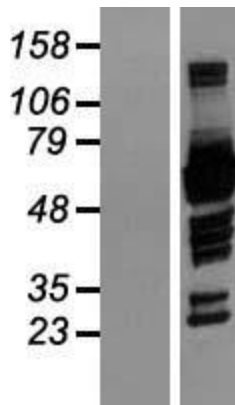
MW: 59.6 kDa

Gene Summary: This gene encodes neutrophil cytosolic factor 2, the 67-kilodalton cytosolic subunit of the multi-protein NADPH oxidase complex found in neutrophils. This oxidase produces a burst of superoxide which is delivered to the lumen of the neutrophil phagosome. Mutations in this gene, as well as in other NADPH oxidase subunits, can result in chronic granulomatous disease, a disease that causes recurrent infections by catalase-positive organisms. Alternative splicing results in multiple transcript variants encoding different isoforms. [provided by RefSeq, Jun 2010]

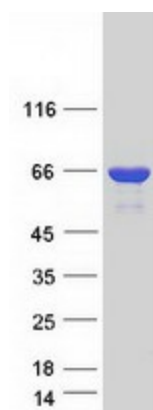
Product images:



Circular map for RC225899



Western blot validation of overexpression lysate (Cat# [LY426836]) using anti-DDK antibody (Cat# [TA50011-100]). Left: Cell lysates from untransfected HEK293T cells; Right: Cell lysates from HEK293T cells transfected with RC225899 using transfection reagent MegaTran 2.0 (Cat# [TT210002]).



Coomassie blue staining of purified NCF2 protein (Cat# [TP325899]). The protein was produced from HEK293T cells transfected with NCF2 cDNA clone (Cat# RC225899) using MegaTran 2.0 (Cat# [TT210002]).