

## Product datasheet for **RC225897**

### **CYPIVF11 (CYP4F11) (NM\_001128932) Human Tagged ORF Clone**

#### **Product data:**

Product Type:	Expression Plasmids
Product Name:	CYPIVF11 (CYP4F11) (NM_001128932) Human Tagged ORF Clone
Tag:	Myc-DDK
Symbol:	CYPIVF11
Synonyms:	CYPIVF11
Mammalian Cell Selection:	Neomycin
Vector:	pCMV6-Entry (PS100001)
E. coli Selection:	Kanamycin (25 ug/mL)



[View online »](#)

**ORF Nucleotide Sequence:**

>RC225897 ORF sequence  
 Red=Cloning site Blue=ORF Green=Tags(s)

TTTTGTAATACGACTCACTATAGGGCGGCCGGAATTCGTCGACTGGATCCGGTACCGAGGAGATCTGCC  
 GCC**CGGATCGCC**

ATGCCGACGTGAGCCTGTCTGGCTGGGCTCGGGCCCGTGGCAGCATCCCCGTGGCTGCTTCTGCTGC  
 TGGTTGGGGCTCCTGGCTCCTGGCCCGCTGGCCTGGACCTACACCTTCTATGACAACTGCCGCCG  
 CCTCCAGTGTTCCTCAACCCCGAAACAGAAGTGGTTTTGGGACACCAGGGCTGGTCACTCCACG  
 GAAGAGGGCATGAAGACATTGACCCAGCTGGTACCACATATCCCAGGGCTTTAAGTTGTGGTGGGTC  
 CTACCTTCCCCCTCCTATTTTATGCCACCCTGACATCATCCGGCCTATCACCAGTGCCTCAGCTGCTGT  
 CGCACCCAAGGATATGATTTTCTATGGCTTCTGAAGCCCTGGCTGGGGATGGGCTCCTGCTGAGTGGT  
 GGTGACAAAGTGGAGCCGCCACCGTCGGATGTTGACGCCTGCCTCCATTTCAACATCTTGAAGCCTTATA  
 TGAAGATTTTCAACAAGAGTGTGAACATCATGCACGACAAGTGGCAGCGCCTGGCCTCAGAGGGCAGCGC  
 CAGACTGGACATGTTTGAACACATCAGCCTCATGACCTTGACAGTCTGCAGAAATGTGTCTTCAGCTTT  
 GAAAGCAATTGTCAAGGAGAAGCCAGTGAATATATTGCCGCCATCTTGGAGCTCAGTGCCTTTGTAGAAA  
 AGAGAAACCAGCAGATTCTTTCACACGACTTCTGTATTATCTCACTCCTGATGGGCAGCGCTCCG  
 CAGGGCTGCCACCTGGTGCACGACTTCACAGATGCCGTATCCAGGAGCGGCCGCCACCTCCCCACT  
 CAGGGTATTGATGATTTCTCAAGAACAAGGCAAAGTCCAAGACTTTAGACTTCATTGATGTGCTTCTGC  
 TGAGCAAGGATGAAGATGGGAAGGAATTGTCTGATGAGGACATAAGAGCAGAAGCTGACACCTTCATGTT  
 TGAGGGCCATGACACTACAGCCAGTGGTCTCCTGGGCTCTATACCACCTTGAAGCAGCCAGAATAC  
 CAGGAACAGTCCCGCAAGAAGTCAAGAGCTTCTGAAGGACCGTGAACCTATAGAGATTTGAATGGGACG  
 ACCTGGCCAGCTGCCCTTCTGACCATGTGCATTAAGGAGACCTGCGGTTGCATCCCCAGTCCCGGT  
 CATCTCCCGATGTTGCACGACGACTTTGTGCTCCAGACGCGCGTCAATCCCAAGGCAATTGTCTGC  
 CTCATCAATATTATCGGGATCCATTACAACCAACTGTGTGGCCAGACCTGAGGTCTACGACCCCTTCC  
 GTTTCAACCAAGAGAACATCAAGGAGAGGTACCTCTGGCTTTTATTCCCTTCTCGGCAGGGCCAGAAA  
 CTGCATCGGGCAGGCGTTCGCCATGGCTGAGATGAAGGTGGTCTGGCGCTCACGCTGCTGCACTTCCGC  
 ATCCTGCCGACCCACACTGAACCCGCAGGAAACCCGAGCTGATATTGCGCGCAGAGGTGGACTTTGGC  
 TCGGGTGGAGCCCTGGGTGCGAACTCACAG

**ACGCGT**ACGCGGCCGCTCGAGCAGAAACTCATCTCAGAAGAGGATCTGGCAGCAAATGATATCCTGGATT  
 ACAAGGATGACGACGATAAGGTTTAA

**Protein Sequence:**

>RC225897 protein sequence  
 Red=Cloning site Green=Tags(s)

MPQLSLSWLGLGPVAASPWLLLLLVGGSWLLARVLAWTYTFYDNCRRLLQCFPPPKQNWFWGHQGLVPTP  
 EEGMKTLLTQLVTTYQGFKLWLGPTFPLLLILCHPDIIRPITSASAAPKDMIFYGFLKPWLGDLLLSG  
 GDKWSRHRMLTPAFHFNLLKPYMKIFNKSVMIMHDKWQRLASEGSARLDMFEHISLMTLDSLQKCVFSF  
 ESNCQEKPSEYIAAILELSAFVEKRNQILLHTDFLYYLPDQGRFRRACHLVHDFDVAIQERRRLLPT  
 QGIDDFLKNKAKSKTLDLFDVLLL SKDEDGKELSDIEDIRAEADTFMFEHDTTASGLSWLYHLAKHPEY  
 QEQRQEVQELLKDREPIEIEWDDLAQLPFLTMCIKESLRLHPPVPVISRCTQDFVLPDGRVIPKGI  
 VCLINIIGIHYNPTVWPDPEVYDPFRFNQENIKERSPLAFIPFSAGPRNCIGQAFAMAEMKVVLLAL  
 TLLHFRILPTHTEPRRKPELILRAEGLWLRVEPLGANSQ

**TRTRPLEQKLI**SEEDLAANDILDYKDDDDKV

**Chromatograms:**

[https://cdn.origene.com/chromatograms/mk6539\\_g10.zip](https://cdn.origene.com/chromatograms/mk6539_g10.zip)

**Restriction Sites:**

Sgfl-MluI

**Cloning Scheme:**


**ACCN:** NM\_001128932

**ORF Size:** 1572 bp

**OTI Disclaimer:** The molecular sequence of this clone aligns with the gene accession number as a point of reference only. However, individual transcript sequences of the same gene can differ through naturally occurring variations (e.g. polymorphisms), each with its own valid existence. This clone is substantially in agreement with the reference, but a complete review of all prevailing variants is recommended prior to use. [More info](#)

**OTI Annotation:** This clone was engineered to express the complete ORF with an expression tag. Expression varies depending on the nature of the gene.

**Components:** The ORF clone is ion-exchange column purified and shipped in a 2D barcoded Matrix tube containing 10ug of transfection-ready, dried plasmid DNA (reconstitute with 100 ul of water).

**Reconstitution Method:**

1. Centrifuge at 5,000xg for 5min.
2. Carefully open the tube and add 100ul of sterile water to dissolve the DNA.
3. Close the tube and incubate for 10 minutes at room temperature.
4. Briefly vortex the tube and then do a quick spin (less than 5000xg) to concentrate the liquid at the bottom.
5. Store the suspended plasmid at -20°C. The DNA is stable for at least one year from date of shipping when stored at -20°C.

**RefSeq:** [NM\\_001128932.1](#), [NP\\_001122404.1](#)

**RefSeq Size:** 2973 bp

**RefSeq ORF:** 1575 bp

**Locus ID:** 57834

**UniProt ID:** [Q9HBI6](#)

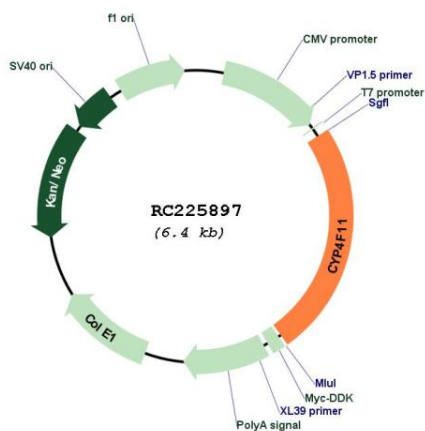
**Cytogenetics:** 19p13.12

**Protein Families:** Druggable Genome, P450, Transmembrane

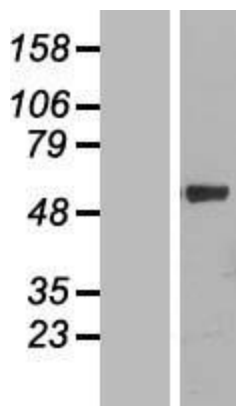
**MW:** 60.2 kDa

**Gene Summary:** This gene, CYP4F11, encodes a member of the cytochrome P450 superfamily of enzymes. The cytochrome P450 proteins are monooxygenases which catalyze many reactions involved in drug metabolism and synthesis of cholesterol, steroids and other lipids. This gene is part of a cluster of cytochrome P450 genes on chromosome 19. Another member of this family, CYP4F2, is approximately 16 kb away. Alternatively spliced transcript variants encoding the same protein have been found for this gene. [provided by RefSeq, Jul 2008]

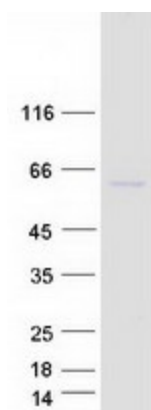
**Product images:**



Circular map for RC225897



Western blot validation of overexpression lysate (Cat# [LY427033]) using anti-DDK antibody (Cat# [TA50011-100]). Left: Cell lysates from untransfected HEK293T cells; Right: Cell lysates from HEK293T cells transfected with RC225897 using transfection reagent MegaTran 2.0 (Cat# [TT210002]).



Coomassie blue staining of purified CYP4F11 protein (Cat# [TP325897]). The protein was produced from HEK293T cells transfected with CYP4F11 cDNA clone (Cat# RC225897) using MegaTran 2.0 (Cat# [TT210002]).