

## Product datasheet for **RC225895**

### AGFG1 (NM\_001135189) Human Tagged ORF Clone

#### Product data:

Product Type:	Expression Plasmids
Product Name:	AGFG1 (NM_001135189) Human Tagged ORF Clone
Tag:	Myc-DDK
Symbol:	AGFG1
Synonyms:	HRB; RAB; RIP
Mammalian Cell Selection:	Neomycin
Vector:	pCMV6-Entry (PS100001)
E. coli Selection:	Kanamycin (25 ug/mL)



[View online »](#)

**ORF Nucleotide Sequence:**

>RC225895 representing NM\_001135189  
 Red=Cloning site Blue=ORF Green=Tags(s)

TTTTGTAATACGACTCACTATAGGGCGGCCGGGAATTCGTCGACTGGATCCGGTACCGAGGAGATCTGCC  
 GCC**CGGATCGCC**

ATGGCGGCCAGCGGAAGCGGAAGCAGGAGGAGAAGCACCTGAAGATGCTGCGGGACATGACCCGGCCTCC  
 CGCACAAACGAAAGTGTTCGACTGCGACCAGCGCGGCCACCTACGTTAACATGACGGTCGGCTCCTT  
 CGTGTGTACCTCTGCTCCGGCAGCCTGCGAGGATTAATCCACCACACAGGGTGAATCTATCTCCATG  
 ACAACATTCACACAACAGGAAATGAATCTTACAAAAACATGGAATGAAGTCTGTAACAGATTTGGC  
 TAGGATTATTTGATGATAGATCTTCAGCAATCCAGACTTCAGGGATCCACAAAAAGTAAAAGATTTCT  
 ACAAGAAAAGTATGAAAAGAAAAGATGGTATGTCCCGCCAGAACAAGCCAAAGTCGTGGCATCAGTTCAT  
 GCATCTATTTAGGGTCTCTGCCAGTAGCACAAAGCAGCACACCTGAGGTCAAACACTGAAATCTCTTT  
 TAGGGGATTCTGCACCAACTGCACCTAAATAAGGGCACACCTAGTCAGTCCCCAGTTGTAGGTCGTTT  
 TCAAGGGCAGCAGCAGGAGAAGAAGCAATTTGACCTTTAAGTGATCTCGGCTCAGACATCTTTGCTGCT  
 CCAGCTCCTCAGTCAACAGCTACAGCCAATTTGCTAACTTTGCACATTTCAACAGTCATGCAGGTGGAA  
 GTGCTGCATCAGTAAATGCTAATTTTGCTCATTTTGATAACTTCCCAAATCCTCCAGTGCATTTTGG  
 AACCTTCAATACTTCCCAGAGTCATCAAACAGCATCAGCTGTTAGTAAAGTTTCAACGAACAAAGCTGGT  
 TTACAGACTGCAGACAAATATGCAGCACTTGCTAATTTAGACAATATCTTCAGTCCCGGCAAGGTGGT  
 ATCAGGGAAGTGGCTTTGGGACCACAGGTAAAGCTCCTGTTGGTCTGTGGTTTCAGTCCCAGTCAGTC  
 AAGTGCATCTTCAGACAAGTATGCAGCTCTGGCAGAAGTAGACAGCGTTTTCAGTCTGCAGCCACTCC  
 AGTAATGCGTATACTCCACAAGTAACTAGCAGCAATGTTTTGGAACAGTCCAGTGGTTGCTTCTG  
 CACAGACACAGCCTGCTCATCAAGTGTGCTGCTCCATTTGGAGCTACGCCTTCCACAAATCCATTTGT  
 TGCTGCTGCTGGTCTTCTGTGGCATCTTCTACAAACCCATTTTCAGACCAATGCCAGAGGAGCAACAGCG  
 GCAACCTTTGGCACTGCATCCATGAGCATGCCACAGGATTCGGCACTCCTGCTCCTACAGTCTTCCCA  
 CCAGCTTTAGTGGCAGCTTTAGCAGCCTGCCTTTCCAGCCCAAGCAGCTTTCCCTCAACAGACAGCTTT  
 TTCTCAACAGCCCAATGGTGCAGGTTTTGCAGCATTTGGACAAACAAAGCCAGTAGTAACCCCTTTTGGT  
 CAAGTTGCAGCTGCTGGAGTATCTAGTAATCCTTTTATGACTGGTGCACCAACAGGACAATTTCCAACAG  
 GAAGCTCATCAACCAATCCTTTCTTA

**ACGCGT**ACGCGGCCGCTCGAGCAGAAACTCATCTCAGAAGAGGATCTGGCAGCAAATGATATCCTGGATT  
 ACAAGGATGACGACGATAAGGTTTAA

**Protein Sequence:**

>RC225895 representing NM\_001135189  
 Red=Cloning site Green=Tags(s)

MAASAKRKQEEKHLKMLRDMTGLPHNRKCFDCCQRGPTYVNMVGSFVCTSCSGSLRGLNPPHRVKSISM  
 TTFQQEIEFLQKHGNEVCKQIWLGLFDDRSAIPDFRDPQKVKEFLQEKYEKKRWYVPEQAKVVASVH  
 ASISGSSASSTSTPEVKPLKSLLGDSAPTLHLNKGTPSQSPVVGSRQGGQEKQFDLLSDLGSDIFAA  
 PAPQSTATANFANFAHFNSHAGGSAASVNFANFAHFDNFPKSSSADFGTFNTSQSHQTASAVSKVSTNKAG  
 LQTADKYAALANLDNIFSAQGQDQSGFGTTGKAPVGSVSVPSQSSASSDKYAALAE LDSVSSAATS  
 SNAYTSTSNASSNVFGTVPVVASAQTQPASSSVPAPFGATPSTNPFVAAAGPSVASSTNPFQTNARGATA  
 ATFGTASMSMPTGFGTPAPYSLPTSFSGSFQPPAFPAQAAPFQQTAFSQQPNGAGFAAFGQTKPVVTPFG  
 QVAAAGVSSNPFMTGAPTGFPTGSSSTNPFLL

**TRTRPLEQKLI**SEEDLAANDILDYKDDDDKV

**Chromatograms:**

[https://cdn.origene.com/chromatograms/mk8065\\_d01.zip](https://cdn.origene.com/chromatograms/mk8065_d01.zip)

**Restriction Sites:**

Sgfl-Mlul

**Cloning Scheme:**


**ACCN:** NM\_001135189

**ORF Size:** 1566 bp

**OTI Disclaimer:** The molecular sequence of this clone aligns with the gene accession number as a point of reference only. However, individual transcript sequences of the same gene can differ through naturally occurring variations (e.g. polymorphisms), each with its own valid existence. This clone is substantially in agreement with the reference, but a complete review of all prevailing variants is recommended prior to use. [More info](#)

**OTI Annotation:** This clone was engineered to express the complete ORF with an expression tag. Expression varies depending on the nature of the gene.

**Components:** The ORF clone is ion-exchange column purified and shipped in a 2D barcoded Matrix tube containing 10ug of transfection-ready, dried plasmid DNA (reconstitute with 100 ul of water).

**Reconstitution Method:**

1. Centrifuge at 5,000xg for 5min.
2. Carefully open the tube and add 100ul of sterile water to dissolve the DNA.
3. Close the tube and incubate for 10 minutes at room temperature.
4. Briefly vortex the tube and then do a quick spin (less than 5000xg) to concentrate the liquid at the bottom.
5. Store the suspended plasmid at -20°C. The DNA is stable for at least one year from date of shipping when stored at -20°C.

**RefSeq:** [NM\\_001135189.2](#)

**RefSeq ORF:** 1569 bp

**Locus ID:** 3267

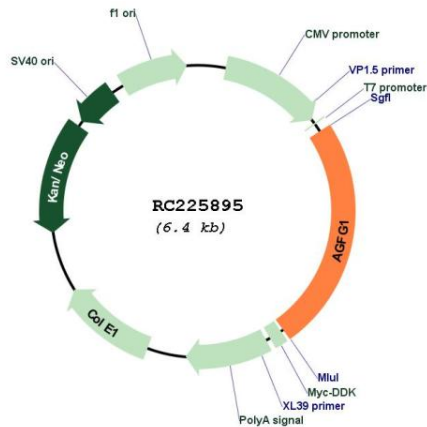
**UniProt ID:** [P52594](#)

**Cytogenetics:** 2q36.3

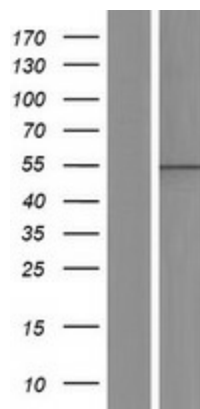
**MW:** 54 kDa

**Gene Summary:**

The protein encoded by this gene is related to nucleoporins, a class of proteins that mediate nucleocytoplasmic transport. The encoded protein binds the activation domain of the human immunodeficiency virus Rev protein when Rev is assembled onto its RNA target, and is required for the nuclear export of Rev-directed RNAs. Multiple transcript variants encoding different isoforms have been found for this gene. [provided by RefSeq, Sep 2008]

**Product images:**


Circular map for RC225895



Western blot validation of overexpression lysate (Cat# [LY427583]) using anti-DDK antibody (Cat# [TA50011-100]). Left: Cell lysates from untransfected HEK293T cells; Right: Cell lysates from HEK293T cells transfected with RC225895 using transfection reagent MegaTran 2.0 (Cat# [TT210002]).