

Product datasheet for **RC225891**

TBX22 (NM_001109878) Human Tagged ORF Clone

Product data:

Product Type:	Expression Plasmids
Product Name:	TBX22 (NM_001109878) Human Tagged ORF Clone
Tag:	Myc-DDK
Symbol:	TBX22
Synonyms:	ABERS; CLPA; CPX; dj795G23.1; TBXX
Mammalian Cell Selection:	Neomycin
Vector:	pCMV6-Entry (PS100001)
E. coli Selection:	Kanamycin (25 ug/mL)



[View online »](#)

ORF Nucleotide Sequence:

>RC225891 ORF sequence
 Red=Cloning site Blue=ORF Green=Tags(s)

TTTTGTAATACGACTCACTATAGGGCGGCCGGAATTCGTCGACTGGATCCGGTACCGAGGAGATCTGCC
 GCC**CGCATCGCC**

ATGGCTCTGAGCTCTCGGGCGCTGCCTTCTCCGTGGAAGCCTTGGTGGGGAGACCAGCAAAGAAAAC
 TCCAAGACCCAATACAGGCGGAGCAGCCTGAGCTGCGGGAGAAAAAGGGCGGAGAGGAAGAGGAGAGAG
 AAGGAGCAGCGCTGCAGGGAAGAGCGAGCCGCTTGAAAAACAACCTAAGACAGAGCCCTCAACATCTGCT
 TCCTCTGGCTGCGGCAGCGACAGCGGCTACGGCAACAGCTCTGAAAGTCTGGAAGAGAAAGATATTCAAA
 TGGAGCTTCAAGGATCTGAACTGTGAAAAAGTCCATGACATCGGGACTGAGATGATCATTACTAAAGC
 GGGCAGGCGGATGTTCCCTCTGTTGCGGTCAAGGTGAAAGGTTGGATCCAGGGAAGCAGTACCATGTG
 GCCATCGATGTGGTGCCGGTGGATTCAAACGCTATAGGTACGTCTATCACAGCTCACAGTGGATGGTAG
 CTGGGAATACAGACCATTGTGCATCATTCTAGATTCTATGTTACCCGGACTCACCTGCTCGGGAGA
 GACCTGGATGCGGCAGATCATCAGCTTTGATCGCATGAAACTCACCAACAATGAGATGGATGACAAAGGC
 CACATCATTCTGCAATCCATGCATAAGTACAAACCCCGAGTGCACGTGATAGAGCAAGGCAGCAGTGTG
 ACCTGTCCAGATTCAAGTCTTGCCCACTGAAGGTGTTAAAACATTCTCCTTTAAAGAACTGAGTTCAC
 CACAGTAACGGCTTACAAAACCAACAGATTACGAAACTAAAAATAGAAAGAAATCCTTTTGCTAAAGGA
 TTTAGAGATACTGGAAGAAAACAGGGGTGATTGGATGGGCTTTTAGAGACCTACCCATGGAGGCCTTCTT
 TCACTCTCGATTTTAAAACCTTTGGCGCAGACACAAAAGTGAAGCAGTGGCTCATCTCCAGTGACCTC
 TAGTGGAGGGGCCCTCTCCTTTGAACTCCTTACTTTCTCCACTTTGCTTTTACCATATGTTTCATTTA
 CCTACAAGCTCCCTTGAATGCCCTGTCCAGAGGCATACCTGCCCAATGTCAACCTGCCTCTATGCTACA
 AGATTTGTCCAATAATTTTGGCAACAGCAACCTCTTGTTTTACCGGCTCCTGAAAGACTAGCAAGCAG
 CAACAGTTCTCAGTCTTTAGCCCACTCATGATGGAAGTGCCATGTTATCTTCCCTGGGGTCAACCAAT
 TCAAAAAGCGGTTTCTGAAAGTCCAGTGTAGTATCTACAAGCACCTAATTCTACCAATCAATGT
 TATATGGATTACAGTACCTGGAATAATTTTCTGCCAACTCCATCACCCAGAAAGCACTTAGTTGCTC
 CTTTCATCCTTCTATGACTTTTATAGATAACAATTTCTCTATGCCATCTAGACTGATAAGTGTTTCAAC
 CATCTTAAAGTGAATGACGACAGTCAAGTTTCTTTGGAGAAGGCAAATGTAATCATGTTTATTGTTATC
 CAGCAATTAACCATTACCTT

ACGCGTACGCGGCCGCTCGAGCAGAACTCATCTCAGAAGAGGATCTGGCAGCAAATGATATCCTGGATT
 ACAAGGATGACGACGATAAGGTTTAA

Protein Sequence:

>RC225891 protein sequence
 Red=Cloning site Green=Tags(s)

MALSSRARAFSVEALVGRPSKRKLQDPIQAEQPELREKKGEEEEERRSSAAGKSEPLEKQPKTEPSTSA
 SSGCGSDSGYGNSSLEEKDIQMEIQSELWKRFDHIGTEMIITKAGRRMFPSVRVKVGLDGPQYHV
 AIDVVPVDSKRYRYVYHSSQWMVAGNTDHLCIIPRFYVHPDSPCSGETWMRQIISFDRMKLTNNEMDK
 HIILQSMHKYKPRVHVIEQGSSVDLSQIQSLPTEGVKTFSEKETEFTTAYQNQQITKLKIERNPFAK
 FRDTGRNRGVLGDLLETYPWRPFTLDFKTFGADTQSGSSGSPVTSSGGAPSPLNSLLSPLCFSPMFL
 PTSSLGMPCEAYLPNVNPLCYKICPTNFWQQPLVLPAPERLASSNSSQLAPLMMEVPMSSLGVTN
 SKSGSSEDSSDQYLQAPNSTNQMLYGLQSPGNIFLPNSITPEALSCSFHPSYDFRYNFSMP SRLISGSN
 HLKVNDDSQVSFGEKCNHVHWYPAINHYL

TRTRPLEQKLISEEDLAANDILDYKDDDDKV

Chromatograms:

https://cdn.origene.com/chromatograms/mk6567_g01.zip

Restriction Sites:

Sgfl-Mlul

Cloning Scheme:


ACCN: NM_001109878

ORF Size: 1560 bp

OTI Disclaimer: The molecular sequence of this clone aligns with the gene accession number as a point of reference only. However, individual transcript sequences of the same gene can differ through naturally occurring variations (e.g. polymorphisms), each with its own valid existence. This clone is substantially in agreement with the reference, but a complete review of all prevailing variants is recommended prior to use. [More info](#)

OTI Annotation: This clone was engineered to express the complete ORF with an expression tag. Expression varies depending on the nature of the gene.

Components: The ORF clone is ion-exchange column purified and shipped in a 2D barcoded Matrix tube containing 10ug of transfection-ready, dried plasmid DNA (reconstitute with 100 ul of water).

- Reconstitution Method:**
1. Centrifuge at 5,000xg for 5min.
 2. Carefully open the tube and add 100ul of sterile water to dissolve the DNA.
 3. Close the tube and incubate for 10 minutes at room temperature.
 4. Briefly vortex the tube and then do a quick spin (less than 5000xg) to concentrate the liquid at the bottom.
 5. Store the suspended plasmid at -20°C. The DNA is stable for at least one year from date of shipping when stored at -20°C.

RefSeq: [NM_001109878.2](#)

RefSeq Size: 2355 bp

RefSeq ORF: 1563 bp

Locus ID: 50945

UniProt ID: [Q9Y458](#)

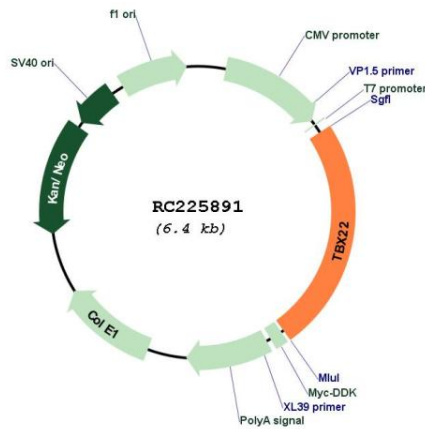
Cytogenetics: Xq21.1

Protein Families: Transcription Factors

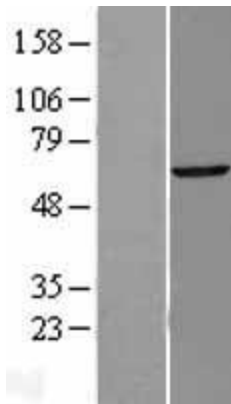
MW: 57.9 kDa

Gene Summary: This gene is a member of a phylogenetically conserved family of genes that share a common DNA-binding domain, the T-box. T-box genes encode transcription factors involved in the regulation of developmental processes. Mutations in this gene have been associated with the inherited X-linked disorder, Cleft palate with ankyloglossia, and it is believed to play a major role in human palatogenesis. Alternatively spliced transcript variants encoding different isoforms have been found for this gene. [provided by RefSeq, Jul 2008]

Product images:



Circular map for RC225891



Western blot validation of overexpression lysate (Cat# [LY426305]) using anti-DDK antibody (Cat# [TA50011-100]). Left: Cell lysates from untransfected HEK293T cells; Right: Cell lysates from HEK293T cells transfected with RC225891 using transfection reagent MegaTran 2.0 (Cat# [TT210002]).