

## Product datasheet for **RC225878**

### Nuclear Factor 1 (NFIA) (NM\_001134673) Human Tagged ORF Clone

#### Product data:

Product Type:	Expression Plasmids
Product Name:	Nuclear Factor 1 (NFIA) (NM_001134673) Human Tagged ORF Clone
Tag:	Myc-DDK
Symbol:	Nuclear Factor 1
Synonyms:	BRMUTD; CTF; NF-I/A; NF1-A; NFI-A; NFI-L
Mammalian Cell Selection:	Neomycin
Vector:	pCMV6-Entry (PS100001)
E. coli Selection:	Kanamycin (25 ug/mL)



[View online »](#)

**ORF Nucleotide Sequence:**

>RC225878 representing NM\_001134673  
 Red=Cloning site Blue=ORF Green=Tags(s)

TTTTGTAATACGACTCACTATAGGGCGGCCGGAATTCGTCGACTGGATCCGGTACCGAGGAGATCTGCC  
 GCC**CGGATCGCC**

ATGTATTCTCGCTCTGTCTCACCCAGGATGAATTTTCATCCTTTTCATCGAAGCACTTCTGCCCCAGTGCC  
 GAGCCTTTGCCTACACATGGTTCAACCTGCAGGCCGAAAACGAAAATACTTCAAAAAACATGAAAAGCG  
 TATGTCAAAGAAGAAGAGAGAGCCGTGAAGGATGAATTGCTAAGTGAAAAACAGAGGTCAAGCAGAAG  
 TGGGCATCTCGACTTCTGGCAAAGTTGCGGAAAGATATCCGACCCGAATATCGAGAGGATTTTGTCTTA  
 CAGTTACAGGGAAAAACCTCCATGTTGTGTTCTTTCCAACCCAGACCAGAAAAGGCAAGATGCGAAGAAT  
 TGACTGCCTCCGCCAGGCAGATAAAGTCTGGAGGTTGGACCTTGTATGGTGATTTTGTAAAGGTATT  
 CCGCTGGAAGTACTGATGGCGAGCGCCTGTAAAGTCCCACAATGCTCTAATCCAGGGCTCTGTGTCC  
 AACCCCATCACATAGGGGTTTCTGTTAAGGAAGCTGATTTATATTTGGCATACTTTGTGCATGCAGCAGA  
 TTCAAGTCAATCTGAAAGTCCCAGCCAGCCAAGTACGCTGACATTAAGGACCAGCCAGAAAATGGACAT  
 TTGGGCTTCCAGGACAGTTTTGTACATCAGGTGTTTTAGTGTCAGTACTGAGTAGTAAGAGTGTCACAGA  
 CACCAATAGTGCAGGAAGTGGCCAAAATTTTCTCTCTCAGATTTGGAAAGTTCTTCACTACAGCAT  
 GAGTCCAGGAGCAATGAGGAGGCTTTTACCCAGCACATCTCTACGAGCTCCACAAGCGCCTCAAGTCT  
 GTGGAGGATGAAATGGACAGTCTTGGTGAAGGAGCCATTTATACAGGCCAAGGGCGCTCCCAGGAAGTG  
 GCAGTCAGTCAAGTGGATGGCATGAAGTGGAGCCAGGAATGCCATCTCCAACCACACTGAAGAAGTCGGA  
 GAAGTCTGGTTTACAGCAGCCCCCTCCCTTACAGACCTCCTCCCTGGGAACGGCGTTACACAGCATCAC  
 CGACCTGTCAATTACAGGACCCAGAGCAAGTCCGCATGCAACACCATCGACTCTTCATTTCCCGACATCAC  
 CCATTATCCAGCAGCCTGGGCCCTACTTCTCACACCCAGCCATCCGCTATCACCCAGGAGCGCTGAA  
 AGAATTTGTCCAACCTGTCTGCCCTGATGCTGGTCAAGCAGGCTGGACAGGTGGGGTTCTCAATCCAAT  
 GGGAGCAGCCAAGGCAAGGTGCACAACCCATTCCTTCCACCCCAATGTTGCCACCGCCACCGCCACCAC  
 CGATGGCCAGGCCTGTGCCTCTGCCGTGCCAGACACAAAGCCTCCAACCACGTCAACAGAAGGAGGTGC  
 AGCCTCCCCACGTCACCAACCTACTCGACACCCAGCACCTCCCCGCAAACCGATTCTGTCAGTGTGGA  
 CCACGGGATCCAAGCTTTGTAATATCCCTCAACAGACACAGTCTGGTACCTGGGA

**ACGGTACGGCGCGCTCGAGCAGAACTCATCTCAGAAGAGGATCTGGCAGCAATGATATCCTGGATT**  
**ACAAGGATGACGACGATAAGGTTTAA**

**Protein Sequence:**

>RC225878 representing NM\_001134673  
 Red=Cloning site Green=Tags(s)

MYSPLCLTQDEFHPFIEALLPHVRAFAYTWFNLQARKRKYFKKHEKRMSKEEERAVKDELLSEKPEVKQK  
 WASRLLAKLRKDIRPEYREDFVLTVTGKKPPCCVLSNPQKQKMRRIDCLRQADKVRDLVIMVILFKGI  
 PLESTDGERLVKSPQCSNPGLCVQPHHIGVSVKELDLYLAYFVHAADSSQSESPSPSDADIKDQPENH  
 LGFQDSFVTSGVFSVTELVVRSQTPIAAGTGPNFSLSDLESSSYMSPGAMRRSLPSTSTSTKRLKS  
 VEDEMDSPEEPFYTGQGRSPGSGSQSSGWHEVEPGMPSPTTLKSEKSGFSSPSPSQTSSLGTAFTQHH  
 RPVITGPRASPHATPSTLHFPTSPIIQPGPYFSHPAIRYHPQETLKEFVQLVCPDAGQQAGQVGFNLNP  
 GSSQGVHNPFLPTPMLPPPPPPMARPVPLPVPDTKPPTTSTEGGAASPTSTYSPSTSPANRFVSVG  
 PRDPSFVNIPQQTQSWYLG

**TRTRPLEQKLISEEDLAANDILDYKDDDDKV**

**Chromatograms:**

[https://cdn.origene.com/chromatograms/mg4572\\_f01.zip](https://cdn.origene.com/chromatograms/mg4572_f01.zip)

**Restriction Sites:**

SgfI-MluI

Cloning Scheme:



ACCN: NM\_001134673

ORF Size: 1527 bp

OTI Disclaimer: Due to the inherent nature of this plasmid, standard methods to replicate additional amounts of DNA in E. coli are highly likely to result in mutations and/or rearrangements. Therefore, OriGene does not guarantee the capability to replicate this plasmid DNA. Additional amounts of DNA can be purchased from OriGene with batch-specific, full-sequence verification at a reduced cost. Please contact our customer care team at [custsupport@origene.com](mailto:custsupport@origene.com) or by calling 301.340.3188 option 3 for pricing and delivery.

The molecular sequence of this clone aligns with the gene accession number as a point of reference only. However, individual transcript sequences of the same gene can differ through naturally occurring variations (e.g. polymorphisms), each with its own valid existence. This clone is substantially in agreement with the reference, but a complete review of all prevailing variants is recommended prior to use. [More info](#)

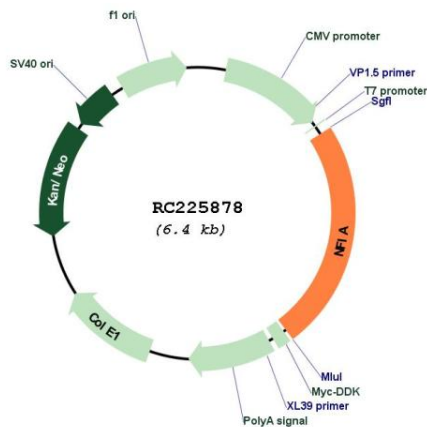
OTI Annotation: This clone was engineered to express the complete ORF with an expression tag. Expression varies depending on the nature of the gene.

Components: The ORF clone is ion-exchange column purified and shipped in a 2D barcoded Matrix tube containing 10ug of transfection-ready, dried plasmid DNA (reconstitute with 100 ul of water).

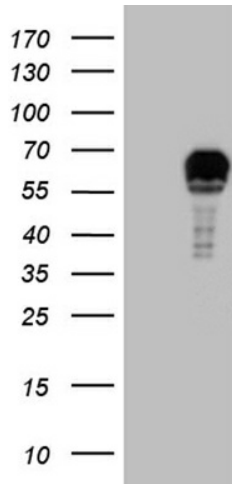
- Reconstitution Method:
1. Centrifuge at 5,000xg for 5min.
  2. Carefully open the tube and add 100ul of sterile water to dissolve the DNA.
  3. Close the tube and incubate for 10 minutes at room temperature.
  4. Briefly vortex the tube and then do a quick spin (less than 5000xg) to concentrate the liquid at the bottom.
  5. Store the suspended plasmid at -20°C. The DNA is stable for at least one year from date of shipping when stored at -20°C.

<b>Note:</b>	Plasmids are not sterile. For experiments where strict sterility is required, filtration with 0.22um filter is required.
<b>RefSeq:</b>	<a href="#">NM_001134673.4</a>
<b>RefSeq ORF:</b>	1530 bp
<b>Locus ID:</b>	4774
<b>UniProt ID:</b>	<a href="#">Q12857</a>
<b>Cytogenetics:</b>	1p31.3
<b>Protein Families:</b>	Transcription Factors
<b>MW:</b>	55.8 kDa
<b>Gene Summary:</b>	This gene encodes a member of the NF1 (nuclear factor 1) family of transcription factors. Multiple transcript variants encoding different isoforms have been found for this gene. [provided by RefSeq, Sep 2011]

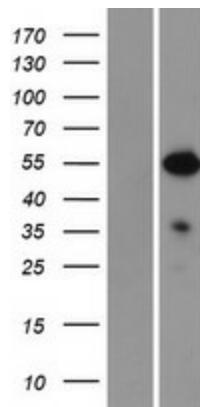
**Product images:**



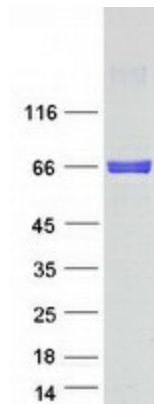
Circular map for RC225878



HEK293T cells were transfected with the pCMV6-ENTRY control (Cat# [PS100001], Left lane) or pCMV6-ENTRY NFIA (Cat# RC225878, Right lane) cDNA for 48 hrs and lysed. Equivalent amounts of cell lysates (5 ug per lane) were separated by SDS-PAGE and immunoblotted with anti-NFIA (Cat# [TA811199])(1:2000). Positive lysates [LY427477] (100ug) and [LC427477] (20ug) can be purchased separately from OriGene.



Western blot validation of overexpression lysate (Cat# [LY427477]) using anti-DDK antibody (Cat# [TA50011-100]). Left: Cell lysates from untransfected HEK293T cells; Right: Cell lysates from HEK293T cells transfected with RC225878 using transfection reagent MegaTran 2.0 (Cat# [TT210002]).



Coomassie blue staining of purified NFIA protein (Cat# [TP325878]). The protein was produced from HEK293T cells transfected with NFIA cDNA clone (Cat# RC225878) using MegaTran 2.0 (Cat# [TT210002]).