

Product datasheet for **RC225871**

THUMPD3 (NM_001114092) Human Tagged ORF Clone

Product data:

Product Type:	Expression Plasmids
Product Name:	THUMPD3 (NM_001114092) Human Tagged ORF Clone
Tag:	Myc-DDK
Symbol:	THUMPD3
Mammalian Cell Selection:	Neomycin
Vector:	pCMV6-Entry (PS100001)
E. coli Selection:	Kanamycin (25 ug/mL)



[View online »](#)

ORF Nucleotide Sequence:

>RC225871 ORF sequence
 Red=Cloning site Blue=ORF Green=Tags(s)

TTTTGTAATACGACTCACTATAGGGCGGCCGGGAATTCGTCGACTGGATCCGGTACCGAGGAGATCTGCC
 GCC**CGGATCGCC**

ATGTGTGACATTGAAGAAGCCACTAACCAACTCCTAGATGTGAACCTTCATGAGAACCAGAAGTCTGTAC
 AAGTGACAGAAAGCGACCTCGGAAGTGAATCTGAGCTTCTAGTCACTATTGGAGCCACTGTACCTACTGG
 CTTTGAGCAAACAGCTGCAGATGAAGTCAGAGAGAACTTGGGTCATCATGCAAAATCAGCAGAGACCGT
 GGCAAGATATATTTTGTCAATTCAGTGGAAAGTCTGGCACAGGTTCAATGTCTGAGATCAGTTGATAACT
 TATTTGTGGTGGTTCAGGAGTTTCAAGATTACCAGTTCAAACAAACAAAGGAAGAAGTTCTAAAGGATTT
 TGAAGACTTGGCTGAAAACTCCATGGTCAAACCCCTTAAAAGTGTGAAAAATTAATGCCAGTTTTAAA
 AAGAAAAAGCAAAGCGCAAAAAGATAAATCAGAATTCAAGTAAAGAGAAGATTAATAATGGACAAGAAG
 TCAAAATCGATCAGAGAAATGTTAAAAAGAGTTCAGTACCCATGCTTTAGATTCTCATATCTTAGATTA
 TTATGAAAATCCAGCCATCAAAGAGGATGTATCAACATTAATAGGTGATGATTTGGCATCTTGCAAAGAT
 GAGACTGATGAAAGCTCAAAGAAGAACTGAGCCTCAAGTGTGAAGTTTAGAGTCACATGCAACAGGG
 CAGGAGAGAAACATTGCTTTACCTCAAATGAGGCTGCAAGAGATTTTGGGGGTGCTGTTCAAGATTTT
 TAAGTGAAGGCCGACATGACCAACTTTGATGTGGAGGTTCTTTTGAACATCCATGATAATGAAGTCATT
 GTGGGCATTGCATTGACTGAAGAGAGTCTCCACCGAAGAAATAAACACATTTTGGACCTACAACCTTTA
 GATCAACTCTTGCTATGGGATGCTCAGGCTCTGTGATCCTCTACCTTATGATATAATAGTCGATCCAAT
 GTGTGAACTGGGCAATACCAATAGAGGGGCCACTGAATGGTCTGACTGCTCCATATTGCTGGTGAT
 AATAATCCACTGGCTGTGAATAGAGCAGCAAATAACATTGCATCTTTATTGACCAAGAGCCAAATTAAG
 AAGCAAACCTCCTGGGCTTGCCCATAGATGCTGTTCAAGTGGGATATCTGCAATCTGCCATTGAGAAC
 TGGCTCTGTGGATATTATTGTAACAGATTTGCCATTTGGAAAAAGGATGGGATCCAAGAAAAAGAACTGG
 AACCTTTATCCAGCTTGCTACGGGAGATGAGCCGTGTCTGCACACCTACCACAGGCCGAGCTGTACTAC
 TTAACAAGACAAAAATGCTTTACCAAGGCGTTATCTGGAATGCGACACGTATGGCGAAAGGTGGATAC
 AGTCTGGGTGAACGTTGGTGTCTCGTCTGCAGTTTACGTTCTGATACGTACACCTCAAGCTTTTGT
 CATCTTCAGAACAGACGGAGAAAGAGGAACCTTTGGCAATGCAAAGAA

ACGCGTACGCGGCCGCTCGAGCAGAAACTCATCTCAGAAGAGGATCTGGCAGCAAATGATATCCTGGATT
 ACAAGGATGACGACGATAAGGTTTAA

Protein Sequence:

>RC225871 protein sequence
 Red=Cloning site Green=Tags(s)

MCDIEEATNQLLDVNLHENQKSVQVTESDLGSESELLVTIGATVPTGFEQTAADDEVREKLGSSCKISRDR
 GKIFYVISVESLAQVHCLRSVDNLFVVVQEFQDYQFKQTKEEVLKDFEDLAGKLPWSNPLKVKWIKINAFK
 KKKAKRKKINQNSKEKINNGQEVKIDQRNVKKEFTSHALDSHILDYENPAIKEDVSTLIGDDLASCKD
 ETDESSKEETEPQVLKFRVTCNRAGEKHCFTSNEAARDFGGAVQDYFKWKADMTNFDVEVLLNIHDNEVI
 VGIALTEESLHRRNITHFGPTTLRSTLAYGMLRLCDPLPYDIIIVDPMCGTGAIPIEGATEWSDCFHIAGD
 NNPLAVNRAANNIASLLTKSQIKEGKPSWGLPIDAVQWDICNPLRGTGSDIIVTDLPFGKRMGSKKRNW
 NLYPAACLREMSRVCTPTTGRAVLLTQDTKCFKALSGMRHVWRKVDTVVWVNGGLRAAVVYLIRTPQAFV
 HPSEQDGERGTLWQCKE

TRTRPLEQKLISEEDLAANDILDYKDDDDKV

Chromatograms:

https://cdn.origene.com/chromatograms/mk6388_e07.zip

Restriction Sites:

Sgfl-MluI

Cloning Scheme:


ACCN: NM_001114092

ORF Size: 1521 bp

OTI Disclaimer: The molecular sequence of this clone aligns with the gene accession number as a point of reference only. However, individual transcript sequences of the same gene can differ through naturally occurring variations (e.g. polymorphisms), each with its own valid existence. This clone is substantially in agreement with the reference, but a complete review of all prevailing variants is recommended prior to use. [More info](#)

OTI Annotation: This clone was engineered to express the complete ORF with an expression tag. Expression varies depending on the nature of the gene.

Components: The ORF clone is ion-exchange column purified and shipped in a 2D barcoded Matrix tube containing 10ug of transfection-ready, dried plasmid DNA (reconstitute with 100 ul of water).

Reconstitution Method:

1. Centrifuge at 5,000xg for 5min.
2. Carefully open the tube and add 100ul of sterile water to dissolve the DNA.
3. Close the tube and incubate for 10 minutes at room temperature.
4. Briefly vortex the tube and then do a quick spin (less than 5000xg) to concentrate the liquid at the bottom.
5. Store the suspended plasmid at -20°C. The DNA is stable for at least one year from date of shipping when stored at -20°C.

Note: Plasmids are not sterile. For experiments where strict sterility is required, filtration with 0.22um filter is required.

RefSeq: [NM_001114092.1](#), [NP_001107564.1](#)

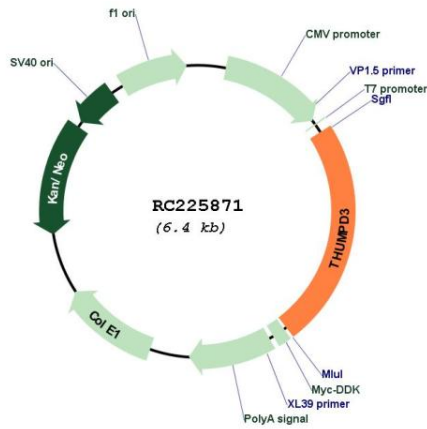
RefSeq Size: 3775 bp

RefSeq ORF: 1524 bp

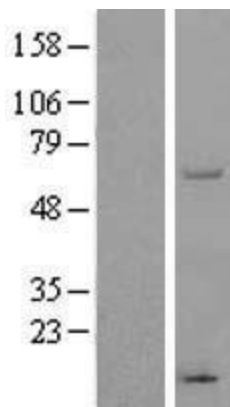
Locus ID: 25917

UniProt ID: [Q9BV44](#)
 Cytogenetics: 3p25.3
 MW: 57 kDa

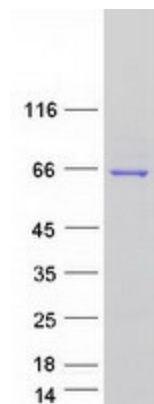
Product images:



Circular map for RC225871



Western blot validation of overexpression lysate (Cat# [LY426446]) using anti-DDK antibody (Cat# [TA50011-100]). Left: Cell lysates from untransfected HEK293T cells; Right: Cell lysates from HEK293T cells transfected with RC225871 using transfection reagent MegaTran 2.0 (Cat# [TT210002]).



Coomassie blue staining of purified THUMPD3 protein (Cat# [TP325871]). The protein was produced from HEK293T cells transfected with THUMPD3 cDNA clone (Cat# RC225871) using MegaTran 2.0 (Cat# [TT210002]).