

Product datasheet for **RC225866**

Upstream Binding Protein 1 (UBP1) (NM_001128160) Human Tagged ORF Clone

Product data:

Product Type:	Expression Plasmids
Product Name:	Upstream Binding Protein 1 (UBP1) (NM_001128160) Human Tagged ORF Clone
Tag:	Myc-DDK
Symbol:	Upstream Binding Protein 1
Synonyms:	LBP-1a; LBP-1B; LBP1A; LBP1B
Mammalian Cell Selection:	Neomycin
Vector:	pCMV6-Entry (PS100001)
E. coli Selection:	Kanamycin (25 ug/mL)



[View online »](#)

ORF Nucleotide Sequence:

>RC225866 representing NM_001128160
 Red=Cloning site Blue=ORF Green=Tags(s)

TTTTGTAATACGACTCACTATAGGGCGGCCGGAATTCGTCGACTGGATCCGGTACCGAGGAGATCTGCC
 GCCCGCATCGCC

ATGGCCTGGGTGCTCAAGATGGACGAGGTGATCGAGTCCGGGCTGGTGCACGACTTCGACGCCAGCCTCT
 CGGGCATCGGGCAGGAAC TGGGCCCGGCGCTTACAGCATGAGTATGTCTTGGCATTGCCATTTTCAA
 GCAGGAAGATTCCAGCCTTCCATTGGATGGTGAACAGAGCACCCACCCTTTCAGTATGTGATGTGTGCT
 GCAACGTCACCAGCAGTAAAAC TGCATGATGAAACGCTTACTTATTTGAACCAAGGTCAGTCATATGAAA
 TTCGGATGCTGGATAATCGGAAAATGGGTGATATGCCTGAGATCAATGGAAAATTAGTAAAGAGCATCAT
 AAGGGTTGTATTCCATGACAGACGGCTACAATACACAGAGCATCAGCAACTTGAAGGATGGAAGTGAAT
 CGCCAGGAGACAGACTTCTTGATTTAGATATTCCAATGTCTGTGGGAATAATTGACACAAGGACGAATC
 CAAGCCAGTTAAATGCGGTTGAATTTCTGTGGGACCCAGCAAAACGCACCTCTGCTTTCATTGAGTACA
 CTGCATCAGCACAGAATTTACTCCAGGAAGCAGGAGGTGAAAAGGGAGTGCCCTTTAGGATCCAGGTT
 GACACCTTAAAGCAGAATGAAAATGGAGAATACACAGATCATCTACACTAGCTAGCTGCCAAATCAAAG
 TTTTAAAGCCTAAAGGTGACAGACAGGAAACAAAAAAGTACCCGAGAGAAGATGGAGAAGAGAACAGCTCA
 TGAAAAAGAAAAGTATCAGCCGCTCTATGATACCAATCCTCACAGAGTGTCTCCGTGGCCCGATGCC
 CCCACAGCCTATGTGAATAACAGCCCTTCCCAGCGCCCACTTTACCTCCCACAGCAGAGCACTTGCA
 GTGTCCCAGACAGCAATCTTCTTCCCAAAATCATCAGGGAGATGGAGCTTACAGACCTCTGGTGAACA
 AATTCAGCCTTCAGCTACGATCCAGGAAACACAGCAATGGCTGCTCAAAAACAGATTCTCTTCTACACA
 AGACTGTTCTCTAATTTTCAGGTGCCGACTTATTAAGTCAAGGTCGTTAGACCCGTTAAACCATCTA
 GTGCAGCCGATGGAATTCGGCTCTAATTCACCTGAAAGTCAAGGTCGTTAGACCCGTTAAACCATCTA
 TGTCTGCCGGGAGCAGCCAAGCAGCACAGTGTGCAAGGGCAGCAGCAAGCTGCAAGCAGTGAAGCGGAG
 AATGGCAGTGGGGCACCCATGTTTATCATGCAATCTACTTGAAGAAATGATTGCCTCAGAAGTTGCTC
 GAAAACCTGCGCTGGTGTAAATATCCCTCTCCACCAAATTAATCAGGTTTACAGACAGGTTCCACCGG
 TATTCACATTCTGTTAGTGATCAGATGGTTCAGAATTTCAAGATGAGAGTTGTTTTTTATTCTCCACA
 GTAAAAGCTGAAAGTAGTGATGGCATCCACATAATTTTGAAG

ACCGGTACGCGGCCGCTCGAGCAGAAACTCATCTCAGAAGAGGATCTGGCAGCAATGATATCCTGGATT
 ACAAGGATGACGACGATAAGGTTTAA

Protein Sequence:

>RC225866 representing NM_001128160
 Red=Cloning site Green=Tags(s)

MAWVLKMDEVIESGLVHDFDASLSGIGQELGAGAYSMSDVLALPIFKQEDSSLPLDGETEHPPFQYVMCA
 ATSPAVKLHDETLTYLNQGQSYEIRMLDNRKMGDMPEINGKLVKSIIRVVFHRRRLQYTEHQLEGWKWN
 RPDRLDLDIPMSVGIIDTRTNPSQLNAVEFLWPAKRTSAFIQVHCISTEFTPRKHGGEKGVFPRIQV
 DTFKQNGEYTDHLHSASCQIKVFKPKGADRKQKTDREKMEKRTAHEKEKYQPSYDITLTECSPWPA
 PTAYVNNSPSPAPTFTSPQQSTCSVPDSNSSSPNHQGDGASQTSGEIQPSATIQUWLLKNRFSST
 RLFNFSGADLLKTKEDLVQICGAADGIRLYNSLKSRSVPRPRTIYVCREQPSSTVLQGGQQAASSASE
 NGSAPYVYHAIYLEEMIASEVARKLALVFNIPLHQINQVYRQGPTEIHLVSDQMVQNFQDESCFLFST
 VKAESDGIHIIILK

TRTRPLEQKLI SEEDLAANDILDYKDDDDKV

Chromatograms:

https://cdn.origene.com/chromatograms/mk8064_a01.zip

Restriction Sites:

SgfI-MluI

Cloning Scheme:


ACCN: NM_001128160

ORF Size: 1512 bp

OTI Disclaimer: The molecular sequence of this clone aligns with the gene accession number as a point of reference only. However, individual transcript sequences of the same gene can differ through naturally occurring variations (e.g. polymorphisms), each with its own valid existence. This clone is substantially in agreement with the reference, but a complete review of all prevailing variants is recommended prior to use. [More info](#)

OTI Annotation: This clone was engineered to express the complete ORF with an expression tag. Expression varies depending on the nature of the gene.

Components: The ORF clone is ion-exchange column purified and shipped in a 2D barcoded Matrix tube containing 10ug of transfection-ready, dried plasmid DNA (reconstitute with 100 ul of water).

Reconstitution Method:

1. Centrifuge at 5,000xg for 5min.
2. Carefully open the tube and add 100ul of sterile water to dissolve the DNA.
3. Close the tube and incubate for 10 minutes at room temperature.
4. Briefly vortex the tube and then do a quick spin (less than 5000xg) to concentrate the liquid at the bottom.
5. Store the suspended plasmid at -20°C. The DNA is stable for at least one year from date of shipping when stored at -20°C.

RefSeq: [NM_001128160.1](#), [NP_001121632.1](#)

RefSeq ORF: 1515 bp

Locus ID: 7342

UniProt ID: [Q9NZI7](#)

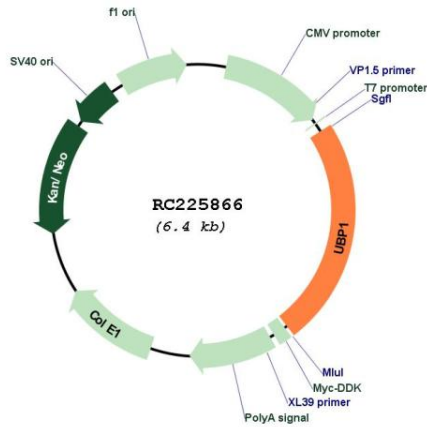
Cytogenetics: 3p22.3

Protein Families: Transcription Factors

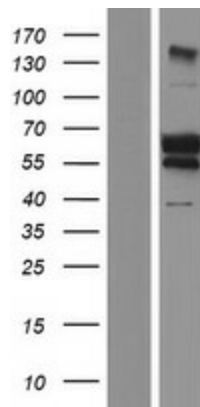
MW: 56.3 kDa

Gene Summary: Functions as a transcriptional activator in a promoter context-dependent manner. Modulates the placental expression of CYP11A1. Involved in regulation of the alpha-globin gene in erythroid cells. Activation of the alpha-globin promoter in erythroid cells is via synergistic interaction with TFCP2 (By similarity). Involved in regulation of the alpha-globin gene in erythroid cells. Binds strongly to sequences around the HIV-1 initiation site and weakly over the TATA-box. Represses HIV-1 transcription by inhibiting the binding of TFIID to the TATA-box.[UniProtKB/Swiss-Prot Function]

Product images:



Circular map for RC225866



Western blot validation of overexpression lysate (Cat# [LY426902]) using anti-DDK antibody (Cat# [TA50011-100]). Left: Cell lysates from untransfected HEK293T cells; Right: Cell lysates from HEK293T cells transfected with RC225866 using transfection reagent MegaTran 2.0 (Cat# [TT210002]).