

## Product datasheet for **RC225864**

### **YAP1 (NM\_001130145) Human Tagged ORF Clone**

#### **Product data:**

Product Type:	Expression Plasmids
Product Name:	YAP1 (NM_001130145) Human Tagged ORF Clone
Tag:	Myc-DDK
Symbol:	YAP1
Synonyms:	COB1; YAP; YAP2; YAP65; YKI
Mammalian Cell Selection:	Neomycin
Vector:	pCMV6-Entry (PS100001)
E. coli Selection:	Kanamycin (25 ug/mL)



[View online »](#)

**ORF Nucleotide Sequence:**

>RC225864 representing NM\_001130145  
 Red=Cloning site Blue=ORF Green=Tags(s)

TTTTGTAATACGACTCACTATAGGGCGGCCGGGAATTCGTCGACTGGATCCGGTACCGAGGAGATCTGCC  
 GCC**GCGATCGCC**

ATGGATCCCGGGCAGCAGCCGCCCTCAACCGGCCCCAGGGCCAAGGCAGCCGCTTCGCAGCCCC  
 CGCAGGGGCAGGGCCCGCGTCCGGACCGGGCAACCGCACCCGCGGACCCAGGCGGCGCCGAGGC  
 ACCCCCCGCCGGGCATCAGATCGTGCACGTCGCGGGGACTCGGAGACCGACCTGGAGGCGCTTCAAC  
 GCCGTCATGAACCCCAAGACGGCCAACGTGCCAGACCGTGCCATGAGGCTCCGGAAGCTGCCGACT  
 CCTTCTCAAGCCCGGAGCCAAATCCACTCCCGACAGGCCAGTACTGATGCAGGACTGCAGGAGC  
 CCTGACTCCACAGCATGTTGAGCTCATTCTCTCCAGCTTCTCTGCAGTTGGGAGCTGTTTCTCTGGG  
 AACTGACCCCACTGGAGTAGTCTCTGGCCAGCAGCTACACCCACAGCTCAGCATCTTCGACAGTCTT  
 CTTTTGAGATACCTGATGATGTACCTCTGCCAGCAGGTTGGGAGATGGCAAAGACATCTTCTGGTCAG  
 ATACTTCTTAAATCACATCGATCAGACAACAACATGGCAGGACCCAGGAAGGCCATGCTGTCCCAGATG  
 AACGTCACAGCCCCACCACTCCACAGTGCAGCAGAATATGATGAACTCGGCTTCAGGCTCTTCTCTG  
 ATGGATGGGAACAAGCCATGACTCAGGATGGAGAAATTTACTATATAAACCATAGAACAAGACCACCTC  
 TTGGTAGACCCAAGGCTTGACCCTCGTTTTGCCATGAACCAGAGAATCAGTCAGAGTGCTCCAGTGAAA  
 CAGCCACCACCCCTGGCTCCCCAGAGCCACAGGGAGGCGTCA TGGGTGGCAGCAACTCCAACCAGCAGC  
 AACAGATGCGACTGCAGCAACTGCAGATGGAGAAGGAGAGGCTGCGGCTGAAACAGCAAGAAGCTGCTTCG  
 GCAGGCAATGCGGAATATCAATCCAGCACAGCAAATTCCTCAAATGTCAGGAGTTAGCCCTGCGTAGC  
 CAGTTACCAACTGGAGCAGGATGGTGGGACTCAAAATCCAGTGTCTTCTCCGGGATGCTCAGGAAT  
 TGAGAACAAATGACGACCAATAGCTCAGATCCTTTCCTAACAGTGGCACCTATCACTCTCGAGATGAGAG  
 TACAGACAGTGGACTAAGCATGAGCAGCTACAGTGTCCCTCGAACCCAGATGACTTCTGAACAGTGTG  
 GATGAGATGGATACAGGTGATACTATCAACCAAAGCACCTGCCCTCACAGCAGAACCGTTTCCAGACT  
 ACCTTGAAGCCATTCTGGGACAAATGTGGACCTTGAACACTGGAAGGAGATGGAATGAACATAGAAGG  
 AGAGGAGCTGATGCCAAGTCTGCAGGAAGCTTTGAGTTCTGACATCCTTAATGACATGGAGTCTGTTTTG  
 GCTGCCACCAAGCTAGATAAAGAAAGCTTTCTTACATGGTTA

**ACGCGT**ACGCGGCCGCTCGAGCAGAAACTCATCTCAGAAGAGGATCTGGCAGCAAATGATATCTGGATT  
 ACAAGGATGACGACGATAAGGTTTAA

**Protein Sequence:**

>RC225864 representing NM\_001130145  
 Red=Cloning site Green=Tags(s)

MDPGQQPPPPQAPQGGQPPSQPPQGGQPPSGPGQPAPAATQAAPQAPPAGHQIVHVRGDSETDLEALFN  
 AVMNPKTANVPQTVPMRLRKLPSFFKPPPEPKSHSRQASTDAGTAGALTPQHVRHSSPASLQLGAVSPG  
 TLTPTGVVSGPAATPTAQHLRQSSFEIPDDVPLPAGWEMAKTSSGQRYFLNHIDQTTTQQDPRKAMLSQM  
 NVTAPTSPPVQQNMNSASGPLPDGWEQAMTQDGEIYYINHNKNTT SWLDPRLDPRFAMNQRISQSAPVK  
 QPPPLAPQSPQGGVMGGSNSNQQMRLQQLQMEKERLRKQELLRQAMRNINPSTANSKQELALRS  
 QLPTLEQDGGTQNPVSSPGMSQELRTMTNSSDPFLNSGTYHSRDESTDSGLSMSSYSVPRTPDDFLNSV  
 DEMDTGDTINQSTLPSQQNRPDYLEAIPGTNVDLGTLEGDMNIEGEEMLPSLQEALSSDILNDMESVL  
 AATKLDKESFLTWL

**TRTRPLEQKLI**SEEDLAANDILDYKDDDDKV

**Chromatograms:**

[https://cdn.origene.com/chromatograms/mg4733\\_h11.zip](https://cdn.origene.com/chromatograms/mg4733_h11.zip)

**Restriction Sites:**

Sgfl-Mlul

**Cloning Scheme:**

**ACCN:** NM\_001130145

**ORF Size:** 1512 bp

**OTI Disclaimer:** Due to the inherent nature of this plasmid, standard methods to replicate additional amounts of DNA in E. coli are highly likely to result in mutations and/or rearrangements. Therefore, OriGene does not guarantee the capability to replicate this plasmid DNA. Additional amounts of DNA can be purchased from OriGene with batch-specific, full-sequence verification at a reduced cost. Please contact our customer care team at [custsupport@origene.com](mailto:custsupport@origene.com) or by calling 301.340.3188 option 3 for pricing and delivery.

The molecular sequence of this clone aligns with the gene accession number as a point of reference only. However, individual transcript sequences of the same gene can differ through naturally occurring variations (e.g. polymorphisms), each with its own valid existence. This clone is substantially in agreement with the reference, but a complete review of all prevailing variants is recommended prior to use. [More info](#)

**OTI Annotation:** This clone was engineered to express the complete ORF with an expression tag. Expression varies depending on the nature of the gene.

**Components:** The ORF clone is ion-exchange column purified and shipped in a 2D barcoded Matrix tube containing 10ug of transfection-ready, dried plasmid DNA (reconstitute with 100 ul of water).

- Reconstitution Method:**
1. Centrifuge at 5,000xg for 5min.
  2. Carefully open the tube and add 100ul of sterile water to dissolve the DNA.
  3. Close the tube and incubate for 10 minutes at room temperature.
  4. Briefly vortex the tube and then do a quick spin (less than 5000xg) to concentrate the liquid at the bottom.
  5. Store the suspended plasmid at -20°C. The DNA is stable for at least one year from date of shipping when stored at -20°C.

RefSeq: [NM\\_001130145.3](#)

RefSeq ORF: 1515 bp

Locus ID: 10413

UniProt ID: [P46937](#)

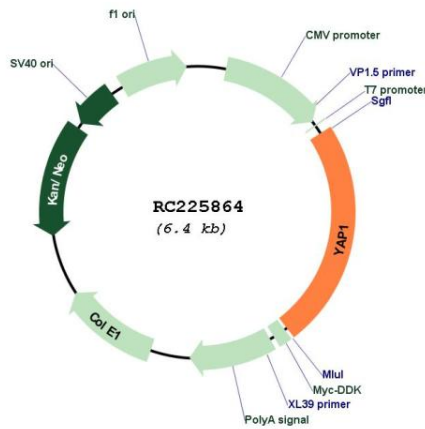
Cytogenetics: 11q22.1

Protein Families: Druggable Genome

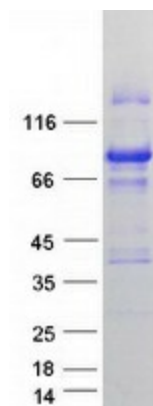
MW: 54.3 kDa

**Gene Summary:** This gene encodes a downstream nuclear effector of the Hippo signaling pathway which is involved in development, growth, repair, and homeostasis. This gene is known to play a role in the development and progression of multiple cancers as a transcriptional regulator of this signaling pathway and may function as a potential target for cancer treatment. Alternative splicing results in multiple transcript variants encoding different isoforms. [provided by RefSeq, Aug 2013]

**Product images:**



Circular map for RC225864



Coomassie blue staining of purified YAP1 protein (Cat# [TP325864]). The protein was produced from HEK293T cells transfected with YAP1 cDNA clone (Cat# RC225864) using MegaTran 2.0 (Cat# [TT210002]).