

Product datasheet for **RC225859**

PLAG1 (NM_001114634) Human Tagged ORF Clone

Product data:

| | |
|---------------------------|---|
| Product Type: | Expression Plasmids |
| Product Name: | PLAG1 (NM_001114634) Human Tagged ORF Clone |
| Tag: | Myc-DDK |
| Symbol: | PLAG1 |
| Synonyms: | PSA; SGPA; SRS4; ZNF912 |
| Mammalian Cell Selection: | Neomycin |
| Vector: | pCMV6-Entry (PS100001) |
| E. coli Selection: | Kanamycin (25 ug/mL) |



[View online »](#)

ORF Nucleotide Sequence:

>RC225859 ORF sequence
 Red=Cloning site Blue=ORF Green=Tags(s)

TTTTGTAATACGACTCACTATAGGGCGGCCGGAATTCGTCGACTGGATCCGGTACCGAGGAGATCTGCC
 GCC**CGCATCGCC**

ATGGCCACTGTCAATTCCTGGTGATTTGTCAGAAGTAAAGATACCCAGAAAGTCCCTTCAGGAAACGTA
 AGCGTGGTGAAACCAAACCAAGAAAAAATTTCTTGCCAACTGTGTGACAAGGCCTTTAAACAGTGTGA
 GAAATTAAGGTTCACTCTACTCTCACACAGGAGAGAGGCCCTACAAGTGCATACAACAAGACTGCACC
 AAGGCCTTTGTTCTAAGTACAAATTACAAAGGCACATGGCTACTCATTCTCCTGAGAAAACCCACAAGT
 GTAATTATTGTGAGAAAAATGTTTCACCGAAAGATCATCTGAAGAATCACCTCCATACACACGACCTAA
 CAAAGAGACGTTTAAAGTGCAGAAGATGTGGCAAGAACTACAATACCAAGCTTGGATTTAAACGCTCACTTG
 GCCTTGCATGCCGCAACAAGTGGTGACCTCACCTGTAAGGTATGTTTGCAAACCTTTGAAAGCACGGGAG
 TGCTTCTGGAGCACCTTAAATCTCATGCAGGCAAGTCGTCTGGTGGGGTTAAAGAAAAAAGCACCAGTG
 CGAACATTGTGATCGCCGTTCTACACCCGAAAGGATGTCGGGAGACACATGGTGGTGCACACTGGAAGA
 AAGGACTTCTCTGTGAGTATTGTGCACAGAGATTTGGGCGAAAGGATCACCTGACTCGACATATGAAGA
 AGAGTCACAATCAAGAGCTTCTGAAGGTCAAAACAGAACCAGTGGATTTCTTGACCCATTTACCTGCAA
 TGTGTCTGTGCCTATAAAAGACGAGCTCCTCCGGTGTGTCCTTACCTCCAGTGAAGTGTATCAAAG
 CCATTCACAAACACTTTGCAGTTAAACCTCTACAACACTCCATTTAGTCCATGCAGAGCTCGGGATCTG
 CCCACCAATGATCACAACCTTTACCTTTGGGAATGACATGCCCAATAGATATGGACACTGTTTATCCCTC
 TCACCACCTTTCTTTCAAATATCCGTTCACTTCTACCTCATATGCAATTTCTATTCCTGAAAAAGAACAG
 CCATTAAGGGGGAAATTGAGAGTTACCTGATGGAGTTACAAGGTGGCGTGCCCTCTTATCCCAAGATT
 CTAAGCATCGTCATCATCTAAGCTAGGTTGGATCCTCAGATTGGTCCCTAGATGATGGTGCAGGAGA
 CCTCTCCCTATCCAAAAGCTCTATCTCCATCAGTGACCCCTAAACACACCAGCATTGGATTTTTCTCAG
 TTGTTTAAATTTACACTTTAAATGGTCTCCCTATAATCCTCTATCAGTGGGGAGCCTTGAATGAGCT
 ATTCCAGGAAGAAGCACATTCTTCTGTTTCCAGCTCCCCCACAAACACAGGATCTTCAGGATCTGCG
 AAACACTATAGGGCTTGGGTCTCTGCACTCACTGTGAGCAGCTTACCAGCAGTTTAAAGACAAGTACC
 ACCCTCCACGTTTCCATCAAGCTTTTCAG

ACGCGTACGCGGCCGCTCGAGCAGAAACTCATCTCAGAAGAGGATCTGGCAGCAAATGATATCCTGGATT
 ACAAGGATGACGACGATAAGGTTTAA

Protein Sequence:

>RC225859 protein sequence
 Red=Cloning site Green=Tags(s)

MATVIPGDLSEVRDTPQKVPVSGKRKRGETKPRKNFPCQLCDKAFNSVEKLVHSYSHTGERPYKCIQQDCT
 KAFVSKYKLRHMATHSPEKTHKCNCEKMFHRKDLKNHLHHDHPNKEFKCEECGKNYNTKLGFKRHL
 ALHAATSGDLTKVCLQTFESTGVLLLEHLKSHAGKSSGGVKEKKHQCEHCRRFYTRKDVRRHVMVHTGR
 KDFLCQYCAQRFGRKDHLTRHMKKSHNQELLKVKTEPVDFLDPFTCNVSVPIKDELPLVMSLPSSELLSK
 PFTNTLQLNLYNTPFQSMQSSGSAHQMITTLPLGMTCPIDMDTVHPSHLSFKYPPFSSTSYAISPEKEQ
 PLKGEIESYLMELQGGVPSSSQDSQASSSSKLGDPQIGSLDDGAGDLSLSKSSISISDPLNTPALDFSQ
 LFNFIPLNGPPYNPLSVGSLGMSYSQEEAHSSVSQLPPQTQDLQDPANTIGLGSLSLSAAFTSSLSTST
 TLPRFHQAFQ

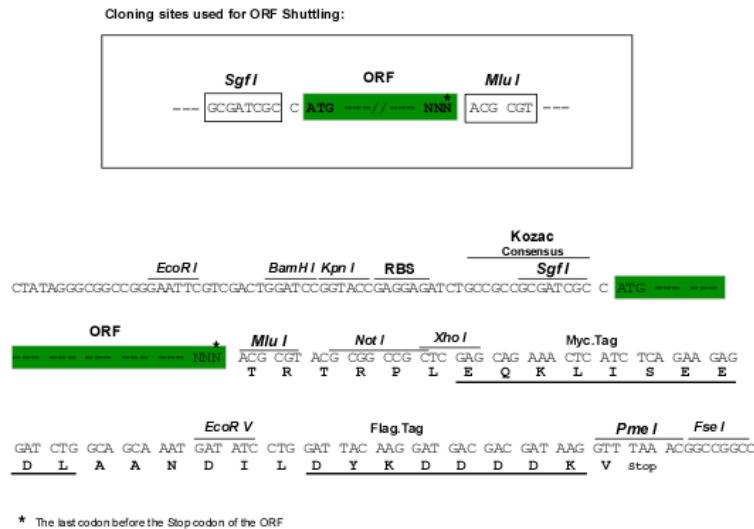
TRTRPLEQKLISEEDLAANDILDYKDDDDKV

Chromatograms:

https://cdn.origene.com/chromatograms/mk6584_b12.zip

Restriction Sites:

Sgfl-Mlul

Cloning Scheme:


ACCN: NM_001114634

ORF Size: 1500 bp

OTI Disclaimer: The molecular sequence of this clone aligns with the gene accession number as a point of reference only. However, individual transcript sequences of the same gene can differ through naturally occurring variations (e.g. polymorphisms), each with its own valid existence. This clone is substantially in agreement with the reference, but a complete review of all prevailing variants is recommended prior to use. [More info](#)

OTI Annotation: This clone was engineered to express the complete ORF with an expression tag. Expression varies depending on the nature of the gene.

Components: The ORF clone is ion-exchange column purified and shipped in a 2D barcoded Matrix tube containing 10ug of transfection-ready, dried plasmid DNA (reconstitute with 100 ul of water).

- Reconstitution Method:**
1. Centrifuge at 5,000xg for 5min.
 2. Carefully open the tube and add 100ul of sterile water to dissolve the DNA.
 3. Close the tube and incubate for 10 minutes at room temperature.
 4. Briefly vortex the tube and then do a quick spin (less than 5000xg) to concentrate the liquid at the bottom.
 5. Store the suspended plasmid at -20°C. The DNA is stable for at least one year from date of shipping when stored at -20°C.

RefSeq: [NM_001114634.2](#)

RefSeq Size: 7233 bp

RefSeq ORF: 1503 bp

Locus ID: 5324

UniProt ID: [Q6DJT9](#)

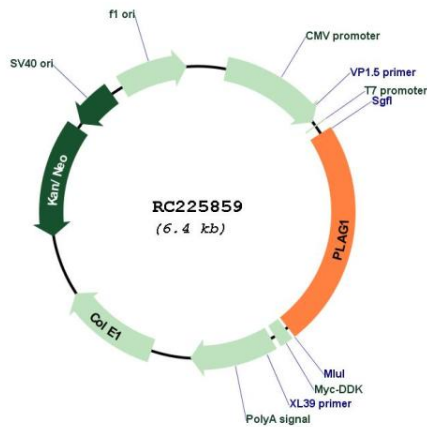
Cytogenetics: 8q12.1

Protein Families: Transcription Factors

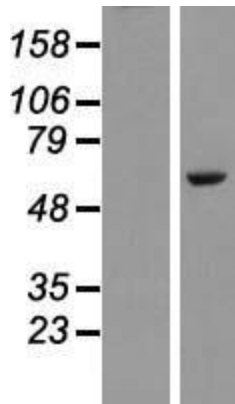
MW: 55.9 kDa

Gene Summary: Pleomorphic adenoma gene 1 encodes a zinc finger protein with 2 putative nuclear localization signals. PLAG1, which is developmentally regulated, has been shown to be consistently rearranged in pleomorphic adenomas of the salivary glands. PLAG1 is activated by the reciprocal chromosomal translocations involving 8q12 in a subset of salivary gland pleomorphic adenomas. Three transcript variants encoding two different isoforms have been found for this gene. [provided by RefSeq, Jul 2008]

Product images:



Circular map for RC225859



Western blot validation of overexpression lysate (Cat# [LY426500]) using anti-DDK antibody (Cat# [TA50011-100]). Left: Cell lysates from untransfected HEK293T cells; Right: Cell lysates from HEK293T cells transfected with RC225859 using transfection reagent MegaTran 2.0 (Cat# [TT210002]).