

## Product datasheet for **RC225856**

### WDR26 (NM\_001115113) Human Tagged ORF Clone

#### Product data:

Product Type:	Expression Plasmids
Product Name:	WDR26 (NM_001115113) Human Tagged ORF Clone
Tag:	Myc-DDK
Symbol:	WDR26
Synonyms:	CDW2; GID7; MIP2; SKDEAS
Mammalian Cell Selection:	Neomycin
Vector:	pCMV6-Entry (PS100001)
E. coli Selection:	Kanamycin (25 ug/mL)



[View online »](#)

**ORF Nucleotide Sequence:**

>RC225856 representing NM\_001115113  
 Red=Cloning site Blue=ORF Green=Tags(s)

TTTTGTAATACGACTCACTATAGGGCGGCCGGAATTCGTCGACTGGATCCGGTACCGAGGAGATCTGCC  
 GCC**CGGATCGCC**

ATGCAAGAGTCAGGATGTCGTTTAGAACATCCTTCTGCTACCAAATTCGAAATCATGTCATGGAAGGAG  
 ACTGGGATAAGGCAGAAAATGACCTGAATGAACTAAAGCCTTTAGTGATTCTCCTCATGCTATTGTGAG  
 GATGAAGTTTTTCTGCTGCAGCAGAAGTACCTAGAATACCTGGAGGATGGCAAGGTCCTGGAGGCACTT  
 CAAGTTCTACGCTGTGAATTGACGCGCTGAAATACAATACAGAGCGCATTTCATGTTCTTAGTGGGTATC  
 TGATGTGTAGCCATGCAGAAGACCTACGTGCAAAAGCAGAATGGGAAGGCAAAGGACAGCTTCCCGATC  
 TAAACTATTGGATAAACTTCAGACCTATTTACCACCATCAGTGTGCTTCCCCACGCGCTTTACAGACT  
 CTCCTGCGGCAGGCGGTGGAACATAAAGGGATCGGTGCCTATATCACAATACCAAACCTTGATAATAATC  
 TAGATTCTGTGTCTCTGCTTATAGACCATGTTTGTAGTAGGAGGCAGTCCCATGTTATACGCAGCAGAT  
 ACTTACGGAGCATTGTAATGAAGTGTGGTCTGTAAATCTCTAATGATGGCACTAACTAGCAACAGGA  
 TCAAAAGATACAACAGTTATCATATGGCAAGTTGATCCGGATACACACCTGCTAAAACCTGCTAAAACAT  
 TAGAAGGACATGCTTATGGCGTTTCTTATATTGCATGGAGTCCAGATGACAACTATCTTGTGCTTGTGG  
 CCCAGATGACTGCTCTGAGCTTTGGCTTTGGAATGTACAAACAGGAGAAGTAAGGACAAAATGAGCCAG  
 TCTCATGAAGACAGTTTGACAAGTGTGGCTTGGAAATCCAGATGGGAAGCGCTTTGTGACTGGAGGTCAGC  
 GTGGGCAGTTCATCAGTGTGACTTAGATGGTAATCTCCTTGACTCCTGGGAAGGGTAAGAGTGAATG  
 CCTTTGGTGTGAGTGTGAAAGACTGTTCTGGCATCAGATACACACCAGCGAATTCGGGGCTATAAC  
 TTCGAGGACCTTACAGATAGGAACATAGTACAAGAAGTATCCTATTATGTCTTTACTATTTCAAAAA  
 ATGGCCGATTAGCTTTGTTAAATGTAGCAACTCAGGGAGTTCATTTATGGGACTTGCAAGACAGAGT  
 AGTAAGAAAGTATCAAGGTGTTACACAAGGTTTTATACAATTCATTGTTTTGGAGGCCATAATGAA  
 GACTTCATCGCTAGTGGCAGTGAAGATCACAAGGTTTACATCTGGCACAACGTAGTGAAGTCCCAATTG  
 CGGAGCTGACAGGGCACACACGTACAGTAACTGTGTGAGCTGGAACCCACAGATTCCATCCATGATGGC  
 CAGCGCTCAGATGATGGCACTGTTAGAATATGGGGACCAGCACCTTTTATAGACCACCAGAATATTGAA  
 GAGGAATGCAGTAGCATGGATAGT

**ACGCGT**ACGCGGCCGCTCGAGCAGAACTCATCTCAGAAGAGGATCTGGCAGCAAATGATATCCTGGATT  
 ACAAGGATGACGACGATAAGGTTTAA

**Protein Sequence:**

>RC225856 representing NM\_001115113  
 Red=Cloning site Green=Tags(s)

MQESGCRLEHPSATKFRNHVMEGDWKAENDLNELKPLVHSPHAIVRMKFLLLQQKYLEYLEDGKVLLEAL  
 QVLRCELTPPKYNTERRIHVLSGYLMCSHAEDLRAKAEWEGKGTASRKLKLDKLTQYLPPSVMLPPRRQLT  
 LLRQAVELQRDRCLYHNTKLDNNLDSVLLIDHVCRRQFPCYTQQILTEHCNEVWFCKFSNDGKTLATG  
 SKDTTVIIWQVDPDTHLLKLLKLEGHAYGVSYIAWSPDDNYLVACGPDDCSELWLVNVTGELRTKMSQ  
 SHEDSLTSVAWNPDKRFVTGGQRGFYQCDLDGNLLDSWEGVRVQCLWCLSDGKTVLASDTHQRIRGYN  
 FEDLTDNRIVQEDHPIMSFTISKNGRLALLNVATQGVHLWDLQDRVLVRKYQGVYQGFYTIHSCFGGHNE  
 DFIASGSEDHKVIWHKRSELP I AELTGHTRTVNCVSWNPQIPSMASASDDGTVRIWGPAPFIDHQINIE  
 EECSSMDS

**TRTRPLEQKLI**SEEDLAANDILDYKDDDDKV

**Chromatograms:**

[https://cdn.origene.com/chromatograms/mk8034\\_h12.zip](https://cdn.origene.com/chromatograms/mk8034_h12.zip)

**Restriction Sites:**

Sgfl-Mlul

**Cloning Scheme:**


**ACCN:** NM\_001115113

**ORF Size:** 1494 bp

**OTI Disclaimer:** The molecular sequence of this clone aligns with the gene accession number as a point of reference only. However, individual transcript sequences of the same gene can differ through naturally occurring variations (e.g. polymorphisms), each with its own valid existence. This clone is substantially in agreement with the reference, but a complete review of all prevailing variants is recommended prior to use. [More info](#)

**OTI Annotation:** This clone was engineered to express the complete ORF with an expression tag. Expression varies depending on the nature of the gene.

**Components:** The ORF clone is ion-exchange column purified and shipped in a 2D barcoded Matrix tube containing 10ug of transfection-ready, dried plasmid DNA (reconstitute with 100 ul of water).

- Reconstitution Method:**
1. Centrifuge at 5,000xg for 5min.
  2. Carefully open the tube and add 100ul of sterile water to dissolve the DNA.
  3. Close the tube and incubate for 10 minutes at room temperature.
  4. Briefly vortex the tube and then do a quick spin (less than 5000xg) to concentrate the liquid at the bottom.
  5. Store the suspended plasmid at -20°C. The DNA is stable for at least one year from date of shipping when stored at -20°C.

**RefSeq:** [NM\\_001115113.1](#), [NP\\_001108585.1](#)

**RefSeq ORF:** 1938 bp

**Locus ID:** 80232

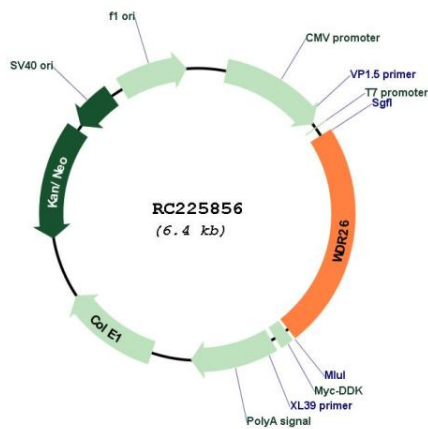
**UniProt ID:** [Q9H7D7](#)

**Cytogenetics:** 1q42.11-q42.12

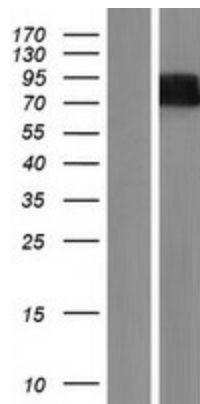
**MW:** 56.94 kDa

**Gene Summary:**

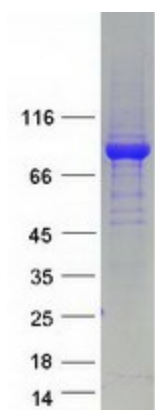
This gene encodes a member of the WD repeat protein family. WD repeats are minimally conserved regions of approximately 40 amino acids typically bracketed by gly-his and trp-aspartate (GH-WD), which may facilitate formation of heterotrimeric or multiprotein complexes. Members of this family are involved in a variety of cellular processes, including cell cycle progression, signal transduction, apoptosis, and gene regulation. Two transcript variants encoding two different isoforms have been found for this gene. [provided by RefSeq, Jul 2008]

**Product images:**


Circular map for RC225856



Western blot validation of overexpression lysate (Cat# [LY426522]) using anti-DDK antibody (Cat# [TA50011-100]). Left: Cell lysates from untransfected HEK293T cells; Right: Cell lysates from HEK293T cells transfected with RC225856 using transfection reagent MegaTran 2.0 (Cat# [TT210002]).



Coomassie blue staining of purified WDR26 protein (Cat# [TP325856]). The protein was produced from HEK293T cells transfected with WDR26 cDNA clone (Cat# RC225856) using MegaTran 2.0 (Cat# [TT210002]).