

## Product datasheet for **RC225854**

### GSDME (NM\_001127453) Human Tagged ORF Clone

#### Product data:

Product Type:	Expression Plasmids
Product Name:	GSDME (NM_001127453) Human Tagged ORF Clone
Tag:	Myc-DDK
Symbol:	GSDME
Synonyms:	DFNA5; ICERE-1
Mammalian Cell Selection:	Neomycin
Vector:	pCMV6-Entry (PS100001)
E. coli Selection:	Kanamycin (25 ug/mL)



[View online »](#)

**ORF Nucleotide Sequence:**

>RC225854 ORF sequence  
 Red=Cloning site Blue=ORF Green=Tags(s)

TTTTGTAATACGACTCACTATAGGGCGGCCGGAATTCGTCGACTGGATCCGGTACCGAGGAGATCTGCC  
 GCC**CGCATCGCC**

ATGTTTGCCAAGCAACCAGGAATTTTCTAGAGAAGTTGATGCTGATGGTGACCTGATTGCAGTATCAA  
 ATCTGAATGACTCTGATAAGTTACAGCTTCTAAGTCTGGTGACAAAAAGAAGAGATTCTGGTGCTGGCA  
 GAGACCCAAGTACCAGTTTTTATCCCTCACCTTGGCGATGTAATCATAGAAGACCAATTTCCGAGTCCA  
 GTGGTCGTGGAGTCGGACTTTGTGAAATACGAGGGCAAGTTTGCAAACCACGTGAGTGGAAACCTGGAGA  
 CTGCACTGGGGAAGGTCAAGCTGAACCTGGGGGCGAGCCGCTAGAGAGCCAGTCTTCATTTGGAAC  
 CCTGAGGAAGCAGGAGGTGGATTTGCAGCAGCTCATCAGAGACTGCCGAGAGAACAATAAATCTGAGA  
 AACCTGTGCTCCAGCAGGTGCTGGAGGGAAGGAATGAGTCTGTGCGTTTTGACACAGAAGATCAGCA  
 CGATGCAGAAGTGTGATCTCTGAGCACATGCAGGTCGAGGAGAAGTGGTGGCATCGTGGGCATCCA  
 GACCAAGACGGTGCAGGTGTCAGCGACGGAGGATGGGAATGTACCAAGGACTCCAACGTGGTGTGGAG  
 ATCCCAGCTGCCACCACCTACCTACGGTGTCTTGTGATGATGAGTTATACGTGAAACTGGACGGCCTGTTGAGT  
 TCTGCCTTCTCCGAGGGAAGCAAGGTGGCTTCGAGAACAAGAAGAGAATTGACTCTGTCTACCTGGACCA  
 CCTGGTCTTTGAGAGTTTGCATTATAGACATGCCAGATGCTGCGCATGGGATATCTTCCAGGATGGA  
 CCATTAAGTGTTTAAAGCAAGCGACCCTGCTCCTGGAGAGGAATTTCCATCCATTTGCGGAGCTGCCTG  
 AGCCACAACAGACAGCTTTGAGTGACATCTCCAGGCGGTCGATTTTGATGATGAACTACTCATGGTCTCT  
 GGAACCAAGTGTGCGATGACCTGGTCAGCGGCTCTCGCCACAGTGGCGGTGCTGGGGGAGCTGAAGCCC  
 CGGCAGCAGCAGGACCTGTGGCCTTCTGCAGCTGGTGGGTGCAGCTTACAGGGTGGGTGCCGGCC  
 CCGAGGATGCAGGCAGCAAGCAGCTGTTTATGACAGCCTACTTCTTGGTCACTGCCCTCGCAGAAATGCC  
 AGATAGCCGACGACGCTCTGCTGGGCACTTGTGCAAACTCCAGATCATTCCACACTGTGCCACTTGCTT  
 CGTGCTCTGTCTGATGATGGAGTATCTGATCTTGAAGACCAACCTTACTCCCTGAAAGATACAGAAA  
 GGTTTGGGATTGTGCAGCGCTTGTGCTCAGCTGACATTAGTCTGGAGAGACTGAAGTATCTGTGAA  
 AGCTGTCACTTGAAGGACTCTAAAGTCTTCCACTGCTCTTTGTATAACCCTGAATGGACTCTGTGCT  
 TTAGGCAGAGAACATTCA

**ACGCGT**ACGCGGCCGCTCGAGCAGAACTCATCTCAGAAGAGGATCTGGCAGCAAATGATATCCTGGATT  
 ACAAGGATGACGACGATAAGGTTTAA

**Protein Sequence:**

>RC225854 protein sequence  
 Red=Cloning site Green=Tags(s)

MFAKATRNFLREVDADGDLIAVSNLNDSDKLQLLSLVTKKKRFRWCWQRPKYQFLSLTLGDVLIEDQFPSP  
 VVVESDFVKYEGKFANHVSGTLETALGKVKLNLGGSSRVESQSSFGLRQKQEVLDLQQLIRDSAERTINLR  
 NPVLQQVLEGRNEVLCVLTQKITTMQKCVISEHMVQVEEKCGGIVGIQTKTVQVSATEDGNVTKDSNVVLE  
 IPAATTIAYGVIELYVKLDGLFEFCLLRGKQGGFENKRRIDSVYLDHLVFRFAFIDMPDAAHGISSQDG  
 PLSVLKQATLLLRNFHPFAELPEPQQTALSDIFQAVVFDDELLMVLEPVCDDLVSGLSPTVAVLGELKP  
 RQQQDLVAFLLQVGCSLQGGCPGPELAGSKQLFMTAYFLVSALAEMPDSAAALLGTCCCKLQIIPTLCHLL  
 RALSDDGVSLEDPDPTLPLKDKTERFGIVQRLFASADISLERLKSSVKAVILKDSKVFPLLLCITLNLGLCA  
 LGREHS

**TRTRPLEQKLI**SEEDLAANDILDYKDDDDKV

**Chromatograms:**

[https://cdn.origene.com/chromatograms/mk6546\\_c11.zip](https://cdn.origene.com/chromatograms/mk6546_c11.zip)

**Restriction Sites:**

Sgfl-MluI

**Cloning Scheme:**


**ACCN:** NM\_001127453

**ORF Size:** 1488 bp

**OTI Disclaimer:** The molecular sequence of this clone aligns with the gene accession number as a point of reference only. However, individual transcript sequences of the same gene can differ through naturally occurring variations (e.g. polymorphisms), each with its own valid existence. This clone is substantially in agreement with the reference, but a complete review of all prevailing variants is recommended prior to use. [More info](#)

**OTI Annotation:** This clone was engineered to express the complete ORF with an expression tag. Expression varies depending on the nature of the gene.

**Components:** The ORF clone is ion-exchange column purified and shipped in a 2D barcoded Matrix tube containing 10ug of transfection-ready, dried plasmid DNA (reconstitute with 100 ul of water).

**Reconstitution Method:**

1. Centrifuge at 5,000xg for 5min.
2. Carefully open the tube and add 100ul of sterile water to dissolve the DNA.
3. Close the tube and incubate for 10 minutes at room temperature.
4. Briefly vortex the tube and then do a quick spin (less than 5000xg) to concentrate the liquid at the bottom.
5. Store the suspended plasmid at -20°C. The DNA is stable for at least one year from date of shipping when stored at -20°C.

**RefSeq:** [NM\\_001127453.1](#), [NP\\_001120925.1](#)

**RefSeq Size:** 2276 bp

**RefSeq ORF:** 1491 bp

**Locus ID:** 1687

**UniProt ID:** [O60443](#)

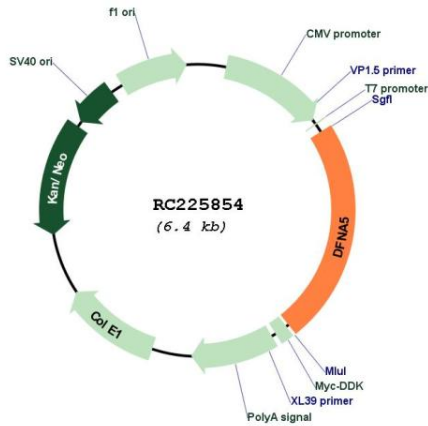
**Cytogenetics:** 7p15.3

**Protein Families:** Druggable Genome

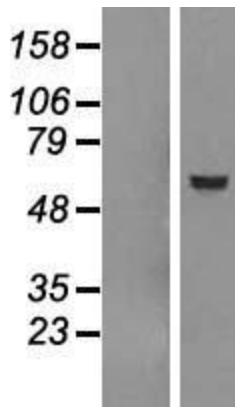
**MW:** 54.6 kDa

**Gene Summary:** Hearing impairment is a heterogeneous condition with over 40 loci described. The protein encoded by this gene is expressed in fetal cochlea, however, its function is not known. Nonsyndromic hearing impairment is associated with a mutation in this gene. Three transcript variants encoding two different isoforms have been found for this gene. [provided by RefSeq, Jul 2008]

**Product images:**



Circular map for RC225854



Western blot validation of overexpression lysate (Cat# [LY426790]) using anti-DDK antibody (Cat# [TA50011-100]). Left: Cell lysates from untransfected HEK293T cells; Right: Cell lysates from HEK293T cells transfected with RC225854 using transfection reagent MegaTran 2.0 (Cat# [TT210002]).