

## Product datasheet for **RC225852**

### ATF7 (NM\_001130059) Human Tagged ORF Clone

#### Product data:

Product Type:	Expression Plasmids
Product Name:	ATF7 (NM_001130059) Human Tagged ORF Clone
Tag:	Myc-DDK
Symbol:	ATF7
Synonyms:	ATFA
Mammalian Cell Selection:	Neomycin
Vector:	pCMV6-Entry (PS100001)
E. coli Selection:	Kanamycin (25 ug/mL)



[View online »](#)

**ORF Nucleotide Sequence:**

>RC225852 representing NM\_001130059  
 Red=Cloning site Blue=ORF Green=Tags(s)

TTTTGTAATACGACTCACTATAGGGCGGCCGGGAATTCGTCGACTGGATCCGGTACCGAGGAGATCTGCC  
 GCC**CGCATCGCC**

ATGGGAGACGACAGACCGTTTGTGTGCAATGCCCGGGCTGTGGACAGAGATTTACAACGAGGACCACC  
 TGGCAGTTCATAAACACAAGCATGAGATGACATTGAAATTTGGCCAGCCGAAGTACTGACTCAGTCATCAT  
 TGCAGATCAAACGCCTACTCCAAGTATGCTGAAAGAACTGTGAGGAGGTGGGACTCTTCAATGAACTA  
 GCTAGCTCCTTTGAACATGAATCAAGAAAGCTGCAGATGAGGATGAGAAAAAGGCAAGAAGCAGGACTG  
 TTGCCAAAAAAGTGGTGGCTGCTGCTGGGCCCTTGCATGTCTCTGCCTCCACACCAGACATCAAAAT  
 CAAAGAAGAAGAGCCAGTGGAGGTAGACTCATCCCCACCTGATAGCCCTGCCTCTAGTCCCTGTTCCCA  
 CCACTGAAGGAGAAGGAGGTTACCCCAAAGCTGTTCTGATCTCTACCCCAACCCACCATTGTACGTC  
 CTGGCTCCCTGCCTCTCCACTTGGGCTATGATCCACTTCATCAAACCTTCCCTCCCAACCTCTGTCAT  
 CACACAGGCTCCACCATCAAACAGGCAAAATGGGGTCTCCACTGGCTCCCTCCCTCTTGCATGCATCTT  
 GCTAATGGACAGACCATGCCTGTGTTGCCAGGGCTCCAGTACAGATGCCGTCTGTTATATCGCTGGCCA  
 GACCTGTGTCCATGGTGCCCAACATTCTGGTATCCCTGGCCACCAGTTAACAGTAGTGCTCCATTTTC  
 TCCCTCTGGCCACCCTATACCATCAGAAGCCAAGATGAGACTGAAAGCCACCCTAACTACCAAGTCTCC  
 TCAATCAATGGTGGTGTGGAATGGTGGTGGTACTGCCAGCACCATGGTGACAGCCCGCCAGAGCAGA  
 GCCAGATTCTCATCCAGCACCCTGATGCCCCATCCCTGCCAGCCACAGGTCTCACCAGCTCAGCCAC  
 CCCTAGTACTGGGGGCGACGGCGGCACAGTAGATGAAGATCCAGATGAGCGACGGCAGCGCTTTCTG  
 GAGCGCAACCGGGCTGCAGCCTCCCGCTGCCGCAAAAGCGAAAGCTGTGGGTGTCCTCCCTAGAGAAGA  
 AGGCCGAAGAACTCACTTCTCAGAACATTCAGCTGAGTAATGAAGTACACTACGCAATGAGGTGGC  
 CCAGTTGAAACAGCTACTGTTAGCTCATAAAGACTGCCAGTCACTGCACTACAGAAAAAGACTCAAGGC  
 TATTTAGAAAGCCCAAGGAAAGCTCAGAGCCAACGGTTCTCCAGCCCTGTGATTAGCAGCAGCTCAG  
 CAACAGCCCTAGCAATGGCCTCAGTGTTCGCTCTGCAGCTGAAGCTGTGGCCACCTCGGTCTCACTCA  
 GATGGCCAGCCAAAGGACAGAAGTGAAGCATGCCGATACAATCGCATGTAATCATGACCCACAGTCCAG  
 TCTGCGGGCAGA

**ACGCGT**ACGCGGGCGCTCGAGCAGAAACTCATCTCAGAAGAGGATCTGGCAGCAAATGATATCCTGGATT  
 ACAAGGATGACGACGATAAGGTTTAA

**Protein Sequence:**

>RC225852 representing NM\_001130059  
 Red=Cloning site Green=Tags(s)

MGDDRPFVCNAPGCGQRFNEDHLAVHKHKHEMTLKFGPARTDSVIIADQTPTRFLKNCEEVGLFNEL  
 ASSFEHEFKAAEDEKARSRTVAKKL VAAAGPLDMSLPSTPDIKIKEEEPVEVDSSPPDSPASSPCSP  
 PLKEKEVTPKPVLISTPTPTIVRPGSLPLHLGYDPLHPTLPSPSTSVITQAPPSNRQMGSPGSLPLVMHL  
 ANGQTMPVLPGPPVQMPVSVISLARPVSMVNPPIGIPGPPVNSSGSI SPSGHPIPSEAKMRLKATLTHQVS  
 SINGGCGMVVGTASTMVTARPEQSQILIQHPDAPSPAQPQVSPAQPTPSTGRRRRRTVDEDPDERRQRFL  
 ERNRAAASRCRQKRKLWVSSLEKKAEEELTSQNIQLSNEVTLLRNEVAQLKQLLLAHKDCPVTAALQKKTQG  
 YLESPKESSEPTGSPAPVIQHSSATAPSNGLSVRSAAEA VATSVLTQMASQRTEL SMPIQSHVIMTPQSQ  
 SAGR

**TRTRPLEQKLI**SEEDLAANDILDYKDDDDKV

**Chromatograms:**

[https://cdn.origene.com/chromatograms/mk8035\\_a01.zip](https://cdn.origene.com/chromatograms/mk8035_a01.zip)

**Restriction Sites:**

Sgfl-Mlul

**Cloning Scheme:**


**ACCN:** NM\_001130059

**ORF Size:** 1482 bp

**OTI Disclaimer:** The molecular sequence of this clone aligns with the gene accession number as a point of reference only. However, individual transcript sequences of the same gene can differ through naturally occurring variations (e.g. polymorphisms), each with its own valid existence. This clone is substantially in agreement with the reference, but a complete review of all prevailing variants is recommended prior to use. [More info](#)

**OTI Annotation:** This clone was engineered to express the complete ORF with an expression tag. Expression varies depending on the nature of the gene.

**Components:** The ORF clone is ion-exchange column purified and shipped in a 2D barcoded Matrix tube containing 10ug of transfection-ready, dried plasmid DNA (reconstitute with 100 ul of water).

**Reconstitution Method:**

1. Centrifuge at 5,000xg for 5min.
2. Carefully open the tube and add 100ul of sterile water to dissolve the DNA.
3. Close the tube and incubate for 10 minutes at room temperature.
4. Briefly vortex the tube and then do a quick spin (less than 5000xg) to concentrate the liquid at the bottom.
5. Store the suspended plasmid at -20°C. The DNA is stable for at least one year from date of shipping when stored at -20°C.

**RefSeq:** [NM\\_001130059.1](#), [NP\\_001123531.1](#)

**RefSeq ORF:** 1484 bp

**Locus ID:** 11016

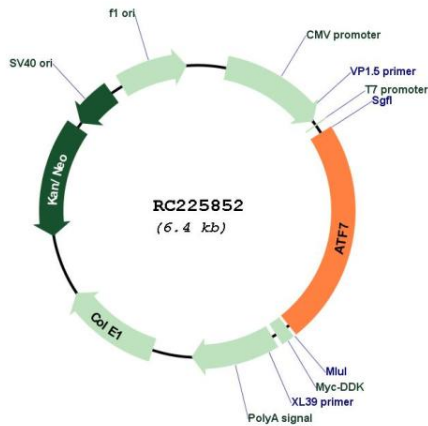
**Cytogenetics:** 12q13.13

**Protein Families:** Transcription Factors

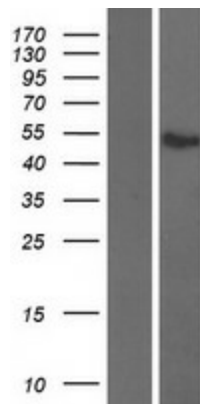
**MW:** 52.8 kDa

**Gene Summary:**

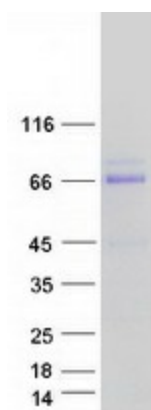
Plays important functions in early cell signaling. Binds the cAMP response element (CRE) (consensus: 5'-GTGACGT[AG][AG]-3'), a sequence present in many viral and cellular promoters. Activator of the NF-ELAM1/delta-A site of the E-selectin promoter. Has no intrinsic transcriptional activity, but activates transcription on formation of JUN or FOS heterodimers. Also can bind TRE promoter sequences when heterodimerized with members of the JUN family.[UniProtKB/Swiss-Prot Function]

**Product images:**


Circular map for RC225852



Western blot validation of overexpression lysate (Cat# [LY427137]) using anti-DDK antibody (Cat# [TA50011-100]). Left: Cell lysates from untransfected HEK293T cells; Right: Cell lysates from HEK293T cells transfected with RC225852 using transfection reagent MegaTran 2.0 (Cat# [TT210002]).



Coomassie blue staining of purified ATF7 protein (Cat# [TP325852]). The protein was produced from HEK293T cells transfected with ATF7 cDNA clone (Cat# RC225852) using MegaTran 2.0 (Cat# [TT210002]).