

Product datasheet for **RC225842**

LYN (NM_001111097) Human Tagged ORF Clone

Product data:

Product Type:	Expression Plasmids
Product Name:	LYN (NM_001111097) Human Tagged ORF Clone
Tag:	Myc-DDK
Symbol:	LYN
Synonyms:	JTK8; p53Lyn; p56Lyn
Mammalian Cell Selection:	Neomycin
Vector:	pCMV6-Entry (PS100001)
E. coli Selection:	Kanamycin (25 ug/mL)



[View online »](#)

ORF Nucleotide Sequence:

>RC225842 representing NM_001111097
 Red=Cloning site Blue=ORF Green=Tags(s)

TTTTGTAATACGACTCACTATAGGGCGGCCGGAATTCGTCGACTGGATCCGGTACCGAGGAGATCTGCC
 GCC**CGCATCGCC**

ATGGGATGTATAAAATCAAAGGAAAGACAGCTTGAGTGACGATGGAGTAGATTGAAGACTCAACCAG
 TTCAGAAATCTCAGCTTTTACCTGGACAGAGGTTTCAAACATAAGATCCAGAGGAACAAGGAGACATTGT
 GGTAGCCTTGTACCCCTATGATGGCATCCACCCGACGACTTGTCTTTCAAGAAAGGAGAGAAGATGAAA
 GTCCTGGAGGAGCATGGAGAATGGTGGAAAGCAAAGTCCCTTTTAAACAAAAAAGAAGGCTTCATCCCCA
 GCAACTATGTGGCCAACTCAACACCTTAGAAACAGAAGAGTGGTTTTTCAAGGATATAACCAGGAAGGA
 CGCAGAAAGGCAGCTTTTGGCACCAGGAAATAGCGCTGGAGCTTTCCTTATTAGAGAAAGTGAAACATTA
 AAAGGAAGCTTCTCTGTCTGTCAGAGACTTTGACCCTGTGCATGGTGTATTATTAAGCACTACAAAA
 TTAGAAGTCTGGATAATGGGGCTATTACATCTCTCCACGAATCACTTTTCCCTGTATCAGCGACATGAT
 TAAACATTACAAAAGCAGGCAGATGGCTTGTGCAGAAGATTGGAGAAGGCTTGTATTAGTCCCAAGCCA
 CAGAAGCCATGGGATAAAGATGCCTGGGAGATCCCCCGGAGTCCATCAAGTTGGTGAAAAGGCTTGGCG
 CTGGGCAGTTTGGGAAGTCTGGATGGGTTACTATAACAACAGTACCAAGGTGGCTGTGAAAACCTGAA
 GCCAGGAATATGTCTGTGCAAGCCTTCTGGAAGAAGCCAACCTCATGAAGACCCTGCAGCATGACAAG
 CTCGTGAGGCTCTACGCTGTGGTACCAGGGAGGAGCCATTTACATCATCACCGAGTACATGGCCAAGG
 GCAGTTTGTGGATTTCTGAAGAGCGATGAAGGTGGCAAAGTGTGCTTCCAAAGCTCATTGACTTTTC
 TGCTCAGATTGCAGAGGGAATGGCATACATCGAGCGGAAGAACTACATTCACCGGACCTGCGAGCAGCT
 AATGTTCTGGTCTCCGAGTCACTCATGTGCAAAATTGCAGATTTTGGCCTTGTAGAGTAATTGAAGATA
 ATGAGTACACAGCAAGGGAAGGTGCTAAGTTCCCTATTAAGTGGACGGCTCCAGAAGCAATCAACTTTGG
 ATGTTTCACTATTAAGTCTGATGTGTGGTCTTTGGAATCCTCCTATACGAAATTGTACCTATGGGAAA
 ATTCCCTACCCAGGAGAACTAATGCCGACGTGATGACCGCCCTGTCCCAGGGCTACAGGATGCCCGTG
 TGGAGAACTGCCAGATGAGCTCTATGACATTATGAAAATGTGCTGAAAAGAAAAGGCAGAGAGAGACC
 AACGTTTGACTACTTACAGAGCGTCTGGATGATTTCTACACAGCCACGGAAGGGCAATACCAGCAGCAG
 CCT

ACGCGTACGCGGCCGCTCGAGCAGAAACTCATCTCAGAAGAGGATCTGGCAGCAATGATATCCTGGATT
 ACAAGGATGACGACGATAAGGTTTAA

Protein Sequence:

>RC225842 representing NM_001111097
 Red=Cloning site Green=Tags(s)

MGCIKSKGKDSLSDGVDLKTQVPESQLLPQRFQTKDPEEQGDIVVALYPYDGIHPDDL SFKKGEKMK
 VLEEHGEWWKAKSLLTKKEGFIPSNYVAKLNTLETEEWFKDIRKDAERQLLAPGNSAGAFI IRESETL
 KGSFSLSVRDFDPVHGDVIKHYKIRSLDNGGYIISPRITFPCISDMIKHYQKQADGLCRRLEKACISPKP
 QKPWDKDAWEIPRESIKLVKRLGAGQFGEVWVMGYNNSTKVAVKTLKPGTMSVQAFLEEANLTKLQHDK
 LVRLYAVVTREPIYIITEYMAKGSLLDFLKSDEGGKVLPLKIDFSAQIAEGMAYIERKNYIHRDLRAA
 NVLVSESLMCKIADFLARVIEDNEYTAREGAKFPIKWTAPEAINFGCFTIKSDVWVSGILLYEIVTYGK
 IPYPGRTNADVMTALSQGYRMPRVENCPELDYIMKMCWKEKAERPTFDYLSVLDLDFYATGEGYQQQ
 P

TRTRPLEQKLISEEDLAANDILDYKDDDDKV

Chromatograms:

https://cdn.origene.com/chromatograms/mk8063_b06.zip

Restriction Sites:

SgfI-MluI

Cloning Scheme:

ACCN: NM_001111097

ORF Size: 1473 bp

OTI Disclaimer: Due to the inherent nature of this plasmid, standard methods to replicate additional amounts of DNA in E. coli are highly likely to result in mutations and/or rearrangements. Therefore, OriGene does not guarantee the capability to replicate this plasmid DNA. Additional amounts of DNA can be purchased from OriGene with batch-specific, full-sequence verification at a reduced cost. Please contact our customer care team at custsupport@origene.com or by calling 301.340.3188 option 3 for pricing and delivery.

The molecular sequence of this clone aligns with the gene accession number as a point of reference only. However, individual transcript sequences of the same gene can differ through naturally occurring variations (e.g. polymorphisms), each with its own valid existence. This clone is substantially in agreement with the reference, but a complete review of all prevailing variants is recommended prior to use. [More info](#)

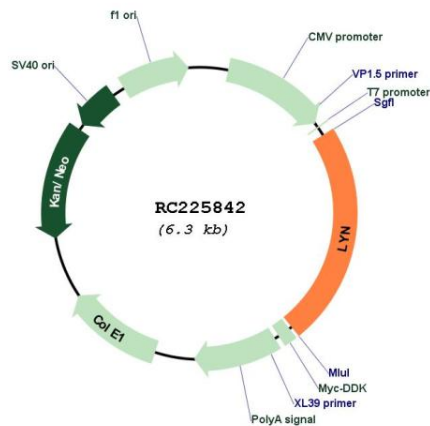
OTI Annotation: This clone was engineered to express the complete ORF with an expression tag. Expression varies depending on the nature of the gene.

Components: The ORF clone is ion-exchange column purified and shipped in a 2D barcoded Matrix tube containing 10ug of transfection-ready, dried plasmid DNA (reconstitute with 100 ul of water).

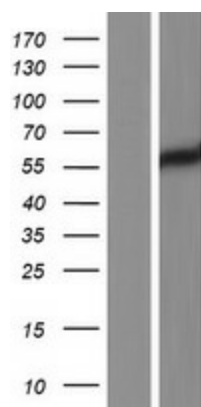
- Reconstitution Method:**
1. Centrifuge at 5,000xg for 5min.
 2. Carefully open the tube and add 100ul of sterile water to dissolve the DNA.
 3. Close the tube and incubate for 10 minutes at room temperature.
 4. Briefly vortex the tube and then do a quick spin (less than 5000xg) to concentrate the liquid at the bottom.
 5. Store the suspended plasmid at -20°C. The DNA is stable for at least one year from date of shipping when stored at -20°C.

RefSeq:	NM_001111097.3
RefSeq ORF:	1476 bp
Locus ID:	4067
UniProt ID:	P07948
Cytogenetics:	8q12.1
Protein Families:	Druggable Genome, Protein Kinase
Protein Pathways:	B cell receptor signaling pathway, Chemokine signaling pathway, Epithelial cell signaling in Helicobacter pylori infection, Fc epsilon RI signaling pathway, Fc gamma R-mediated phagocytosis, Long-term depression
MW:	55.9 kDa
Gene Summary:	This gene encodes a tyrosine protein kinase, which maybe involved in the regulation of mast cell degranulation, and erythroid differentiation. Alternatively spliced transcript variants encoding different isoforms have been found for this gene. [provided by RefSeq, Jul 2011]

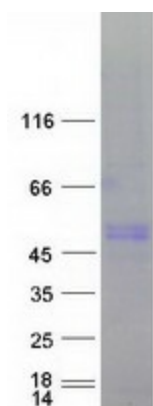
Product images:



Circular map for RC225842



Western blot validation of overexpression lysate (Cat# [LY426351]) using anti-DDK antibody (Cat# [TA50011-100]). Left: Cell lysates from untransfected HEK293T cells; Right: Cell lysates from HEK293T cells transfected with RC225842 using transfection reagent MegaTran 2.0 (Cat# [TT210002]).



Coomassie blue staining of purified LYN protein (Cat# [TP325842]). The protein was produced from HEK293T cells transfected with LYN cDNA clone (Cat# RC225842) using MegaTran 2.0 (Cat# [TT210002]).