

Product datasheet for **RC225840**

TC2N (NM_001128596) Human Tagged ORF Clone

Product data:

| | |
|---------------------------|--|
| Product Type: | Expression Plasmids |
| Product Name: | TC2N (NM_001128596) Human Tagged ORF Clone |
| Tag: | Myc-DDK |
| Symbol: | TC2N |
| Synonyms: | C2CD1; C14orf47; MTAC2D1; Tac2-N |
| Mammalian Cell Selection: | Neomycin |
| Vector: | pCMV6-Entry (PS100001) |
| E. coli Selection: | Kanamycin (25 ug/mL) |



[View online »](#)

ORF Nucleotide Sequence:

>RC225840 ORF sequence
 Red=Cloning site Blue=ORF Green=Tags(s)

TTTTGTAATACGACTCACTATAGGGCGGCCGGGAATTCGTCGACTGGATCCGGTACCGAGGAGATCTGCC
 GCC**CGGATCGCC**

ATGGCAACAGAATTTATAAAGAGTTGCTGTGGAGGATGTTTCTATGGTGAACAGAAAAACACAACCTTTT
 CTGTGAAAGAGATTTTAAAGCAGCAGTCCCAAATAGTCAAATGCTACTATCTCTGTACCTCCATTGAC
 TTCTGTTTCTGTAAGCCTCAGCTTGGCTGTACTGAGGATTATTTGCTTCCAAATTACCATCTGATGGC
 AAAGAAGTACCATTTGTGGTGCCCAAGTTAAAGTTATCTTACATTCAACCCAGGACACAAGAACTCCTT
 CACATCTGGAAGAACTTGAAGGATCTGCCAGAGCATCTTTGGAGATCGAAAGGTAGAAGTTCCAGTTC
 ATCCCAGCAGGACCTAGCTATGATGTGTATAACCCATTCTATATGTATCAGCACATTTACCTGATTTG
 AGTCGACGCTTCTCCCGTTCAGAAGTGACGAGACTGTATGGATCGGTTTGTGATTTAAGGACGAACA
 AACTTCCCGTTCCTCCCGTTCAGCAATCTATGTTTGTCTTACAAACTCATCTCAGCGATTCATCCA
 GAGACATGATTCATTGTCCAGTGTACCCAGTAGTTCTTCTTCAAGGAAAAATTCTCAGGGGAGTAACAGA
 AGCCTGGATACAATTACTCTATCAGGAGATGAAAGGGACTTTGGGAGACTGAATGTGAAATGTTTTATA
 ATTCTTCAGTAGAACAGATCTGGATCACAGTTTACAGTGCAGAGATTTAAGTTGGCCCTCTAGTTATGG
 AGACACTCCTACTGTTTCTATAAAGGAATACTTACATTGCCCAAACAGTGCATTTCAAATCTTCAGCC
 AAGGAAGGTTCCAACGCTATTGAATTTATGAAACGTTTGTATTTGCTATTAACCTTCAAATCTACAAA
 CTGTAAGACTTGTATTTAAGATTCAAACCCAGACTCCCAGGAAGAAAACCATGGAGAATGCTCAATGTC
 ACTCAGAACCTTAGCACACAGGAAATGGATTACTCTTTGGATATAACACCACCTTCAAAAATTTCTGTT
 TGCCATGCAGAACTTGAATTGGGGACTTGTTCAGCAGTAAATAGCAGAATTCAGTTACAAATTTCTTG
 AGGCACGGTACCTTCAAGCTCATCAACACCTCTGACTTTGAGTTTTCGTGAAGTGGAATGTTTAG
 CTCGGGAGAGTTGATTTATAAGAAAAAGACACGCTTACTGAAGGCTCCAATGGAAGAGTCAAGTGGGGA
 GAGACTATGATTTTCCACTTATACAGAGTGAAAAAGAAATTGTTTTTCTCATTAAAGCTTTACAGTCGAA
 GCTCTGTAAGAAGAAAACACTTTGTGGCCAGATTTGGATAAGTGAAGACAGTAATAACATTGAAGCAGT
 GAACCACTGGAAAGAGACAGTAATAATCCAGAAAAGGTTGTTATCAGGTGGCACAAATTAATCCATCT

ACGCGTACGCGGCCGCTCGAGCAGAACTCATCTCAGAAGAGGATCTGGCAGCAAATGATATCCTGGATT
 ACAAGGATGACGACGATAAGGTTTAA

Protein Sequence:

>RC225840 protein sequence
 Red=Cloning site Green=Tags(s)

MATEFIKSCCGGCFYGETEKHNF SVERDFKA AVPN SQNATISVPPLTSVSVK PQLGCTEDYLLSKLPSDG
 KEV PPFVVPKFKLSYIQPRTQETPSHLEEL EGSARASFGDRKVELSSSSQHGPSYDVYVNFYMYQHISPD
 LSRFP RSEVTRLYGSVCDLRTNKLPGSPGLSKSMFDL TNSSQRF IQRHDSLSSVPSSSSSRKNSQGSNR
 SLDTITLSGDERDFGRLNVKLFYNSSVEQI WITVLQCRDL SWPSSYGDPTVSIK GILTLPKPVHFKSSA
 KEGSNAIEFMETFVFAIKLQNLQTVRLVFKIQ TQTPRKTIGECMSLR TLSTQEMDYSLDITPPSKISV
 CHAELELGT CFQAVNSRIQLQILEARYLPSSSTPLTL SFFVKVGMFSSGELIYKKKTRLLKASNGRVKWG
 ETMIFPLIQSEKEIVFLIKLYSRSSVRRKHFV GQIWI SEDSNNIEAVNQWKETVINPEKVIRWHLNPS

TRTRPLEQKLI SEEDLAANDILDYKDDDDKV

Chromatograms:

https://cdn.origene.com/chromatograms/mk6134_e10.zip

Restriction Sites:

Sgfl-MluI

Cloning Scheme:

Cloning sites used for ORF Shutting:



* The last codon before the Stop codon of the ORF

ACCN: NM_001128596

ORF Size: 1470 bp

OTI Disclaimer: The molecular sequence of this clone aligns with the gene accession number as a point of reference only. However, individual transcript sequences of the same gene can differ through naturally occurring variations (e.g. polymorphisms), each with its own valid existence. This clone is substantially in agreement with the reference, but a complete review of all prevailing variants is recommended prior to use. [More info](#)
OTI Annotation: This clone was engineered to express the complete ORF with an expression tag. Expression varies depending on the nature of the gene.

Components: The ORF clone is ion-exchange column purified and shipped in a 2D barcoded Matrix tube containing 10ug of transfection-ready, dried plasmid DNA (reconstitute with 100 ul of water).

Reconstitution Method:

1. Centrifuge at 5,000xg for 5min.
2. Carefully open the tube and add 100ul of sterile water to dissolve the DNA.
3. Close the tube and incubate for 10 minutes at room temperature.
4. Briefly vortex the tube and then do a quick spin (less than 5000xg) to concentrate the liquid at the bottom.
5. Store the suspended plasmid at -20°C. The DNA is stable for at least one year from date of shipping when stored at -20°C.

RefSeq: [NM_001128596.2](#), [NP_001122068.1](#)
RefSeq Size: 5153 bp

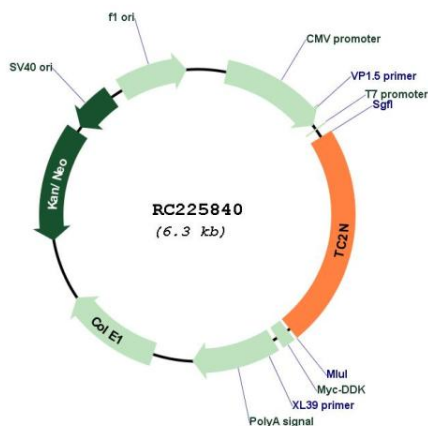
RefSeq ORF: 1473 bp

Locus ID: 123036

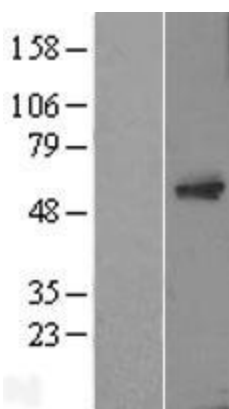
UniProt ID: [Q8N9U0](#)
Cytogenetics: 14q32.12

MW: 55.3 kDa

Product images:



Circular map for RC225840



Western blot validation of overexpression lysate (Cat# [LY426967]) using anti-DDK antibody (Cat# [TA50011-100]). Left: Cell lysates from untransfected HEK293T cells; Right: Cell lysates from HEK293T cells transfected with RC225840 using transfection reagent MegaTran 2.0 (Cat# [TT210002]).