

Product datasheet for **RC225839**

TC2N (NM_001128595) Human Tagged ORF Clone

Product data:

Product Type:	Expression Plasmids
Product Name:	TC2N (NM_001128595) Human Tagged ORF Clone
Tag:	Myc-DDK
Symbol:	TC2N
Synonyms:	C2CD1; C14orf47; MTAC2D1; Tac2-N
Mammalian Cell Selection:	Neomycin
Vector:	pCMV6-Entry (PS100001)
E. coli Selection:	Kanamycin (25 ug/mL)



[View online »](#)

ORF Nucleotide Sequence:

>RC225839 ORF sequence
 Red=Cloning site Blue=ORF Green=Tags(s)

TTTTGTAATACGACTCACTATAGGGCGGCCGGAATTCGTCGACTGGATCCGGTACCGAGGAGATCTGCC
 GCC**CGGATCGCC**

ATGGCAACAGAATTTATAAAGAGTTGCTGTGGAGGATGTTTCTATGGTGAACAGAAAAACAACACTTTT
 CTGTGGAAGAGATTTTAAAGCAGCAGTCCCAAATAGTCAAATGCTACTATCTCTGTACCTCCATTGAC
 TTCTGTTTCTGTAAGCCTCAGCTTGGCTGTACTGAGGATTATTTGCTTCCAAATTACCATCTGATGGC
 AAAGAAGTACCATTTGTGGTGCCCAAGTTAAAGTTATCTTACATTCAACCCAGGACACAAGAACTCCTT
 CACATCTGGAAGAACTTGAAGGATCTGCCAGAGCATCTTTGGAGATCGAAAGGTAGAAGTTCCAGTTC
 ATCCCAGCACGGACCTAGCTATGATGTGTATAACCCATTCTATATGTATCAGCACATTTACCTGATTTG
 AGTCGACGCTTCTCCCGTTCAGAAGTGACGAGACTGTATGGATCGGTTTGTGATTTAAGGACGAACA
 AACTTCCCGTTCCTCCCGTTCAGCAATCTATGTTTGTCTTACAAACTCATCTCAGCGATTCATCCA
 GAGACATGATTCATTGTCCAGTGTACCCAGTAGTTCTTCTCAAGGAAAAATTCTCAGGGGAGTAACAGA
 AGCCTGGATACAATTACTCTATCAGGAGATGAAAGGGACTTTGGGAGACTGAATGTGAAATGTTTTATA
 ATTCTTCAGTAGAACAGATCTGGATCACAGTTTACAGTGCAGAGATTTAAGTTGGCCCTCTAGTTATGG
 AGACACTCCTACTGTTTCTATAAAAGGAATACTTACATTGCCCAAACAGTGCATTTCAAATCTTCAGCC
 AAGGAAGTTCCAACGCTATTGAATTTATGAAACGTTTGTATTTGCTATTAACCTCAAATCTACAAA
 CTGTAAGACTTGTATTTAAGATTCAAACCCAGACTCCCAGGAAGAAAACCATGGAGAATGCTCAATGTC
 ACTCAGAACCTTAGCACACAGGAAATGGATTACTCTTTGGATATAACACCACCTCAAAAATTTCTGTT
 TGCCATGCAGAACTTGAATTGGGACTTGTTTTCAAGCAGTAAATAGCAGAATTCAGTTACAATTTCTTG
 AGGCACGGTACCTTCCAAGCTCATCAACACCTCTGACTTTGAGTTTTCGTGAAGTGGAATGTTTAG
 CTCGGGAGAGTTGATTTATAAGAAAAAGACACGCTTACTGAAGGCTCCAATGGAAGAGTCAAGTGGGGA
 GAGACTATGATTTTCCACTTATACAGAGTGAAAAAGAAATGTTTTTCTCATTAAAGCTTTACAGTCGAA
 GCTCTGTAAGAAGAAAACACTTTGTGGCCAGATTTGGATAAGTGAAGACAGTAATAACATTGAAGCAGT
 GAACCACTGGAAAGAGACAGTAATAATCCAGAAAAGGTTGTTATCAGGTGGCACAAATTAATCCATCT

ACGCGTACGCGGCCGCTCGAGCAGAACTCATCTCAGAAGAGGATCTGGCAGCAAATGATATCTGGATT
 ACAAGGATGACGACGATAAGGTTTAA

Protein Sequence:

>RC225839 protein sequence
 Red=Cloning site Green=Tags(s)

MATEFIKSCCGGCFYGETEKHNF SVERDFKA AVPN SQNATISVPPLTSVSVK PQLGCTEDYLLSKLPSDG
 KEV PPFVVPKFKLSYIQPRTQETPSHLEEL EGSARASFGDRKVELSSSSQHGPSYDVYVNFYMYQHISPD
 LSRFRPPRSEVTRLYGSVCDLRTNKLPGSPGLSKSMFDL TNSSQRF IQRHDSLSSVPSSSSRKNSQGSNR
 SLDTITLSGDERDFGRLNVKLFYNSSVEQIWITVLQCRDL SWPSSYGDPTVSIK GILTLPKPVHFKSSA
 KEGSNAIEFMETFVFAIKLQNLQTVRLVFKIQ TQTPRKKTI GEC SMLRTLSTQEMDYSLDITPPSKISV
 CHAELELGT CFQAVNSRIQLQILEARYLPSSSTPLTL SFFVKVGMFSSGELIYKKKTRLLKASNGRVKWG
 ETMIFPLIQSEKEIVFLIKLYSRSSVRRKHFVGGIWI SEDSNNIEAVNQWKETVINPEKVIRWHLNPS

TRTRPLEQKLI SEEDLAANDILDYKDDDDKV

Chromatograms:

https://cdn.origene.com/chromatograms/mk6134_e10.zip

Restriction Sites:

Sgfl-MluI

Cloning Scheme:


ACCN: NM_001128595

ORF Size: 1470 bp

OTI Disclaimer: The molecular sequence of this clone aligns with the gene accession number as a point of reference only. However, individual transcript sequences of the same gene can differ through naturally occurring variations (e.g. polymorphisms), each with its own valid existence. This clone is substantially in agreement with the reference, but a complete review of all prevailing variants is recommended prior to use. [More info](#)

OTI Annotation: This clone was engineered to express the complete ORF with an expression tag. Expression varies depending on the nature of the gene.

Components: The ORF clone is ion-exchange column purified and shipped in a 2D barcoded Matrix tube containing 10ug of transfection-ready, dried plasmid DNA (reconstitute with 100 ul of water).

Reconstitution Method:

1. Centrifuge at 5,000xg for 5min.
2. Carefully open the tube and add 100ul of sterile water to dissolve the DNA.
3. Close the tube and incubate for 10 minutes at room temperature.
4. Briefly vortex the tube and then do a quick spin (less than 5000xg) to concentrate the liquid at the bottom.
5. Store the suspended plasmid at -20°C. The DNA is stable for at least one year from date of shipping when stored at -20°C.

RefSeq: [NM_001128595.2](#), [NP_001122067.1](#)

RefSeq Size: 5034 bp

RefSeq ORF: 1473 bp

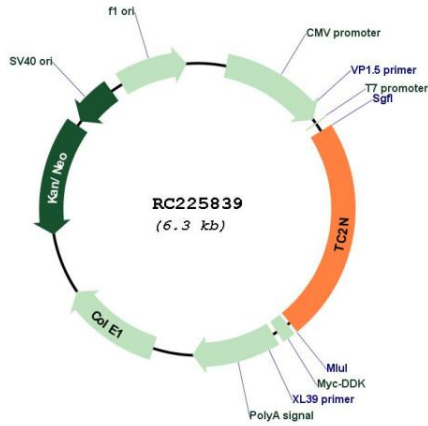
Locus ID: 123036

UniProt ID: [Q8N9U0](#)

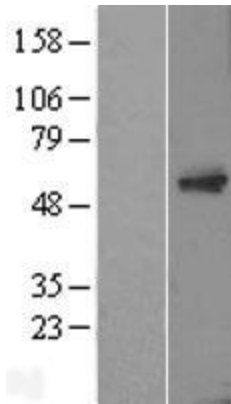
Cytogenetics: 14q32.12

MW: 55.3 kDa

Product images:



Circular map for RC225839



Western blot validation of overexpression lysate (Cat# [LY426967]) using anti-DDK antibody (Cat# [TA50011-100]). Left: Cell lysates from untransfected HEK293T cells; Right: Cell lysates from HEK293T cells transfected with [RC225840] using transfection reagent MegaTran 2.0 (Cat# [TT210002]).