

## Product datasheet for **RC225830**

### DUX4L7 (NM\_001127387) Human Tagged ORF Clone

#### Product data:

Product Type:	Expression Plasmids
Product Name:	DUX4L7 (NM_001127387) Human Tagged ORF Clone
Tag:	Myc-DDK
Symbol:	DUX4L7
Mammalian Cell Selection:	Neomycin
Vector:	pCMV6-Entry (PS100001)
E. coli Selection:	Kanamycin (25 ug/mL)



[View online »](#)

**ORF Nucleotide Sequence:**

>RC225830 representing NM\_001127387  
 Red=Cloning site Blue=ORF Green=Tags(s)

TTTTGTAATACGACTCACTATAGGGCGGCCGGAATTCGTCGACTGGATCCGGTACCGAGGAGATCTGCC  
 GCC**CGCATCGCC**

ATGAAGGGGTGGAGCCTGCCTGCCTGTGGCCTTTACAAGGGCGGCTGGCTGGCTGGCTGGCTGTCCGGG  
 CAGGCCTCCTGGCTGCACCTGCCGACGTGCACAGTCCGGCTGAGGTGCACGGGAGCCCGCCGCCTCTCT  
 CTGCCCGCTCCGTCCGTGAAATTCGGCCGGGGCTCACCGCATGGCCCTCCCGACACCTTCGGACAGC  
 ACCCTCCCGCGGAAGCCCGGGGACGAGGACGGGACGGAGACTCGTTTGGACCCGAGCCAAAGCGAGG  
 CCCTGCGAGCCTGCTTTGAGCGGAACCCGTACCCGGGCATCGCCACCAGAGAACGGCTGGCCAGGCCAT  
 CGGCATTCGGAGCCAGGGTCCAGATTTGTTTCAGAATGAGAGGTACGCCAGCTGAGGCAGCACCCGG  
 CGGGAATCTCGGCCCTGGCCGGGAGACGGCCCGCCAGAAGGCCGGCGAAAGCGGACCCCGTCAACC  
 GATCCAGACCCCTGCTCTCCGAGCCTTTGAGAAGGATCGCTTTCCAGGCATCGCCGCCGGGAGGA  
 GCTGGCCAGAGACGGGCTCCCGGAGTCCAGGATTCAGATCTGGTTTCAGAATCGAAGGGCCAGGCAC  
 CCGGGACAGGGTGGCAGGGCGCCCGCAGGCAGGCGCCCTGTGACGCGGCCCGCCCGGGGGTCAACC  
 CTGCTCCCTCGTGGTTCGCTTCGCCACACCGGCGCGTGGGGAACGGGGCTTCCCGCACCCACGTGCC  
 CTGCGCGCTGGGGCTCTCCACAGGGGGCTTTCGTGAGCCAGGCAGCGAGGGCCCGCCCGCGCTGCAG  
 CCCAGCCAGGCCGCGCCGGCAGAGGGGTCTCCCAACCTGCCCGGCGCGGGGATTCGCTACGCCG  
 CCCCAGCTCCTCCGACGGGGCGCTCTCCACCCTCAGGCTCCTCGTGGCTCCGCACCCGGGCAAAAG  
 CCGGGAGACCGGACCCGACGCGGACGGCTGCCGGGCCCTGCGCGTGGCACAGCTGGGCCCGCTGG  
 GCCGGGTCCCCAGGTGCGCCGGGCGGCTGGGAACCCCAAGCCGGGGCAGCTCCACCTCCCAGCCCGC  
 GCCCCCGGACGCTCCGCTCCGCGGGCAGGGCAGATGCAAGGCATCCCGCGCCCTCCAGGCGCTC  
 CAGGAGCCGCGCCCTGCTGCACTCCCTGCGGCTGCTGCTGGATGAGCTCCTGGCAGCCCGGAGT  
 TTCTGCAGCAGGCACAACCTCTCTAGAAACGGAGGCCCGGGGAGCTGGAGGCCTCGAAGAGGCCGC  
 CTCGCTGGAAGCACCCCTCAGCGAGGAAGAATACCGGGCTCTGCTGGAGGAGCTT

**ACGCGT**ACGCGGCCGCTCGAGCAGAAACTCATCTCAGAAGAGGATCTGGCAGCAATGATATCCTGGATT  
 ACAAGGATGACGACGATAAGGTTTAA

**Protein Sequence:**

>RC225830 representing NM\_001127387  
 Red=Cloning site Green=Tags(s)

MKGWSLPACGPLQGRLAGWLA VRAGLLAAPAAVHSPA EVHGSPPASLCPRPSVKFRPGLTAMALTPSDS  
 TLP AEARGRRRRLVWTPSQSEALRACFERNYPGIATRERLAQAIGIPEPRVQIWFQNERSRQLRQHR  
 RESRPWPGRGPPEGRKRRTAVTGSQTALLLRAFEKDRFPGIAAREELARETGLPESRIQIWFQNRARH  
 PGQGRAPAQAGGLCSAAPGGHPAPSWVAFHTGAWGTGLPAPHVPCAPGALPQGA FVSQAARAAPALQ  
 PSQAAPAEVGSQPAPARGDFAYAAPPD GALSHPQAPRWPPHPGKSREDRDPQRDGLPGPCA VAQPGPA  
 QAGPQQGV LAPPTSQGSPPWWGGRGPQVAGA WEPQAGAAPPQPAPPDASASARQGMQIPAPSQAL  
 QEPAPWSALPCG LLLDELLASPEFLQAQPLLE TEAPGELEA SEEAASLEAPLSEEEYRALLEEL

**TR**TRPLEQKLISEEDLAANDILDYKDDDDKV

**Chromatograms:**

[https://cdn.origene.com/chromatograms/mk8035\\_a04.zip](https://cdn.origene.com/chromatograms/mk8035_a04.zip)

**Restriction Sites:**

SgfI-MluI

**Cloning Scheme:**


**ACCN:** NM\_001127387

**ORF Size:** 1455 bp

**OTI Disclaimer:** The molecular sequence of this clone aligns with the gene accession number as a point of reference only. However, individual transcript sequences of the same gene can differ through naturally occurring variations (e.g. polymorphisms), each with its own valid existence. This clone is substantially in agreement with the reference, but a complete review of all prevailing variants is recommended prior to use. [More info](#)

**OTI Annotation:** This clone was engineered to express the complete ORF with an expression tag. Expression varies depending on the nature of the gene.

**Components:** The ORF clone is ion-exchange column purified and shipped in a 2D barcoded Matrix tube containing 10ug of transfection-ready, dried plasmid DNA (reconstitute with 100 ul of water).

**Reconstitution Method:**

1. Centrifuge at 5,000xg for 5min.
2. Carefully open the tube and add 100ul of sterile water to dissolve the DNA.
3. Close the tube and incubate for 10 minutes at room temperature.
4. Briefly vortex the tube and then do a quick spin (less than 5000xg) to concentrate the liquid at the bottom.
5. Store the suspended plasmid at -20°C. The DNA is stable for at least one year from date of shipping when stored at -20°C.

**RefSeq:** [NM\\_001127387.1](#), [NP\\_001120859.2](#)

**RefSeq ORF:** 1275 bp

**Locus ID:** 653543

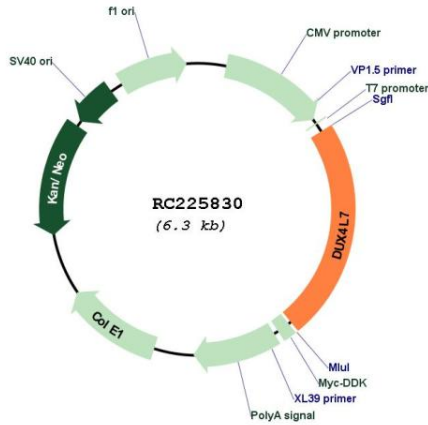
**Cytogenetics:** 4q35.2

**MW:** 50.9 kDa

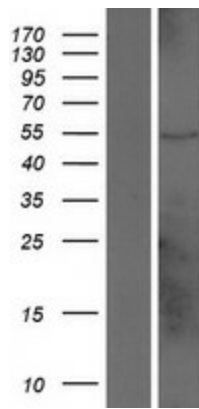
**Gene Summary:**

This gene is located within a D4Z4 repeat array in the subtelomeric region of chromosome 4q. The D4Z4 repeat is polymorphic in length and a similar D4Z4 repeat array has been identified on chromosome 10. Each D4Z4 repeat unit has an open reading frame (named DUX4) that encodes two homeoboxes; the repeat-array and ORF is conserved in other mammals. There is no evidence for transcription of the gene at this locus though RT-PCR and in vitro expression experiments indicate that a telomeric paralog of this gene is transcribed in some haplotypes. Contraction of the macrosatellite repeat causes autosomal dominant facioscapulohumeral muscular dystrophy (FSHD). [provided by RefSeq, Jun 2014]

**Product images:**



Circular map for RC225830



Western blot validation of overexpression lysate (Cat# [LY426770]) using anti-DDK antibody (Cat# [TA50011-100]). Left: Cell lysates from untransfected HEK293T cells; Right: Cell lysates from HEK293T cells transfected with RC225830 using transfection reagent MegaTran 2.0 (Cat# [TT210002]).