

Product datasheet for **RC225816**

FLIP (CFLAR) (NM_001127183) Human Tagged ORF Clone

Product data:

Product Type:	Expression Plasmids
Product Name:	FLIP (CFLAR) (NM_001127183) Human Tagged ORF Clone
Tag:	Myc-DDK
Symbol:	FLIP
Synonyms:	c-FLIP; c-FLIPL; c-FLIPR; c-FLIPS; CASH; CASP8AP1; Casper; cFLIP; CLARP; FLAME; FLAME-1; FLAME1; FLIP; I-FLICE; MRIT
Mammalian Cell Selection:	Neomycin
Vector:	pCMV6-Entry (PS100001)
E. coli Selection:	Kanamycin (25 ug/mL)



[View online »](#)

ORF Nucleotide Sequence:

>RC225816 ORF sequence
 Red=Cloning site Blue=ORF Green=Tags(s)

TTTTGTAATACGACTCACTATAGGGCGGCCGGAATTCGTCGACTGGATCCGGTACCGAGGAGATCTGCC
 GCC**GCGATCGCC**

ATGTCTGTGTAAGTCATCCATCAGTTGAAGAAGCACTTGATACAGATGAGAAGGAGATGCTGCTCTTTT
 TGTGCCGGGATGTTGCTATAGATGTGGTCCACCTAATGTCAGGGACCTTCTGGATATTTTACGGGAAAG
 AGGTAAGCTGTCTGTCGGGGACTTGGCTGAACTGCTCTACAGAGTGAGGCGATTTGACCTGCTCAAACGT
 ATCTTGAAGATGGACAGAAAAGCTGTGGAGACCCACCTGCTCAGGAACCTCACCTTGTTTCGGACTATA
 GAGTGCTGATGGCAGAGATTGGTGAGGATTTGGATAAATCTGATGTGTCCTATTAATTTTCTCATGAA
 GGATTACATGGGCCGAGGCAAGATAAGCAAGGAGAAGAGTTTCTGGACCTTGTGGTTGAGTTGGAGAAA
 CTAATCTGGTTGCCAGATCAACTGGATTTATTAGAAAATGCCTAAGAACATCCACAGAATAGACC
 TGAAGACAAAAATCCAGAAGTACAAGCAGTCTGTTCAAGGAGCAGGACAAGTTACAGGAATGTTCTCCA
 AGCAGCAATCCAAAAGAGTCTCAAGGATCTTCAAATAACTTCAGGCTCCATAATGGGAGAAGTAAAGAA
 CAAAGACTTAAGGAACAGCTTGGCGCTCAACAAGAACCAGTGAAGAAATCCATTCAGGAATCAGAAGCTT
 TTTTGCCTCAGAGCATACCTGAAGAGAGATACAAGATGAAGAGCAAGCCCTAGGAATCTGCCTGATAAT
 CGATTGCATTGGCAATGAGACAGAGCTTCTTCGAGACACCTTCACTTCCCTGGGCTATGAAGTCCAGAAA
 TTCTTGATCTCAGTATGCATGGTATATCCAGATTCTTGGCCAAATTTGCCTGTATGCCCGAGCACCAG
 ACTACGACAGCTTTGTGTGTCTCTGGTGAGCCGAGGAGGCTCCCAGAGTGTGTATGGTGTGGATCAGAC
 TCACTCAGGGCTCCCCGCATCACATCAGGAGGATGTTTATGGGAGATTATGCCCTTATCTAGCAGGG
 AAGCCAAAGATGTTTTTATTAGAATATGTGGTGTGAGAGGCGAGCTGGAGGACAGCAGCCTCTTGG
 AGGTGGATGGCCAGCGATGAAGAATGGAATCAAGGCTCAGAAGCGAGGGCTGTGCACAGTTCACCG
 AGAAGCTGACTTCTTCTGGAGCCTGTGTACTGCGGACATGTCCTGCTGGAGCAGTCTCACAGTCCACCA
 TCCTGTACCTGCAGTGCCTCTCCAGAACTGAGACAAGAAAAGAAAACGCCACTCCTGGATCTTCACA
 TTGAACTCAATGGCTACATGTATGATTGGAACAGCAGAGTTTCTGCCAAGGAGAAATATTATGTCTGGCT
 GCAGCACACTCTGAGAAAAGAACTTATCTCTCTACACA

ACGCGTACGCGGCCGCTCGAGCAGAACTCATCTCAGAAGAGGATCTGGCAGCAAATGATATCCTGGATT
 ACAAGGATGACGACGATAAGGTTTAA

Protein Sequence:

>RC225816 protein sequence
 Red=Cloning site Green=Tags(s)

MSAEVIHQVEEALDTDEKEMLLFLCRDVAIDVPPNVRDLLDILRERKLSVGDLAELLYRVRFDLLKR
 ILKMDRKAVETHLLRNPHLVSDYRVLMAEIGEDLDKSDVSSLIFLMKDYMGKGKISKEKSFLLVVELEK
 LNLVAPDQLDLEKCLKNIHRIDLKTKIQKYKQSVQAGTSYRNVLQAAIQKSLKDPNSNFRLNHNGRSKE
 QRLKEQLGAQQEPVKKSIQESEAFLPQSIPEERYKMKSKPLGICLIIDCIGNETELLRDFTSLGYEVQK
 FLHLSMHGISQILGQFACMPEHRDYDSFVCLVSRGGSQSVYGVQDTHSGLPLHHIRRMFMGDSCPYLAG
 KPKMFFIQNYVYVSEGQLEDSSLLEVDGPAMKNVEFKAQKRGLCTVHREADFFWSLCTADMSLLEQSHSSP
 SLYLQCLSQKLRQERKRPLLDLHIELNGYMYDWNRSRVSACEKYVWVWQHTLRKKLILSYT

TRTRPLEQKLISEEDLAANDILDYKDDDDKV

Chromatograms:

https://cdn.origene.com/chromatograms/mk6081_g09.zip

Restriction Sites:

SgfI-MluI

Cloning Scheme:


ACCN: NM_001127183

ORF Size: 1440 bp

OTI Disclaimer: The molecular sequence of this clone aligns with the gene accession number as a point of reference only. However, individual transcript sequences of the same gene can differ through naturally occurring variations (e.g. polymorphisms), each with its own valid existence. This clone is substantially in agreement with the reference, but a complete review of all prevailing variants is recommended prior to use. [More info](#)

OTI Annotation: This clone was engineered to express the complete ORF with an expression tag. Expression varies depending on the nature of the gene.

Components: The ORF clone is ion-exchange column purified and shipped in a 2D barcoded Matrix tube containing 10ug of transfection-ready, dried plasmid DNA (reconstitute with 100 ul of water).

- Reconstitution Method:**
1. Centrifuge at 5,000xg for 5min.
 2. Carefully open the tube and add 100ul of sterile water to dissolve the DNA.
 3. Close the tube and incubate for 10 minutes at room temperature.
 4. Briefly vortex the tube and then do a quick spin (less than 5000xg) to concentrate the liquid at the bottom.
 5. Store the suspended plasmid at -20°C. The DNA is stable for at least one year from date of shipping when stored at -20°C.

Note: Plasmids are not sterile. For experiments where strict sterility is required, filtration with 0.22um filter is required.

RefSeq: [NM_001127183.4](#)

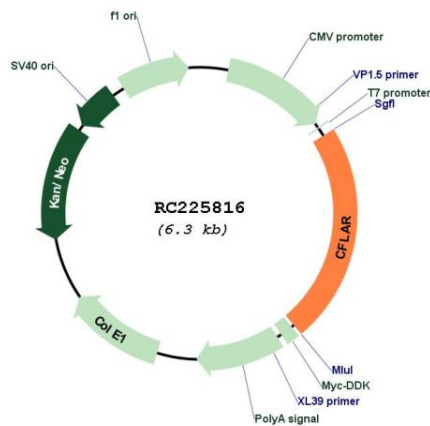
RefSeq Size: 10668 bp

RefSeq ORF: 1443 bp

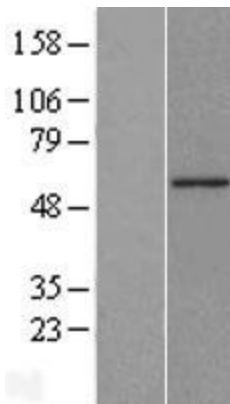
Locus ID: 8837

UniProt ID: [O15519](#)
Cytogenetics: 2q33.1
Protein Families: Druggable Genome, Protease
Protein Pathways: Apoptosis
MW: 55.3 kDa
Gene Summary: The protein encoded by this gene is a regulator of apoptosis and is structurally similar to caspase-8. However, the encoded protein lacks caspase activity and appears to be itself cleaved into two peptides by caspase-8. Several transcript variants encoding different isoforms have been found for this gene, and partial evidence for several more variants exists. [provided by RefSeq, Feb 2011]

Product images:



Circular map for RC225816



Western blot validation of overexpression lysate (Cat# [LY426693]) using anti-DDK antibody (Cat# [TA50011-100]). Left: Cell lysates from untransfected HEK293T cells; Right: Cell lysates from HEK293T cells transfected with RC225816 using transfection reagent MegaTran 2.0 (Cat# [TT210002]).