

Product datasheet for **RC225804**

PRAMEF14 (NM_001024661) Human Tagged ORF Clone

Product data:

Product Type:	Expression Plasmids
Product Name:	PRAMEF14 (NM_001024661) Human Tagged ORF Clone
Tag:	Myc-DDK
Symbol:	PRAMEF14
Mammalian Cell Selection:	Neomycin
Vector:	pCMV6-Entry (PS100001)
E. coli Selection:	Kanamycin (25 ug/mL)



[View online »](#)

ORF Nucleotide Sequence:

>RC225804 representing NM_001024661
 Red=Cloning site Blue=ORF Green=Tags(s)

TTTTGTAATACGACTCACTATAGGGCGGCCGGAATTCGTCGACTGGATCCGGTACCGAGGAGATCTGCC
 GCC**CGCATCGCC**

ATGAGCATCCAGGCCACCCAGACTCCTGGAGCTGGCAGGGCAGAGCCTGCTGAGAGACCAGGCCCTTGT
 CCATCTCTGCCATGGAGGAGCTGCCAGGGTGCTCTATCTCCACTCTTCATGGAGGCCCTCCCGCAGGAG
 ACACTTCCAGACTCTGACGGTGATGGTGCAGGCCCTGGCCCTTCACCTGCCTCCCTCTGGGATCACTGATG
 AAGACGCTTCATTTGGAGACCTAAAAGCATTGCTGGAAGGGCTTCATATGCTGCTTACACAGAAGGATC
 GCCCAGGAGGTGAAACTTCAAGTGTGGATTGCGGGATGTTGATGAGAATTTCTGGCCAGATGGCC
 TGGAGCCTGGGCCCTGTCTGCTCCCAGAGACCATGAGTAAGAGGCAGACAGCAGAGGACTGTCCAAGG
 ATGGGAGAGCACCAGCCCTAAAGGTGTTTCATAGACATCTGCCTCAAGGAAATACCCAGGATGAATGCC
 TGAGATACCTCTTTCAGTGGGTTTACCAAAGGAGAGGTTTAGTACACCTGTGCTGTAGTAAGCTGGTCAA
 TTATCTAACGCCGATTAACATCTCAGAAAGTCATTGAAAATAATACCTGAATAGTATCAACAGCTG
 GAAATTCGCAACATGTCTGGCCAGCTCTGATAAGAAAGCTTCGTTGTTACCTGAAGGAGATGAAGAATC
 TTCGAAACTCGTTTTCTCCAGGTGCCATCATTCCATGTCAGATAATGAACTCGAAGGACGGTTAGTCAC
 CAAATTCAGCTCTGTGTTCTCAGGCTGGAACACCTCCAGTTGCTTAAAAATAAATTGATCACCTTCTTC
 AGTGGGCACCTGGAACAGCTGATCAGGTGCCTCCAGAACCCTTGGAAGACTTGAATTAACCTATGGCT
 ACCTATTGGAAGAAGACATGAAGTGTCTCTCCAGTACCAAGCCTCGGTTACCTAAAGCATCTGAATCT
 CAGCTACGTGCTGCTGTTCCGCATCAGTCTTGAACCCCTCGGAGCTCTGCTAGAGAAAATTGCTGCCTCT
 CTCGAAACCCTCATCTTGGAGGGCTGTGAGTCCACTACTCCAACTCAGTGCCTCTGCTGGCCTGAAGGACCT
 GCCACTGCTCCAGCTCACCACCTTCTACTTTGGCAGAAATTGATGTCTATGGGTGCCCTGAAGGACCT
 GTTGCGCCACACCAGTGGGCTGAGCAAGTTAAGCCTGGAGACGTATCCTGCCCTGAGGAGAGTTTGAAT
 TCCTTGGTTCGTGTCGATTGGGAGATCTTCGCCCTACTTCGGGCTGAGCTGATGTGTACTGAGGGAAG
 TCAGGCAGCCCAAGAGGATCTTCATTGGTCCCACCCCTGCCCTTCTGTGGCTCATCACGCTCTGAGGA
 ACTGGAGCTCCATCTTTGCTGC

ACGCGTACGCGGCCGCTCGAGCAGAAACTCATCTCAGAAGAGGATCTGGCAGCAAATGATATCCTGGATT
 ACAAGGATGACGACGATAAGGTTTAA

Protein Sequence:

>RC225804 representing NM_001024661
 Red=Cloning site Green=Tags(s)

MSIQAPPRLLELAGQSLLRDQALSI SAMEELPRVLYLPLFMEAFRRRHQTLTVMVQAWPFTCLPLGSLM
 KTLHLETLKALLEGLHMLLTQKDRPRRWKLQVLDLRDVENFWARWPGAWALSCFPETMSKRQTAEDCPR
 MGEHQPLKVFIDICLKEIPQDECLRYLFQWVYQRRGLVHLCCSKLVNYLTPIKHLRKSLSKIIYLNLSIQQL
 EIRNMSWPRLIRKLRCYLKEMKNLRKLVF SRCHHSMSDNELEGRVTKFSSVFLRLEHLQLLKIKLITFF
 SGHLEQLIRCLQNPLENLELTYGYLLEEDMKCLSQYPSLGYLKHLNLSYVLLFRISLEPLGALLEKIAAS
 LETLILEGCQIHYSQLSAILPGLSHCSQLTTFYFGRNCMSMGALKDLLRHTSGLSKLSLETYPAPPEESLN
 SLVRVDWEIFALLRAELMCTLREVRQPKRIFIGPTPCPSCGSSPSEELELHLC

TRTRPLEQKLISEEDLAANDILDYKDDDDKV

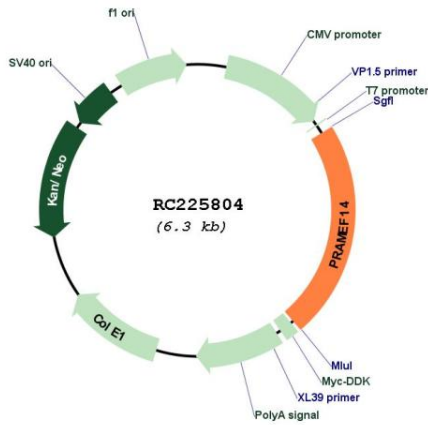
Chromatograms:

https://cdn.origene.com/chromatograms/mk8035_a07.zip

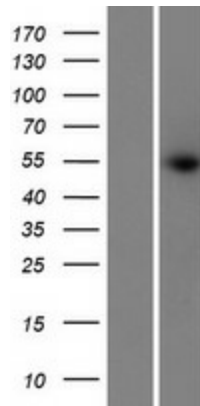
Restriction Sites:

Sgfl-Mlul

Product images:



Circular map for RC225804



Western blot validation of overexpression lysate (Cat# [LY425457]) using anti-DDK antibody (Cat# [TA50011-100]). Left: Cell lysates from untransfected HEK293T cells; Right: Cell lysates from HEK293T cells transfected with RC225804 using transfection reagent MegaTran 2.0 (Cat# [TT210002]).