

Product datasheet for **RC225798**

GTPBP3 (NM_001128855) Human Tagged ORF Clone

Product data:

Product Type:	Expression Plasmids
Product Name:	GTPBP3 (NM_001128855) Human Tagged ORF Clone
Tag:	Myc-DDK
Symbol:	GTPBP3
Synonyms:	COXPD23; GTPBG3; MSS1; MTGP1; THDF1
Mammalian Cell Selection:	Neomycin
Vector:	pCMV6-Entry (PS100001)
E. coli Selection:	Kanamycin (25 ug/mL)



[View online »](#)

ORF Nucleotide Sequence:

>RC225798 representing NM_001128855
 Red=Cloning site Blue=ORF Green=Tags(s)

TTTTGTAATACGACTCACTATAGGGCGGCCGGAATTCGTCGACTGGATCCGGTACCGAGGAGATCTGCC
 GCC**GCGATCGCC**

ATGTGGCGGGGGCTTTGGACCTGGCGGCCAAGCGGCACGTGGGCCTCGCAGATTGTGCACGCGCCGGA
 GCAGCGGCGACCCAGCCCCGGCTCCGGCGCCACCATCTTCGCGTAAGCTCTGGCCAAGGCCGCTGCGG
 CATCGCAGTGATCCGACCAGCGCCCCGCCAGCGGCCACGCCCTCCGAATTCTCACAGCACCCGAGAC
 CTGCCCTTGTCTCGCCACGCCAGCCTGCGCCTGCTCAGCGATCCCCGCTCCGGGGAGCCTCTGGACCGG
 CACTGGTGTCTGGTTCCAGGTCCCAGAGTTTACCAGGTGAGGACTGCGTGGAGTTCCACGTGCATGG
 AGGCCCGCAGTGGTGGCGGCTCTGCAGGCCCTGGGCAGCGTCCAGGGCTTCGACCGCGGAGGCA
 GGGCAGTTCACCAGACGGCGTTCGCCAATGGGAAGCTGAACCTGACCGAAGTGGAGGGGCTGGCGGACC
 TTATCCACGCGGAAACAGAGGCGCAGCGCGCCAGGCCCTCAGGCAGCTGGACGGAGAGCTGGGCCACCT
 CTGCCGTGGCTGGCCGAGACCCACCAAAGCTTGGCCACGTGGAGGCCTATATCGATTCGCGGAG
 GATGACAACCTGGAGGAGGGGTCTGGAGCAAGCCGACATCGAAGTACGGGCACTGCAGGTGGCCCTGG
 GTGCACATCTACGAGATGCCAGGCGGGCAGAGGCTCCGCTCAGGGGTGCACGTAGTGGTCACTGGACC
 CCCAATGCGGGCAAGAGCAGCCTAGTGAACCTGCTCAGTCGGAAGCCTGTGTCCATCGTGTCCCGGAG
 CCAGGGACACCCGTGACGTGCTGGAGACCCAGTCGACCTGGCCGATTTCCTGTGCTGCTGAGCGACA
 CGGCTGGGTTGCGGGAGGGCGTGGGGCCCGTGGAGCAGGAGGGCGTGGCGCGCCCGGGAGAGTTGCAA
 CTTCTGGCCACCGTCGTAGCCTCTGTGGGAGCCAGAGCCCCAGTGACAGCAGCCAGCGCCTCCTCCTG
 GTGCTGAACAAGTCGGACCTGCTGTCCCGGAGGGCCAGTCCCGTCTGACCTGCCCGGCACCTGC
 TGCTGTCTGTCTGACGGGAGAGGGCTGGACGGCCTCCTGGAGCGCTGAGGAAGGAGCTAGCTGCACT
 GTGTGGGACCCGTCCACAGATCCCGCTGCTGACCCGAGCAAGGCACCAAGCACCCTCCAGGGTTGC
 CTGGATGCCCTCGGCCACTACAAGCAGTCAAAGACCTGGCCCTGGCGGAGAGGCGCTGCGGGTGGCC
 GGGGTACCTGACCCGGCTCACAGGTGGAGGGGTACCGAGGAGATCCTGGACATCATCTCCAGGACTT
 CTGTGTGGGCAAG

ACGCGTACGCGGCCGCTCGAGCAGAACTCATCTCAGAAGAGGATCTGGCAGCAATGATATCCTGGATT
 ACAAGGATGACGACGATAAGGTTTAA

Protein Sequence:

>RC225798 representing NM_001128855
 Red=Cloning site Green=Tags(s)

MWRGLWTLAAQAARGPRRLCTRRSSGAPAPGSGATIFALSSGQGRCGIAVIRTSGPASGHALRILTAPRD
 LPLARHASLRLLSDPRSGEPLDRALVLFPGPQSFTGEDCVFHVHGGPAVVSGVLQALGSVPGLRPAEA
 GEFTRRAFANGKLNLEVEGLADLIHAETEAQRRQALRQLDGELGHLCRGWAETLTKALAHVEAYIDFGE
 DDNLEEVLEQADIEVRALQVALGAHLRDARRGQRLRSGVHVVTGPPNAGKSSLVNLRSRKPVSIVSPE
 PGTTRDVLETPVDLAGFPVLLSDTAGLREGVGPVEQEGVRRARESCNFLATVVASVGAQSPSSQRLLL
 VLNKSDLLSPEGPGPDLPPLLLL SCLTGEGLDGLLEALRKELAAVCGDPSTDPPLLTRARHQHHLQGC
 LDALGHYQSKDLALAAEALRVARGHLTRLTGGGGTTEEILDIIIFQDFCVGK

TRTRPLEQKLISEEDLAANDILDYKDDDDKV

Chromatograms:

https://cdn.origene.com/chromatograms/mk8062_b08.zip

Restriction Sites:

Sgfl-Mlul

Cloning Scheme:


ACCN: NM_001128855

ORF Size: 1413 bp

OTI Disclaimer: The molecular sequence of this clone aligns with the gene accession number as a point of reference only. However, individual transcript sequences of the same gene can differ through naturally occurring variations (e.g. polymorphisms), each with its own valid existence. This clone is substantially in agreement with the reference, but a complete review of all prevailing variants is recommended prior to use. [More info](#)

OTI Annotation: This clone was engineered to express the complete ORF with an expression tag. Expression varies depending on the nature of the gene.

Components: The ORF clone is ion-exchange column purified and shipped in a 2D barcoded Matrix tube containing 10ug of transfection-ready, dried plasmid DNA (reconstitute with 100 ul of water).

Reconstitution Method:

1. Centrifuge at 5,000xg for 5min.
2. Carefully open the tube and add 100ul of sterile water to dissolve the DNA.
3. Close the tube and incubate for 10 minutes at room temperature.
4. Briefly vortex the tube and then do a quick spin (less than 5000xg) to concentrate the liquid at the bottom.
5. Store the suspended plasmid at -20°C. The DNA is stable for at least one year from date of shipping when stored at -20°C.

RefSeq: [NM_001128855.3](#)

RefSeq ORF: 1416 bp

Locus ID: 84705

UniProt ID: [Q969Y2](#)

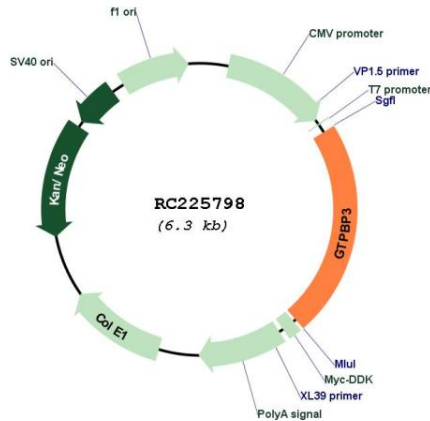
Cytogenetics: 19p13.11

MW: 49.7 kDa

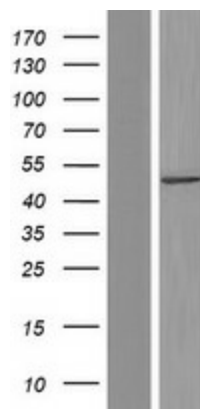
Gene Summary:

This locus encodes a GTP-binding protein. The encoded protein is localized to the mitochondria and may play a role in mitochondrial tRNA modification. Polymorphisms at this locus may be associated with severity of aminoglycoside-induced deafness, a disease associated with a mutation in the 12S rRNA. Alternatively spliced transcript variants encoding different isoforms have been described. [provided by RefSeq, Sep 2010]

Product images:



Circular map for RC225798



Western blot validation of overexpression lysate (Cat# [LY427012]) using anti-DDK antibody (Cat# [TA50011-100]). Left: Cell lysates from untransfected HEK293T cells; Right: Cell lysates from HEK293T cells transfected with RC225798 using transfection reagent MegaTran 2.0 (Cat# [TT210002]).