

Product datasheet for **RC225796**

ABLIM2 (NM_001130088) Human Tagged ORF Clone

Product data:

Product Type:	Expression Plasmids
Product Name:	ABLIM2 (NM_001130088) Human Tagged ORF Clone
Tag:	Myc-DDK
Symbol:	ABLIM2
Mammalian Cell Selection:	Neomycin
Vector:	pCMV6-Entry (PS100001)
E. coli Selection:	Kanamycin (25 ug/mL)



[View online »](#)

ORF Nucleotide Sequence:

>RC225796 representing NM_001130088
 Red=Cloning site Blue=ORF Green=Tags(s)

TTTTGTAATACGACTCACTATAGGGCGGCCGGAATTCGTCGACTGGATCCGGTACCGAGGAGATCTGCC
 GCC**CGATCGCC**

ATGAGTGCAGTGTGCGAGCCCCAGGCTGCTCCAGCCCGTGGAGAAGTCGCCAGCACGGCGATCCTGT
 GCAACACGTGTGGGAATGTGTGCAAGGGCGAGGTGCTGCGGGTGCAGGACAAGTACTTCCACATCAAGTG
 CTTCTGTGTAAGCATGTGGCTGCGACCTGGCCGAGGGCGGCTTCTTCGTGCGGCGAGGGCGAGTACATC
 TGCACGCTGGACTACCAGAGGCTCTACGGCACCCGCTGCTTCAGCTGCGACCAGTTCATTGAGGGTGAGG
 TGGTGTGCGGCGTGGCAAGACCTACCACCCGACTGCTTCGTGTGTGCCGTCTGCCGGTCCCTTCCC
 CCCCAGGGACCGAGTGACCTTCAACGGGAAGGAATGCATGTGCCAGAAGTGTCCCTGCCGTATCGGTG
 GGCAGCAGCGCACCTGTCCAGGGCCTCCGAAGTTGTGGGGTGCAGGACAGAAATCAAGAATGGCC
 AGGCCCTGGTAGCCTTGGACAAGCACTGGCACTGGGCTGTTTTAAGTCAAGAGCTGTGGGAAGCTCCT
 GAATGCCGAGTACATCAGCAAGGATGGGCTGCCCTACTCGAAGCTGACTATCACGCCAAGTTCGGCATC
 CGCTGTGACAGCTGTGAGAAATACATCACGGGGCGGTGCTGGAGCCGGAGAGAAGCACTACCACCTT
 CCTGCGCGCTATGTGTCAGGTGCGGCCAGATGTTTGCAGAAGGCCAAGAGATGTATCTTCAAGTTCCCTC
 CATCTGGCATCCGGCGTGTGACAAGCAGCCAGAAGTGAAGACAGAAACAAGGAAACCAGAACTTCTCTCA
 GAGAGCATCATTCTGTCCCTGCTTCCAGCACCTCAGGGTCTCCGAGCCGTGTGATTTATGCCAAGCTTG
 GTGGTGTGATCCTGGACTACAGGGACTTGGCAGCCCTTCTAAAAGTAAAGCCATCTATGACATCGACCC
 CCCCAGATGATCTCTACTCACCTACATCAGCCACTTGCAGGGGACAGGCAGAGCTACGGCGAGTCC
 CCTCAGTTGCTCTCGCCAACGCCAGCCAGGGGGATCAGGATGACCGGTCTACAAGCAGTGTGGACCT
 CCAGCCCAAGCTCCACTGGTTCGGTTAGCCTCGGGCGCTACACTCCGACCTCACGGTCCACAGCACTA
 CAGCCGTCCAGCTGCCAGGCGATCGGATGGGGAGGATGGAAGCTTGGACCAGGATAACAGGAAGCAGAAG
 AGCAGCTGGCTGATGCTCAAGGGGGATGCAGACACAAGGACCAATTCTCCAGACCTGGACACCCAGTCTT
 TGTCCACAGCAGCGGGACCGACAGAGACCTCTCCAAGGATGGCAGGGGACAGCTTCTACTCACGTGA
 GTGGTTCTTT

ACGCGTACGCGGCCGCTCGAGCAGAAACTCATCTCAGAAGAGGATCTGGCAGCAAATGATATCCTGGATT
 ACAAGGATGACGACGATAAGGTTTAA

Protein Sequence:

>RC225796 representing NM_001130088
 Red=Cloning site Green=Tags(s)

MSAVSQQAAPSPLEKSPSTAILCNTCGNVCKGEVLRVQDKYFHIKCFVCKACGCDLAEGGFFVVRQGEYI
 CTLDYQRLYGTRCFSCDQFIEGEVVSALGKTYHPDCFVCAVCRLPFPPGDRVTFNGKECMCQKCSLPVSV
 GSSAHLSQLRSCGGCGTEIKNGQALVALDKHWHLGCFKCKSCGKLLNAEYISKDGLPYCEADYHAKFGI
 RCDSCKEYITGRVLEAGEKHYHPSALCVRGQMFAGEEEMYLQSSIWHPACRQAARTEDRNKETRTSS
 ESIIISVPASSTSGSPSRVIYAKLGGIILDYRDLAALPKSKAIYDIDRPDMISYSPYISHSAGDRQSYGES
 PQLLSPTPTEGDQDRSYKQCRSSPSSSTGSVSLGRYPTSRSPQHYSRPAARRSDGEDGSLDQDNKQK
 SSWMLMLKGDADTRTNSPDLDTQSLSHSSGTDTRDPLQRMAGDSFHSREWFF

TRTRPLEQKLISEEDLAANDILDYKDDDDKV

Chromatograms:

https://cdn.origene.com/chromatograms/ja1414_a12.zip

Restriction Sites:

SgfI-MluI

Cloning Scheme:


ACCN: NM_001130088

ORF Size: 1410 bp

OTI Disclaimer: The molecular sequence of this clone aligns with the gene accession number as a point of reference only. However, individual transcript sequences of the same gene can differ through naturally occurring variations (e.g. polymorphisms), each with its own valid existence. This clone is substantially in agreement with the reference, but a complete review of all prevailing variants is recommended prior to use. [More info](#)

OTI Annotation: This clone was engineered to express the complete ORF with an expression tag. Expression varies depending on the nature of the gene.

Components: The ORF clone is ion-exchange column purified and shipped in a 2D barcoded Matrix tube containing 10ug of transfection-ready, dried plasmid DNA (reconstitute with 100 ul of water).

Reconstitution Method:

1. Centrifuge at 5,000xg for 5min.
2. Carefully open the tube and add 100ul of sterile water to dissolve the DNA.
3. Close the tube and incubate for 10 minutes at room temperature.
4. Briefly vortex the tube and then do a quick spin (less than 5000xg) to concentrate the liquid at the bottom.
5. Store the suspended plasmid at -20°C. The DNA is stable for at least one year from date of shipping when stored at -20°C.

RefSeq: [NM_001130088.2](#)

RefSeq ORF: 1413 bp

Locus ID: 84448

UniProt ID: [Q6H8Q1](#)

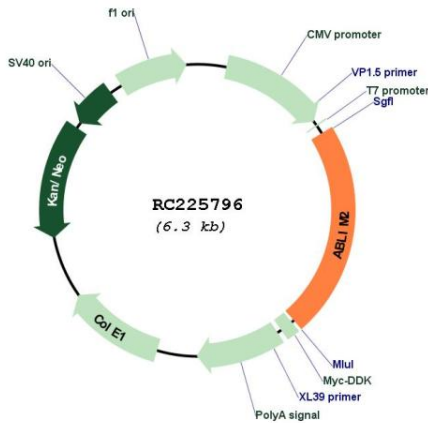
Cytogenetics: 4p16.1

Protein Pathways: Axon guidance

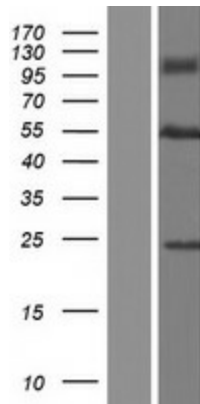
MW: 51.5 kDa

Gene Summary: May act as scaffold protein. May stimulate ABRA activity and ABRA-dependent SRF transcriptional activity.[UniProtKB/Swiss-Prot Function]

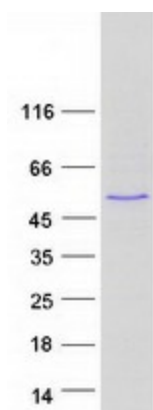
Product images:



Circular map for RC225796



Western blot validation of overexpression lysate (Cat# [LY427156]) using anti-DDK antibody (Cat# [TA50011-100]). Left: Cell lysates from untransfected HEK293T cells; Right: Cell lysates from HEK293T cells transfected with RC225796 using transfection reagent MegaTran 2.0 (Cat# [TT210002]).



Coomassie blue staining of purified ABLIM2 protein (Cat# [TP325796]). The protein was produced from HEK293T cells transfected with ABLIM2 cDNA clone (Cat# RC225796) using MegaTran 2.0 (Cat# [TT210002]).