

## Product datasheet for **RC225787**

### CEP55 (NM\_001127182) Human Tagged ORF Clone

#### Product data:

Product Type:	Expression Plasmids
Product Name:	CEP55 (NM_001127182) Human Tagged ORF Clone
Tag:	Myc-DDK
Symbol:	CEP55
Synonyms:	C10orf3; CT111; MARCH; URCC6
Mammalian Cell Selection:	Neomycin
Vector:	pCMV6-Entry (PS100001)
E. coli Selection:	Kanamycin (25 ug/mL)



[View online »](#)

**ORF Nucleotide Sequence:**

>RC225787 ORF sequence  
 Red=Cloning site Blue=ORF Green=Tags(s)

TTTTGTAATACGACTCACTATAGGGCGGCCGGAATTCGTCGACTGGATCCGGTACCGAGGAGATCTGCC  
 GCC**CGCATCGCC**

ATGTCCTCCAGAAGTACCAAAGATTTAATTAAGTAAGTGGGATCGAAGCCTAGTAACCCAATCCG  
 AAACACTACATTAGAAAAATTAAGGGAGAAATTGCACACTTAAAGACATCAGTGGATGAAATCACAAGTGG  
 GAAAGGAAAGCTGACTGATAAAGAGAGACACAGACTTTTGGAGAAAATTCGAGTCCCTGAGGCTGAGAAG  
 GAGAAGAATGCTTATCAACTCACAGAGAAGGACAAAGAAATACAGCGACTGAGAGACCAACTGAAGGCCA  
 GATATAGTACTACCGCATTGCTTGAACAGCTGGAAGAGACAACGAGAGAAGGAGAAAGGAGGAGCAGGT  
 GTTGAAAGCCTTATCTGAAGAGAAAGACGTATTGAAACAACAGTTGTCTGCTGCAACCTCACGAATTGCT  
 GAACCTGAAAGCAAAACCAATACACTCCGTTTATCACAGACTGTGGCTCCAAACTGCTTCAACTCATCAA  
 TAAATAATATTCATGAAATGAAATACAGCTGAAAGATGCTCTGGAGAAAAATCAGCAGTGGCTCGTGTA  
 TGATCAGCAGCGGAAGTCTATGTAAGGACTTTTAGCAAAGATCTTTGAGTTGAAAAAGAAAACGGAA  
 ACAGCTGCTCATTCACTCCACAGCAGACAAAAAGCCTGAATCAGAAGTTATCTTCAAGAAGAGAAGC  
 AGAAATGTTACAACGATCTCTTGCAAGTGCAAAAAAGATCTTGAGTTGAACGACAAACATAACTCA  
 GCTGAGTTTTGAACTGAGTGAATTTGAAAGAAAATATGAAGAAACCCAAAAAGAGTTTCACAATTTAAAT  
 CAGCTGTTGTATTCACAAAGAAGGGCAGATGTGCAACATCTGGAAGATGATAGGCATAAACAGAGAAGA  
 TACAAAAACTCAGGGAAGAGAATGATATTGCTAGGGGAAAACCTGAAGAAGAGAAGAAGAGATCCGAGA  
 GCTCTTATCTCAGGTCCAGTTTCTTTACACATCTCTGCTAAAGCAGCAAGAAGAACAACAGGGTAGCT  
 CTGTTGGAACAACAGATGCAGGCATGACTTTAGACTTTGAAAAAGAAAACTCGACCGTCAACATGTGC  
 AGCATCAATTGCTTGAATTTCTTAAGGAGCTCCGAAAAGCAAGAAATCAAATAACACAGTTGGAATCCTT  
 GAAACAGCTTCATGAGTTTGCCATCACAGAGCCATTAGTCACTTTCCAAGGAGAGACTGAAAACAGAGAA  
 AAAGTTGCCGCTCACAAAAAGTCCCCTGCTGCACTCAATGAAAGCCTGGTGGATGTCCCAAGTGCA  
 ATATACAGTATCCAGCCACTGAGCATCGCGATCTGCTGTCCATGTGGAATACTGTTCAAAG

**ACGCGT**ACGCGGCCGCTCGAGCAGAAACTCATCTCAGAAGAGGATCTGGCAGCAAATGATATCCTGGATT  
 ACAAGGATGACGACGATAAGGTTTAA

**Protein Sequence:**

>RC225787 protein sequence  
 Red=Cloning site Green=Tags(s)

MSSRSTKDLIKSKWGSKPSNSKSETTLEKLKGEIAHLKTSVDEITSGKGKLDKERHRLLEKIRVLEAEK  
 EKNAYQLTEKDKEIQRLRDQLKARYSTTALLEQLEETTREGERRQVLKALSEEKDVLLKQQLSAATSRIA  
 ELESKTNTLRLSQTVPNCFNSSINNIHEMEIQLKDALEKNQQLVYDQQREVYVKGLLAKIFELEKKT  
 TAAHSLPQQTKKPESEGYLQEEKQKCYNDLLASAKKDLEVERQITQLSFELSEFRRYEETQKEVHNLN  
 QLLYSQRRADVQHLEDDRHKTEKIQLREENDIARGKLEEEKRSEELLQVQFLYTSLLKQEEQTRVA  
 LLEQQMQLACTLDFENEKLDQRHVQHQLLVILKELRKARNQITQLESKQLHEFAITEPLVTFQGETENRE  
 KVAASPKSPTAALNESLVECPKNIQYPATEHRDLLVHVEYCSK

**TR**TRPLEQKLISEEDLAANDILDYKDDDDKV

**Chromatograms:**

[https://cdn.origene.com/chromatograms/mk6409\\_a12.zip](https://cdn.origene.com/chromatograms/mk6409_a12.zip)

**Restriction Sites:**

Sgfl-MluI

**Cloning Scheme:**


**ACCN:** NM\_001127182

**ORF Size:** 1392 bp

**OTI Disclaimer:** The molecular sequence of this clone aligns with the gene accession number as a point of reference only. However, individual transcript sequences of the same gene can differ through naturally occurring variations (e.g. polymorphisms), each with its own valid existence. This clone is substantially in agreement with the reference, but a complete review of all prevailing variants is recommended prior to use. [More info](#)

**OTI Annotation:** This clone was engineered to express the complete ORF with an expression tag. Expression varies depending on the nature of the gene.

**Components:** The ORF clone is ion-exchange column purified and shipped in a 2D barcoded Matrix tube containing 10ug of transfection-ready, dried plasmid DNA (reconstitute with 100 ul of water).

**Reconstitution Method:**

1. Centrifuge at 5,000xg for 5min.
2. Carefully open the tube and add 100ul of sterile water to dissolve the DNA.
3. Close the tube and incubate for 10 minutes at room temperature.
4. Briefly vortex the tube and then do a quick spin (less than 5000xg) to concentrate the liquid at the bottom.
5. Store the suspended plasmid at -20°C. The DNA is stable for at least one year from date of shipping when stored at -20°C.

**RefSeq:** [NM\\_001127182.1](#), [NP\\_001120654.1](#)

**RefSeq Size:** 2534 bp

**RefSeq ORF:** 1395 bp

**Locus ID:** 55165

**UniProt ID:** [Q53EZ4](#)

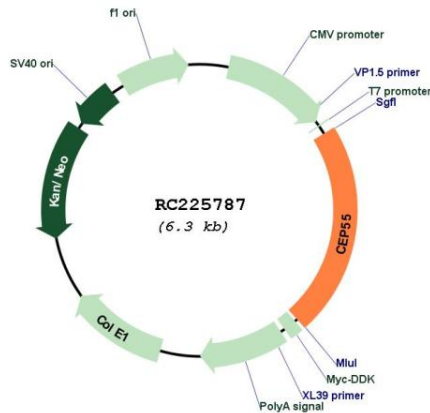
**Cytogenetics:** 10q23.33

**Protein Families:** Druggable Genome

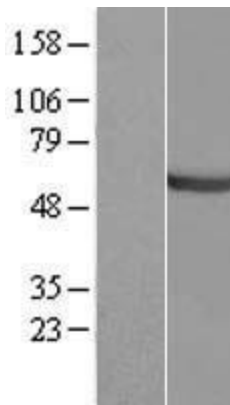
**MW:** 54.1 kDa

**Gene Summary:** Plays a role in mitotic exit and cytokinesis (PubMed:16198290, PubMed:17853893). Recruits PDCD6IP and TSG101 to midbody during cytokinesis. Required for successful completion of cytokinesis (PubMed:17853893). Not required for microtubule nucleation (PubMed:16198290). Plays a role in the development of the brain and kidney (PubMed:28264986).[UniProtKB/Swiss-Prot Function]

**Product images:**



Circular map for RC225787



Western blot validation of overexpression lysate (Cat# [LY426692]) using anti-DDK antibody (Cat# [TA50011-100]). Left: Cell lysates from untransfected HEK293T cells; Right: Cell lysates from HEK293T cells transfected with RC225787 using transfection reagent MegaTran 2.0 (Cat# [TT210002]).