

Product datasheet for **RC225773**

BIGM103 (SLC39A8) (NM_001135146) Human Tagged ORF Clone

Product data:

Product Type:	Expression Plasmids
Product Name:	BIGM103 (SLC39A8) (NM_001135146) Human Tagged ORF Clone
Tag:	Myc-DDK
Symbol:	BIGM103
Synonyms:	BIGM103; CDG2N; LZT-Hs6; PP3105; ZIP8
Mammalian Cell Selection:	Neomycin
Vector:	pCMV6-Entry (PS100001)
E. coli Selection:	Kanamycin (25 ug/mL)



[View online »](#)

ORF Nucleotide Sequence:

>RC225773 representing NM_001135146
 Red=Cloning site Blue=ORF Green=Tags(s)

TTTTGTAATACGACTCACTATAGGGCGGCCGGGAATTCGTCGACTGGATCCGGTACCGAGGAGATCTGCC
 GCC**CGATCGCC**

ATGGCCCCGGGTCGCGCGGTGGCCGGGCTCCTGTTGCTGGCGCCCGCGCCTCGGAGGAGTGGCGGAGG
 GGCCAGGGCTAGCCTTCAGCGAGGATGTGCTGAGCGTGTTCGGCGCGAATCTGAGCCTGTGGCGCGCA
 GCTCCAGCACTTCTGGAGCAGATGGGAGCCGCTCCCGCGTGGGCGTCCCGGAGCCTGGCCAGCTGCAC
 TTCAACCAGTGTAACTGCTGAAGAGATCTTTCCCTTCATGGCTTTCAAATGCTACCCAAATAACCA
 GCTCCAAATTCTGTCTGTCCAGCAGTCTTACAGCAATTGAACTTTCACCCATGTGAGGATCGGCC
 CAAGCACAAAACAAGACCAAGTCATTTCAGAAAGTTGGGGATATGGATTCTGTGAGTACGATTATTAAT
 CTGGCATCTCCTCGGATTGATTTGACTCCACTGATAAAGAAATCTTATTTCCAAAGATTTGACCT
 TTTTGTGGGGCTGGCTATTGGGACTCTTTTTCAAATGCAATTTCCAACCTATTCCAGAGGCATTTGG
 ATTTGATCCCAAAGTCGACAGTTATGTTGAGAAGGCAGTTGCTGTGTTTGGTGGATTTACCTACTTTTC
 TTTTTGAAAGAATGCTAAAGATGTTATTAAGACATATGGTCAGAATGGTCATACCCACTTTGAAATG
 ATAACCTTTGGTCCTCAAGAAAAAATCATCAACCTAAAGCATTACCTGCCATCAATGGTGTGACATGCTA
 TGCAAATCCTGCTGTACAGAAGCTAATGGACATATCCATTTTGATAATGTGAGTGTGGTATCTCTACAG
 GATGGAAAAAAGAGCCAAGTTCATGTACCTGTTTGAAGGGGCCAAACTGTCAGAAATAGGGACGATTG
 CCTGGATGATAACGCTCTGCGATGCCCTCCACAATTTTCATCGATGGCCTGGCGATTGGGGCTTCTGCAC
 CTTGCTCTCCTCAGGGACTCAGTACTCCATAGCAATCCTATGTGAGGAGTTTCCCCACGAGTTAGGA
 GACTTTGTGATCCTACTCAATGCAGGGATGAGCACTCGACAAGCCTTGTATTCAACTTCTTTCTGCAT
 GTTCTGCTATGTTGGGCTAGCTTTTGGCATTGTTGGTGGCAACAATTTGCTCCAAATATATATTTGTC
 ACTTGTGGAGGCATGTTCTCTATATTTCTGTCGAGATATGTTTCCAGAGATGAATGATATGCTGAGA
 GAAAAGGTAAGTGAAGAAAAACCGATTTACCTTCTCATGATTGAGAATGCTGGAATGTTAACTGGAT
 TCACAGCCATTCTACTATTACCTTGTATGACAGGAGAAATCGAATTGGAG

ACGCGTACGCGCGCGCTCGAGCAGAAACTCATCTCAGAAGAGGATCTGGCAGCAAATGATATCCTGGATT
 ACAAGGATGACGACGATAAGGTTTAA

Protein Sequence:

>RC225773 representing NM_001135146
 Red=Cloning site Green=Tags(s)

MAPGRAVAGLLLLAAAGLGGVAEGPGLAFSEDVLSVFGANLSLSAAQLQHLLLEQMGAAASRVGVPEPQLH
 FNQCLTAEEIFSLHGFSNATQITSSKFSVICPAVLQQLNFHPCEDRPKHKTRPSHSEVWGYGFLSVTIIN
 LASLLGLILTPLIKKSYFPKILTFVGLAIGTLFSNAIFQLIPEAFGFDPKVDSYVEKAVAVFGGFYLLF
 FFERMLKMLLKYQNGHTHFGNDNFGPQEKTHQPKALPAINGVTCYANPAVTEANGHIHFDNVSVSLQ
 DGKKEPSSCTCLKGPKLSEIGTIAWMITLCDALHNFIDGLAIGASCTLSLLQGLSTSIAILCEEFPHELG
 DVFILLNAGMSTRQALLFNFLSACSCYVGLAFGILVGNFAPNIIIFALAGMFLYISLADMFPPEMNDMLR
 EKVTGRKTDFTFFMIQNAGMLTGFTAILLITLYAGEIELE

TRTRPLEQKLISEEDLAANDILDYKDDDDKV

Chromatograms:

https://cdn.origene.com/chromatograms/mg2413_c06.zip

Restriction Sites:

Sgfl-MluI

Cloning Scheme:


ACCN: NM_001135146

ORF Size: 1380 bp

OTI Disclaimer: The molecular sequence of this clone aligns with the gene accession number as a point of reference only. However, individual transcript sequences of the same gene can differ through naturally occurring variations (e.g. polymorphisms), each with its own valid existence. This clone is substantially in agreement with the reference, but a complete review of all prevailing variants is recommended prior to use. [More info](#)

OTI Annotation: This clone was engineered to express the complete ORF with an expression tag. Expression varies depending on the nature of the gene.

Components: The ORF clone is ion-exchange column purified and shipped in a 2D barcoded Matrix tube containing 10ug of transfection-ready, dried plasmid DNA (reconstitute with 100 ul of water).

- Reconstitution Method:**
1. Centrifuge at 5,000xg for 5min.
 2. Carefully open the tube and add 100ul of sterile water to dissolve the DNA.
 3. Close the tube and incubate for 10 minutes at room temperature.
 4. Briefly vortex the tube and then do a quick spin (less than 5000xg) to concentrate the liquid at the bottom.
 5. Store the suspended plasmid at -20°C. The DNA is stable for at least one year from date of shipping when stored at -20°C.

RefSeq: [NM_001135146.2](#)

RefSeq ORF: 1383 bp

Locus ID: 64116

UniProt ID: [Q9C0K1](#)

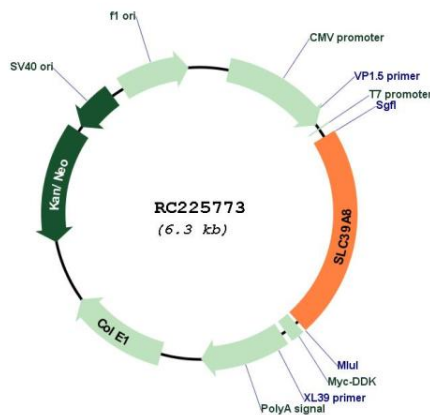
Cytogenetics: 4q24

Protein Families: Transmembrane

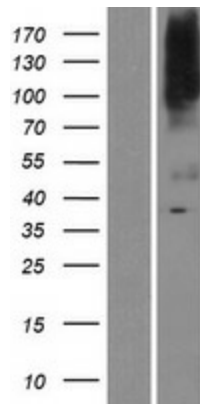
MW: 49.5 kDa

Gene Summary: This gene encodes a member of the SLC39 family of solute-carrier genes, which show structural characteristics of zinc transporters. The encoded protein is glycosylated and found in the plasma membrane and mitochondria, and functions in the cellular import of zinc at the onset of inflammation. It is also thought to be the primary transporter of the toxic cation cadmium, which is found in cigarette smoke. Multiple transcript variants encoding different isoforms have been found for this gene. Additional alternatively spliced transcript variants of this gene have been described, but their full-length nature is not known. [provided by RefSeq, Oct 2008]

Product images:



Circular map for RC225773



Western blot validation of overexpression lysate (Cat# [LY427559]) using anti-DDK antibody (Cat# [TA50011-100]). Left: Cell lysates from untransfected HEK293T cells; Right: Cell lysates from HEK293T cells transfected with RC225773 using transfection reagent MegaTran 2.0 (Cat# [TT210002]).