

## Product datasheet for **RC225771**

### **NRXN3 (NM\_001105250) Human Tagged ORF Clone**

#### **Product data:**

Product Type:	Expression Plasmids
Product Name:	NRXN3 (NM_001105250) Human Tagged ORF Clone
Tag:	Myc-DDK
Symbol:	NRXN3
Synonyms:	C14orf60
Mammalian Cell Selection:	Neomycin
Vector:	pCMV6-Entry (PS100001)
E. coli Selection:	Kanamycin (25 ug/mL)



[View online »](#)

**ORF Nucleotide Sequence:**

>RC225771 representing NM\_001105250  
 Red=Cloning site Blue=ORF Green=Tags(s)

TTTTGTAATACGACTCACTATAGGGCGGCCGGAATTCGTCGACTGGATCCGGTACCGAGGAGATCTGCC  
 GCC**GCGATCGCC**

ATGCACCTGAGAATCCACGCGAGACGGAGCCCTCCTCGCCGGCCGGCCTGGACGCTTGGGATCTGGTTCC  
 TGTCTGGGGATGTATCGTCAGCTCTGTATGGAGTTCTTCTAATGTAGCTTCTCCTCCTCCACCTTTC  
 CTCGCCGGGGTCTCACTCTCAGCACGAGACCATTTCATGGCAGCAAGCATCACTCAGTGCCTATTTCT  
 ATCTATCGTTCCCTGTTTCCCTTCGAGGAGGACAGCTGGCGCTACGTACATCTTTGGGAAAAGTGGTG  
 GGCTTATCCTCTACACCTGGCCAGCCAATGACAGGCCAGCACGGCTGACCGCCTTGCCGTGGGCTT  
 CAGCACCCTGTGAAGGATGGCATCTTGGTCCGCATCGACAGTGTCCAGGACTTGGTGACTTCTCCAG  
 CTTACATAGAACAGGGGAAAATGGAGTTGTCTCAACATTGGCACAGTTGACATCTCCATCAAAGAGG  
 AGAGAACCCTGTAATGACGGCAAATACCATGTGGTACGCTTACCAGGAACGGCGGCAACGCCACCCT  
 GCAGGTGGACAACCTGGCCAGTGAATGAACATTATCCTACAGGCAACACTGATAATGAACGCTTCCAATG  
 GTAAAACAGAAAATCCCTTCAAATATAATCGGCCTGTAGAGGAGTGGCTGCAGGAAAAAGCCGGCAGT  
 TAACCATCTTCAACACTCAGCGCAAATAGCCATTGGTGGAAAGGACAAAAGGACGCTTCTCCAAGGCCA  
 ACTCTCTGGGCTCTATTATGATGGTTTGAAGTACTGAACATGGCGGCTGAGAACAACCCCAATATTTAA  
 ATCAATGGAAGTGTTCGGCTGGTTGGAGAAGTCCCATCAATTTTGGGAACAACACAGACGACCTCCATGC  
 CACCAGAAATGTCTACTACTGTCTGCAAGAACACTACTACAATGGCGACTACCACAACCCGTAAGAAATCG  
 CTCTACAGCCAGCATTAGCCAACATCAGATGATCTTGTTCATCTGTGAATGTTCAAGTATGATGAA  
 GACTTTGTTGAATGTGAGCCGAGTACAGCAAACCCACGGAGCCGGGAATCAGACGGGTTCCGGGGCCCT  
 CAGAGGTGATCCGGGAGTCCGAGCAGCACAAACAGGGATGGTCTCGGCATTGTGGCTGCTCCGCCCTCG  
 CATCTTGATCCTCTGTACGCCATGTACAAGTACAGGAACAGGACAGGGGTCCTATCAAGTGGACGAG  
 ACGCGGAACTACATCAGCAACTCCGCCAGAGCAACGGCACGCTCATGAAGGAGAAGCAGCAGAGCTCGA  
 AGAGCGGCCACAAGAACAGAAAACAAGGACAGGGAGTATTACGTG

**ACGCGT**ACGCGGCCGCTCGAGCAGAACTCATCTCAGAAGAGGATCTGGCAGCAAATGATATCCTGGATT  
 ACAAGGATGACGACGATAAGGTTTAA

**Protein Sequence:**

>RC225771 representing NM\_001105250  
 Red=Cloning site Green=Tags(s)

MHLRIHARRSPRRPAWTLGIWFLFWGCIVSSVWSSSNVASSSTSSSPGSHSQHEHHFHGSKHHSVPIS  
 IYRSPVSLRGGHAGATYIFGKSGGLILYTWPANDRPSTRSDRLAVGFSTTVKDGILVRIDSAPGLGDFLQ  
 LHIEQGIQVFNIGTVDISIKEERTPVNDGKYHVVRFRNNGNATLQVDNWPVNEHYPTGNTDNERFQM  
 VKQKIPFKYNRPVEEWLQEKGRQLTIFNTQAQIAIGGKDKGRLFQGLSGLYYDGLKVLNMAAENPNIK  
 INGSVRLVGEVPSILGTTQTTSMPPEMSTVMETTTTMTTTRKNRSTASIQPTSDDLVSSAECSSDDE  
 DFVECEPSTANPTEPGIRRVPGASEVIRESSSTTMVVGIVAAAALCILILLYAMYKYRNRDEGSYQVDE  
 TRNYISNSAQSNGLMKEKQSSKSGHKKQKNKDREYYV

**TR**TRPLEQKLISEEDLAANDILDYKDDDDKV

**Chromatograms:**

[https://cdn.origene.com/chromatograms/mk8061\\_d10.zip](https://cdn.origene.com/chromatograms/mk8061_d10.zip)

**Restriction Sites:**

Sgfl-Mlul

**Cloning Scheme:**


**ACCN:** NM\_001105250

**ORF Size:** 1377 bp

**OTI Disclaimer:** The molecular sequence of this clone aligns with the gene accession number as a point of reference only. However, individual transcript sequences of the same gene can differ through naturally occurring variations (e.g. polymorphisms), each with its own valid existence. This clone is substantially in agreement with the reference, but a complete review of all prevailing variants is recommended prior to use. [More info](#)

**OTI Annotation:** This clone was engineered to express the complete ORF with an expression tag. Expression varies depending on the nature of the gene.

**Components:** The ORF clone is ion-exchange column purified and shipped in a 2D barcoded Matrix tube containing 10ug of transfection-ready, dried plasmid DNA (reconstitute with 100 ul of water).

**Reconstitution Method:**

1. Centrifuge at 5,000xg for 5min.
2. Carefully open the tube and add 100ul of sterile water to dissolve the DNA.
3. Close the tube and incubate for 10 minutes at room temperature.
4. Briefly vortex the tube and then do a quick spin (less than 5000xg) to concentrate the liquid at the bottom.
5. Store the suspended plasmid at -20°C. The DNA is stable for at least one year from date of shipping when stored at -20°C.

**RefSeq:** [NM\\_001105250.3](#)

**RefSeq ORF:** 1380 bp

**Locus ID:** 9369

**UniProt ID:** [Q9HDB5](#)

**Cytogenetics:** 14q24.3-q31.1

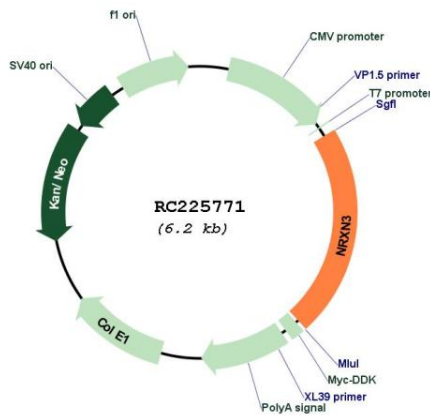
**Protein Families:** Druggable Genome, Transmembrane

**Protein Pathways:** Cell adhesion molecules (CAMs)

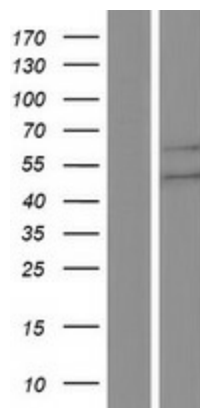
**MW:** 50.7 kDa

**Gene Summary:** This gene encodes a member of a family of proteins that function in the nervous system as receptors and cell adhesion molecules. Extensive alternative splicing and the use of alternative promoters results in multiple transcript variants and protein isoforms for this gene, but the full-length nature of many of these variants has not been determined. Transcripts that initiate from an upstream promoter encode alpha isoforms, which contain epidermal growth factor-like (EGF-like) sequences and laminin G domains. Transcripts initiating from the downstream promoter encode beta isoforms, which lack EGF-like sequences. Genetic variation at this locus has been associated with a range of behavioral phenotypes, including alcohol dependence and autism spectrum disorder. [provided by RefSeq, Dec 2012]

**Product images:**



Circular map for RC225771



Western blot validation of overexpression lysate (Cat# [LY426237]) using anti-DDK antibody (Cat# [TA50011-100]). Left: Cell lysates from untransfected HEK293T cells; Right: Cell lysates from HEK293T cells transfected with RC225771 using transfection reagent MegaTran 2.0 (Cat# [TT210002]).