

## Product datasheet for **RC225768**

### ERLEC1 (NM\_001127397) Human Tagged ORF Clone

#### Product data:

Product Type:	Expression Plasmids
Product Name:	ERLEC1 (NM_001127397) Human Tagged ORF Clone
Tag:	Myc-DDK
Symbol:	ERLEC1
Synonyms:	C2orf30; CIM; CL24936; CL25084; HEL117; XTP3-B; XTP3TPB
Mammalian Cell Selection:	Neomycin
Vector:	pCMV6-Entry (PS100001)
E. coli Selection:	Kanamycin (25 ug/mL)



[View online »](#)

**ORF Nucleotide Sequence:**

>RC225768 representing NM\_001127397  
 Red=Cloning site Blue=ORF Green=Tags(s)

TTTTGTAATACGACTCACTATAGGGCGGCCGGGAATTCGTCGACTGGATCCGGTACCGAGGAGATCTGCC  
 GCC**CGCATCGCC**

ATGGAGGAAGGAGGCGGCGCGTACGGAGTCTGGTCCCAGGCGGCGCGGTGTTACTGGTCTCTGCGGCC  
 TCCTGGAGGCGTCCGCGCGCGGCCGAGCCCTTCTCAACTCAGCGATGACATCCCTTCCGAGTCAACTG  
 GCCCGCACCGAGTTCTCTGCCCCAACCTGGAGTTTTATATAAAGAAGATAATTATGTCATCATGACA  
 ACTGCACATAAAGAAAAATATAATGCATACTTCCCCTTGTGACAAGTGGGGATGAGGAAGAAGAAAAGG  
 ATTATAAAGGCCCTAATCCAAGAGAGCTTTGGAGCCACTATTTAAACAAAGCAGTTGTTCTACAGAAT  
 TGAGTCTTATTGGACTTACGAAGTATGTCATGGAAAACACATTCGGCAGTACCATGAAGAGAAAGAACT  
 GGTGAGAAAATAAATATTCACGAGTACTACCTGGGAATATGTTGGCCAAGAACCCTTCTATTTGAAAAAG  
 AACGAGAAGCAGAAGAAAAGAAAAATCAAATGAGATCCCACTAAAAATATCGAAGGTCAGATGACACC  
 ATACTATCCTGTGGGAATGGGAAATGGTACACCTTGTAGTTTGAACAGAACCGGCCAGATCAAGTACT  
 GTGATGTACATATGTCATCCTGAATCTAAGCATGAAATCTTTCAGTAGCTGAAGTTACAACCTGTGAAT  
 ATGAAGTTGTCATTTTGACACCCTCTTGTGCAGTCATCCTAAATATAGGTTTCAGAGCATCTCCTGTGAA  
 TGACATATTTTGTCAATCACTGCCAGGATCTCCATTTAAGCCCCTCACCTGAGGCAGCTGGAGCAGCAG  
 GAAGAAATACTAAGGGTGCCTTTTAGGAGAAAATAAGAGGAAGATTTGCAATCAACTAAAGAAGAGAGAT  
 TTCCAGCGATCCACAAGTCGATTGCTATTGGCTCTCAGCCAGTGCCTACTGTTGGGACAACCCACATATC  
 CAAATTGACAGATGACCAACTCATAAAGAGTTTCTTAGTGGTTCTTACTGCTTTCGTGGGGGTGTCGGT  
 TGGTGGAAATATGAATTCGCTATGGCAAACATGTACATCAATACCATGAGGACAAGGATAGTGGGAAA  
 CCTCTGTGGTTGTCGGGACATGGAACCAAGAAGACATATTGAATGGGCTAAGAAGAATACTGCTAGAGC  
 TTATCATCTTCAAGACGATGGTACCCAGACAGTCAGGTGCAAAGAATCAGATTCACCTCATGCTGTTACT  
 GTATATATGCTAGAGCCTCACTCCTGTCAATATATTCTTGGGGTTGAATCTCCAGTGATCTGAAAAATCT  
 TAGATACAGCAGATGAAAATGGACTTCTTCTCTCCCAAC

**ACGCGT**ACGCGGCCGCTCGAGCAGAACTCATCTCAGAAGAGGATCTGGCAGCAAATGATATCCTGGATT  
 ACAAGGATGACGACGATAAGGTTTAA

**Protein Sequence:**

>RC225768 representing NM\_001127397  
 Red=Cloning site Green=Tags(s)

MEEGGGVRSLVPGGPVLLVLCGLLEASGGGRALPQLSDDIPFRVNWPGTEFSLPTTGVLKEDNYVIMT  
 TAHKEKYKILPLVTSGDEEEKDYKGNPRELLEPLFKQSSCSYRIESYWTYEVCHGKHIRQYHEEKET  
 GQKINIHEYLLGNMLAKNLLFEKEREAEKEKSNEIPTKNI EQMTPYYPVGMNGTPCSCLKQNRPRSST  
 VMYICHPEKHEILSVAEVTTCEYEVVILTPLLC SHPKYRFRASPVNDIFCQSLPGSPFKPLTLRQLEQQ  
 EEILRVFRRNKEEDLQSTKEERFPAIHKSAIIGSQPVLTGTTTHISKLTDDQLIKEFLSGSYCFRGGVG  
 WWKYEFYKGVHGHYHEDKDSGKTSVVVGTWNQEEHIEWAKKNTARAYHLQDDGTQTVRCKESDSPHAVT  
 VYMLEPHSCQYILGVESPVICKILDTADENGLLSLPN

**TR**TRPLEQKLISEEDLAANDILDYKDDDDKV

**Chromatograms:**

[https://cdn.origene.com/chromatograms/mk8061\\_c08.zip](https://cdn.origene.com/chromatograms/mk8061_c08.zip)

**Restriction Sites:**

Sgfl-Mlul

**Cloning Scheme:**


**ACCN:** NM\_001127397

**ORF Size:** 1371 bp

**OTI Disclaimer:** The molecular sequence of this clone aligns with the gene accession number as a point of reference only. However, individual transcript sequences of the same gene can differ through naturally occurring variations (e.g. polymorphisms), each with its own valid existence. This clone is substantially in agreement with the reference, but a complete review of all prevailing variants is recommended prior to use. [More info](#)

**OTI Annotation:** This clone was engineered to express the complete ORF with an expression tag. Expression varies depending on the nature of the gene.

**Components:** The ORF clone is ion-exchange column purified and shipped in a 2D barcoded Matrix tube containing 10ug of transfection-ready, dried plasmid DNA (reconstitute with 100 ul of water).

**Reconstitution Method:**

1. Centrifuge at 5,000xg for 5min.
2. Carefully open the tube and add 100ul of sterile water to dissolve the DNA.
3. Close the tube and incubate for 10 minutes at room temperature.
4. Briefly vortex the tube and then do a quick spin (less than 5000xg) to concentrate the liquid at the bottom.
5. Store the suspended plasmid at -20°C. The DNA is stable for at least one year from date of shipping when stored at -20°C.

**RefSeq:** [NM\\_001127397.2](#), [NP\\_001120869.1](#)

**RefSeq ORF:** 1374 bp

**Locus ID:** 27248

**UniProt ID:** [Q96DZ1](#)

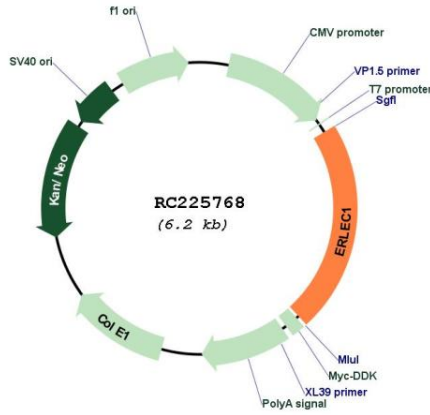
**Cytogenetics:** 2p16.2

**Protein Families:** Secreted Protein

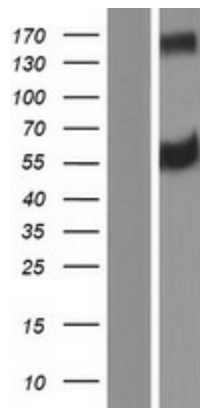
**MW:** 51.7 kDa

**Gene Summary:** This gene encodes a resident endoplasmic reticulum (ER) protein that functions in N-glycan recognition. This protein is thought to be involved in ER-associated degradation via its interaction with the membrane-associated ubiquitin ligase complex. It also functions as a regulator of multiple cellular stress-response pathways in a manner that promotes metastatic cell survival. Alternative splicing results in multiple transcript variants. A related pseudogene has been identified on chromosome 21. [provided by RefSeq, Aug 2011]

**Product images:**



Circular map for RC225768



Western blot validation of overexpression lysate (Cat# [LY426779]) using anti-DDK antibody (Cat# [TA50011-100]). Left: Cell lysates from untransfected HEK293T cells; Right: Cell lysates from HEK293T cells transfected with RC225768 using transfection reagent MegaTran 2.0 (Cat# [TT210002]).