

## Product datasheet for **RC225767**

### MANEL (MANEAL) (NM\_001113482) Human Tagged ORF Clone

#### Product data:

Product Type:	Expression Plasmids
Product Name:	MANEL (MANEAL) (NM_001113482) Human Tagged ORF Clone
Tag:	Myc-DDK
Symbol:	MANEL
Mammalian Cell Selection:	Neomycin
Vector:	pCMV6-Entry (PS100001)
E. coli Selection:	Kanamycin (25 ug/mL)



[View online »](#)

**ORF Nucleotide Sequence:**

>RC225767 representing NM\_001113482  
 Red=Cloning site Blue=ORF Green=Tags(s)

TTTTGTAATACGACTCACTATAGGGCGGCCGGGAATTCGTCGACTGGATCCGGTACCGAGGAGATCTGCC  
 GCC**GCGATCGCC**

ATGGCCCGGGCGGGCGCCGCGCTGCATCGCTCTGTTCTTCTGGTGTCTCTTCGCCTTCGGCACCCCTCA  
 TGGGTCTGCGCACGCTCAAGGCTCCGGACGGACTCCCGGCGCTGGGCCCGGGCCTGGAGCTGGCGCCCTT  
 TGAGCGACGCCAGAGGGGGCCCCGCGCCGCTGCCAGGGCCCCGCGAGCCCTGCCGCGCCGCCCCCG  
 CCGCCGCCCGCCCCGACCGCGGACCCTGGCGGCTCCCTGGGCCGGCACCCGCGAGGCCGAGCCCG  
 CCCCCGTGCAGAGCCTGCGGCTACTCGGACCTGCACGCTTCTACTACTCGTGGTACGGGAGCCCGCG  
 GCGCGAGGGCCACTACATTCACTGGGACCAGTCATGGTGCCGCACTGGGACCCCAAGATCTCGGCCAGC  
 TACCCCGCGGCCACAGCCCCAGACGACTTGGGCTCCAGCTTCTACCCGGAGCTGGGGCCCTACA  
 GCTCCCGGACCCGAAGTGTGCGGGAGCATATGACCCAGCTCAAGGAAGCCGCATCGCGCTCCTGGT  
 CCTGTCTGGTACCCACCTGGCATGGCTGATGATAACGGGGAGCCCTCAGATGACCTGGTCCCGCCATT  
 CTGGACACCGCCATCAGTACAGCATCCAGGTGGCCTTCCACATCCAACCTACAAGGGCCGGGATGACA  
 TCACTGTACATGACAACATCAAGTACATCATTGACACGTATGGTCCCATGGTGCATTTTACCGCTATAA  
 GAACAGCATGGGCAAGAGCCTCCCACTCTTTATCTACGACTCATACCTGACGTCCCCTGAGGCTGG  
 GCCACCTCCTGACACCAACGGGCCCAATTCGATCCGCAACACGCCCTACGATGGGGTCTTCATAGCGC  
 TGCTGGTGGAGGAGGCCACACCACGATATCCTGGCCGCGGATTTGACGGCATGTACACCTACTTTGC  
 CTCCAATGGTTTTCTCTTTGGTTCTTCCCATCAGAAGTGAAGTGTGAAGAATTTTGTGATGCCAAC  
 AACCTCATGTTTCAATCCCAAGTGTGGGGCCTGGCTACATAGACACCAGCATTGCGCCCTGGAACAACACA  
 ATACGCGCAACAGGGTCAATGGCAAGTACTATGAGACGGCCCTGCAGGGGCCCTGACAGTGAGGCCCGA  
 GATCGTTTTCCATTACCTCCTTCAATGAGTGGCAGGAGGCCACCCAGATTGAGAAGGCCATTCCCAAGAAG  
 ACACCCACCCGCTGATTTGGACTACCTGCCTACCAGCCAGCCTGTACCTGGAGCTGACACGCCGCT  
 GGGCGGAGCACTTCATCAAAGAGAAGGAGCAGTGGCTCATG

**ACGCGT**ACGCGGCCGCTCGAGCAGAACTCATCTCAGAAGAGGATCTGGCAGCAATGATATCCTGGATT  
 ACAAGGATGACGACGATAAGGTTTAA

**Protein Sequence:**

>RC225767 representing NM\_001113482  
 Red=Cloning site Green=Tags(s)

MARRRRRACIALFLVLLFAFGTLMGLRLKAPDGLPALGPGLLELAPFERRPEGAPAPAARAPAAPAAPP  
 PPRPPRTADPGGSPGAPAEAEPAPVQSLRVYSDLHAFYYSWYGSPPREGHYIHWDHVMVPHWDPKISAS  
 YPRGRHSPPDDLGSFYPELGPYSSRDPEVLREHMTQLKEAAIGLVLSWYPPGMADDNGEPSDDLVP  
 LDIAHQYSIQVAFHIQPYKGRDDITVHDNIKYIIDTYGSHGAFYRYKNSMGKSLPLFYIYDSYLSPEAW  
 AHLLTPNGPHSIRNTPYDGVFIALLVEEGHTHDILAAGFDGMYTYFASNGFSFGSSHQNWKAVKNFCDAN  
 NLMFIPSVGPGYIDTSIRPWNNHNRNRVNGKYETALQAALTVRPEIVSITSFNEWHEGTQIEKAIPKK  
 TPTRLYLDPHQPPLYLLELRRWAEHFIIKEKEQWLM

**TR**TRPLEQKLISEEDLAANDILDYKDDDDKV

**Chromatograms:**

[https://cdn.origene.com/chromatograms/mk8006\\_b02.zip](https://cdn.origene.com/chromatograms/mk8006_b02.zip)

**Restriction Sites:**

Sgfl-Mlul

**Cloning Scheme:**


**ACCN:** NM\_001113482

**ORF Size:** 1371 bp

**OTI Disclaimer:** The molecular sequence of this clone aligns with the gene accession number as a point of reference only. However, individual transcript sequences of the same gene can differ through naturally occurring variations (e.g. polymorphisms), each with its own valid existence. This clone is substantially in agreement with the reference, but a complete review of all prevailing variants is recommended prior to use. [More info](#)

**OTI Annotation:** This clone was engineered to express the complete ORF with an expression tag. Expression varies depending on the nature of the gene.

**Components:** The ORF clone is ion-exchange column purified and shipped in a 2D barcoded Matrix tube containing 10ug of transfection-ready, dried plasmid DNA (reconstitute with 100 ul of water).

**Reconstitution Method:**

1. Centrifuge at 5,000xg for 5min.
2. Carefully open the tube and add 100ul of sterile water to dissolve the DNA.
3. Close the tube and incubate for 10 minutes at room temperature.
4. Briefly vortex the tube and then do a quick spin (less than 5000xg) to concentrate the liquid at the bottom.
5. Store the suspended plasmid at -20°C. The DNA is stable for at least one year from date of shipping when stored at -20°C.

**RefSeq:** [NM\\_001113482.1](#), [NP\\_001106954.1](#)

**RefSeq ORF:** 1374 bp

**Locus ID:** 149175

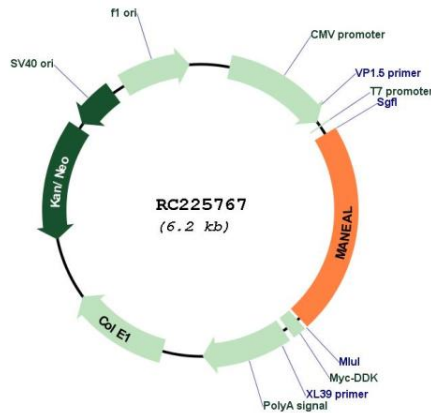
**UniProt ID:** [Q5VSG8](#)

**Cytogenetics:** 1p34.3

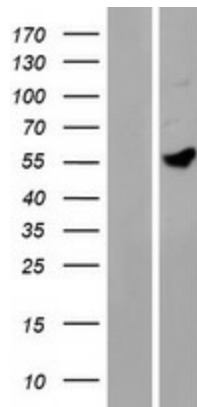
Protein Families: Transmembrane

MW: 51.1 kDa

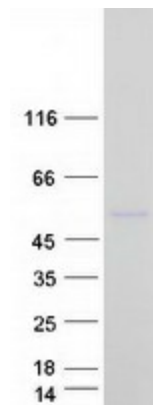
**Product images:**



Circular map for RC225767



Western blot validation of overexpression lysate (Cat# [LY426415]) using anti-DDK antibody (Cat# [TA50011-100]). Left: Cell lysates from untransfected HEK293T cells; Right: Cell lysates from HEK293T cells transfected with RC225767 using transfection reagent MegaTran 2.0 (Cat# [TT210002]).



Coomassie blue staining of purified MANEAL protein (Cat# [TP325767]). The protein was produced from HEK293T cells transfected with MANEAL cDNA clone (Cat# RC225767) using MegaTran 2.0 (Cat# [TT210002]).