

## Product datasheet for **RC225748**

### TRIM49D2 (NM\_001105522) Human Tagged ORF Clone

#### Product data:

Product Type:	Expression Plasmids
Product Name:	TRIM49D2 (NM_001105522) Human Tagged ORF Clone
Tag:	Myc-DDK
Symbol:	TRIM49D2
Synonyms:	TRIM48L1; TRIM49D1; TRIM49D2P; TRIM49L; TRIM49L1
Mammalian Cell Selection:	Neomycin
Vector:	pCMV6-Entry (PS100001)
E. coli Selection:	Kanamycin (25 ug/mL)



[View online »](#)

**ORF Nucleotide Sequence:**

>RC225748 representing NM\_001105522  
 Red=Cloning site Blue=ORF Green=Tags(s)

TTTTGTAATACGACTCACTATAGGGCGGCCGGAATTCGTCGACTGGATCCGGTACCGAGGAGATCTGCC  
 GCC**CGATCGCC**

ATGAATCTGGAATCTCGCAAGTCTCCAGAGGGAACCTACCTGCCCCATCTGCCTGAACACTTTCATAG  
 ACCCGGTACCATAGACTGTGGGCACAGCTTTTGCAGGCCCTGTTTCTACCTCAACTGGCAAGACATCCC  
 AATTTCTACTCAGTGCTTTGAATGCCTAAAGACAACACAGCAGAGAAACCTCAAAACTAACATTCGATTG  
 AAGAAGATGGCTTCCCGTCCAGAAAAGCCAGTCTCTGGCTATTCTGAGCTCTGAGGAGCAAATGTGTG  
 GCACTCACAGGGAGACAAAGAAGATATTCTGTGAAGTGGACAGGAGCCTGCTCTGTTGTGTGCTCCAG  
 CTCTCTGGAGCACCGGTATCACAGACACTGTCCCCTGAGTGGGCTGCTGAGGAACACCGGGAGAAGCTT  
 TTAAGAAAATGCAGTCTTTATGGGAAAAGTTTGTGAAAATCAGAGAAACCTGAACGTGAAAACCA  
 GAATCAGCCACTGGAAGGATTATGTGAATGAAGCTAGAAGCTATTAGAGCTGAGTATCAGAAGATGCC  
 TGCATTTTCATCATGAAGAAGAAAACATAATTTGGAGATGCTGAAAAGAAGGGGAAAGATATTTTCAT  
 CGACTTCAATTAAGTAAAGCCAAAATGGCTCACAGGAGGAGATTTAAGAGGAACGTATGCGGAGCTGA  
 TGAATGTGCCATAAACAGATGTGGAGCTACTTCAGGCTTTTGGAGACATATTACACAGGAGTGAGTC  
 CGTGCTGCTGCACATGCCCCAGCCTCTGAATCTAGAGCTCAGGGCAGGGCCATCACTGGACTGAGGGAC  
 AGGCTCAACCAATTCCGAGTGGATTAATCTGCTCATAATGAAGCCAACAGTCATATCTCCGACGTG  
 GAGATTTGAGAAGCATTGTATTGGATGTGACCGTCAAATGCGCCCCATCACTGCAACACCTACAAG  
 TTTTCTTGCATGGGGTCTCAGACTTTCACCTCTGGCAAATTAATCTGGAGGTCCATGTGGGGACTCT  
 TGAATGGGCCCTTTGGTGTCTGAATAAGTATTGAAAGGACGAATCAGAATGGCAATATACATGGAG  
 AGGAGGGACTCTTAGTCTTGGGTGTGTAAGAATGACATTCAGTGCAGCCTCTTTACCACCTCCCCT  
 TACACTGCAGTATGTCCCAAGACCTACCAACCATGTAGGATTATTCCTGGATTGTGAAGCTAGAAGTGTG  
 AGCTTCGTTGATGTTAATCAAAGCTCCCCTATACACACCATCCCTAATTGCTCCTTCTCACCTCCTCTCA  
 GCCTATCTTTGCTGTGTTACCTC

**ACGCGT**ACGCGGCCGCTCGAGCAGAACTCATCTCAGAAGAGGATCTGGCAGCAAATGATATCCTGGATT  
 ACAAGGATGACGACGATAAGGTTTAA

**Protein Sequence:**

>RC225748 representing NM\_001105522  
 Red=Cloning site Green=Tags(s)

MNSGISQVFQRELTCPICLNYPIDPVTIDCGHSFCRPFYLNWQDIPILTQCFECLKTTQQRNLKTNIRL  
 KKMASRARKASLWFLSSEEQMCGTHRETKKIFCEVDRSLLCLLCSSLEHRYHRHCPAEWAAEEHREKL  
 LKKMQSLWEKVCENQRNLNVETTRISHWKDYVNVRLAIRAQYQKMPAFHHEEEKHNLEMLKKKGKDFH  
 RLHL SKAKMAHRREILRGTYAELMKMCHKPDVELLQAFGDILHRSESVLLHMPQPLNLELRAGPITGLRD  
 RLNQFRVDITLPHNEANSHIFRRGDLRSICIGCDRQNAPHITATPTSFLAWGAQTFTSGKYYWEVHVGD  
 S WNWAFGVCNKYWKGTNQNNGIHGEEGLFSLGCVKNDIQCSLFTTSPLTLQYVPRPTNHVGLFLDCEARTV  
 SFVDVNQSSPIHTIPNCSFSPPLRPIFCVHL

**TR**TRPLEQKLISEEDLAANDILDYKDDDDKV

**Chromatograms:**

[https://cdn.origene.com/chromatograms/mk8035\\_b01.zip](https://cdn.origene.com/chromatograms/mk8035_b01.zip)

**Restriction Sites:**

Sgfl-Mlul

**Cloning Scheme:**


**ACCN:** NM\_001105522

**ORF Size:** 1356 bp

**OTI Disclaimer:** The molecular sequence of this clone aligns with the gene accession number as a point of reference only. However, individual transcript sequences of the same gene can differ through naturally occurring variations (e.g. polymorphisms), each with its own valid existence. This clone is substantially in agreement with the reference, but a complete review of all prevailing variants is recommended prior to use. [More info](#)

**OTI Annotation:** This clone was engineered to express the complete ORF with an expression tag. Expression varies depending on the nature of the gene.

**Components:** The ORF clone is ion-exchange column purified and shipped in a 2D barcoded Matrix tube containing 10ug of transfection-ready, dried plasmid DNA (reconstitute with 100 ul of water).

**Reconstitution Method:**

1. Centrifuge at 5,000xg for 5min.
2. Carefully open the tube and add 100ul of sterile water to dissolve the DNA.
3. Close the tube and incubate for 10 minutes at room temperature.
4. Briefly vortex the tube and then do a quick spin (less than 5000xg) to concentrate the liquid at the bottom.
5. Store the suspended plasmid at -20°C. The DNA is stable for at least one year from date of shipping when stored at -20°C.

**RefSeq:** [NM\\_001105522.1](#), [NP\\_001098992.1](#)

**RefSeq ORF:** 1359 bp

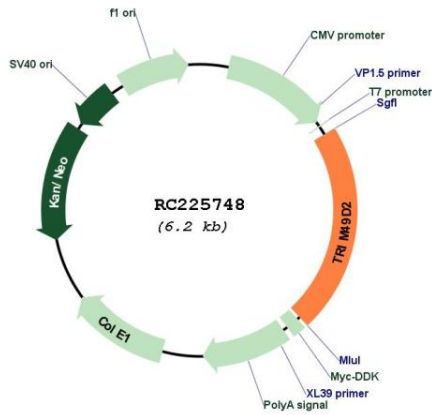
**Locus ID:** 729384

**UniProt ID:** [C9J1S8](#)

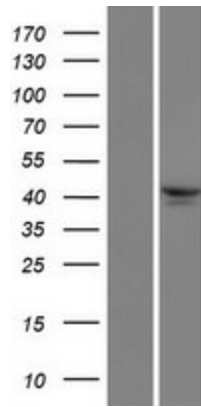
**Cytogenetics:** 11q14.3

**MW:** 52.3 kDa

Product images:



Circular map for RC225748



Western blot validation of overexpression lysate (Cat# [LY426249]) using anti-DDK antibody (Cat# [TA50011-100]). Left: Cell lysates from untransfected HEK293T cells; Right: Cell lysates from HEK293T cells transfected with RC225748 using transfection reagent MegaTran 2.0 (Cat# [TT210002]).